

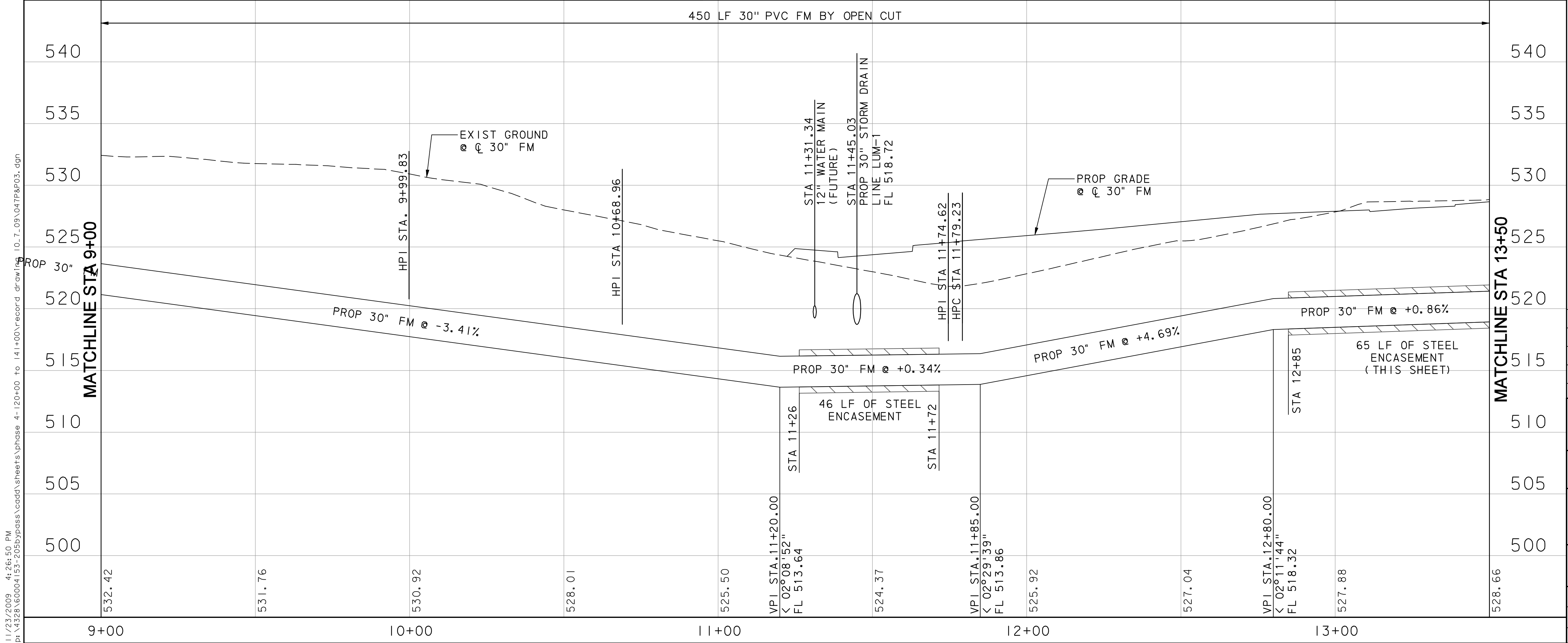
UNDERGROUND UTILITIES
 THE LOCATION OF EXISTING UTILITIES SHOWN ON THESE PLANS ARE APPROXIMATE AND BASED ON DATA FURNISHED BY THE CITY OF ROCKWALL. IT IS THE RESPONSIBILITY OF THE CONTRACTOR TO LOCATE AND VERIFY ON-SITE THE UTILITIES THAT MAY CONFLICT WITH THE CONSTRUCTION.

CURVE DATA					
NO.	Δ	D	R	T	L
205FM-1	08° 29' 58.70" (RT)	03° 17' 24.09"	1,741.50'	129.41'	258.35'

- NOTES:**
- INSTALL HORIZONTAL AND VERTICAL THRUST BLOCKING AND MECHANICAL JOINT RESTRAINT AT ALL DUCTILE IRON FITTINGS.
 - PROVIDE HORIZONTAL CURVE BY JOINT DEFLECTION ONLY. PIPE FLEXURE WILL NOT BE PERMITTED. MAXIMUM ALLOWABLE JOINT DEFLECTION SHALL BE THE LESSER OF THE FOLLOWING:
 A) 0.8 DEGREES, OR
 B) 80% OF THE ASTM/TCEQ/MANUFACTURER'S RECOMMENDED MAXIMUM JOINT DEFLECTION.
 - INSTALL POLYETHYLENE WRAP AROUND BURIED DUCTILE IRON FITTINGS.

RECORD DRAWING
 This drawing is a compilation of the original sealed engineering drawing and modifications by addenda, change orders and information furnished by the contractor. Information shown that was provided by the contractor and others not associated with the design engineer cannot be verified for accuracy or completeness. Original sealed drawing is on file at the office of AECOM USA Group, Inc., TBPE REG. NO. F-3082

ORIGINAL DRAWING SEALED & SIGNED BY
 Nicholas R. Batker, P.E.
 TX NO. 92749



NO.	REVISION	BY	DATE
205 BYPASS PHASE 4			
30" FORCE MAIN PLAN & PROFILE STA 9+00 TO 13+50			
3 OF 5			
TCB AECOM		<small>TCB INC. WWW.TCB.AECOM.COM 17300 DALLAS PARKWAY, SUITE 1010 DALLAS, TEXAS 75248</small>	
Unit	PW-DAL-FW	Scale	Horz: 1" = 40' Vert: 1" = 10'
Designed	JLT/SDB	Checked	NRB
Drawn	TCB	Approved	NRB
Date	11/23/2009	Project No.	60023784
Sheet	47	of	146

11/23/2009 4:26:50 PM
 P:\4328\60004153-205bypass\cadd\sheet\phase 4-120+00 To 141+00\record draw\p10-7-09-047R&P03.dgn