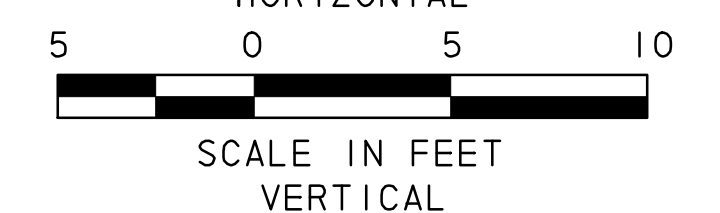
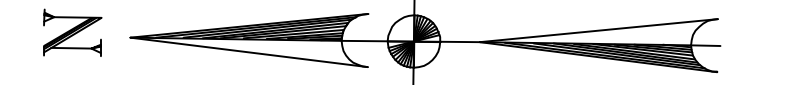
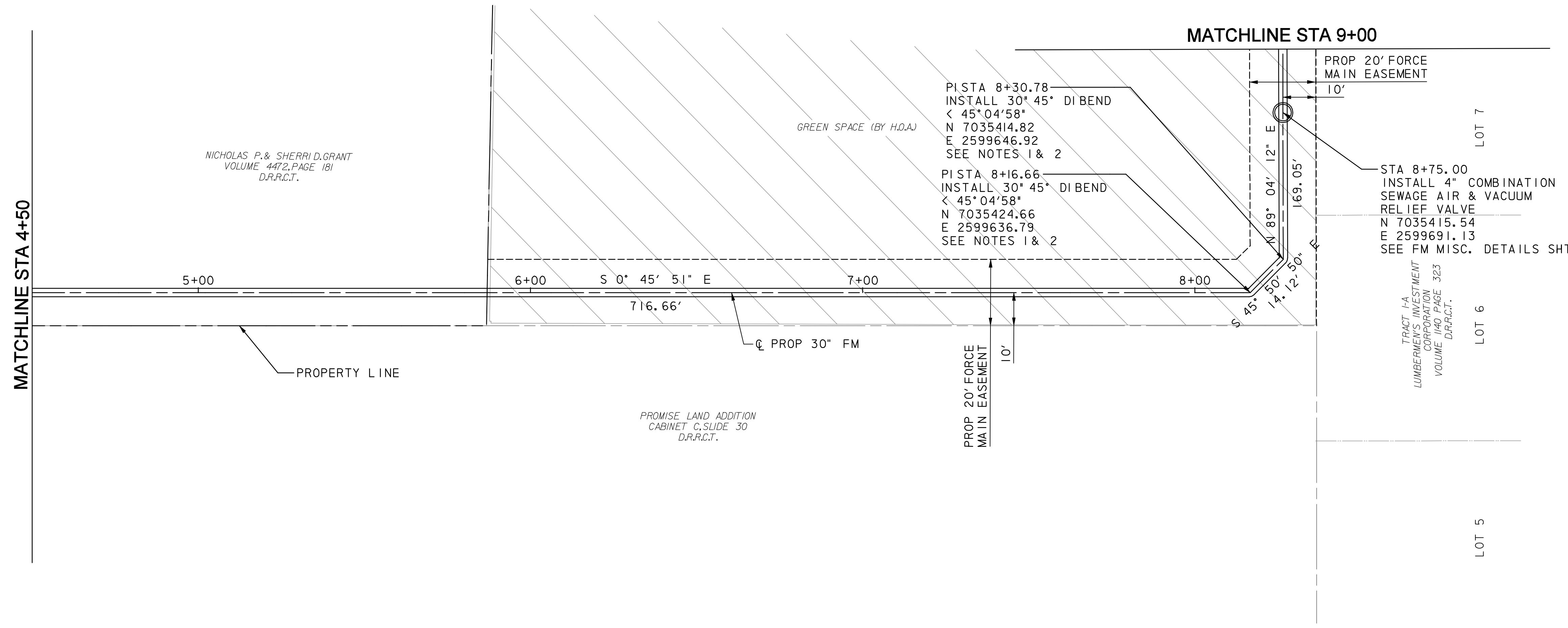


MATCHLINE STA 4+50

MATCHLINE STA 9+00



LEGEND

- RIGHT-OF-WAY
- DRAINAGE EASEMENT
- TEMP. CONSTRUCTION EASEMENT
- 205 BYPASS PAVING

UNDERGROUND UTILITIES
 THE LOCATION OF EXISTING UTILITIES SHOWN ON THESE PLANS ARE APPROXIMATE AND BASED ON DATA FURNISHED BY THE CITY OF ROCKWALL. IT IS THE RESPONSIBILITY OF THE CONTRACTOR TO LOCATE AND VERIFY ON-SITE THE UTILITIES THAT MAY CONFLICT WITH THE CONSTRUCTION.

NOTES:

1. INSTALL HORIZONTAL AND VERTICAL THRUST BLOCKING AND MECHANICAL JOINT RESTRAINT AT ALL DUCTILE IRON FITTINGS.
2. INSTALL POLYETHYLENE WRAP AROUND BURIED DUCTILE IRON FITTINGS.

RECORD DRAWING
 This drawing is a compilation of the original sealed engineering drawing and modifications by addenda, change orders and information furnished by the contractor. Information shown that was provided by the contractor and others not associated with the design engineer cannot be verified for accuracy or completeness. Original sealed drawing is on file at the office of AECOM USA Group, Inc., TBPE REG. NO. F-3082

ORIGINAL DRAWING
 SEALED & SIGNED BY
 Nicholas R. Batker, P.E.
 TX NO. 92749

NO.	REVISION	BY	DATE

City of Rockwall, Texas

205 BYPASS PHASE 4

30" FORCE MAIN PLAN & PROFILE STA 4+50 TO 9+00 2 OF 5

Unit	PW-DAL-FW	Scale	Horz: 1" = 40'	Date	11/23/2009
Designed	JLT/SDB	Checked	NRB	Project No.	60023784
Drawn	TCB	Approved	NRB	Sheet	46 of 146

11/23/2009 4:26:46 PM
 P:\4328\60004153-205bypass\cadd\sheet\phase 4-120+00 To 141+00\record drawing 10-7-09\048P02.dgn