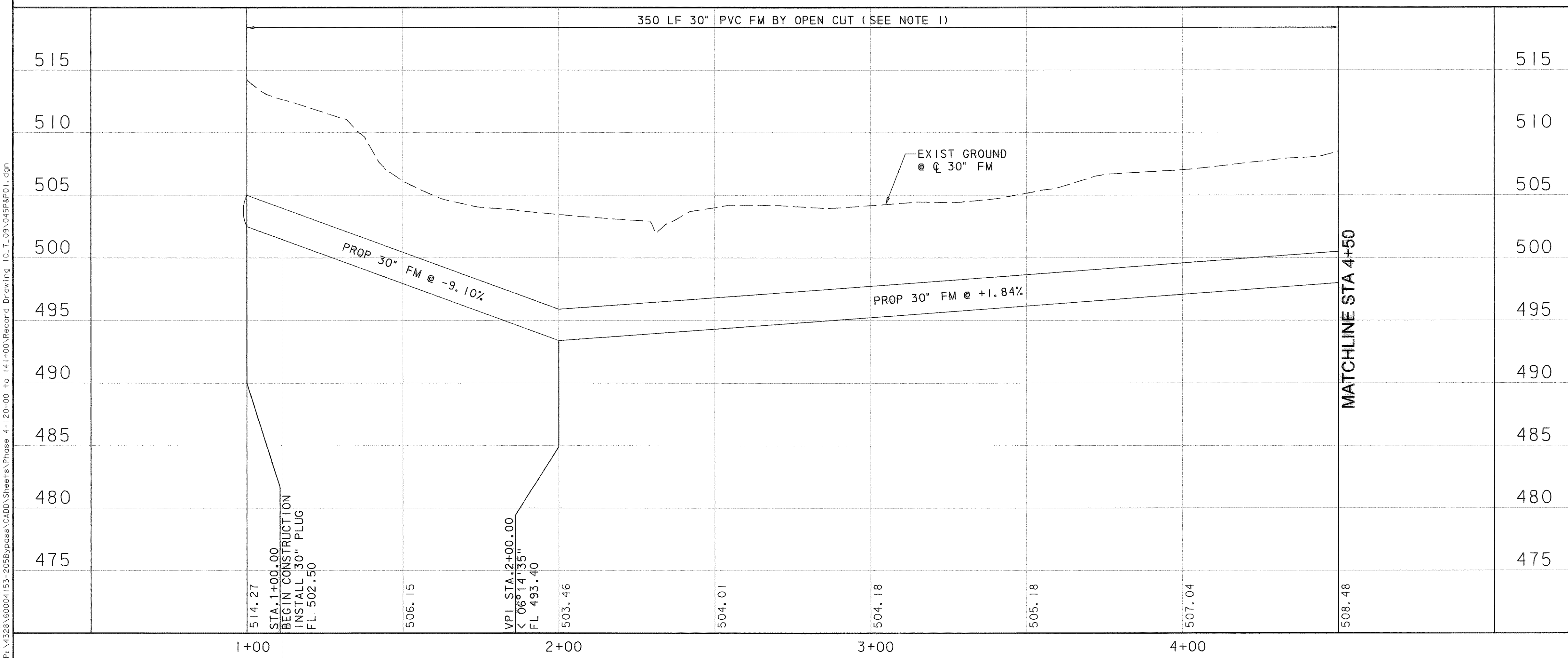
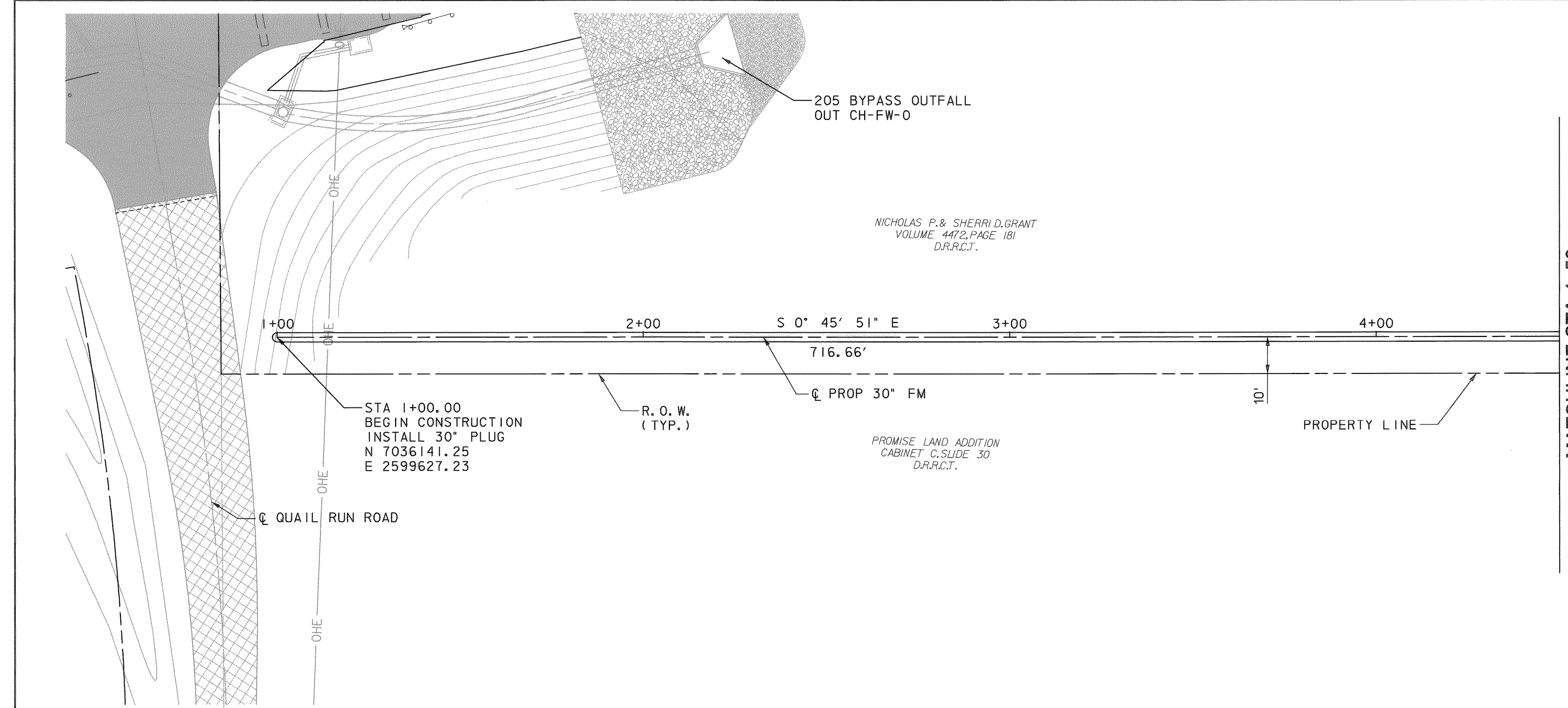


LEGEND

- RIGHT-OF-WAY
- DRAINAGE EASEMENT
- TEMP. CONSTRUCTION EASEMENT
- 205 BYPASS PAVING

UNDERGROUND UTILITIES
 THE LOCATION OF EXISTING UTILITIES SHOWN ON THESE PLANS ARE APPROXIMATE AND BASED ON DATA FURNISHED BY THE CITY OF ROCKWALL. IT IS THE RESPONSIBILITY OF THE CONTRACTOR TO LOCATE AND VERIFY ON-SITE THE UTILITIES THAT MAY CONFLICT WITH THE CONSTRUCTION.



- NOTES:**
- 30" FORCE MAIN SHALL BE AWWA C905 PVC, DR 21 (200 PSI WORKING PRESSURE), AND GREEN IN COLOR.

RECORD DRAWING
 This drawing is a compilation of the original sealed engineering drawing and modifications by addenda, change orders and information furnished by the contractor. Information shown that was provided by the contractor and others not associated with the design engineer cannot be verified for accuracy or completeness. Original sealed drawing is on file at the office of AECOM USA Group, Inc., TBPE REG. NO. F-3082.

ORIGINAL DRAWING SEALED & SIGNED BY
 Nicholas R. Batker, P.E.
 TX NO. 92749

NO.	REVISION	BY	DATE

City of Rockwall, Texas
205 BYPASS PHASE 4
30" FORCE MAIN PLAN & PROFILE STA 1+00 TO 4+50 1 OF 5

TCB | AECOM
TCB INC. WWW.TCB.AECOM.COM 17300 DALLAS PARKWAY, SUITE 1010 DALLAS, TEXAS 75248

Unit: PW-DAL-FW	Scale: Horiz 1:40 Vert 1:10	Date: 11/11/2009
Designed: JLT/SDB	Checked: NRB	Project No: 60023784
Drawn: TCB	Approved: NRB	Sheet: 45 of 146

11/11/2009 5:27:41 PM
 At: \\4328160004153-205Bypass\CADD\Sheets\Phase 4-120-00 to 141+00\Record Drawing 10-7-03\04RFP01.dgn