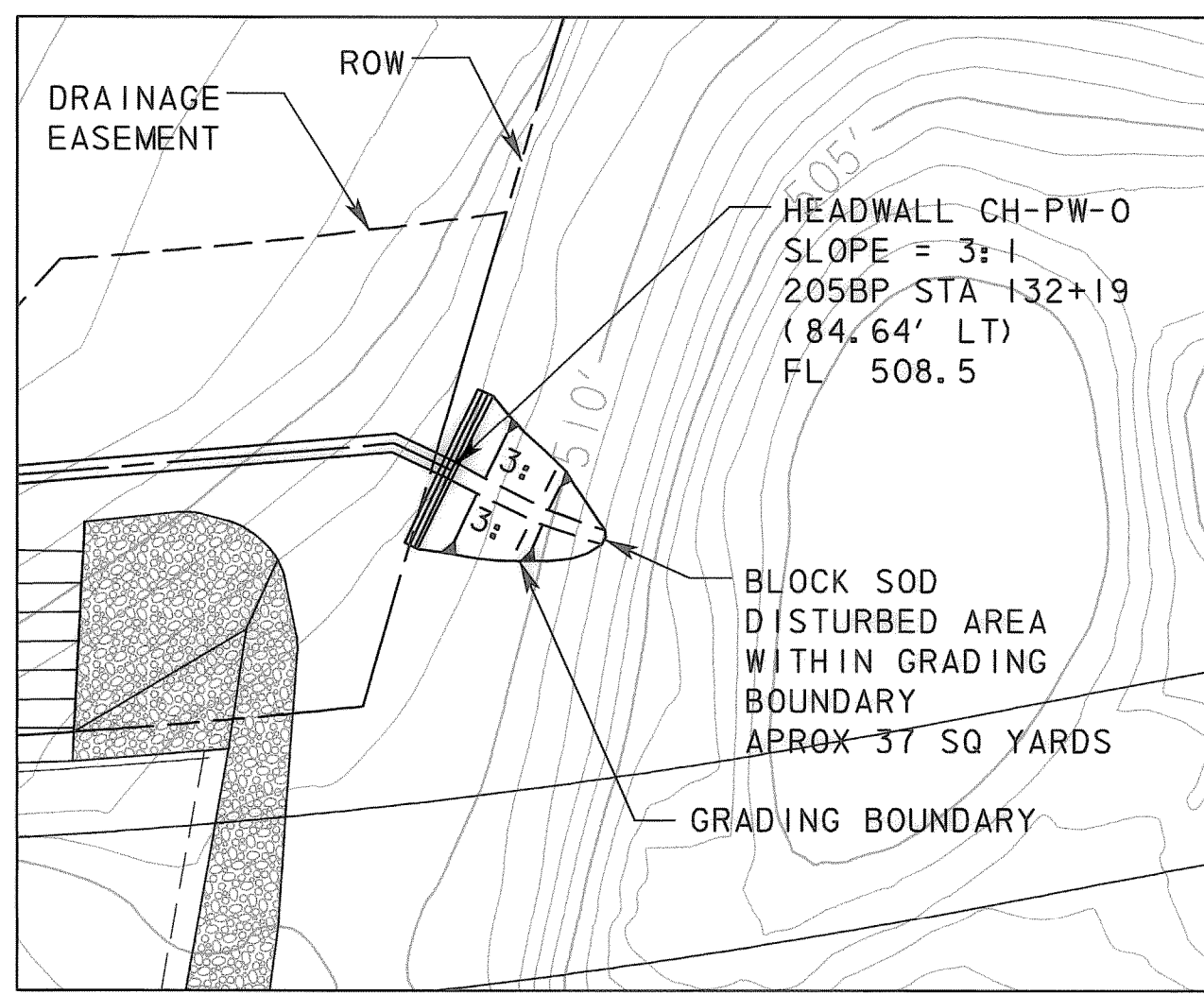
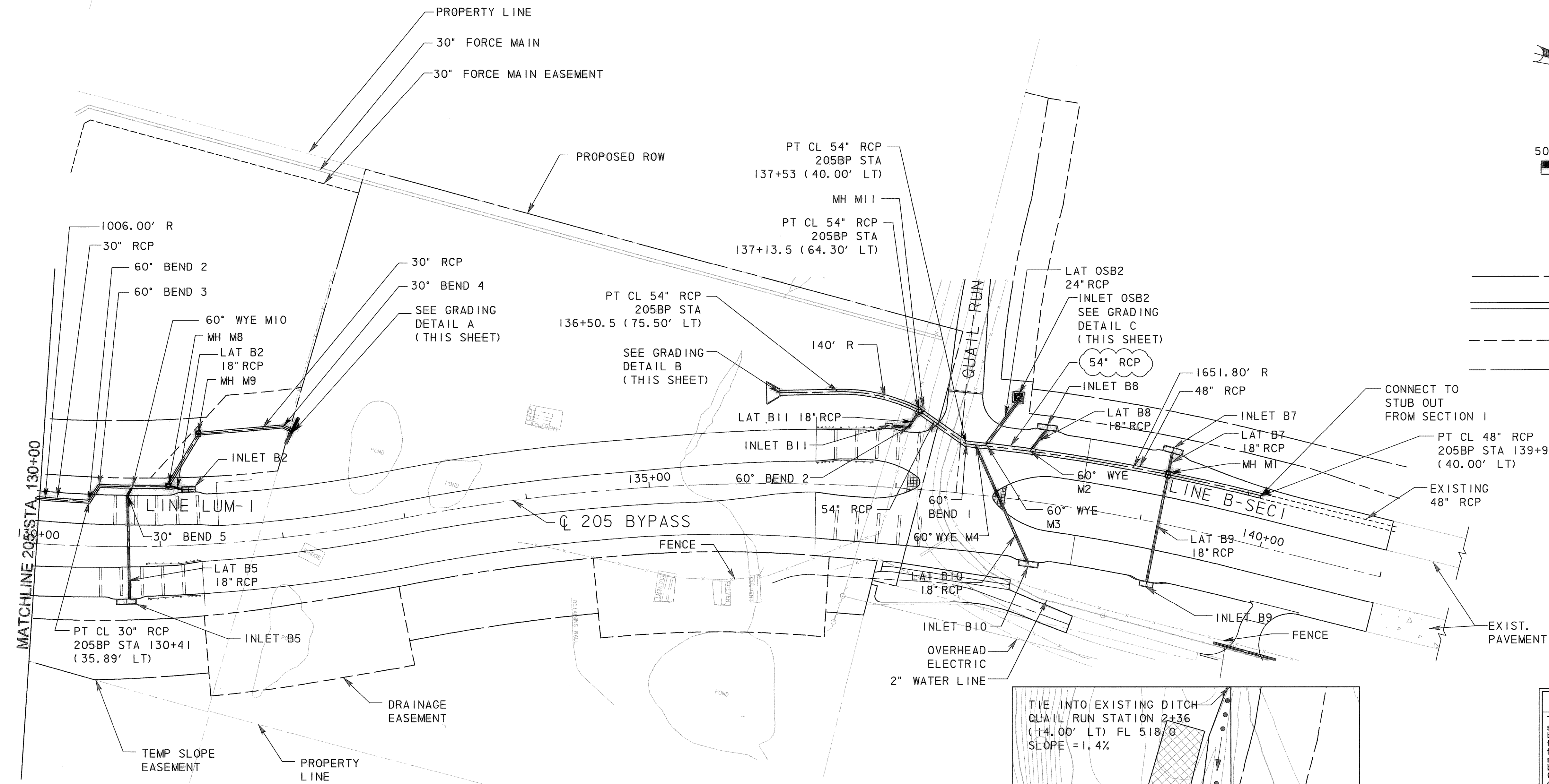
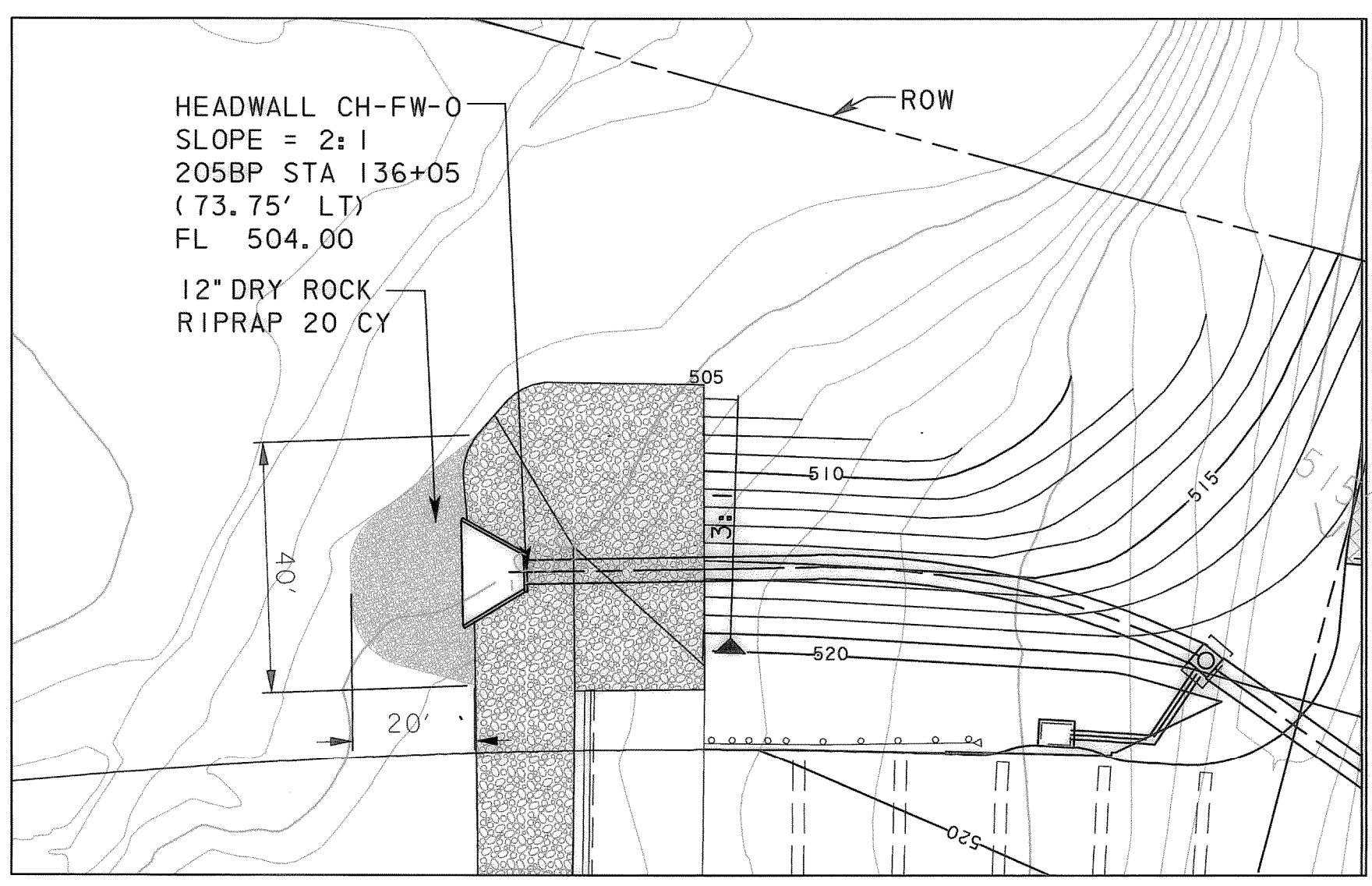


**LEGEND**

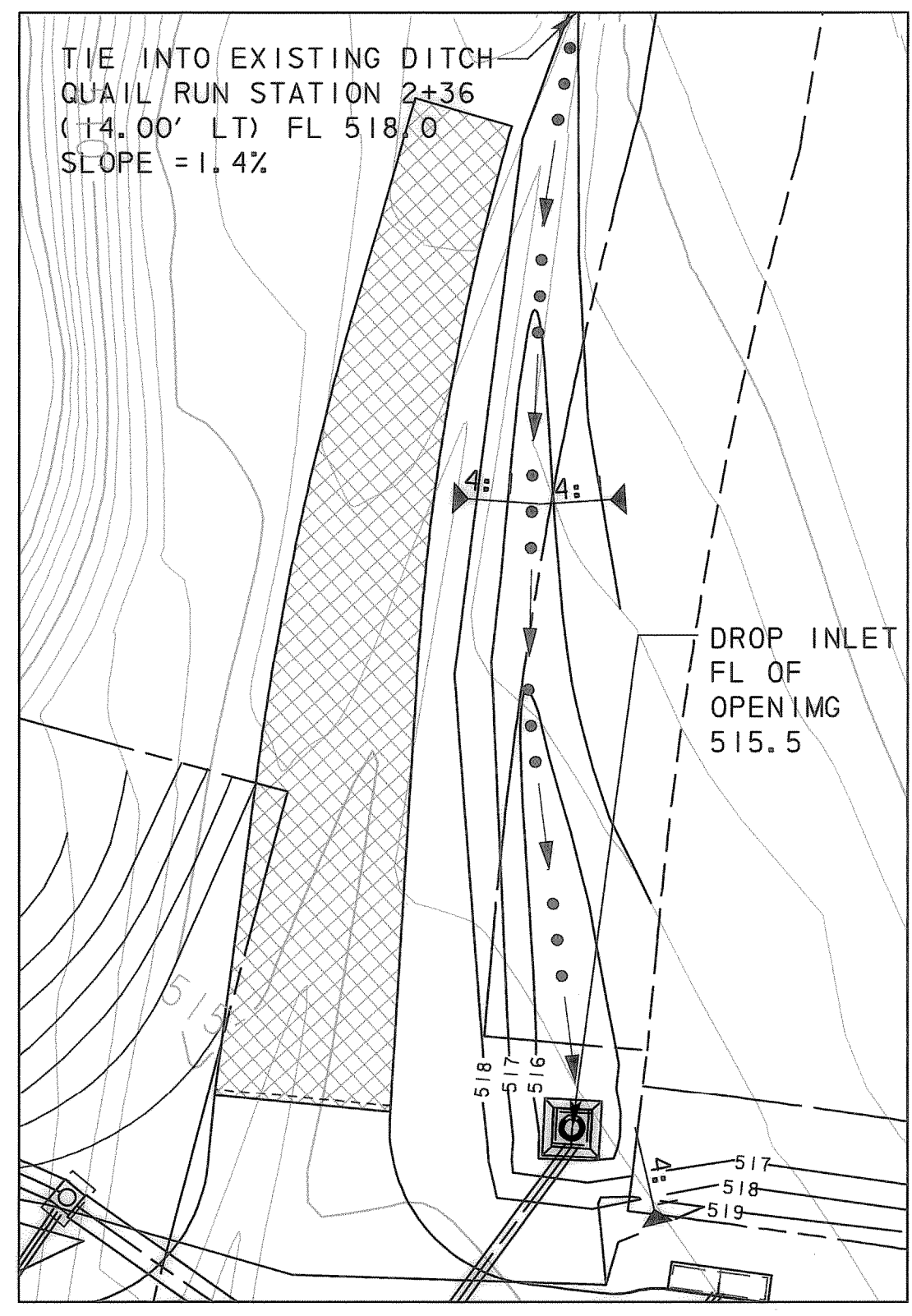
- PROPOSED ROW
- PROPOSED STORM DRAIN
- DRAINAGE EASEMENT
- TEMP. CONST. EASEMENT



GRADING DETAIL A



GRADING DETAIL B



GRADING DETAIL C

**RECORD DRAWING**  
 This drawing is a compilation of the original sealed engineering drawing and modifications by addenda, change orders and information furnished by the contractor. Information shown that was provided by the contractor and others not associated with the design engineer cannot be verified for accuracy or completeness. Original sealed drawing is on file at the office of AECOM USA Group, Inc., TBPE REG. NO. F-3082

ORIGINAL DRAWING SEALED & SIGNED BY  
 T.H. Gaertner, P.E.  
 TX NO. 37124

NO.	REVISION	BY	DATE
2	LINE B-SECI OUTFALL AND GRADING DETAIL B	THG	09/02/08
1	PIPE SIZE FROM M2 TO M3	THG	5/12/08



**205 BYPASS PHASE 4** 2 OF 2

**STORM PLAN STA. 130+00 TO STA. 140+00**

TCB AECOM  
 TCB INC. WWW.TCB.AECOM.COM  
 17300 DALLAS PARKWAY, SUITE 1010  
 DALLAS, TEXAS 75248

Unit: PW-DAL-FW	Scale: Horz: AS SHOWN Vert: AS SHOWN	Date: 11/11/2009
Designed: SDB	Checked: TCB	Project No: 60004153
Drawn: FG	Approved: TCB	Sheet: 29 of 146

P:\4328\60004153-205Bypass\CADD\Sheets\Phase 4-120+00 to 141+00\Record Drawing 10\_7\_09\0293StormPlan-02.dgn  
 11/11/2009