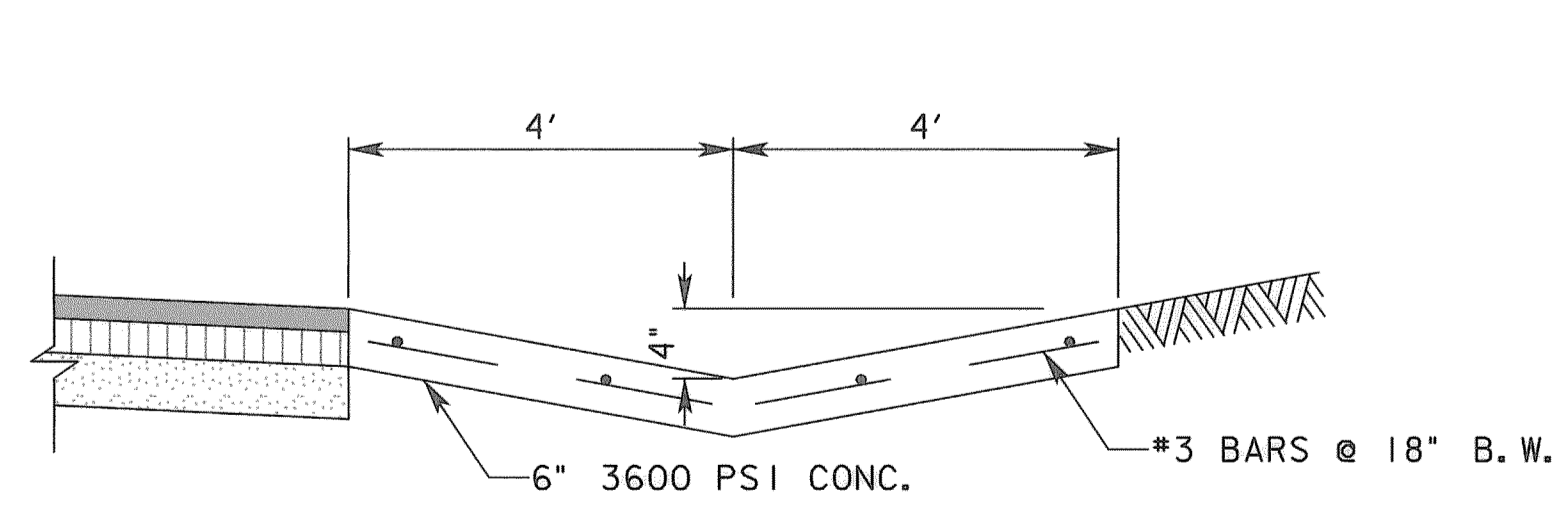
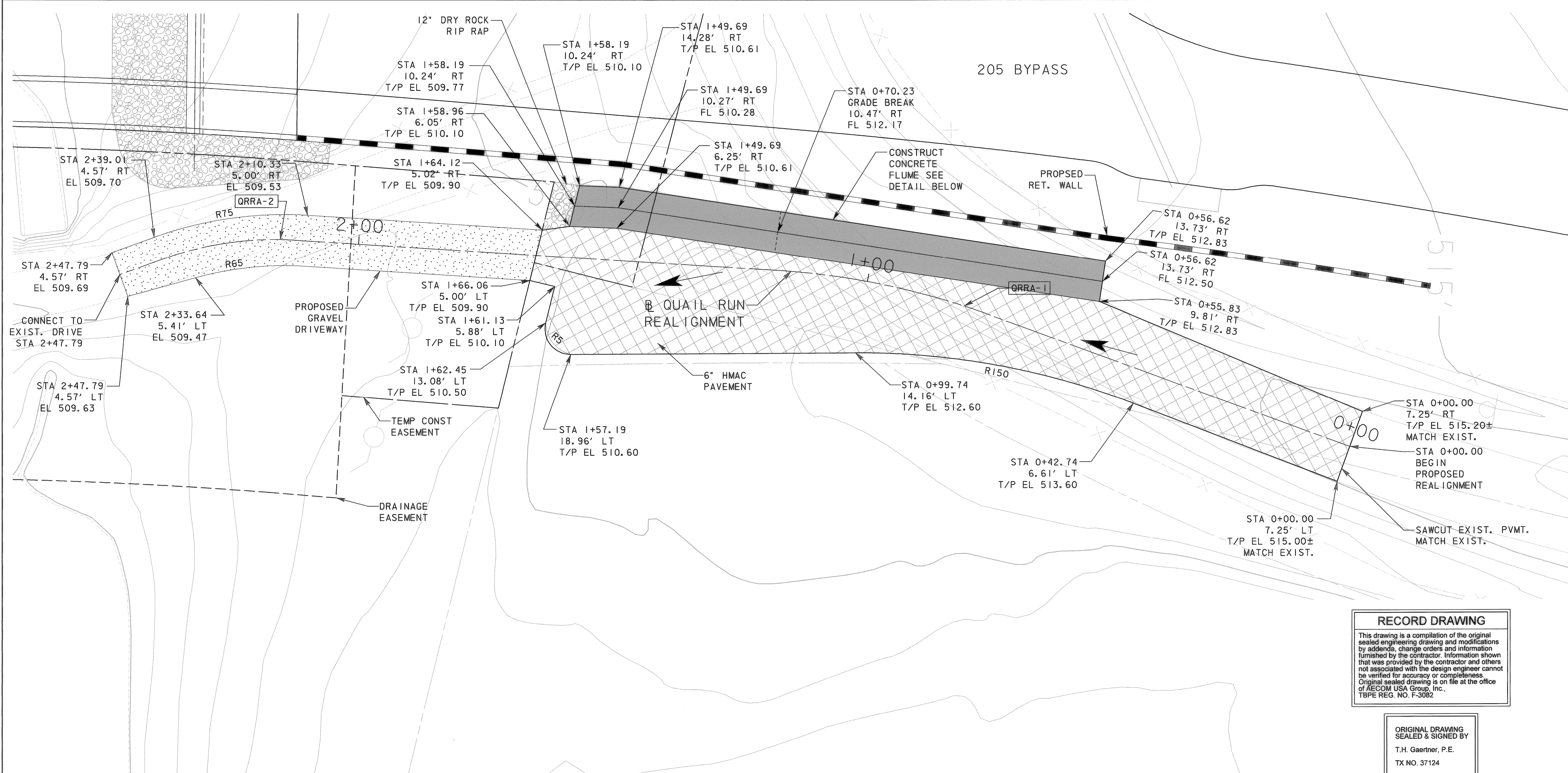
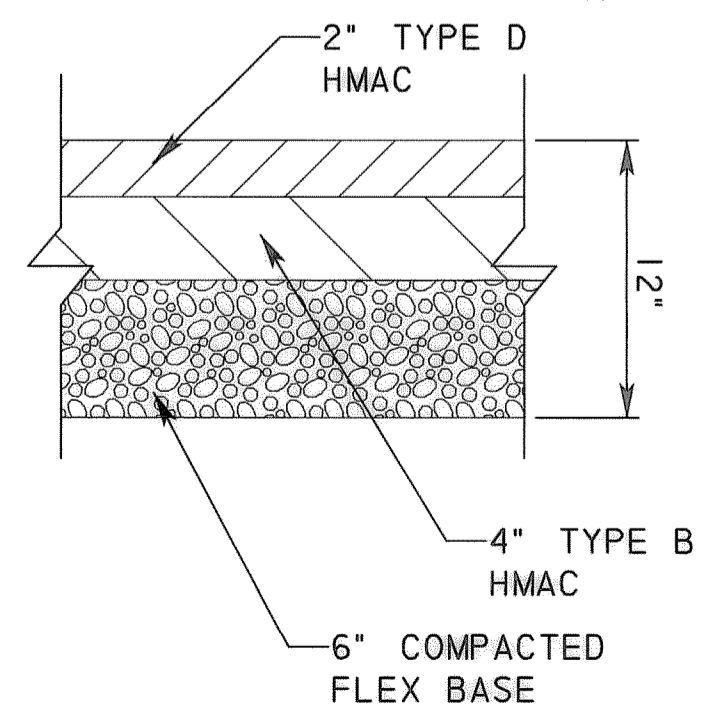


P:\4328\60004153-205Bypass\CADD\Sheets\Phase 4-120-00 to 141-00\Record Drawing 10.7.09\0161\Turnaround Detail 101.dgn
 11/11/2009

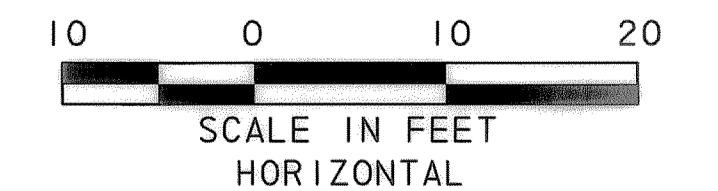
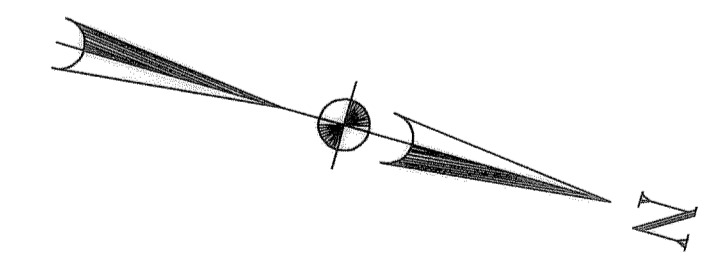


CONCRETE FLUME DETAIL
N. T. S.



PAVEMENT SECTION
N. T. S.

NOTE:
SEE HORIZONTAL CONTROL FOR
BASE LINE BEARINGS



RECORD DRAWING
 This drawing is a compilation of the original sealed engineering drawing and modifications by addenda, change orders and information furnished by the contractor. Information shown that was provided by the contractor and others not associated with the design engineer cannot be verified for accuracy or completeness. Original sealed drawing is on file at the office of AECOM USA Group, Inc., TBPE REG. NO. F-3082

ORIGINAL DRAWING
 SEALED & SIGNED BY
 T.H. Gaertner, P.E.
 TX NO. 37124

I		GENERAL REDESIGN	THG	9/11/08
NO.	REVISION	BY	DATE	
205 BYPASS PHASE 4				
QUAIL RUN REALIGNMENT DETAIL				
1 OF 1				
TCB AECOM		<small>TCB INC. WWW.TCB.AECOM.COM 17300 DALLAS PARKWAY, SUITE 1010 DALLAS, TEXAS 75248</small>		
Unit	PW-DAL-FW	Scale	Horz: AS SHOWN Vert: AS SHOWN	Date 11/11/2009
Designed	THG	Checked	TCB	Project No. 60004153
Drawn	FG	Approved	TCB	Sheet 16 of 146