

**LEGEND**

	RIGHT-OF-WAY
	TEMP. CONSTRUCTION EASEMENT
	DRAINAGE EASEMENT
	CONTROL LINE
	CURVE NUMBER
	RECESSED CURB INLET

**RECORD DRAWING**  
 This drawing is a compilation of the original sealed engineering drawing and modifications by addenda, change orders and information furnished by the contractor. Information shown that was provided by the contractor and others not associated with the design engineer cannot be verified for accuracy or completeness. Original sealed drawing is on file at the office of AECOM USA Group, Inc., TBPE REG. NO. F-3082

**ORIGINAL DRAWING SEALED & SIGNED BY**  
 T.H. Gaertner, P.E.  
 TX NO. 37124

NO.	REVISION	BY	DATE

**City of Rockwall, Texas**

**205 BYPASS PHASE 4**

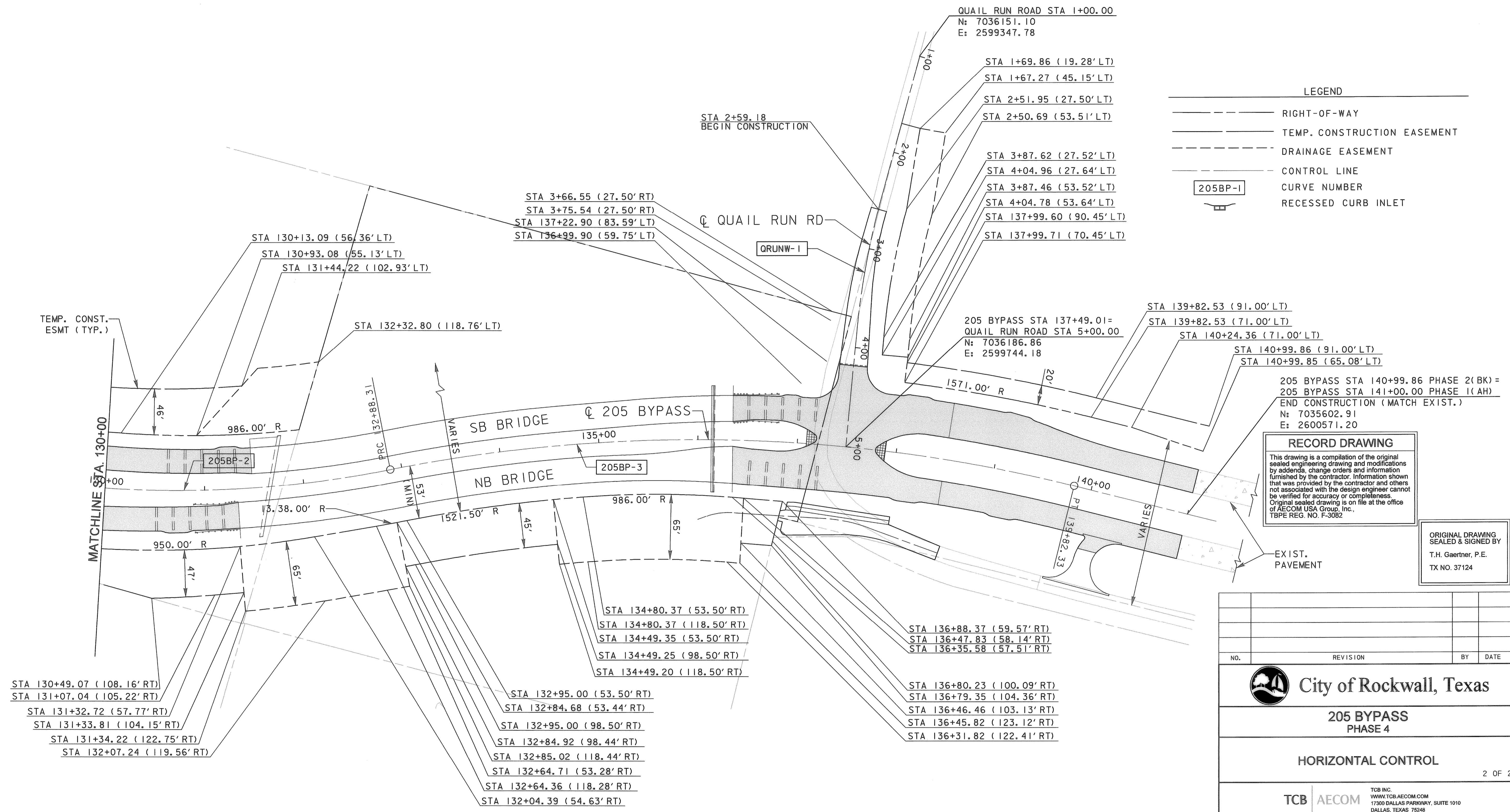
**HORIZONTAL CONTROL**

2 OF 2

**TCB | AECOM** TCB INC. 17300 DALLAS PARKWAY, SUITE 1010 DALLAS, TEXAS 75248

Unit	PW-DAL-FW	Scale	Horz: AS SHOWN Vert: AS SHOWN	Date	11/11/2009
Designed	THG	Checked	TCB	Project No.	60004153
Drawn	FG	Approved	TCB	Sheet	12 of 146

P:\4328\60004153-205Bypass\CADD\Sheets\Phase 4-120\00 to 141\00\Record Drawing 10\_7\_09\02\hor-12L\out-02.dgn  
 11/11/2009



STA 130+49.07 (108.16' RT)  
 STA 131+07.04 (105.22' RT)  
 STA 131+32.72 (57.77' RT)  
 STA 131+33.81 (104.15' RT)  
 STA 131+34.22 (122.75' RT)  
 STA 132+07.24 (119.56' RT)

STA 132+95.00 (53.50' RT)  
 STA 132+84.68 (53.44' RT)  
 STA 132+95.00 (98.50' RT)  
 STA 132+84.92 (98.44' RT)  
 STA 132+85.02 (118.44' RT)  
 STA 132+64.71 (53.28' RT)  
 STA 132+64.36 (118.28' RT)  
 STA 132+04.39 (54.63' RT)

STA 134+80.37 (53.50' RT)  
 STA 134+80.37 (118.50' RT)  
 STA 134+49.35 (53.50' RT)  
 STA 134+49.25 (98.50' RT)  
 STA 134+49.20 (118.50' RT)

STA 136+88.37 (59.57' RT)  
 STA 136+47.83 (58.14' RT)  
 STA 136+35.58 (57.51' RT)

STA 136+80.23 (100.09' RT)  
 STA 136+79.35 (104.36' RT)  
 STA 136+46.46 (103.13' RT)  
 STA 136+45.82 (123.12' RT)  
 STA 136+31.82 (122.41' RT)

QUAIL RUN ROAD STA 1+00.00  
 N: 7036151.10  
 E: 2599347.78

STA 1+69.86 (19.28' LT)  
 STA 1+67.27 (45.15' LT)  
 STA 2+51.95 (27.50' LT)  
 STA 2+50.69 (53.51' LT)

STA 3+87.62 (27.52' LT)  
 STA 4+04.96 (27.64' LT)  
 STA 3+87.46 (53.52' LT)  
 STA 4+04.78 (53.64' LT)  
 STA 137+99.60 (90.45' LT)  
 STA 137+99.71 (70.45' LT)

205 BYPASS STA 137+49.01=  
 QUAIL RUN ROAD STA 5+00.00  
 N: 7036186.86  
 E: 2599744.18

STA 139+82.53 (91.00' LT)  
 STA 139+82.53 (71.00' LT)  
 STA 140+24.36 (71.00' LT)  
 STA 140+99.86 (91.00' LT)  
 STA 140+99.85 (65.08' LT)

205 BYPASS STA 140+99.86 PHASE 2(BK) =  
 205 BYPASS STA 141+00.00 PHASE 1(AH)  
 END CONSTRUCTION (MATCH EXIST.)  
 N: 7035602.91  
 E: 2600571.20