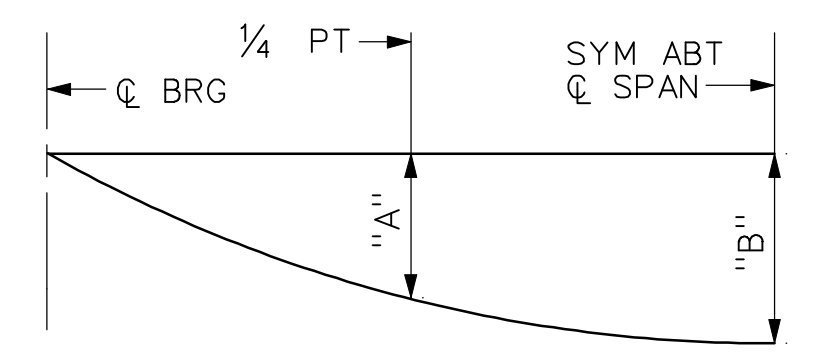
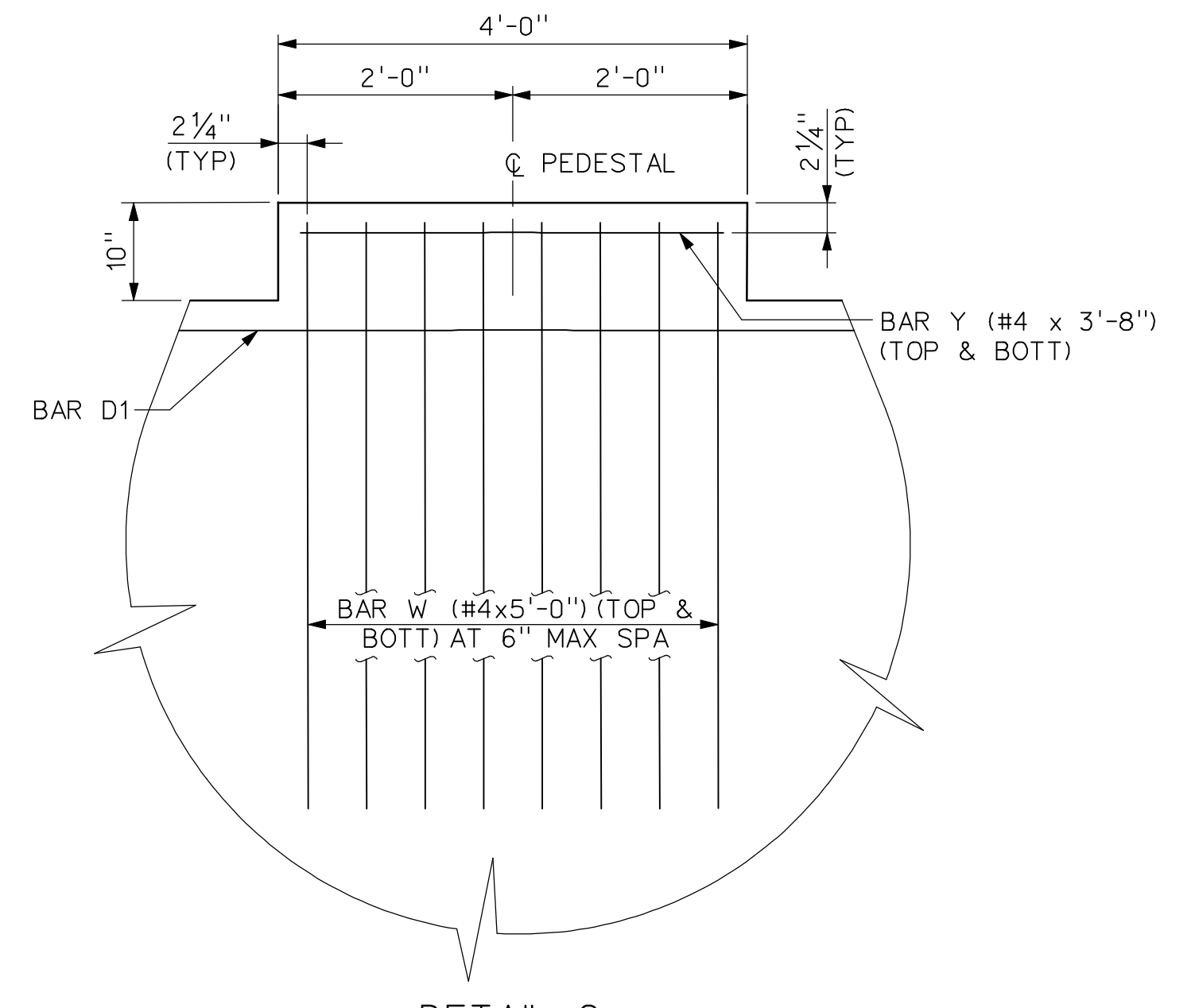


SPAN 2 MAX	3.035'	6 EQ SPA	3.006'
SPAN 2 MIN	1.250'	6 EQ SPA	4.114'
SPAN 2 MAX	4.410'	6 EQ SPA	2.615'
SPAN 2 MIN	2.606'		1.498'



SPAN	BEAMS	"X" @ CL BRG	"Y" @ CL BRG	"Z" @ CL SPAN
1	1	1'-0"	5'-6"	8 3/4"
1	2-5	1'-0"	5'-6"	9"
1	6	1'-0"	5'-6"	9 1/4"
2	1	1 1/4"	5'-5 1/4"	9"
2	2-5	1 1/4"	5'-5 1/4"	9 1/2"
2	6	1 1/4"	5'-5 1/4"	9 1/4"

\* HAUNCH REINFORCING REQUIRED IN ALL AREAS WHERE HAUNCH EXCEEDS 3". SEE IBMS FOR "HAUNCH REINFORCING DETAIL". SEE TABLE ON SHEET 1 OF 2 FOR NUMBER OF U BARS REQUIRED.

SPAN	BEAM	"A"	"B"
		FT	FT
1	1	0.150	0.211
1	2-3	0.182	0.257
1	4-5	0.171	0.241
1	6	0.172	0.242
2	1	0.181	0.255
2	2-3	0.176	0.249
2	4-5	0.166	0.233
2	6	0.149	0.210

DEAD LOAD DEFLECTION DIAGRAM  
CALCULATED DEFLECTIONS SHOWN ARE DUE TO THE CONCRETE SLAB ONLY (EC = 5000 KSI). ADJUST VALUES AS REQUIRED IF OPTIONAL SLAB FORMING IS USED. THESE VALUES MAY REQUIRE FIELD VERIFICATION.

**RECORD DRAWING**  
This drawing is a compilation of the original sealed engineering drawing and modifications by addenda, change orders and information furnished by the contractor. Information shown that was provided by the contractor and others not associated with the design engineer cannot be verified for accuracy or completeness. Original sealed drawing is on file at the office of AECOM USA Group, Inc., TBPE REG. NO. F-3082

ORIGINAL DRAWING SEALED & SIGNED BY  
Wally R. Burns, P.E.  
TX NO. 44162

HL93 LOADING

NO.	REVISION	BY	DATE

**City of Rockwall, Texas**  
205 BYPASS PHASE 4  
SOUTHBOUND 205 BYPASS BRIDGE OVER PHELPS CK  
241.31' PRESTR CONCRETE BEAM UNIT  
(SPANS 1 & 2) 2 OF 2

Unit	PW-DAL-FW	Scale	NOT TO SCALE	Date	11/23/2009
Designed	SDH	Checked	TCB	Project No.	60004153
Drawn	SDH	Approved	TCB	Sheet	118 of 146

P:\328 60004153-205bypass\cadd\sheets\phase 4-120-00 to 141-00\record drawing 10\_7\_09\118\_205BP-BR-5B-SLO1b.dgn  
11/23/2009