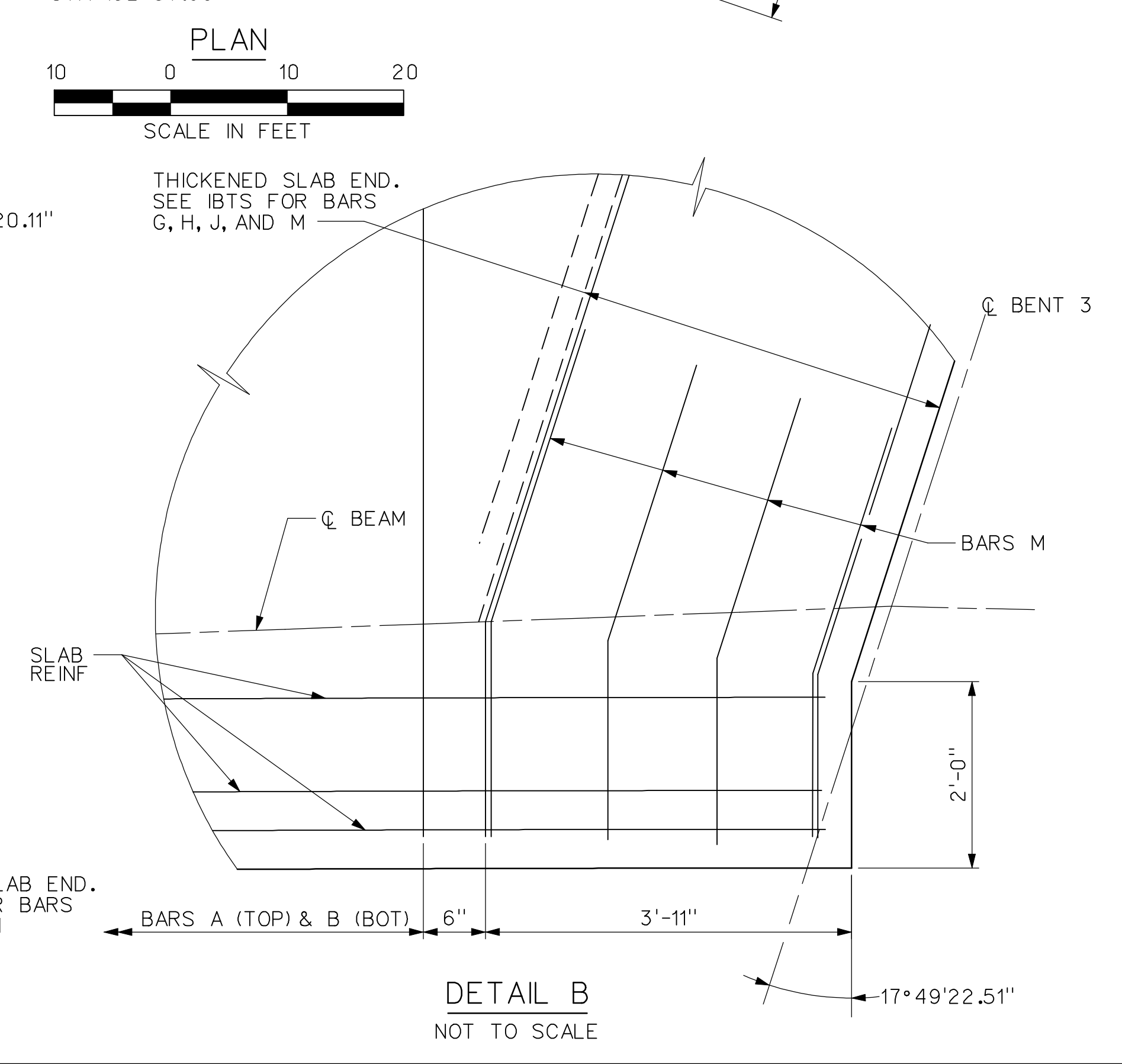
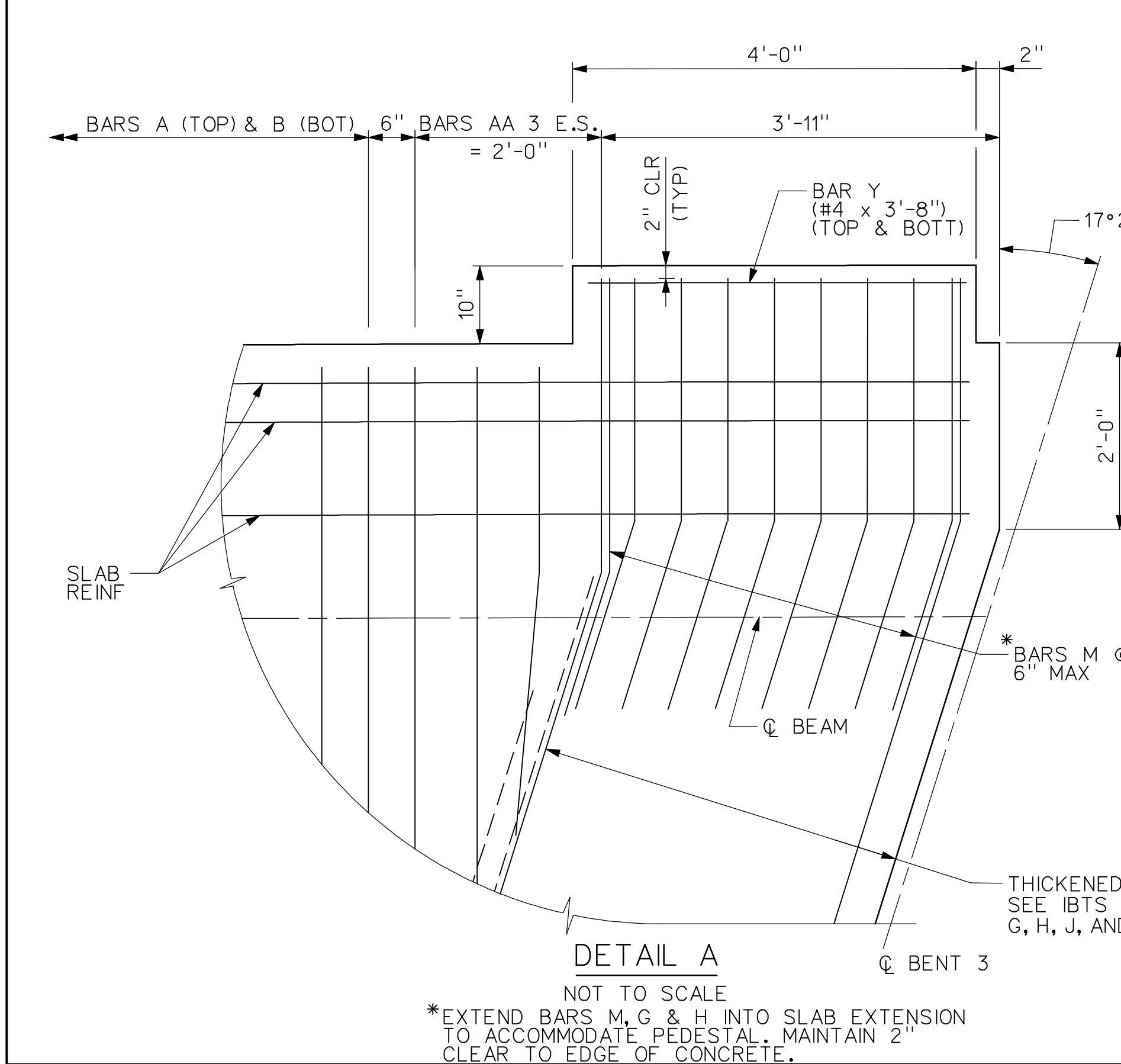
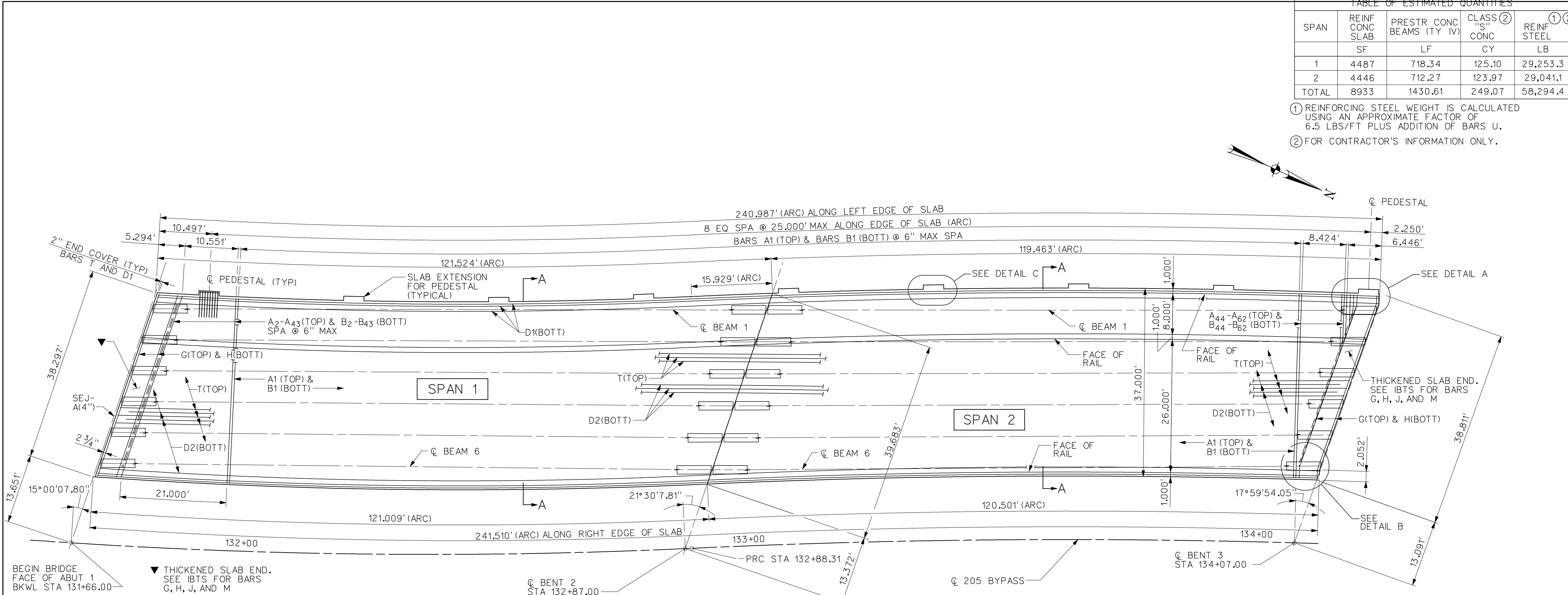


| TABLE OF ESTIMATED QUANTITIES | | | | |
|-------------------------------|-----------------|---------------------------|------------------|-----------------|
| SPAN | REINF CONC SLAB | PRESTR CONC BEAMS (TY IV) | CLASS ② "S" CONC | REINF STEEL ① ② |
| | SF | LF | CY | LB |
| 1 | 4487 | 718.34 | 125.10 | 29,253.3 |
| 2 | 4446 | 712.27 | 123.97 | 29,041.1 |
| TOTAL | 8933 | 1430.61 | 249.07 | 58,294.4 |

① REINFORCING STEEL WEIGHT IS CALCULATED USING AN APPROXIMATE FACTOR OF 6.5 LBS/FT PLUS ADDITION OF BARS U.
 ② FOR CONTRACTOR'S INFORMATION ONLY.



GENERAL NOTES:

DESIGNED ACCORDING TO CURRENT AASHTO LRFD STANDARD AND INTERIM SPECIFICATIONS FOR HL-93 LOADING.

SEE IBTS STANDARD FOR THICKENED SLAB END DETAILS AND QUANTITY ADJUSTMENTS.

SEE PCP OR PMDF STANDARDS FOR DETAILS AND QUANTITY ADJUSTMENTS IF EITHER OF THESE OPTIONS ARE USED.

SEE IBMS STANDARD FOR MISCELLANEOUS DETAILS.

ALL REINFORCING SHALL BE GRADE 60.

CONCRETE STRENGTH $f'_c = 4,000$ psi.

ALL REINFORCING SHALL BE EPOXY COATED.

BAR LAPS WHERE REQUIRED, SHALL BE AS FOLLOWS: EPOXY COATED - #4 - 2'-1" EPOXY COATED - #5 - 2'-7"

SEE RAILING DETAILS FOR RAIL ANCHORAGE IN SLAB.

RECORD DRAWING

This drawing is a compilation of the original sealed engineering drawing and modifications by addenda, change orders and information furnished by the contractor. Information shown that was provided by the contractor and others not associated with the design engineer cannot be verified for accuracy or completeness. Original sealed drawing is on file at the office of AECOM USA Group, Inc., TBPE REG. NO. F-3082

ORIGINAL DRAWING SEALED & SIGNED BY
 Wally R. Burns, P.E.
 TX NO. 44162

| BARS U | |
|--------|-----|
| SPAN | NO. |
| 1 | 52 |
| 2 | 84 |

| BAR TABLE | |
|-----------|------|
| BAR | SIZE |
| A | #5 |
| B | #5 |
| D | #5 |
| G | #5 |
| H | #5 |
| J | #5 |
| M | #5 |
| T | #4 |

HL93 LOADING

| NO. | REVISION | BY | DATE |
|-----|----------|----|------|
| | | | |

City of Rockwall, Texas

205 BYPASS PHASE 4

SOUTHBOUND 205 BYPASS BRIDGE OVER PHELPS CK
241.31' PRESTR CONCRETE BEAM UNIT
 (SPANS 1 & 2) 1 OF 2

TCB AECOM
 TCB INC. WWW.TCB.AECOM.COM
 17300 DALLAS PARKWAY, SUITE 1010
 DALLAS, TEXAS 75248

| Unit | PW-DAL-FW | Scale | NOT TO SCALE | Date | 11/23/2009 |
|----------|-----------|----------|--------------|-------------|------------|
| Designed | SDH | Checked | | Project No. | 60004153 |
| Drawn | SDH | Approved | | Sheet | 117 of 146 |

P:\328\60004153-205bypass\cadd\sheet\phase 4-120-00 to 141+00\record drawing 10_7_09\117_205BP-BR-SB-SL01a.dgn
 11/23/2009