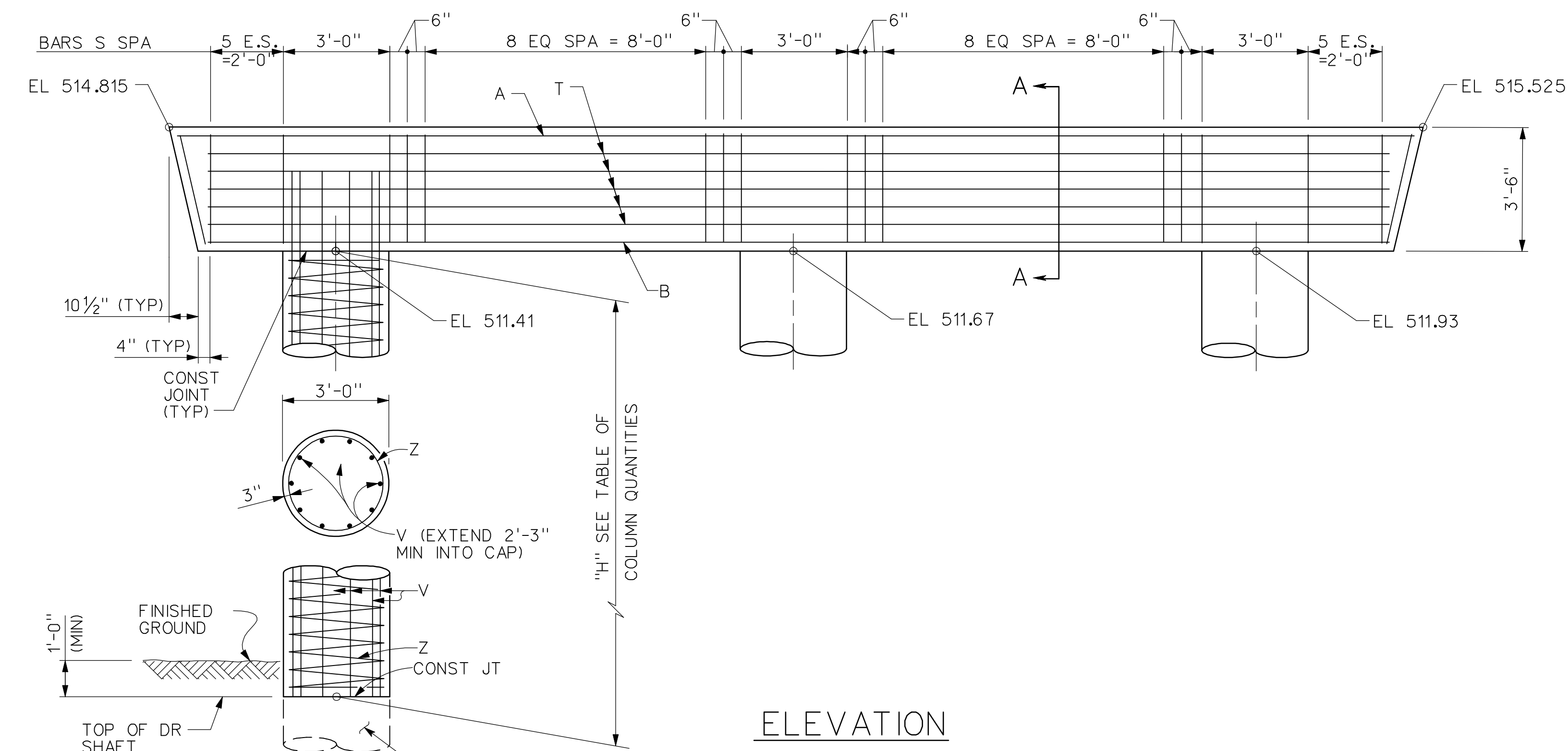


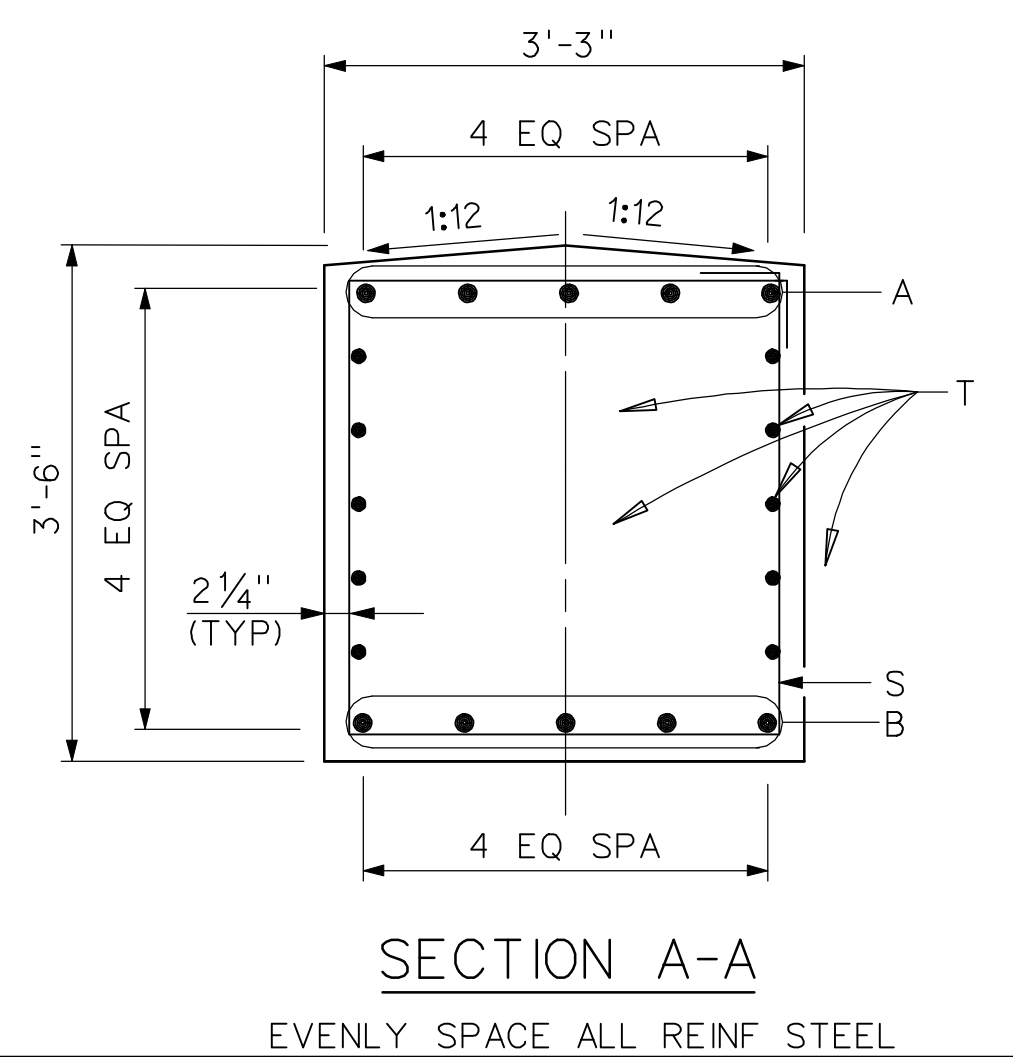
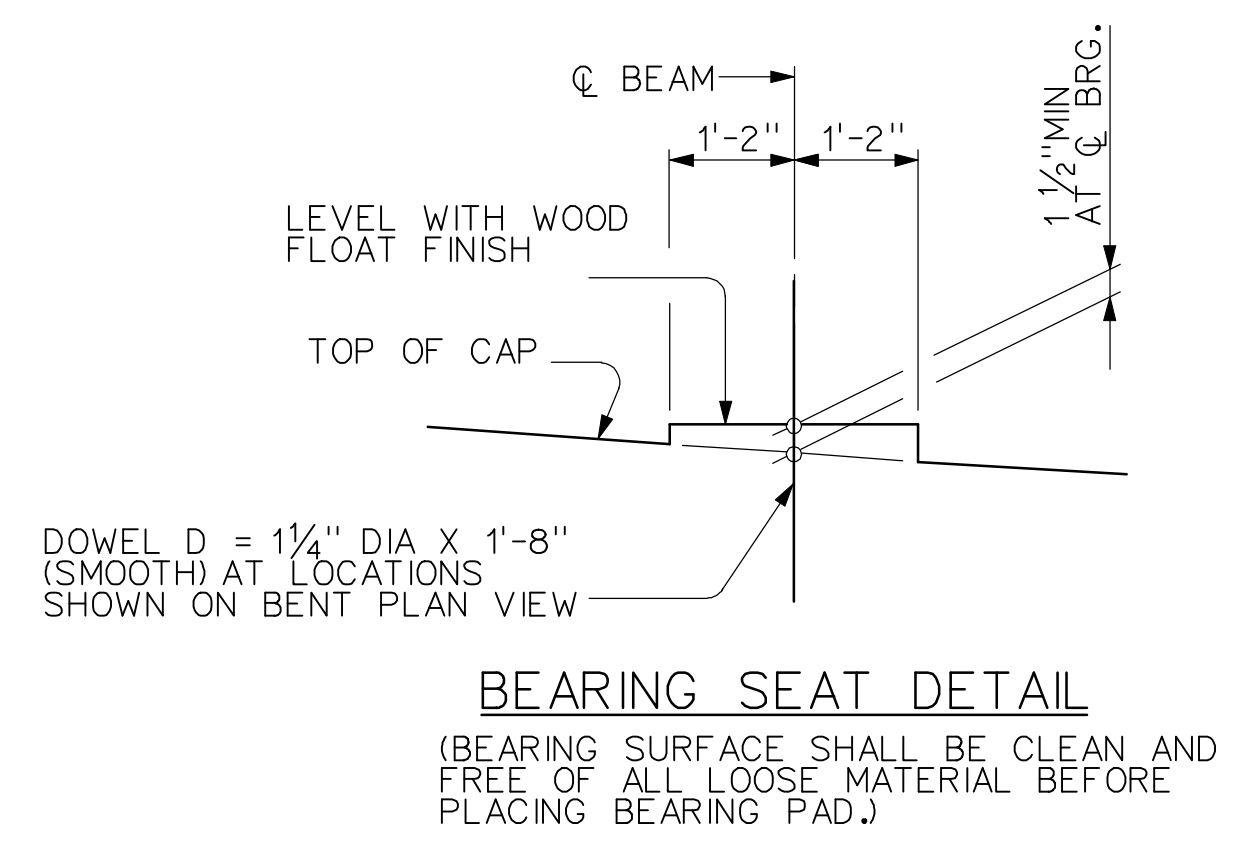
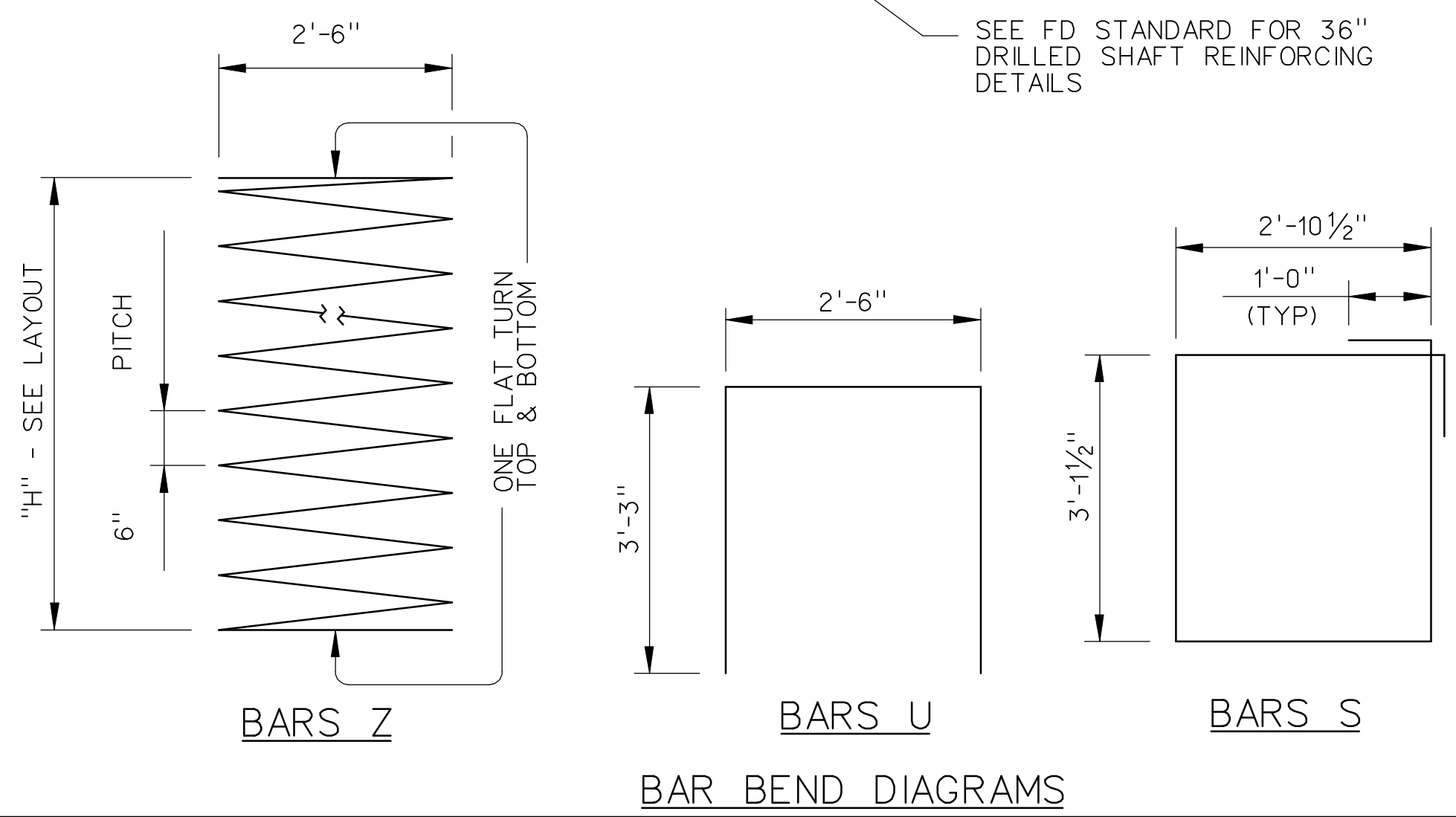
BILL OF REINFORCING STEEL ②				
BAR	No	SIZE	LENGTH	WEIGHT
A	8	#11	34'-12"	1,488
B	6	#11	33'-0"	1,052
D	4	1 1/4" D	1'-8"	28
S	38	#6	14'-0"	799
T	10	#5	33'-0"	344
U	2	#5	9'-5"	20
V	30	#9	11'-3"	1,148
Z	3	#3	158'-0"	178
TOTAL				5,057
ESTIMATED QUANTITIES				
ITEM	UNIT	QUANTITY		
② REINFORCING STEEL	LB	5,057		
CLASS C CONC (CAP)	CY	14.8		
CLASS C CONC (COL)	CY	7.1		
② FOR CONTRACTOR INFORMATION ONLY				



- NOTES:
- DESIGNED IN ACCORDANCE TO AASHTO LRFD SPECIFICATIONS.
 - ALL CONCRETE SHALL BE CLASS "C" WITH MINIMUM COMPRESSIVE STRENGTH $f'_c = 3600$ PSI.
 - CHAMFER ALL EXPOSED CORNERS $3/4"$ UNLESS OTHERWISE SHOWN FOR NOTED.
 - ALL REINFORCING STEEL SHALL BE ASTM A-615, GRADE 60.
 - ALL REINFORCING STEEL SHALL HAVE 2" CLEAR COVER UNLESS OTHERWISE SHOWN OR NOTED.
 - MAXIMUM CALCULATED 36" DIA DRILLED SHAFT LOAD = 305 TONS/SHAFT

RECORD DRAWING
 This drawing is a compilation of the original sealed engineering drawing and modifications by addenda, change orders and information furnished by the contractor. Information shown that was provided by the contractor and others not associated with the design engineer cannot be verified for accuracy or completeness. Original sealed drawing is on file at the office of AECOM USA Group, Inc., TBPE REG. NO. F-3082

ORIGINAL DRAWING SEALED & SIGNED BY
 Wally R. Burns, P.E.
 TX NO. 44162



HL 93 LOADING

NO.	REVISION	BY	DATE

City of Rockwall, Texas

205 BYPASS PHASE 4

SOUTHBOUND 205 BYPASS BRIDGE OVER PHELPS CREEK

INTERIOR BENT 4 PLAN AND ELEVATION | OF |

TCB INC. WWW.TCB.AECOM.COM
 17300 DALLAS PARKWAY, SUITE 1010
 DALLAS, TEXAS 75248

Unit PW-DAL-FW Scale 3/8" = 1'-0" Date 11/23/2009
 Designed SDH Checked TCB Project No. 60004153
 Drawn SDH Approved TCB Sheet 114 of 146

P:\328\60004153-205bypass\cadd\sheet\phase 4-120-00 to 141+00\record drawing 10_7_09\114_205BP-BR-SB-K004.dgn
 11/23/2009