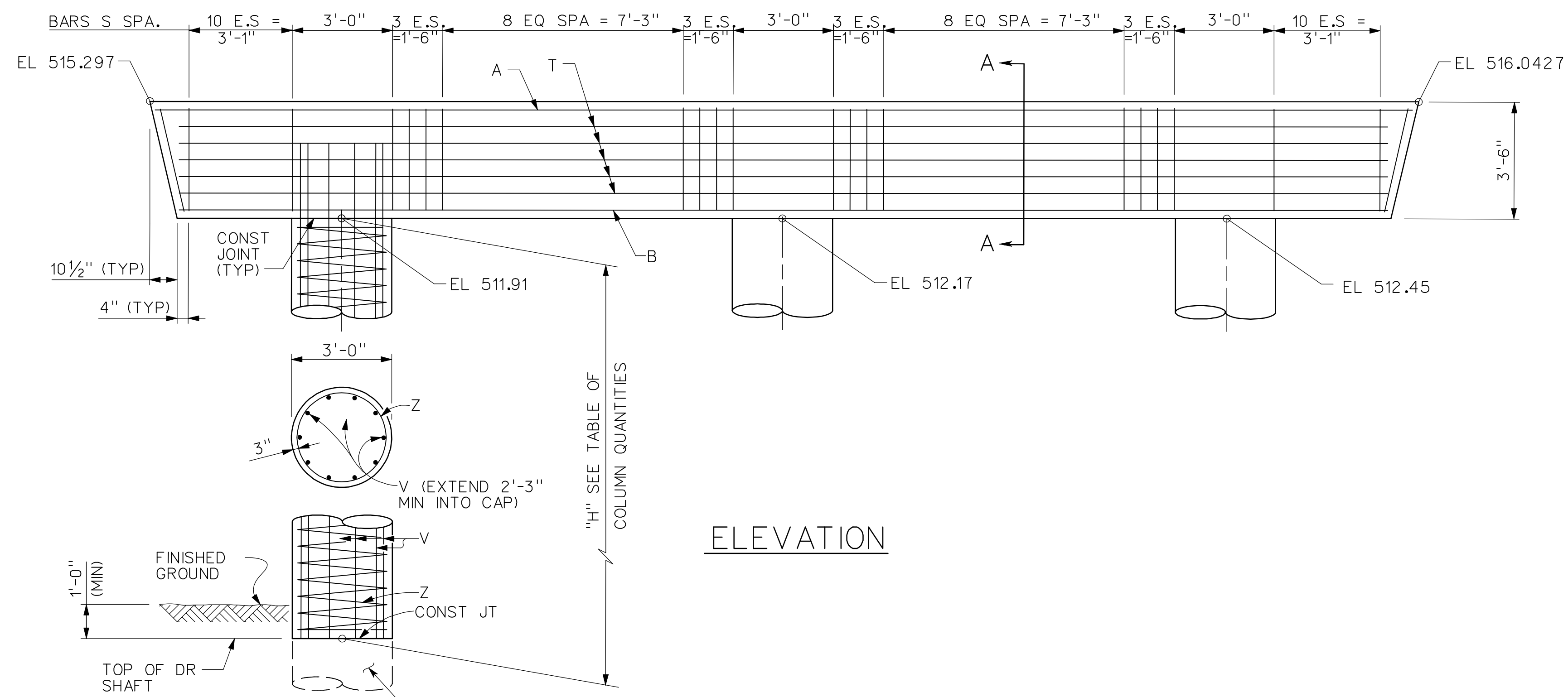
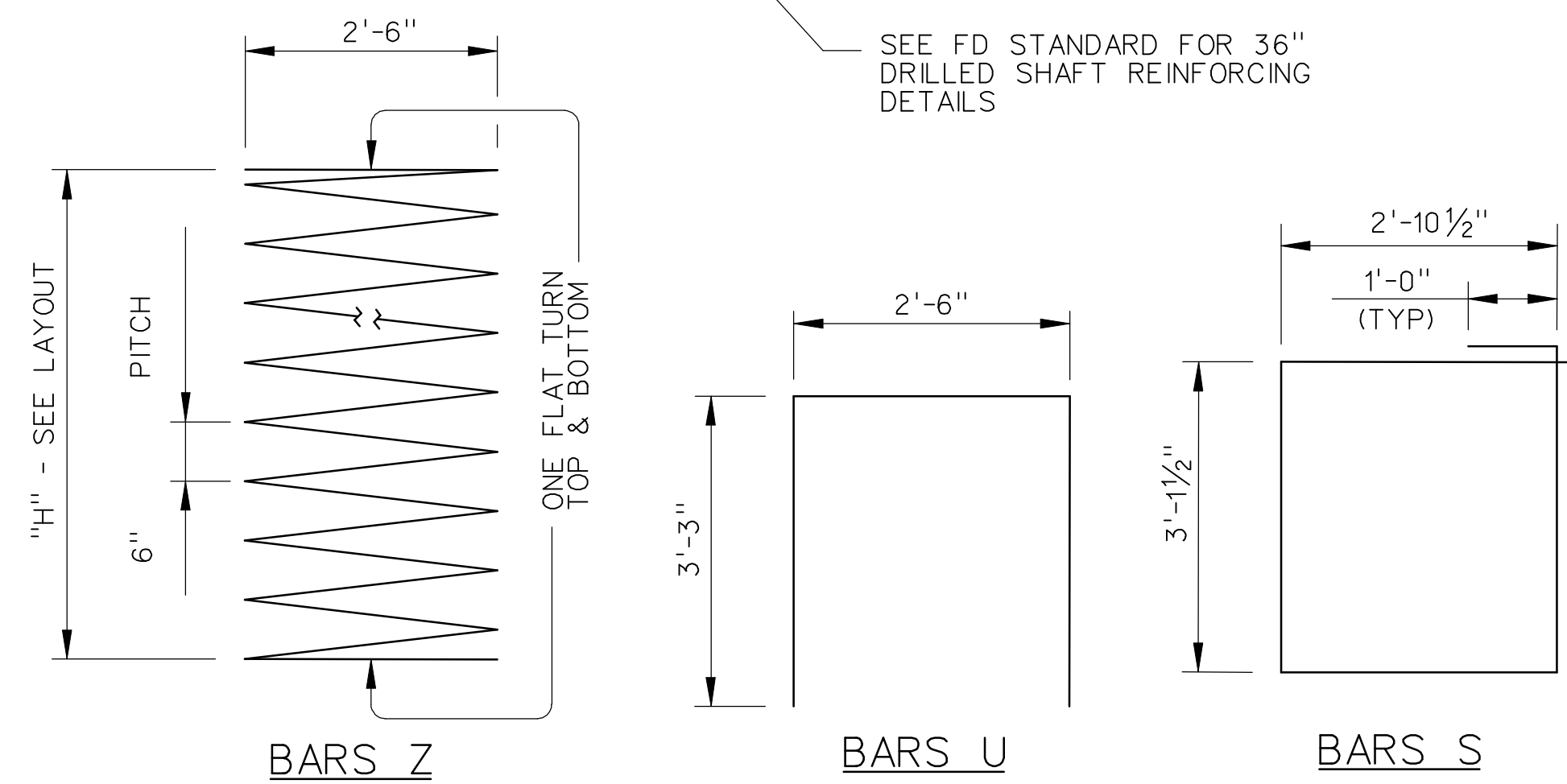


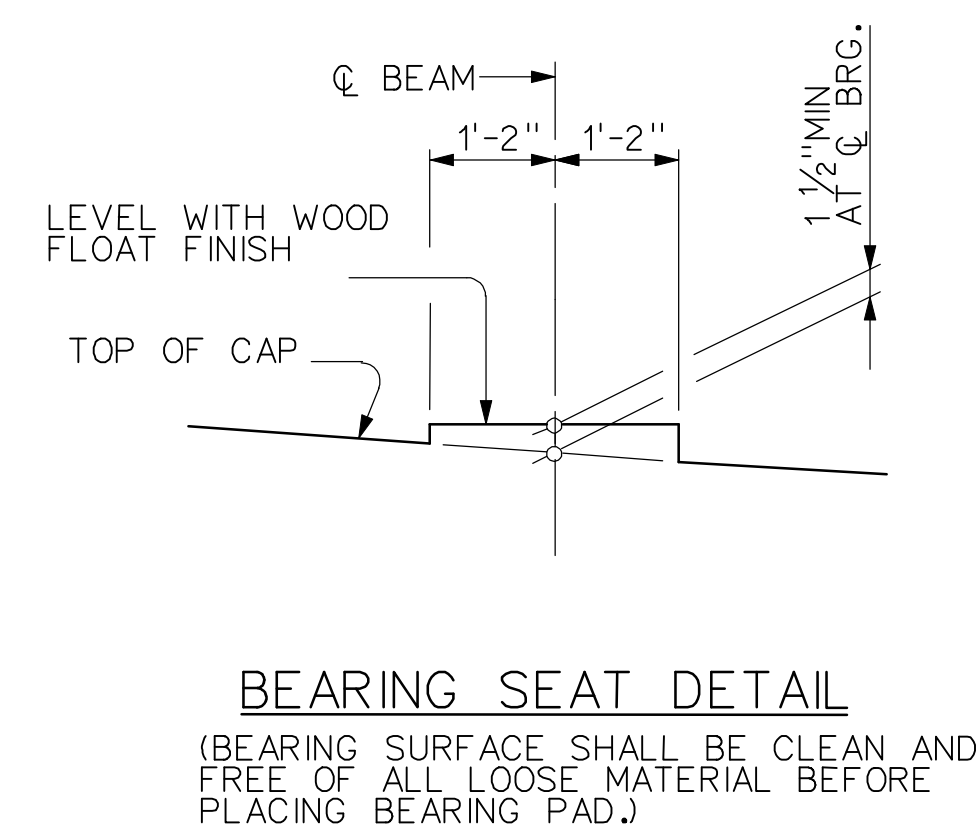
PLAN



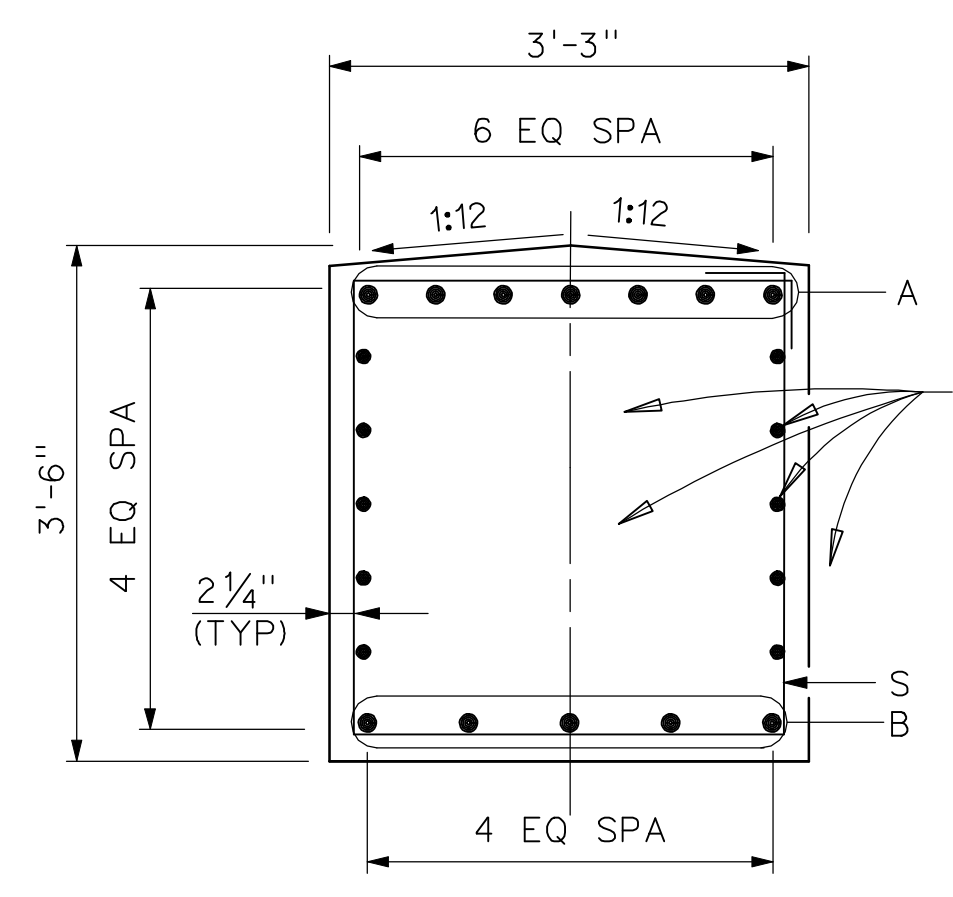
ELEVATION



BAR BEND DIAGRAMS



BEARING SEAT DETAIL  
(BEARING SURFACE SHALL BE CLEAN AND FREE OF ALL LOOSE MATERIAL BEFORE PLACING BEARING PAD.)



SECTION A-A  
EVENLY SPACE ALL REINF STEEL

BILL OF REINFORCING STEEL ②				
BAR	No	SIZE	LENGTH	WEIGHT
A	8	#11	37'-6"	1,594
B	6	#11	35'-6"	1,132
S	52	#6	14'-0"	1,093
T	10	#5	35'-6"	370
U	2	#5	9'-5"	20
V	30	#9	8'-3"	842
Z	3	#3	111'-0"	125
TOTAL				5,176

ESTIMATED QUANTITIES		
ITEM	UNIT	QUANTITY
② REINFORCING STEEL	LB	5,176
CLASS C CONC (CAP)	CY	15.9
CLASS C CONC (COL)	CY	4.7

② FOR CONTRACTOR INFORMATION ONLY

NOTES:

- DESIGNED IN ACCORDANCE TO AASHTO LRFD SPECIFICATIONS.
- ALL CONCRETE SHALL BE CLASS "C" WITH MINIMUM COMPRESSIVE STRENGTH  $f'_c = 3600$  PSI.
- CHAMFER ALL EXPOSED CORNERS  $3/4"$  UNLESS OTHERWISE SHOWN FOR NOTED.
- ALL REINFORCING STEEL SHALL BE ASTM A-615, GRADE 60.
- ALL REINFORCING STEEL SHALL HAVE 2" CLEAR COVER UNLESS OTHERWISE SHOWN OR NOTED.
- MAXIMUM CALCULATED 36" DIA DRILLED SHAFT LOAD = 326 TONS/SHAFT

RECORD DRAWING

This drawing is a compilation of the original sealed engineering drawing and modifications by addenda, change orders and information furnished by the contractor. Information shown that was provided by the contractor and others not associated with the design engineer cannot be verified for accuracy or completeness. Original sealed drawing is on file at the office of AECOM USA Group, Inc., TBPE REG. NO. F-3082

ORIGINAL DRAWING SEALED & SIGNED BY  
Wally R. Burns, P.E.  
TX NO. 44162

HL 93 LOADING

NO.	REVISION	BY	DATE
<b>205 BYPASS PHASE 4</b>			
<b>SOUTHBOUND 205 BYPASS BRIDGE OVER PHELPS CREEK</b>			
<b>INTERIOR BENT 3 PLAN AND ELEVATION</b>			
<b>TCB AECOM</b>			
<small>TCB INC. WWW.TCB.AECOM.COM 17300 DALLAS PARKWAY, SUITE 1010 DALLAS, TEXAS 75248</small>			
Unit	PW-DAL-FW	Scale	3/8" = 1'-0"
Designed	SDH	Checked	TCB
Drawn	SDH	Approved	TCB
Date	11/23/2009	Project No.	60004153
Sheet	113	of	146