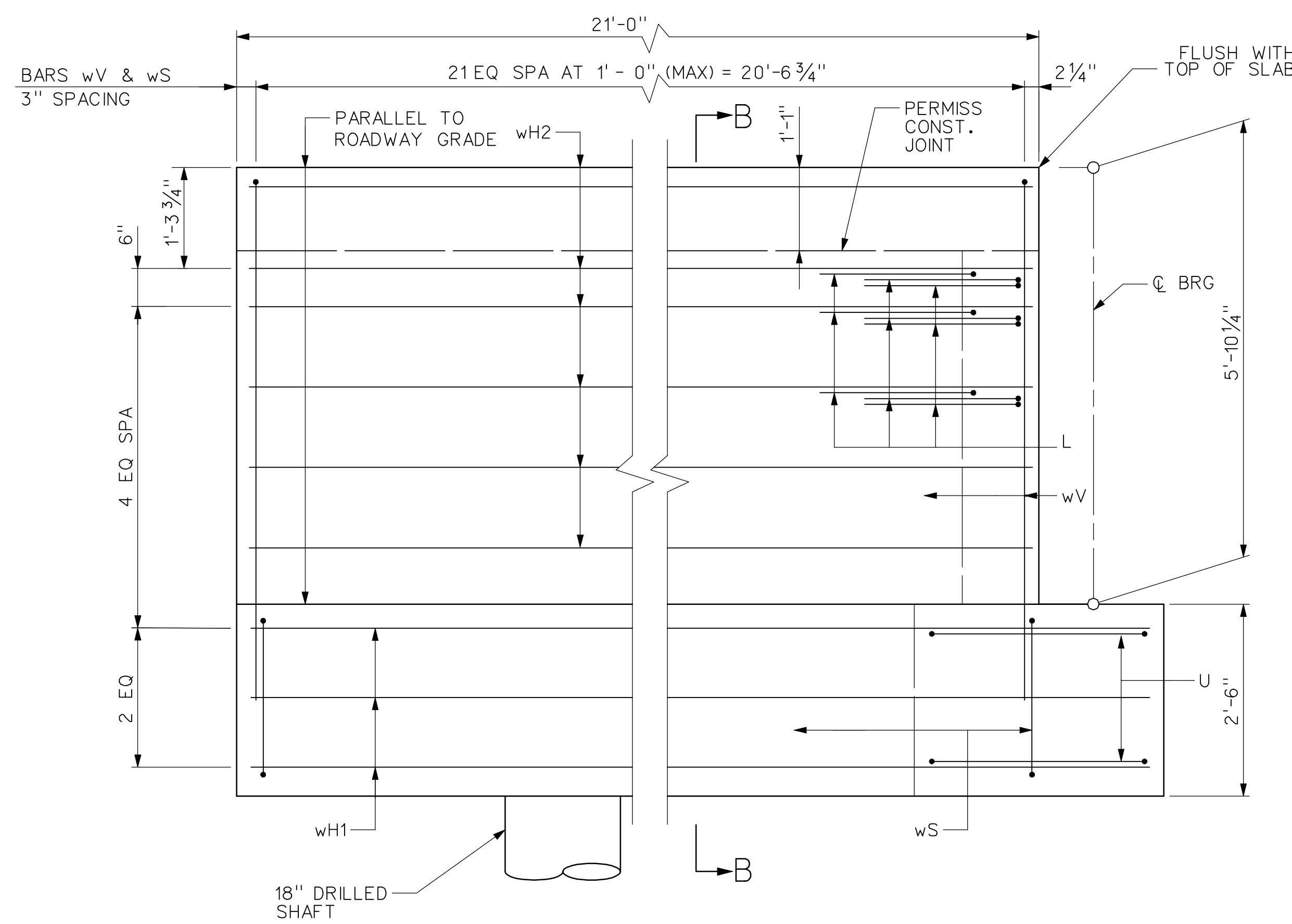
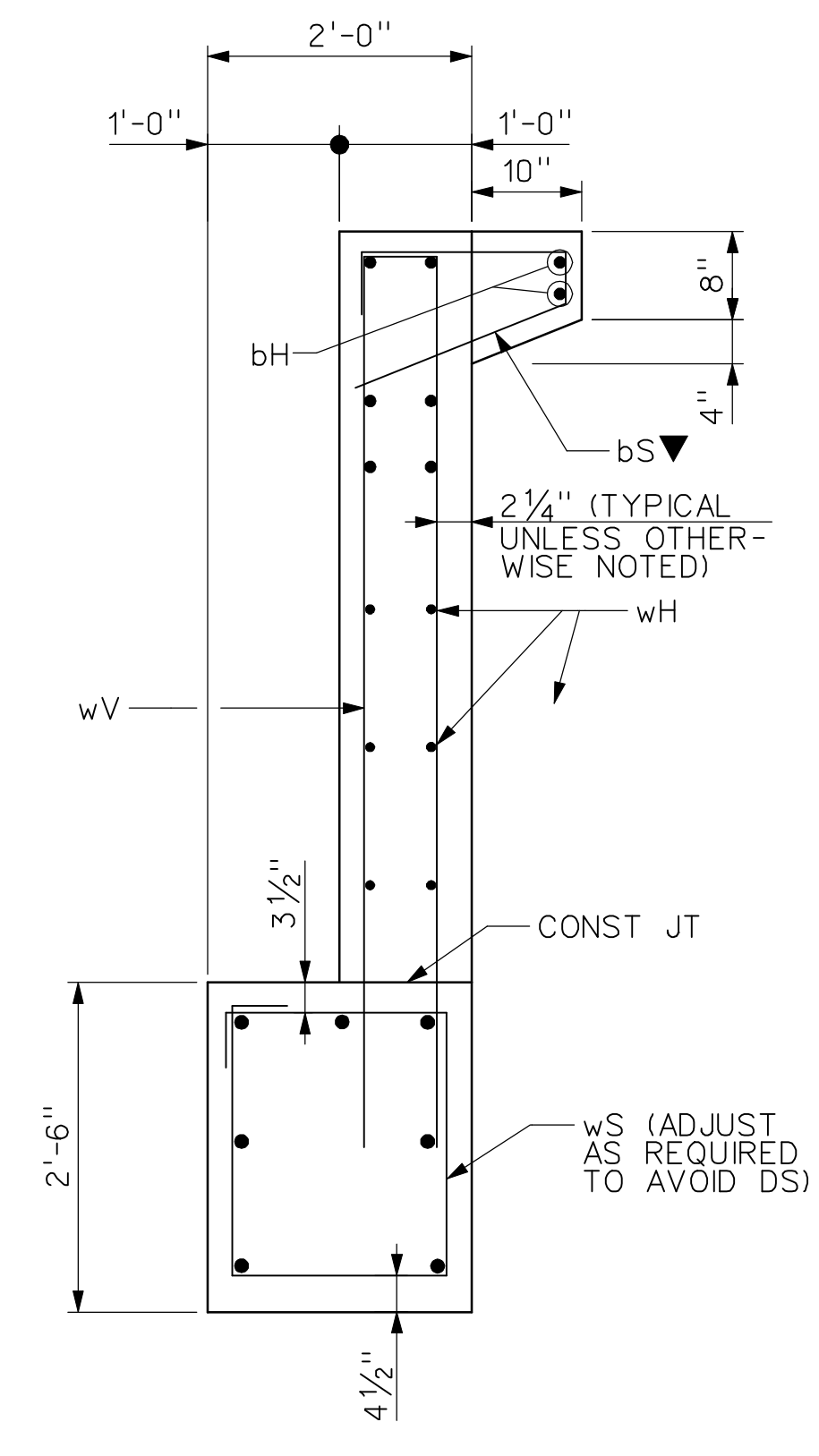


SECTION A-A

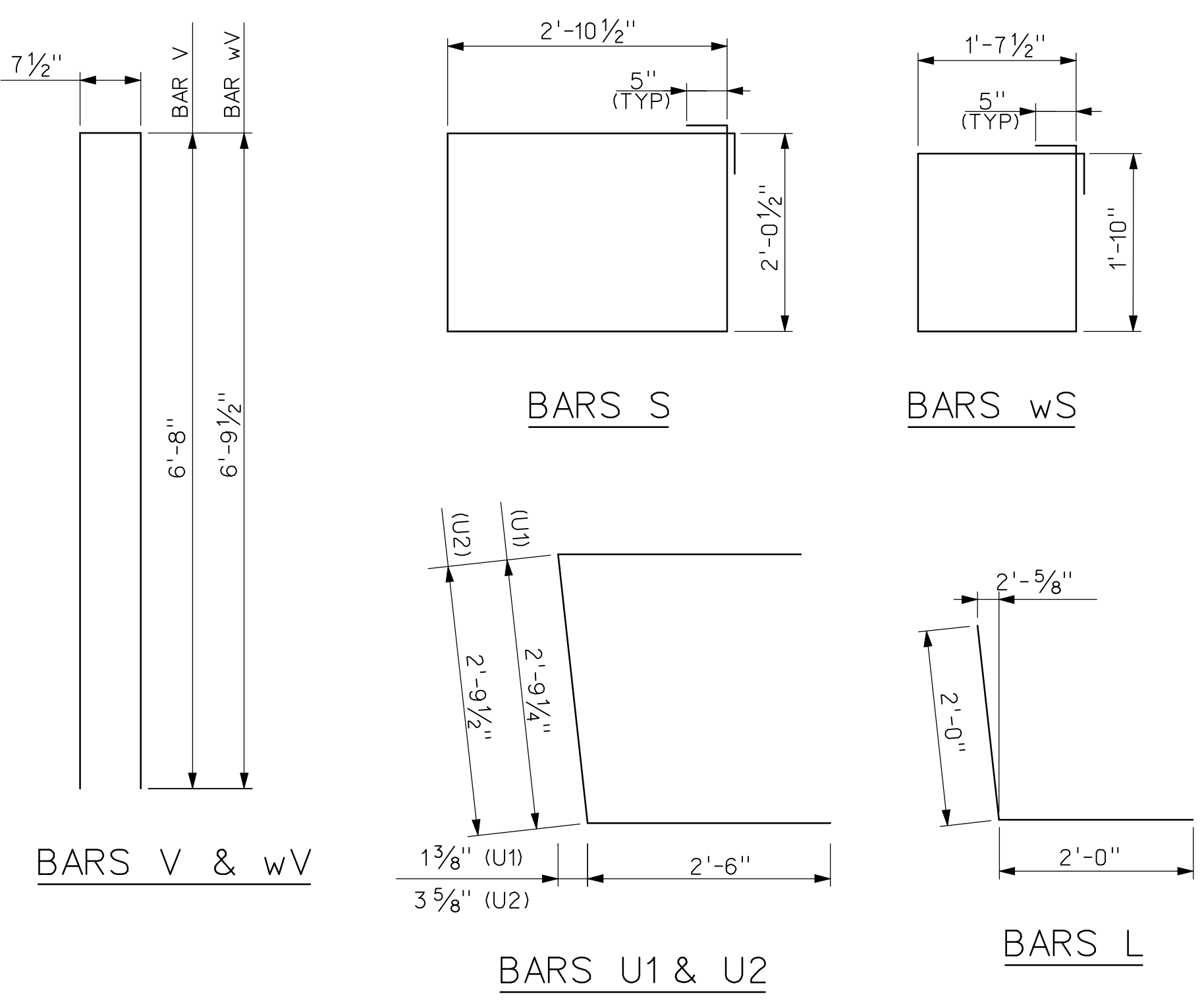


WINGWALL ELEVATION

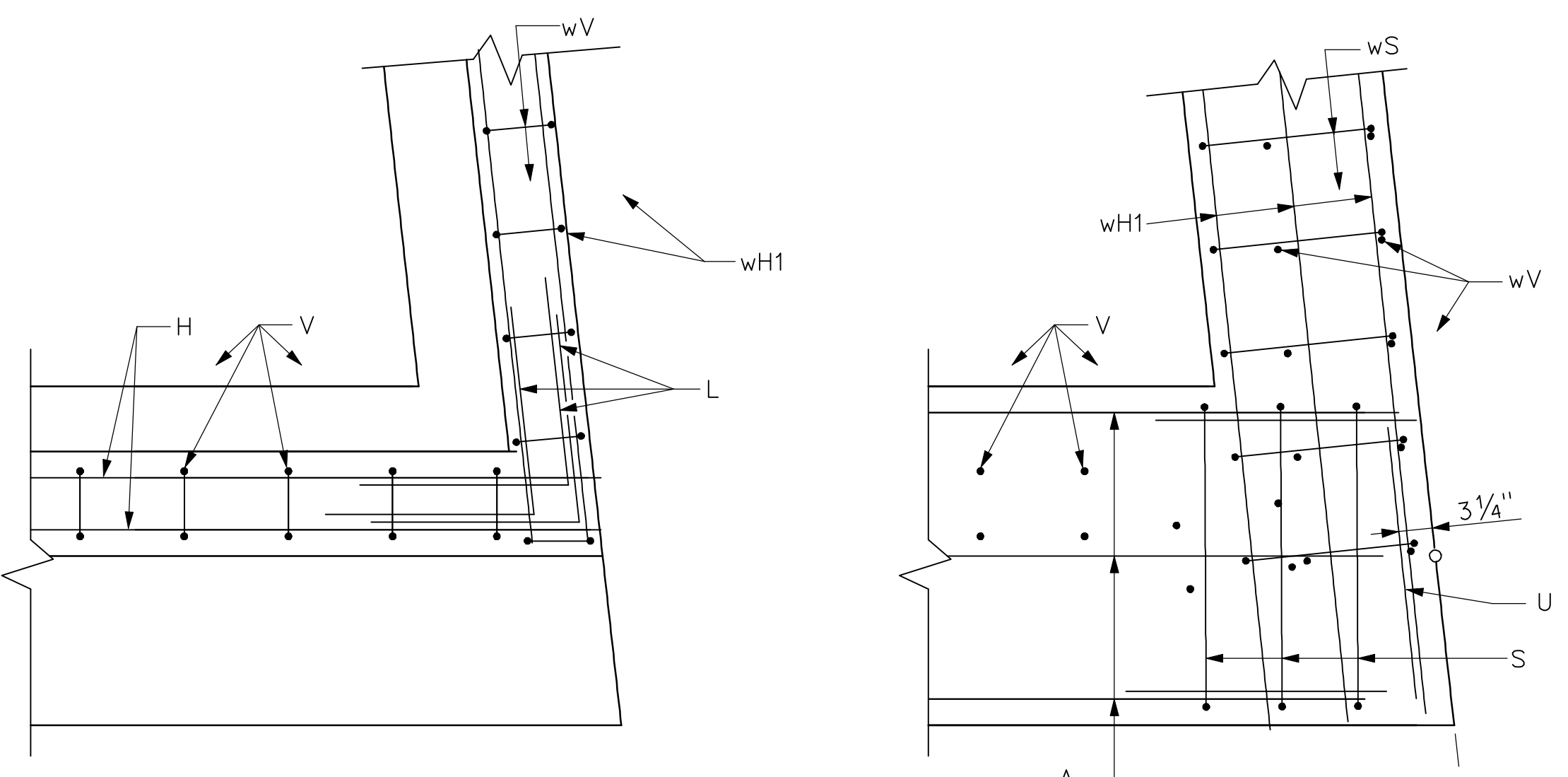


SECTION B-B

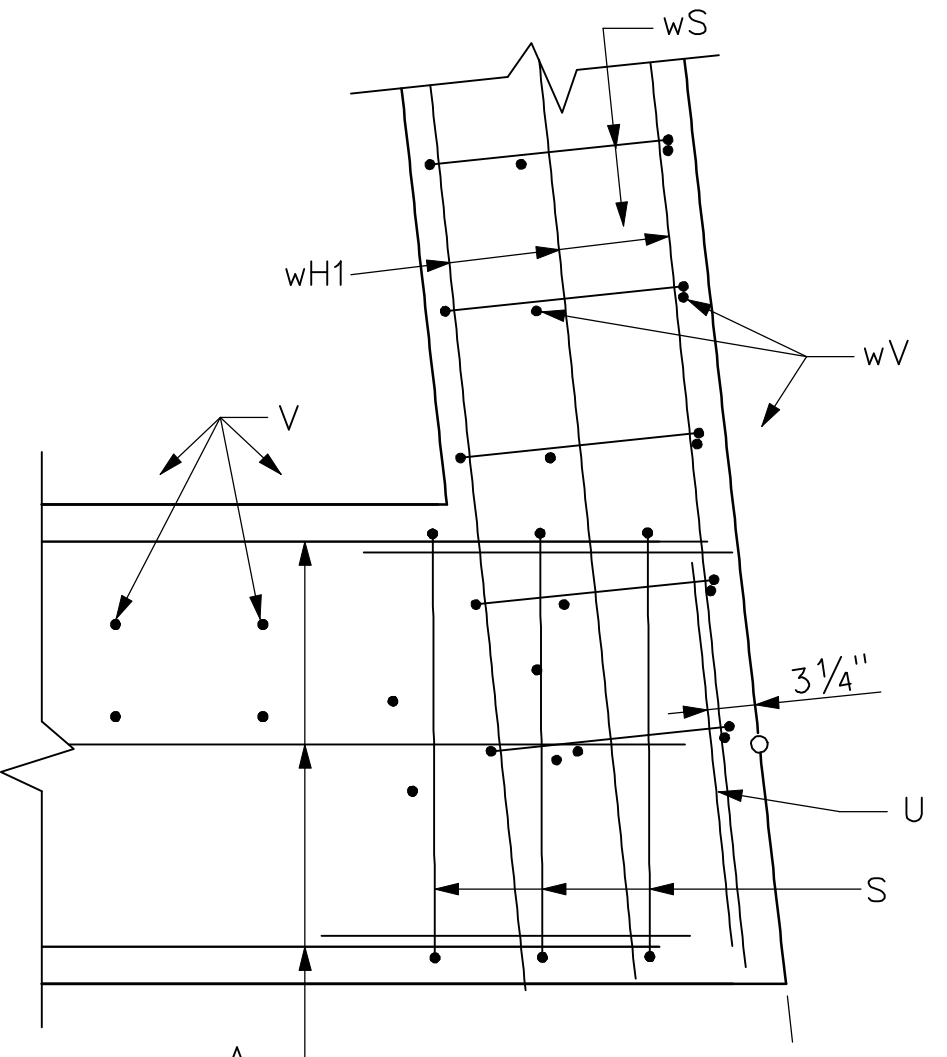
▼ PLACE BAR bS AT EA



CORNER DETAILS



BACKWALL AND WINGWALL



CAP

BILL OF REINFORCING STEEL (C)				
BAR	No	SIZE	LENGTH	WEIGHT
A	8	#11	52'-0"	2,210
H	10	#6	52'-0"	781
L	9	6	4'-0"	54
S	42	#5	10'-8"	467
U	2	#5	7'-10"	16
V	40	#5	13'-11"	581
wH	7	#6	19'-0"	200
wS	19	#5	7'-9"	154
wV	19	#5	14'-2"	281
bH	2	#4	3'-8"	5
bS	5	#4	4'-1"	14
			TOTAL	4,746

ESTIMATED QUANTITIES		
ITEM	UNIT	QUANTITY
REINFORCING STEEL	LB	4,746
CLASS C CONC (ABUT)	CY	33.7
18" DIA DRILLED SHAFT	LF	26
36" DIA DRILLED SHAFT	LF	150

(C) FOR CONTRACTOR INFORMATION ONLY
 (B) BAR SHOWN TO CL 205 BYPASS. BAR EXTENDS TO ABUT 1 OF NORTHBOUND 205 BYPASS BRIDGE AND INCLUDES 2 MECHANICAL SPLICES.

RECORD DRAWING
 This drawing is a compilation of the original sealed engineering drawing and modifications by addenda, change orders and information furnished by the contractor. Information shown that was provided by the contractor and others not associated with the design engineer cannot be verified for accuracy or completeness. Original sealed drawing is on file at the office of AECOM USA Group, Inc., TBPE REG. NO. F-3082

ORIGINAL DRAWING SEALED & SIGNED BY
 Wally R. Burns, P.E.
 TX NO. 44162

HL93 LOADING

NO.	REVISION	BY	DATE

City of Rockwall, Texas

205 BYPASS PHASE 4

SOUTHBOUND 205 BYPASS BRIDGE OVER PHELPS CREEK ABUTMENT 1 DETAILS

TCB AECOM

TCB INC. WWW.TCB.AECOM.COM 17300 DALLAS PARKWAY, SUITE 1010 DALLAS, TEXAS 75248

Unit	PW-DAL-FW	Scale	NOT TO SCALE	Date	11/23/2009
Designed	SDH	Checked	TCB	Project No.	60004153
Drawn	TCB	Approved	TCB	Sheet	109 of 146

P:\328 60004153-205bypass\cadd\sheets\phase 4-120-00 to 141+00\record drawing 10_7_09\109_205BP-BR-SB-K001b.dgn
 11/23/2009