

HORIZONTAL CURVE DATA

205_S2A-6

© 205 BYPASS

PI STA. 136+41.05

$\Delta = 25^\circ 14' 50.15''$ (RT)

$D = 3^\circ 38' 16.18''$

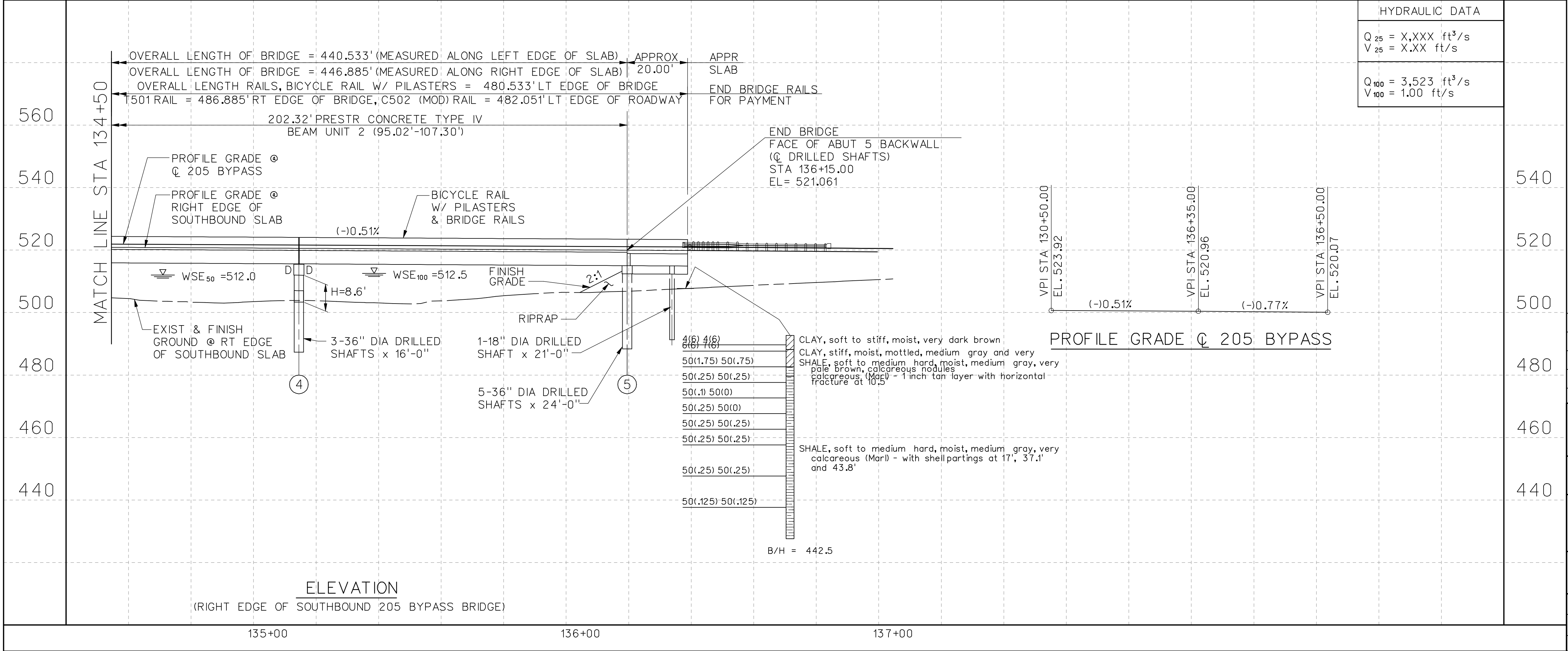
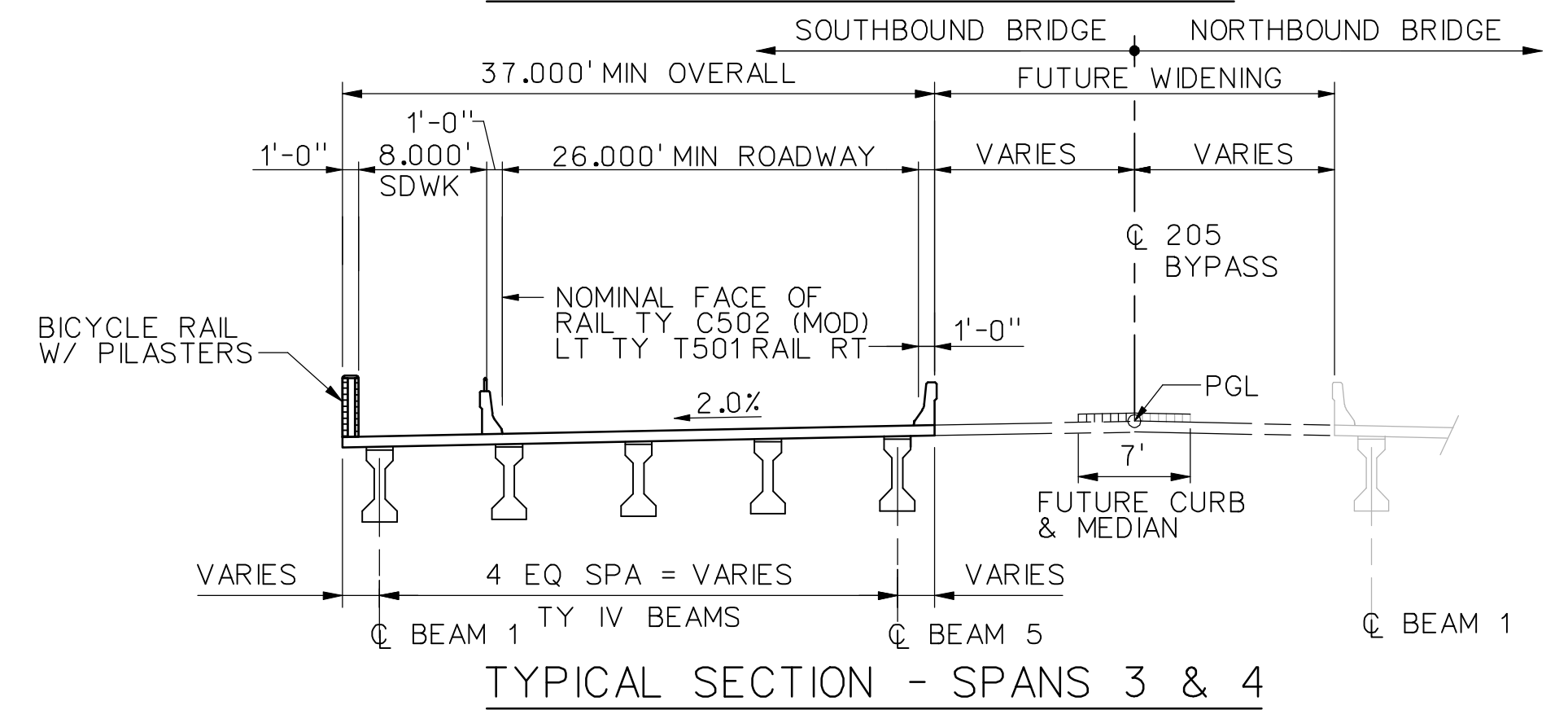
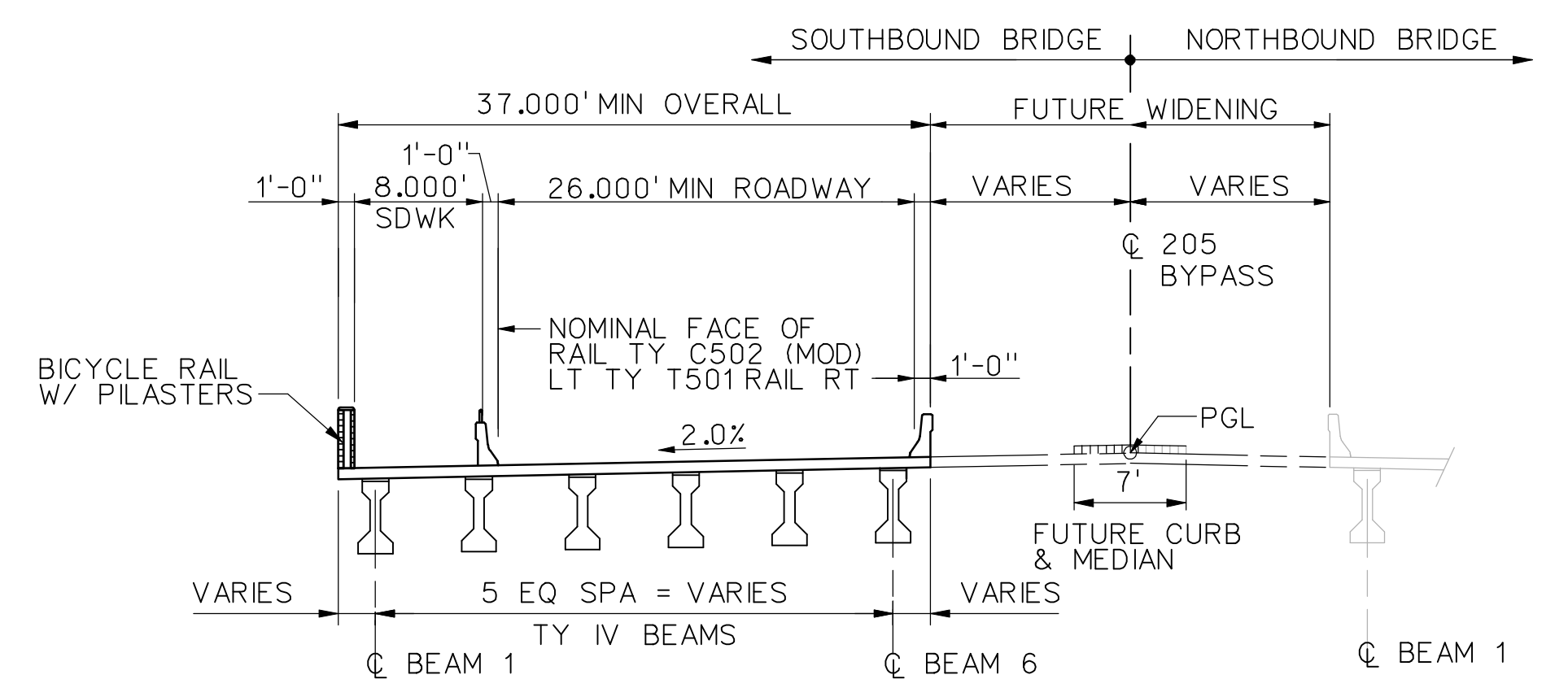
$T = 352.74'$

$L = 694.02'$

$R = 1,575.00'$

PC STA. 132+88.31

PT STA. 139+82.33



RECORD DRAWING

This drawing is a compilation of the original sealed engineering drawing and modifications by addenda, change orders and information furnished by the contractor. Information shown that was provided by the contractor and others not associated with the design engineer cannot be verified for accuracy or completeness. Original sealed drawing is on file at the office of AECOM USA Group, Inc., TBPE REG. NO. F-3082

ORIGINAL DRAWING SEALED & SIGNED BY

Wally R. Burns, P.E.

TX NO. 44162

City of Rockwall, Texas

205 BYPASS PHASE 4

SOUTHBOUND 205 BYPASS BRIDGE OVER PHELPS CREEK BRIDGE LAYOUT

2 OF 2

Unit	PW-DAL-FW	Scale	Horz: AS SHOWN	Date	11/23/2009
Designed	SDH	Checked	Vert: AS SHOWN	Project No.	60004153
Drawn		Approved		Sheet	106 of 146

P:\328\60004153-205bypass\cadd\sheet\phase 4-120-00 to 141+00\record drawing 10_7_09\106_205BP-BR-SB-Bl02.dgn 11/23/2009