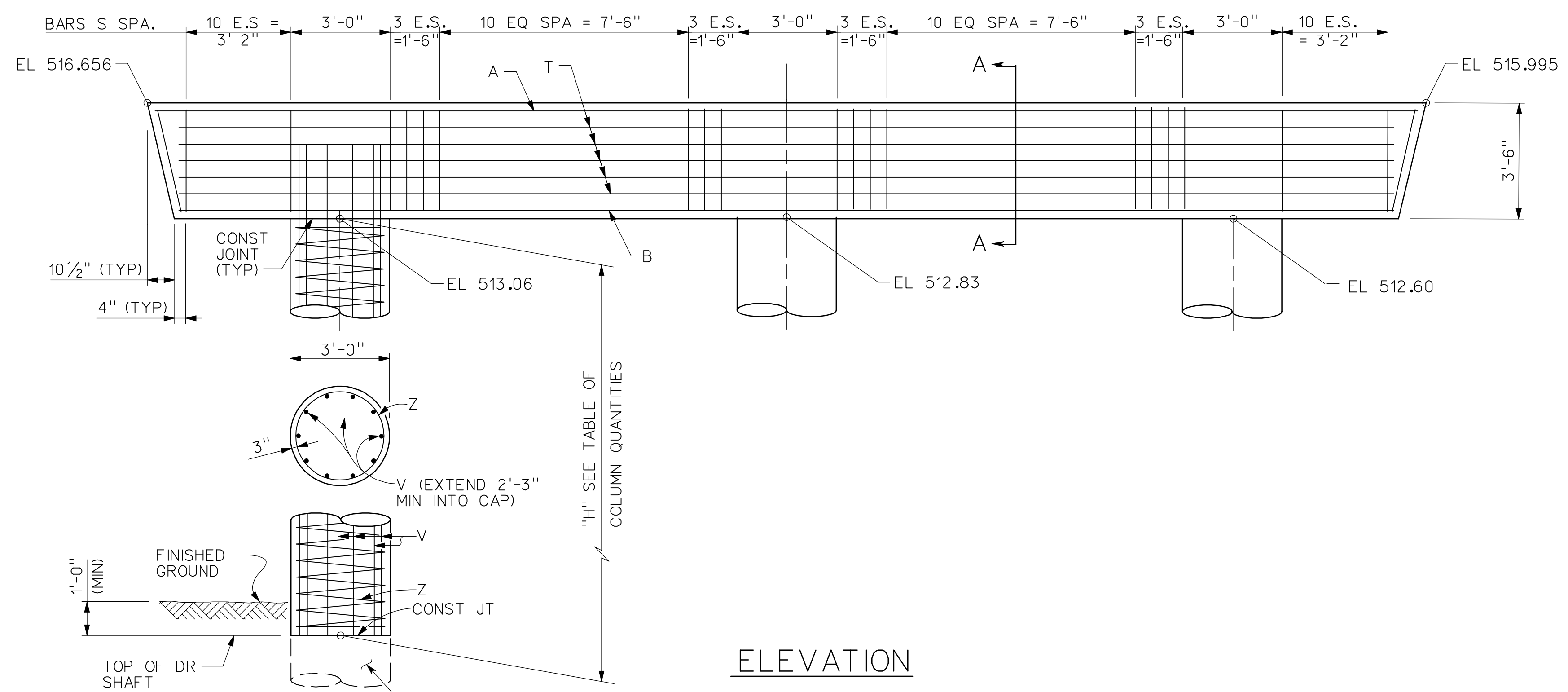
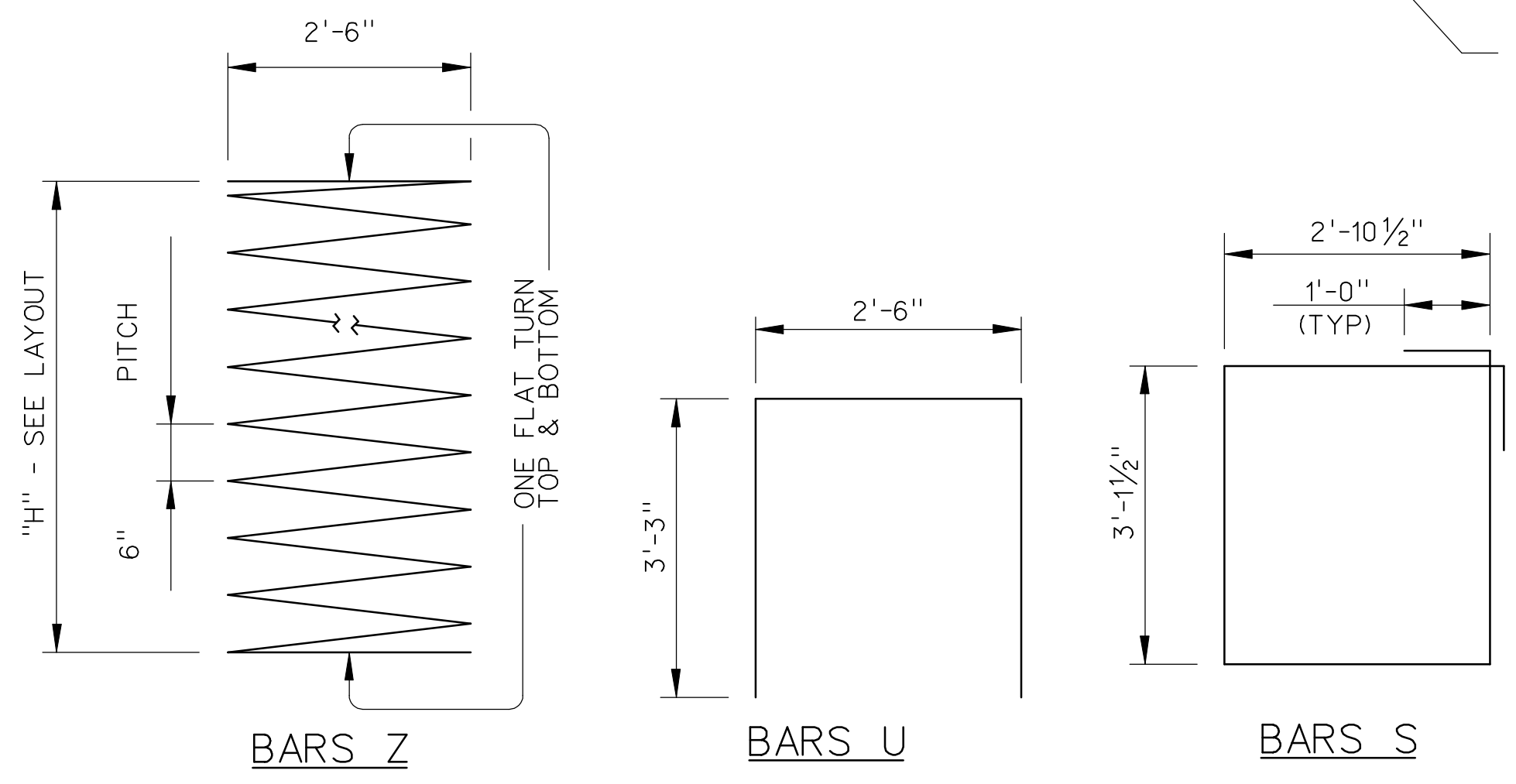


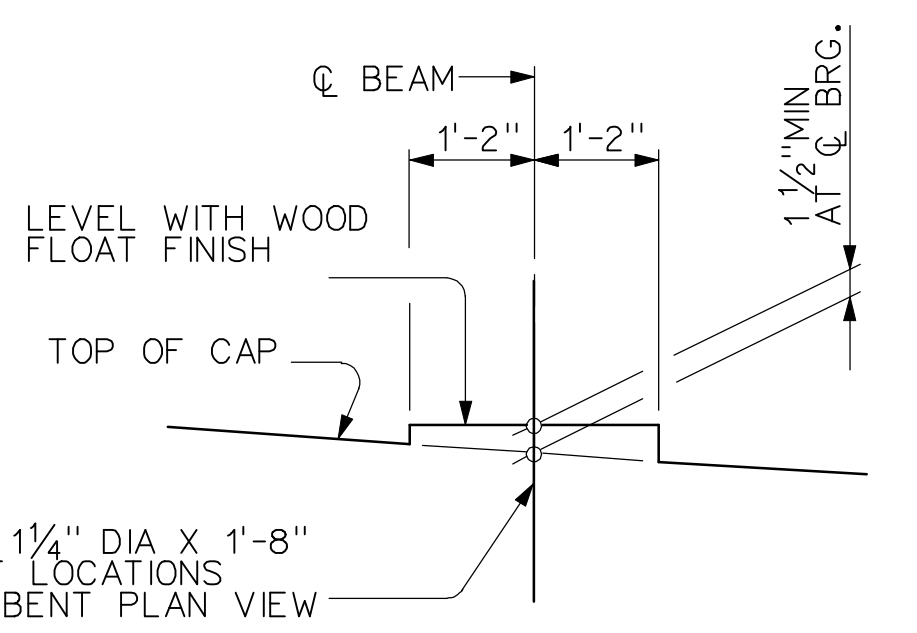
PLAN



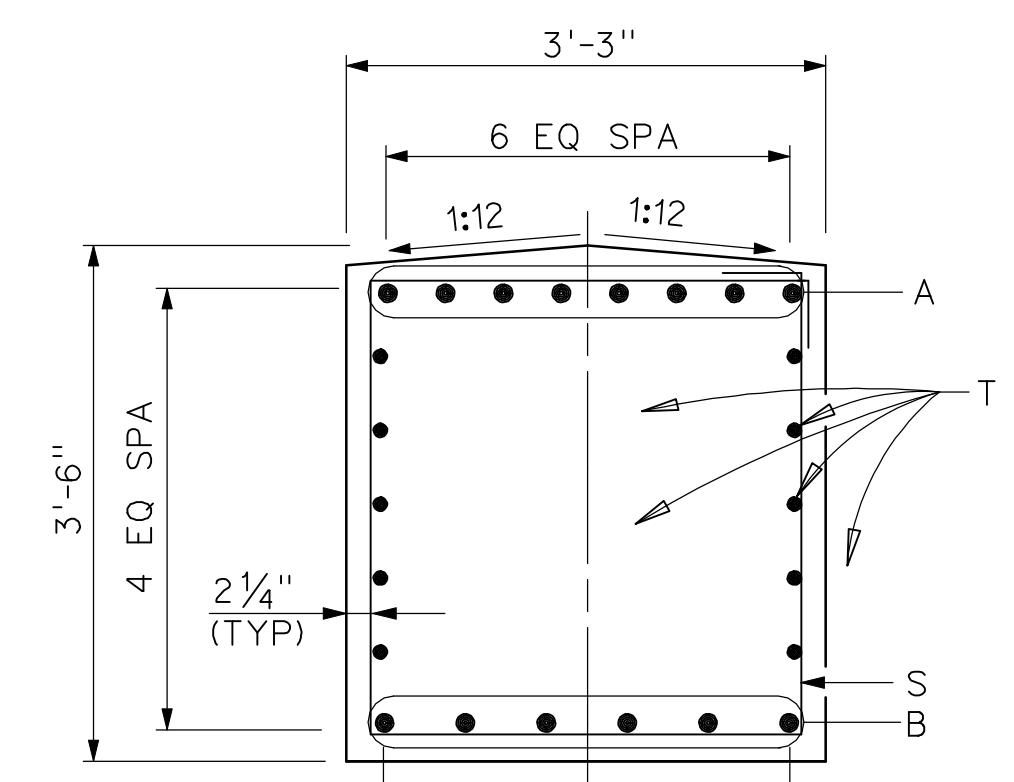
ELEVATION



BAR BEND DIAGRAMS



BEARING SEAT DETAIL
(BEARING SURFACE SHALL BE CLEAN AND FREE OF ALL LOOSE MATERIAL BEFORE PLACING BEARING PAD.)



SECTION A-A
EVENLY SPACE ALL REINF STEEL

BILL OF REINFORCING STEEL @				
BAR	No	SIZE	LENGTH	WEIGHT
A	8	#11	38'-2"	1,622
B	6	#11	36'-2"	1,153
D	4	1 1/4" D	1'-8"	28
S	52	#6	14'-0"	1,093
T	10	#5	36'-2"	377
U	2	#5	9'-5"	20
V	30	#9	6'-3"	638
Z	3	#3	80'-0"	90
TOTAL				5,021

ESTIMATED QUANTITIES		
ITEM	UNIT	QUANTITY
REINFORCING STEEL	LB	5,021
CLASS C CONC (CAP)	CY	16.1
CLASS C CONC (COL)	CY	3.1

@ FOR CONTRACTOR INFORMATION ONLY

- NOTES:
- DESIGNED IN ACCORDANCE TO AASHTO LRFD SPECIFICATIONS.
 - ALL CONCRETE SHALL BE CLASS "C" WITH MINIMUM COMPRESSIVE STRENGTH $f'_c = 3600$ PSI.
 - CHAMFER ALL EXPOSED CORNERS 3/4" UNLESS OTHERWISE SHOWN FOR NOTED.
 - ALL REINFORCING STEEL SHALL BE ASTM A-615, GRADE 60.
 - ALL REINFORCING STEEL SHALL HAVE 2" CLEAR COVER UNLESS OTHERWISE SHOWN OR NOTED.
 - MAXIMUM CALCULATED 36" DIA DRILLED SHAFT LOAD = 335 TONS/SHAFT

RECORD DRAWING
This drawing is a compilation of the original sealed engineering drawing and modifications by addenda, change orders and information furnished by the contractor. Information shown that was provided by the contractor and others not associated with the design engineer cannot be verified for accuracy or completeness. Original sealed drawing is on file at the office of AECOM USA Group, Inc., TBPE REG. NO. F-3082

ORIGINAL DRAWING SEALED & SIGNED BY
Wally R. Burns, P.E.
TX NO. 44162

HL 93 LOADING

NO.	REVISION	BY	DATE

City of Rockwall, Texas

205 BYPASS PHASE 4

NORTHBOUND 205 BYPASS BRIDGE OVER PHELPS CREEK

INTERIOR BENT 2 PLAN AND ELEVATION | OF |

TCB AECOM
TCB INC. WWW.TCB.AECOM.COM
17300 DALLAS PARKWAY, SUITE 1010
DALLAS, TEXAS 75248

Unit	PW-DAL-FW	Scale	3/8" = 1'-0"	Date	11/23/2009
Designed	SDH	Checked	TCB	Project No.	60004153
Drawn	SDH	Approved	TCB	Sheet	96 of 146

P:\328\60004153-205bypass\cadd\sheet\phase 4-120-00 to 141+00\record drawing 10_7_09\096_205BP-BR-NB-K002.dgn
11/23/2009