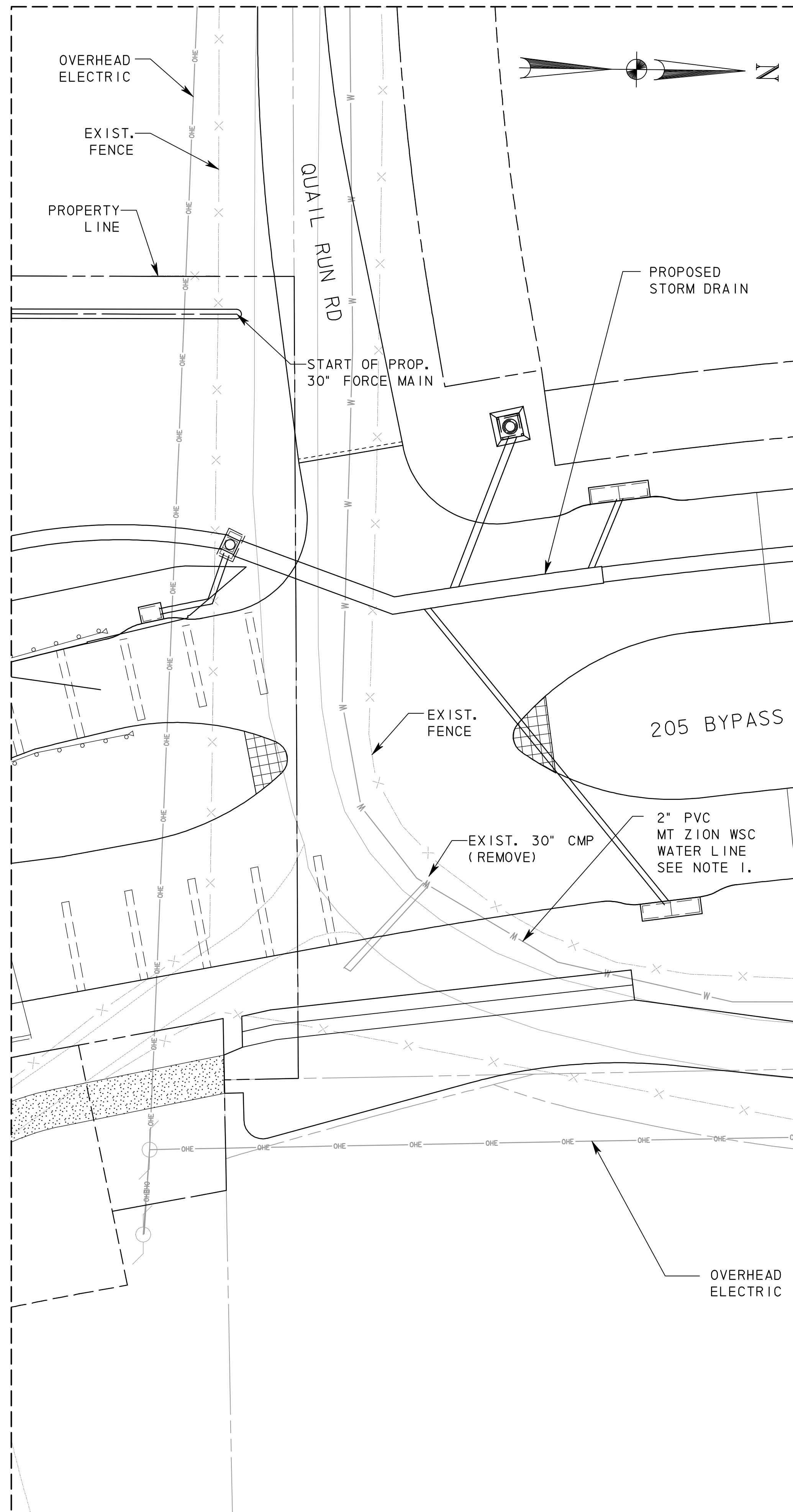
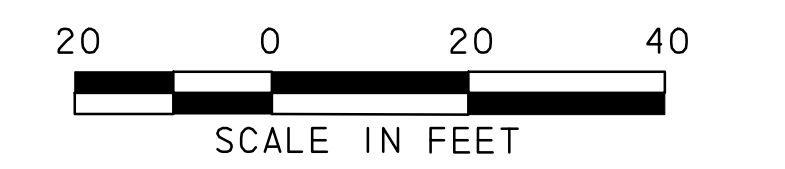


P:\4328\60004153-205bypass\cadd\sheets\phase 4-120+00 to 141+00\record drawing 10_7_09\035E\1st\ing\U11s02.dgn
11/23/2009



ENLARGED PLAN D

UNDERGROUND UTILITIES
THE LOCATION OF EXISTING UTILITIES SHOWN ON THESE PLANS ARE APPROXIMATE AND BASED UPON DATA FURNISHED BY THE CITY OF ROCKWALL AND OTHER UTILITY OWNERS. IT IS THE RESPONSIBILITY OF THE CONTRACTOR TO LOCATE AND VERIFY ON-SITE THE UTILITIES THAT MAY CONFLICT WITH THE CONSTRUCTION.



LEGEND

- PROPOSED ROW
- ===== PROPOSED STORM DRAIN
- DRAINAGE EASEMENT
- TEMP. CONST. EASEMENT

- NOTE:**
1. COORDINATE WITH MT. ZION WATER SUPPLY FOR POSSIBLE RELOCATION OF WATER LINE AND RELOCATION OF WATER METER.

RECORD DRAWING
This drawing is a compilation of the original sealed engineering drawing and modifications by addenda, change orders and information furnished by the contractor. Information shown that was provided by the contractor and others not associated with the design engineer cannot be verified for accuracy or completeness. Original sealed drawing is on file at the office of AECOM USA Group, Inc., TBPE REG. NO. F-3082

ORIGINAL DRAWING SEALED & SIGNED BY
T.H. Gaertner, P.E.
TX NO. 37124

NO.	REVISION	BY	DATE
205 BYPASS PHASE 4			
UTILITIES LAYOUT			
2 OF 2			
		<small>TCB INC. WWW.TCB.AECOM.COM 17300 DALLAS PARKWAY, SUITE 1010 DALLAS, TEXAS 75248</small>	
Unit	PW-DAL-FW	Scales	Horz: AS SHOWN Vert: AS SHOWN
Designed	SDB	Checked	TCB
Drawn	FG	Approved	TCB
Date	11/23/2009		Project No. 60004153
Sheet 35		of 146	