

SCALE IN FEET
HORIZONTAL



SCALE IN FEET
VERTICAL

LEGEND

- RIGHT-OF-WAY
- DRAINAGE EASEMENT
- TEMP. CONSTRUCTION EASEMENT
- 205 BYPASS PAVING

UNDERGROUND UTILITIES

THE LOCATION OF EXISTING UTILITIES SHOWN ON THESE PLANS ARE APPROXIMATE AND BASED ON DATA FURNISHED BY THE CITY OF ROCKWALL. IT IS THE RESPONSIBILITY OF THE CONTRACTOR TO LOCATE AND VERIFY ON-SITE THE UTILITIES THAT MAY CONFLICT WITH THE CONSTRUCTION.

NOTES:

1. PROVIDE HORIZONTAL CURVE BY JOINT DEFLECTION ONLY. PIPE FLEXURE WILL NOT BE PERMITTED. MAXIMUM ALLOWABLE JOINT DEFLECTION SHALL BE THE LESSER OF THE FOLLOWING:
 - A) 0.8 DEGREES, OR
 - B) 80% OF THE ASTM/TCEQ/MANUFACTURER'S RECOMMENDED MAXIMUM JOINT DEFLECTION

RECORD DRAWING

This drawing is a compilation of the original sealed engineering drawing and modifications by addenda, change orders and information furnished by the contractor. Information shown that was provided by the contractor and others not associated with the design engineer cannot be verified for accuracy or completeness. Original sealed drawing is on file at the office of AECOM USA Group, Inc., TBPE REG. NO. F-3082

ORIGINAL DRAWING SEALED & SIGNED BY

Nicholas R. Batker, P.E.
TX NO. 92749

NO.	REVISION	BY	DATE



City of Rockwall, Texas

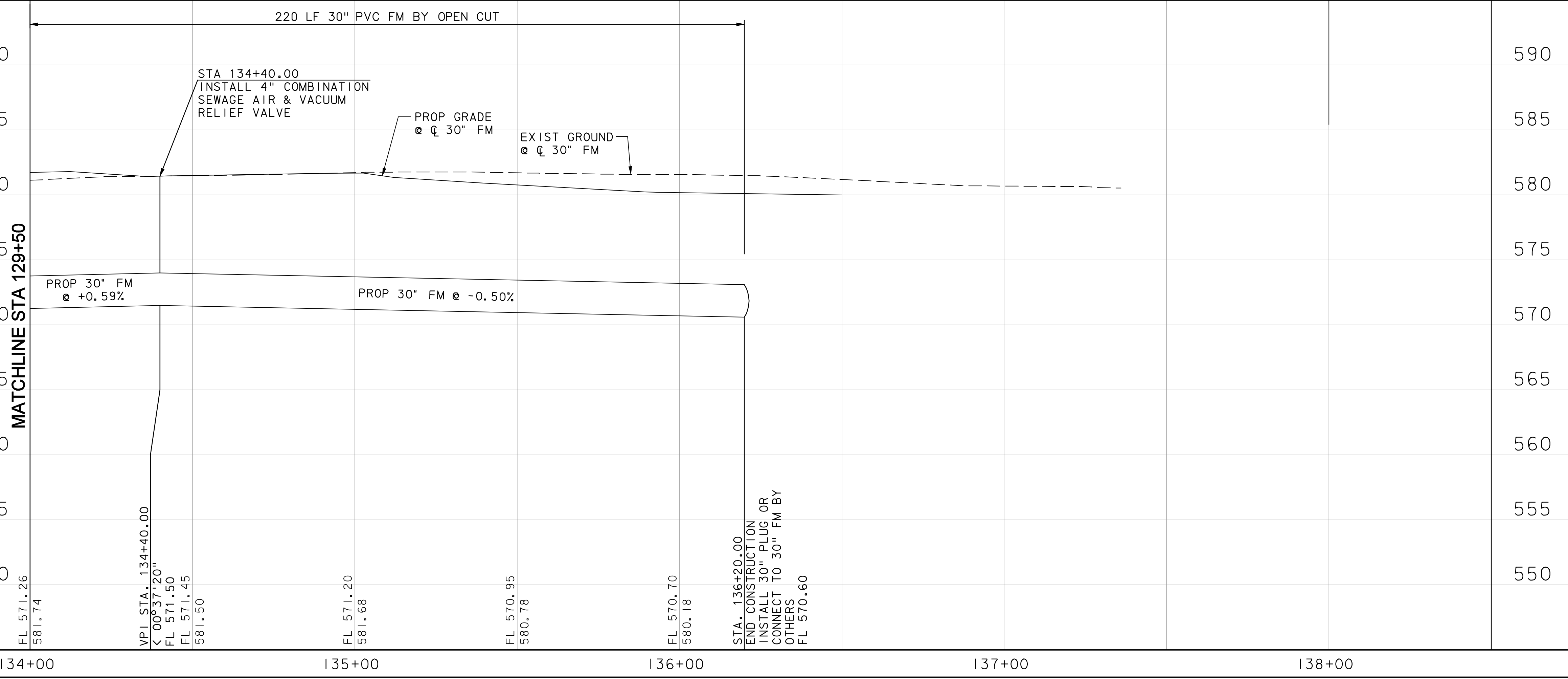
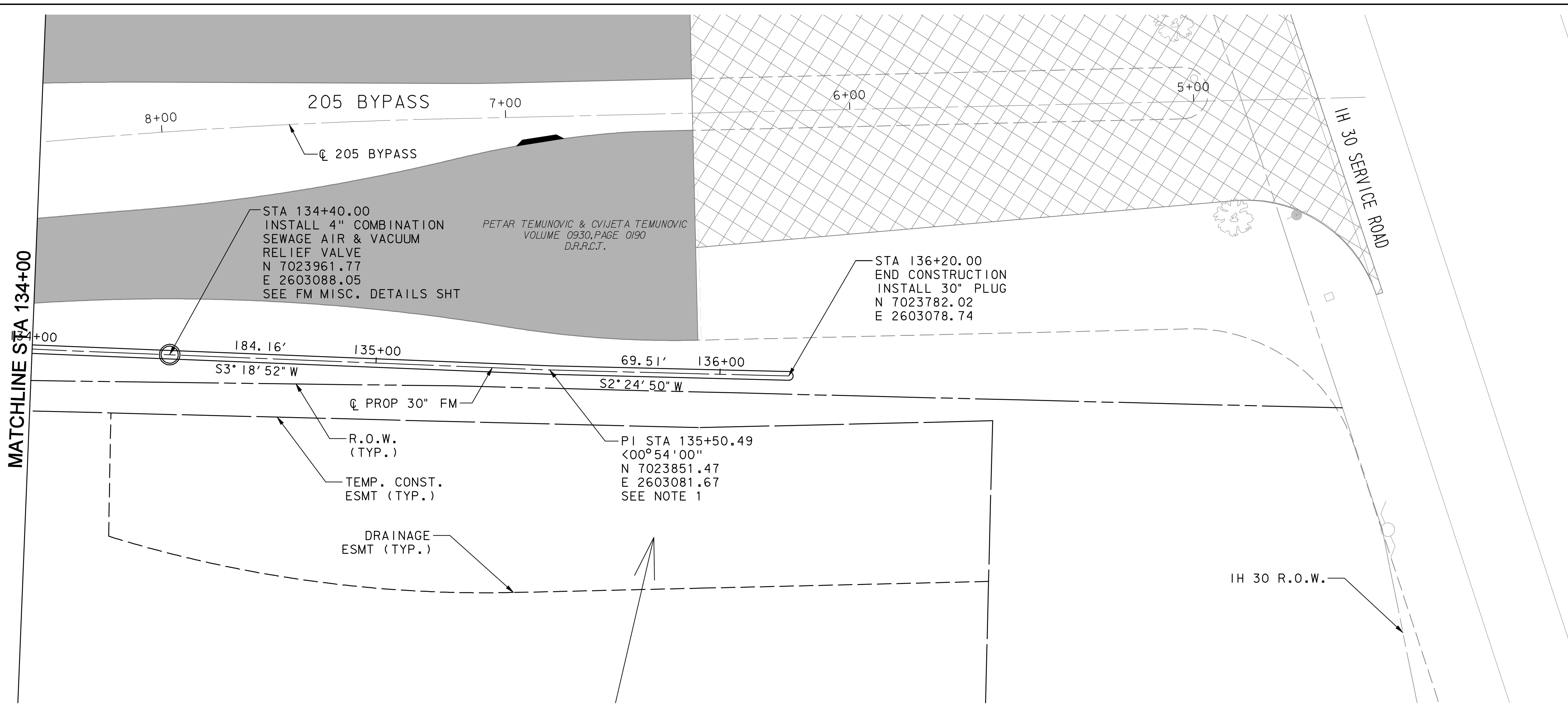
**205 BYPASS
PHASE 3**

**30" FORCE MAIN
PLAN & PROFILE
STA 134+00 TO END**

18 OF 18

TCB | AECOM
TCB INC. WWW.TCB.AECOM.COM
17300 DALLAS PARKWAY, SUITE 1010
DALLAS, TEXAS 75248

Unit	PW-DAL-FW	Scale	Horz: 1:40 Vert: 1:10	Date	11/23/2009
Designed	JLT/SDB	Checked	NRB	Project No.	60023784
Drawn	TCB	Approved	NRB	Sheet	146 of 215



11/23/2009 3:31:33 PM \\ussdel1\p001\pww4328\60004153-205Bypass\CAD\Drawings\Phase 3 - 1 30 to Station SH 66\Record Drawing 10-7-09\146R&P18.dgn