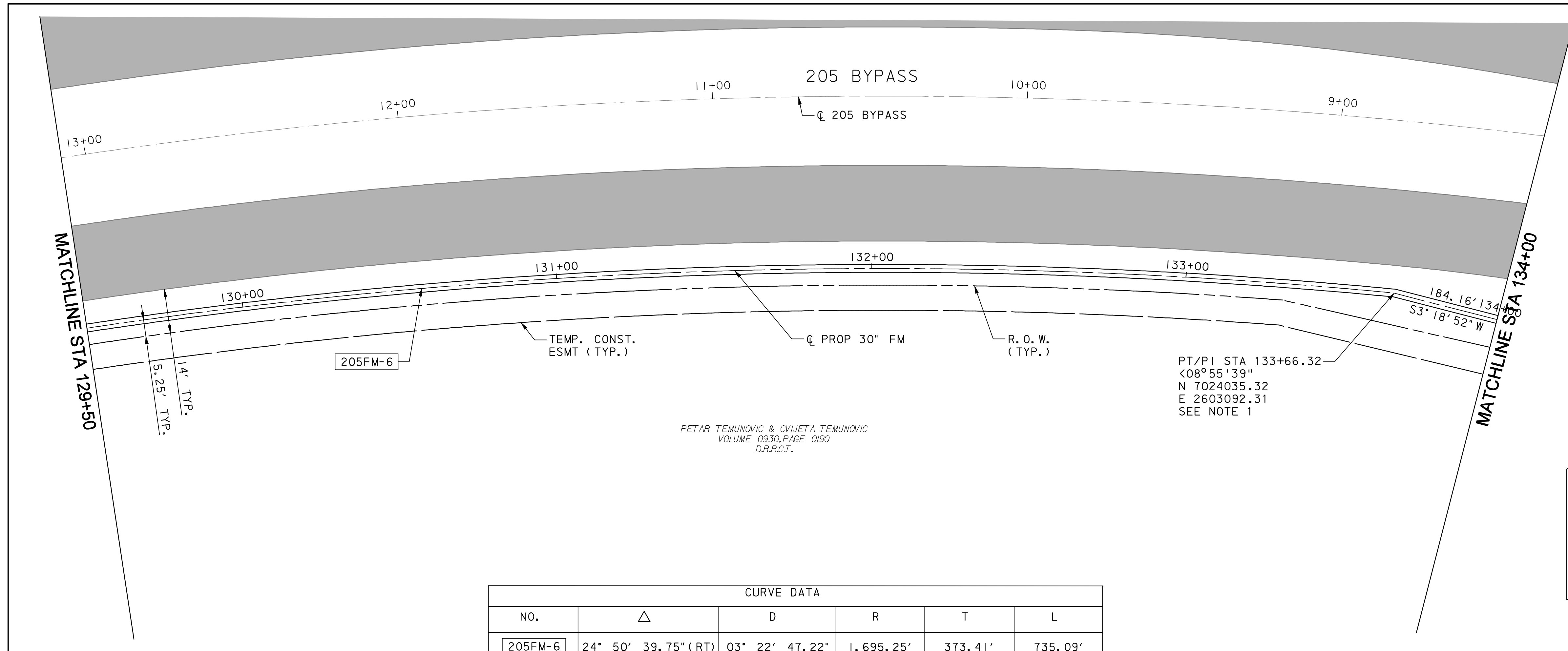


**LEGEND**

- RIGHT-OF-WAY
- DRAINAGE EASEMENT
- TEMP. CONSTRUCTION EASEMENT
- 205 BYPASS PAVING

**UNDERGROUND UTILITIES**

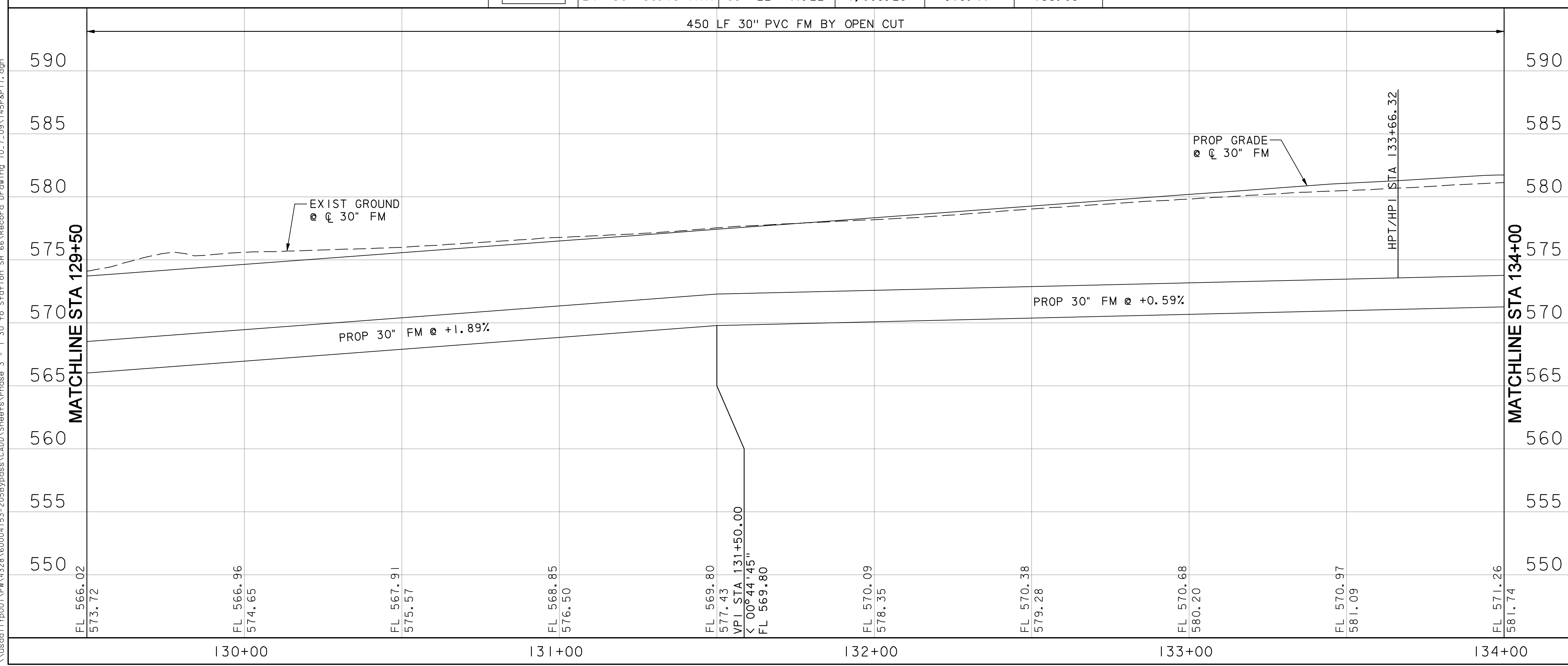
THE LOCATION OF EXISTING UTILITIES SHOWN ON THESE PLANS ARE APPROXIMATE AND BASED ON DATA FURNISHED BY THE CITY OF ROCKWALL. IT IS THE RESPONSIBILITY OF THE CONTRACTOR TO LOCATE AND VERIFY ON-SITE THE UTILITIES THAT MAY CONFLICT WITH THE CONSTRUCTION.



PETAR TEMUNOVIC & CVIJETA TEMUNOVIC  
VOLUME 0930, PAGE 0190  
D.R.R.C.T.

PT/PI STA 133+66.32  
<math>08^{\circ}55'39''</math>  
N 7024035.32  
E 2603092.31  
SEE NOTE 1

CURVE DATA					
NO.	$\Delta$	D	R	T	L
205FM-6	24° 50' 39.75" (RT)	03° 22' 47.22"	1,695.25'	373.41'	735.09'



- NOTES:**
- PROVIDE HORIZONTAL CURVE BY JOINT DEFLECTION ONLY. PIPE FLEXURE WILL NOT BE PERMITTED. MAXIMUM ALLOWABLE JOINT DEFLECTION SHALL BE THE LESSER OF THE FOLLOWING:
    - A) 0.8 DEGREES, OR
    - B) 80% OF THE ASTM/TCEQ/MANUFACTURER'S

**RECORD DRAWING**

This drawing is a compilation of the original sealed engineering drawing and modifications by addenda, change orders and information furnished by the contractor. Information shown that was provided by the contractor and others not associated with the design engineer cannot be verified for accuracy or completeness. Original sealed drawing is on file at the office of AECOM USA Group, Inc., TBPE REG. NO. F-3082

**ORIGINAL DRAWING SEALED & SIGNED BY**  
Nicholas R. Batker, P.E.  
TX NO. 92749

NO.	REVISION	BY	DATE

**City of Rockwall, Texas**  
**205 BYPASS PHASE 3**  
**30" FORCE MAIN PLAN & PROFILE**  
**STA 129+50 TO 134+00**
17 OF 18

Unit	PW-DAL-FW	Scale	Horz: 1"=40' Vert: 1"=10'	Date	11/23/2009
Designed	JLT/SDB	Checked	NRB	Project No.	60023784
Drawn	TCB	Approved	NRB	Sheet	145 of 215

11/23/2009 3:31:20 PM \\usdell\p001\pww\4328\60004153-205Bypass\CAD\Drawings\Phase 3 - 130 to Station SH 66\Record Drawing 10-7-09\145P&P17.dgn