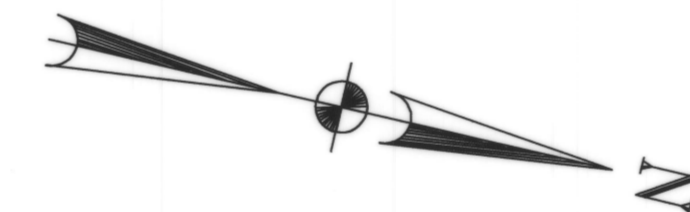
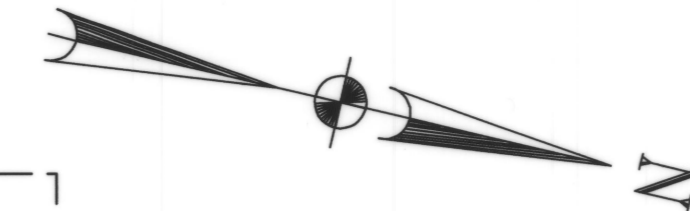
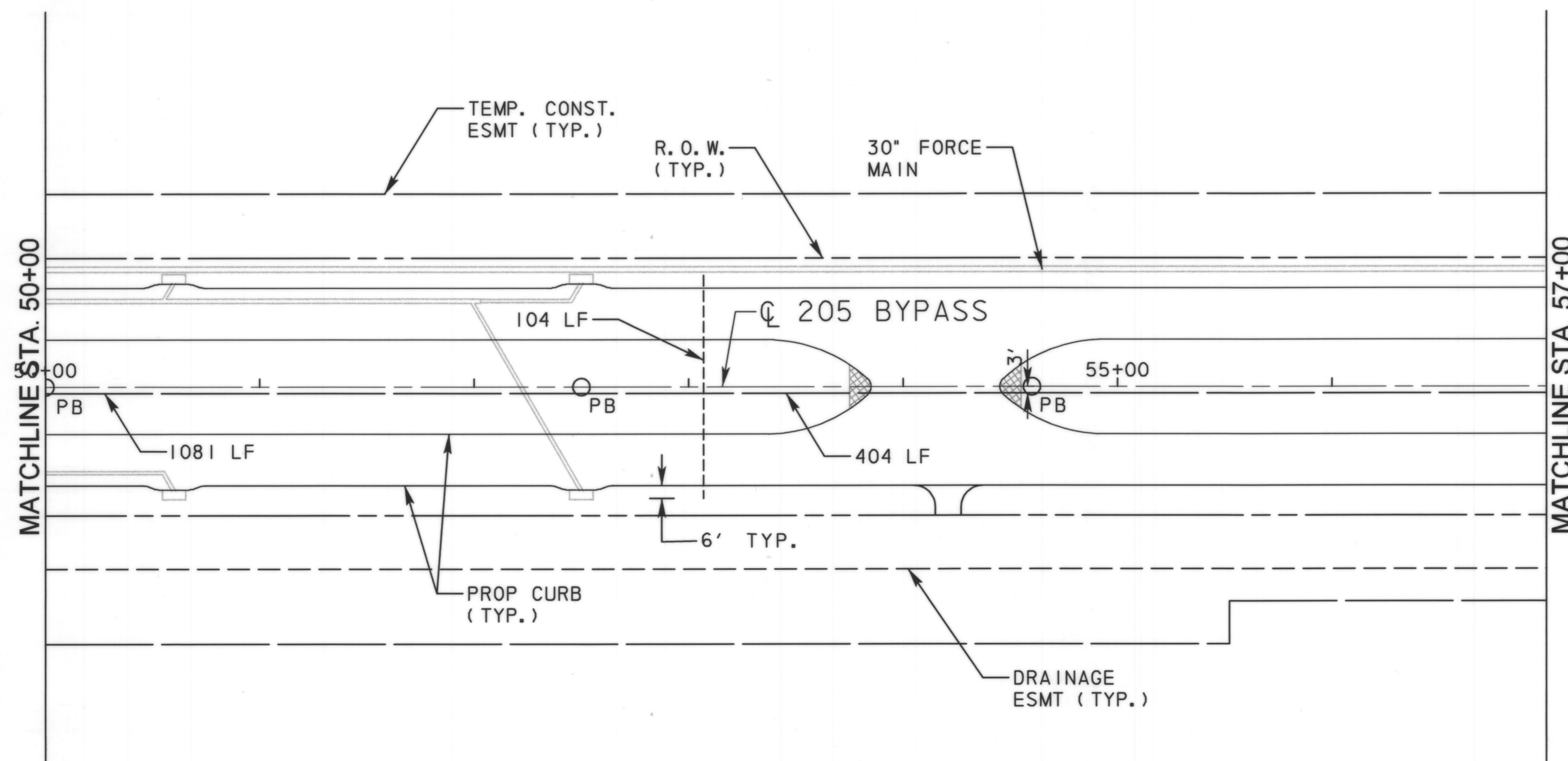
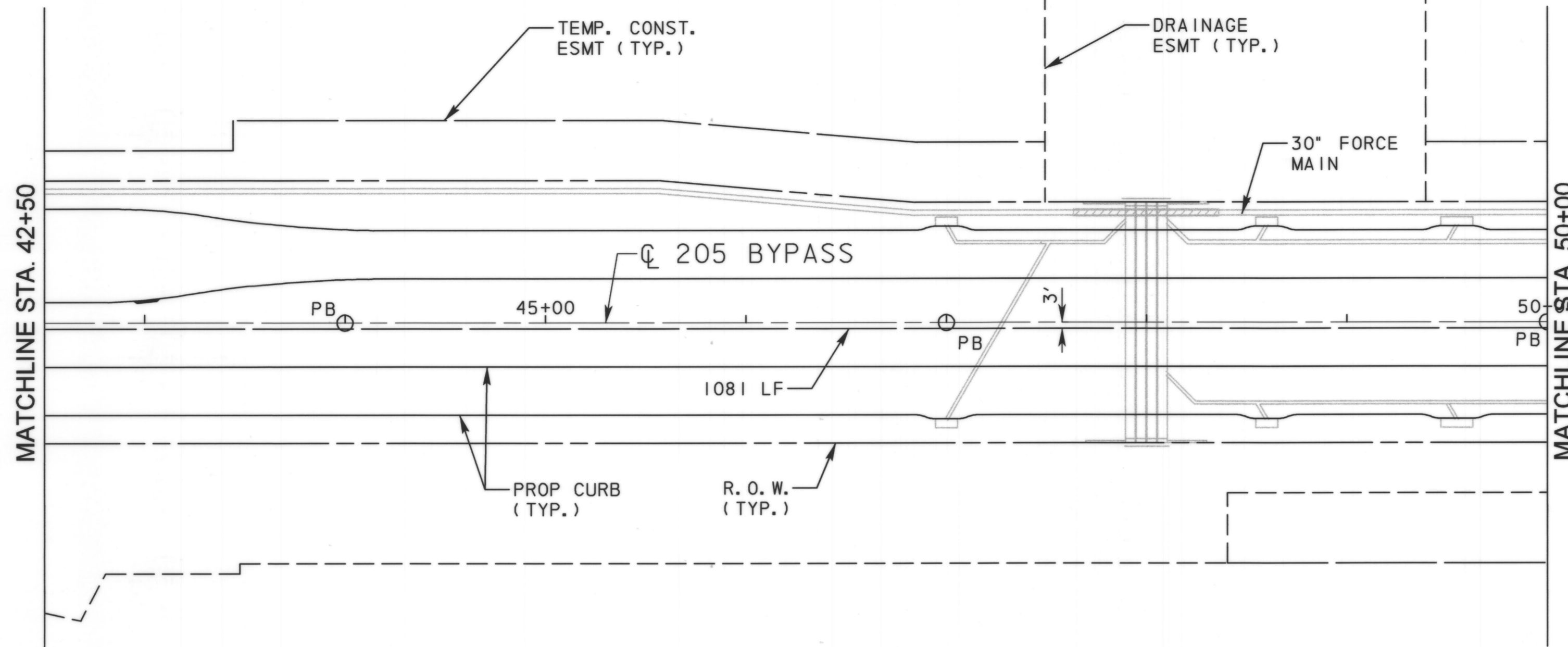


\\usdal1\p001\PM\4328\60004\53-205Bypass\CADD\Sheets\Phase 3 - 1 30 to Station SH 66\Record Drawing 10_7_09\121rr19-11lum-03.dgn
11/16/2009



- NOTES:
- ALL CONDUIT FOR ILLUMINATION ASSEMBLIES SHALL BE PLACED 3-FT FROM 205 BYPASS CENTERLINE.
 - CONDUIT INSTALLATION WILL BE PHASED IN FOLLOWING SUBGRADE OPERATIONS AND FOLLOWING UTILITY CONSTRUCTION, BUT PRIOR TO ROADWAY PAVEMENT CONSTRUCTION. IF CONSTRUCTION ACTIVITIES REQUIRE CONDUIT PLACEMENT AFTER STREET PAVEMENT CONSTRUCTION, THEN CONDUIT WILL NEED TO BE BORED FOR PLACEMENT. OPEN CUT METHOD OF CONDUIT PLACEMENT WILL NOT BE PERMITTED ON NEW PAVEMENT.
 - CONDUIT LENGTHS SHOWN REPRESENT ENTIRE RUN (GROUND BOX-TO-GROUND BOX).
 - IRRIGATION SLEEVES SHALL BE INSTALLED 2-FT AWAY FROM ELECTRIC GROUND BOXES SHOWN ON PLANS, AND NOT CONNECT TO BOXES.

LEGEND

■ EB	PROPOSED ELEC. GROUND BOX
—	PROPOSED 2" CONDUIT
- - - -	PROPOSED 4" IRRIGATION SLEEVE
■ VB	PROPOSED IRRIG. VALVE BOX
○ PB	PROPOSED ILLUMINATION POLE BASE FOUNDATION FOR 30' POLE.

RECORD DRAWING
This drawing is a compilation of the original sealed engineering drawing and modifications by addenda, change orders and information furnished by the contractor. Information shown that was provided by the contractor and others not associated with the design engineer cannot be verified for accuracy or completeness. Original sealed drawing is on file at the office of AECOM USA Group, Inc. TBPE REG. NO. F-3082

ORIGINAL DRAWING SEALED & SIGNED BY
T.H. Gaertner, P.E.
TX NO. 37124

NO.	REVISION	BY	DATE
205 BYPASS PHASE 3			
ILLUMINATION & IRRIGATION PLAN STA. 42+50 TO STA. 57+00			
TCB AECOM		<small>TCB INC. WWW.TCB.AECOM.COM 17300 DALLAS PARKWAY, SUITE 1010 DALLAS, TEXAS 75248</small>	
Unit	PW-DAL-FW	Scale: Horiz: AS SHOWN Vert: AS SHOWN	Date: 11/16/2009
Designed	THG	Checked: TCB	Project No. 60004153
Drawn	FG	Approved: TCB	Sheet 112 of 215