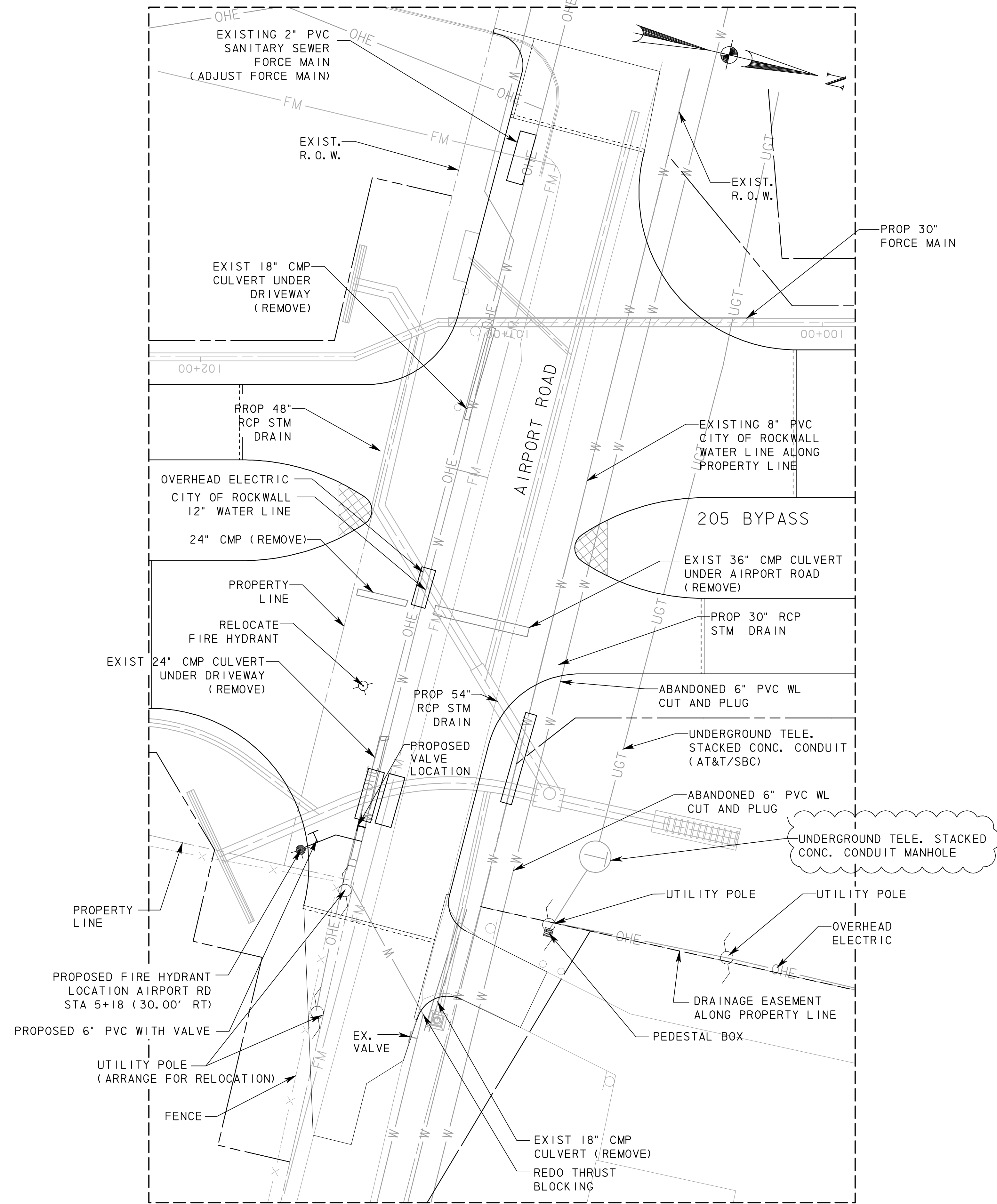
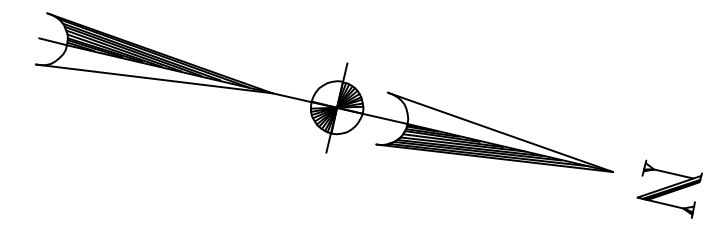


\\usdell1\p001\pww\4328\60004\53-205bypass\cadd\sheet\phase 3 - 1 30 to start\on sh 66\record drawing 10_7_09\106U111\Fes-06.dgn
 11/23/2009



ENLARGED PLAN



- AREAS OF REQUIRED UTILITY ADJUSTMENTS
- PROPOSED ROW
- DRAINAGE EASEMENT
- TEMP SLOPE EASEMENT

UNDERGROUND UTILITIES

THE LOCATION OF EXISTING UTILITIES SHOWN ON THESE PLANS ARE APPROXIMATE AND BASED UPON DATA FURNISHED BY THE CITY OF ROCKWALL AND OTHER UTILITY OWNERS. IT IS THE RESPONSIBILITY OF THE CONTRACTOR TO LOCATE AND VERIFY ON-SITE THE UTILITIES THAT MAY CONFLICT WITH THE CONSTRUCTION.

- NOTES:
1. SEE DRAINAGE PLAN SHEETS FOR DETAILS OF CROSSING THE 8" PVC WATER, LINE, 12" PVC WATER LINE AND THE 2" FORCE MAIN.
 2. SEE 30" FORCE MAIN PLAN SHEETS FOR DETAILS OF CROSSING OF THE 8" PVC WATER LINE, THE 12" PVC WATER LINE, THE 2" FORCE MAIN, AND THE PROPOSED STORM DRAIN LINES.
 3. SEE MISCELLANEOUS DRAINAGE DETAILS FOR UTILITY ADJUSTMENT DETAIL.

RECORD DRAWING

This drawing is a compilation of the original sealed engineering drawing and modifications by addenda, change orders and information furnished by the contractor. Information shown that was provided by the contractor and others not associated with the design engineer cannot be verified for accuracy or completeness. Original sealed drawing is on file at the office of AECOM USA Group, Inc., TBPE REG. NO. F-3082

ORIGINAL DRAWING SEALED & SIGNED BY
 T.H. Gaertner, P.E.
 TX NO. 37124

NO.	AT&T MANHOLE	THG	05/20/08	
NO.	REVISION	BY	DATE	
City of Rockwall, Texas				
205 BYPASS PHASE 3				
UTILITIES LAYOUT AT AIRPORT ROAD				
TCB AECOM		TCB INC. WWW.TCB.AECOM.COM 17300 DALLAS PARKWAY, SUITE 1010 DALLAS, TEXAS 75248		
Unit	PW-DAL-FW	Scale	Horz: AS SHOWN Vert: AS SHOWN	Date
Designed	THG	Checked	TCB	Project No.
Drawn	FG	Approved	TCB	Sheet 106 of 215