

- NOTES:
- SEE AIRPORT ROAD INTERSECTION LAYOUT FOR ADDITIONAL INFORMATION.
 - STATION/OFFSETS REFERENCED FROM AIRPORT ROAD CONTROL LINE UNLESS OTHERWISE NOTED.

LEGEND

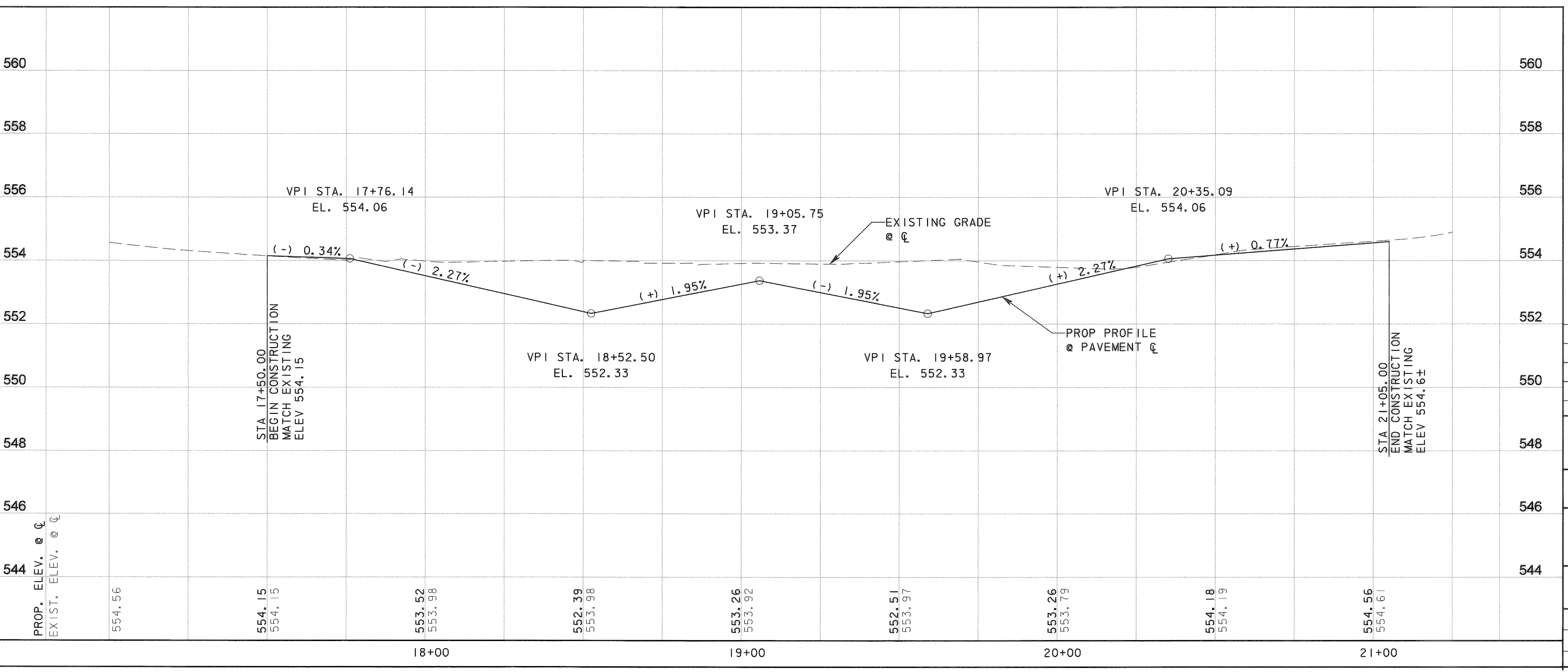
- RIGHT OF WAY
- TEMPORARY SLOPE EASEMENT
- DRAINAGE EASEMENT
- 10' CONCRETE PAVEMENT
- HMAC PAVEMENT
- 9' CONCRETE PAVEMENT
- CURB INLET
- DROP INLET
- DRAINAGE FLOW
- SPOT ELEV. (PROP.)

RECORD DRAWING

This drawing is a compilation of the original sealed engineering drawing and modifications by addenda, change orders and information furnished by the contractor. Information shown that was provided by the contractor and others not associated with the design engineer cannot be verified for accuracy or completeness. Original sealed drawing is on file at the office of AECOM USA Group, Inc., T/BPE REG. NO. F-3082

ORIGINAL DRAWING SEALED & SIGNED BY

T.H. Gaertner, P.E.
TX NO. 37124



NO.	REVISION	BY	DATE
1	AIRPORT ROAD INTERSECTION REVISION	THG	05/20/08

City of Rockwall, Texas

205 BYPASS PHASE 3

PLAN & PROFILE AIRPORT ROAD

TCB AECOM		TCB INC. WWW.TCB.AECOM.COM 17300 DALLAS PARKWAY, SUITE 1010 DALLAS, TEXAS 75248	
Unit: PW-DAL-FW	Scale: Horiz: AS SHOWN Vert: AS SHOWN	Date: 11/16/2009	
Designed: THG	Checked: TCB	Project No: 60004153	
Drawn: FG	Approved: TCB	Sheet: 43 of 215	

\\usd011fp001\pww\4328\60004153-205Bypass\CADD\Sheets\Phase 3 - 1 30 to Station SH 66\Record Drawing 10_7_09\043PP-Airportrd-01.dgn
 11/16/2009