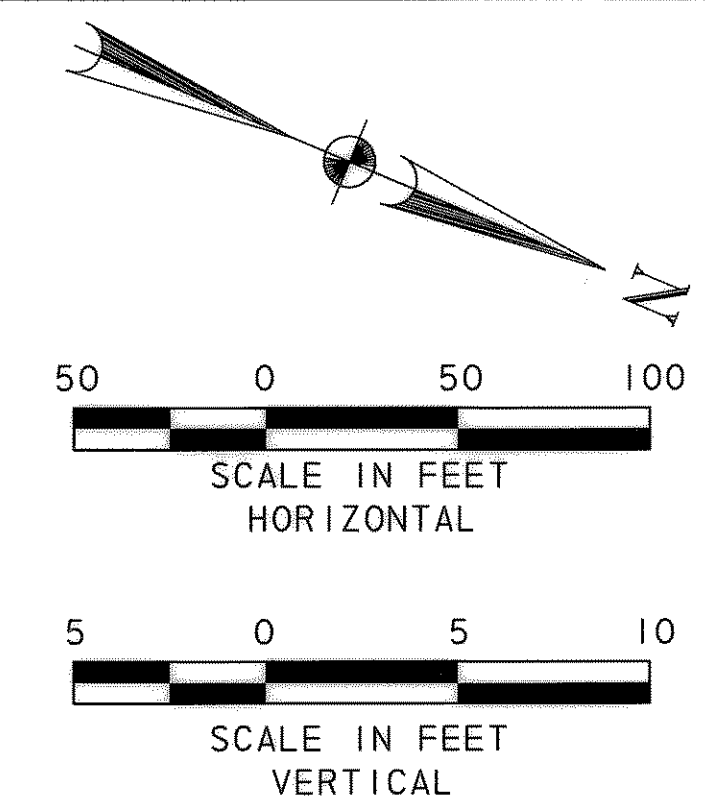
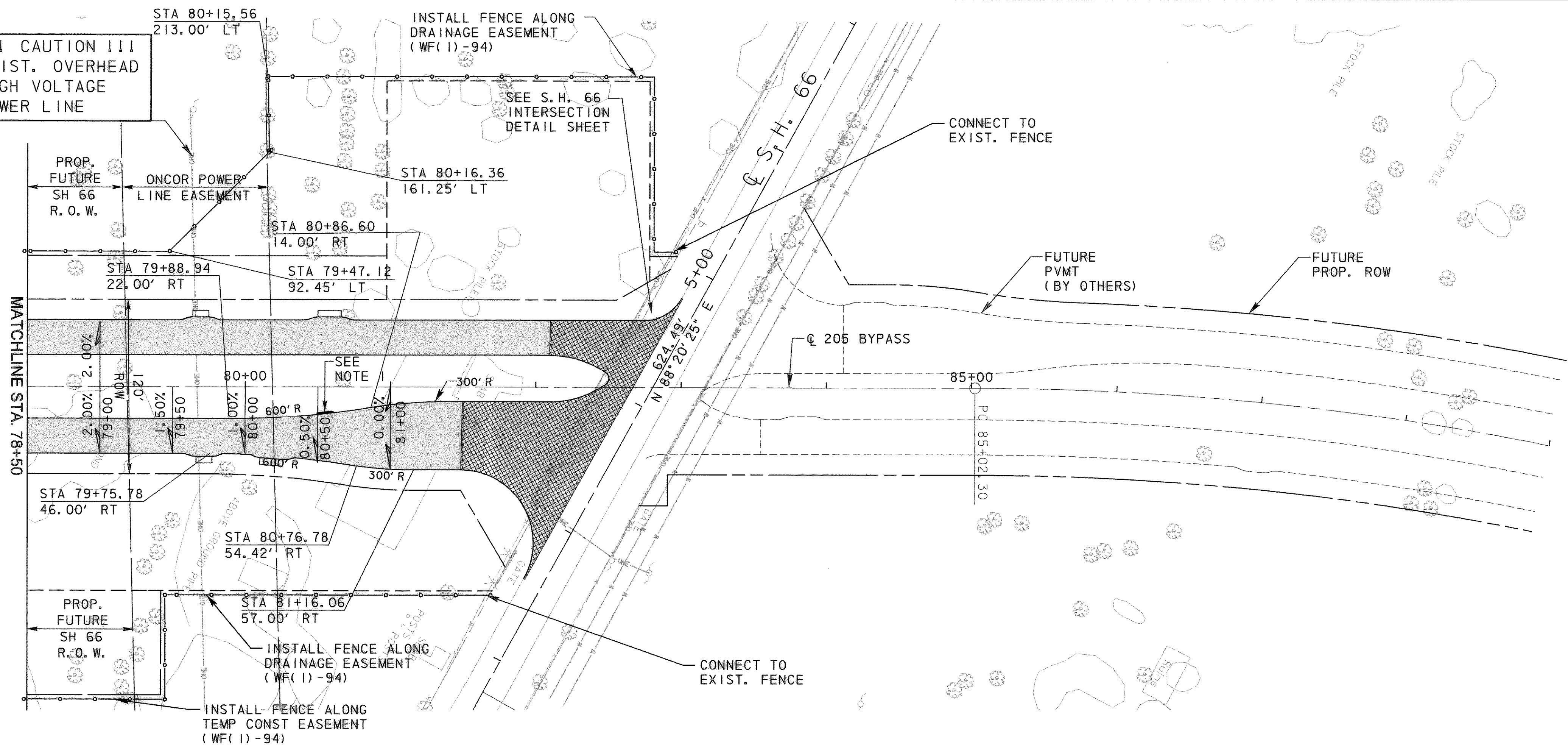
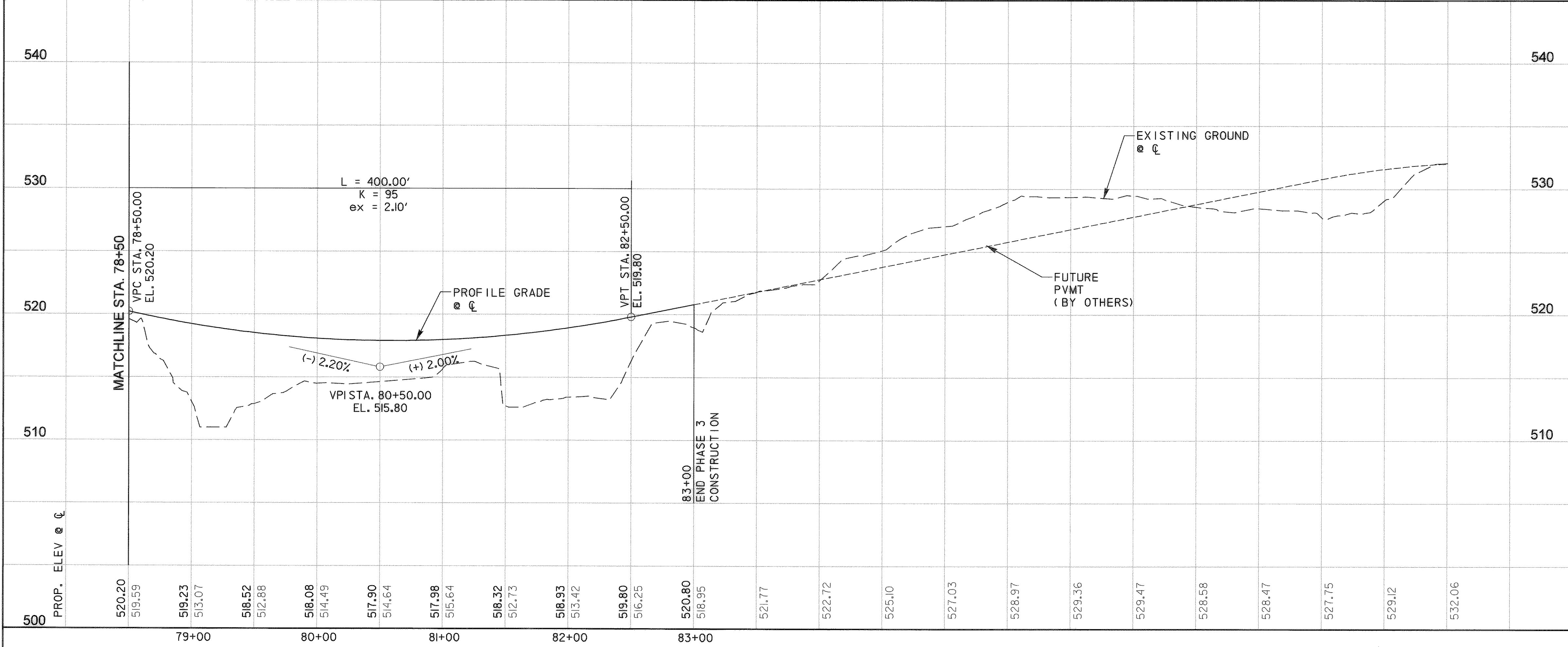


!!! CAUTION !!!
EXIST. OVERHEAD
HIGH VOLTAGE
POWER LINE



- LEGEND**
- RIGHT OF WAY
 - - - TEMPORARY SLOPE EASEMENT
 - - - DRAINAGE EASEMENT
 - ▒ CONCRETE PAVEMENT
 - ▨ HMAC PAVEMENT

- NOTES:**
- CONSTRUCT LANDSCAPE MAINTENANCE RAMP. SEE MISCELLANEOUS ROADWAY DETAILS.



RECORD DRAWING
This drawing is a compilation of the original sealed engineering drawing and modifications by addenda, change orders and information furnished by the contractor. Information shown that was provided by the contractor and others not associated with the design engineer cannot be verified for accuracy or completeness. Original sealed drawing is on file at the office of AECOM USA Group, Inc., TBPE REG. NO. F-3082

ORIGINAL DRAWING SEALED & SIGNED BY
T.H. Gaertner, P.E.
TX NO. 37124

NO.	REVISION	BY	DATE
1	FENCE ADDED	THG	05/20/08

City of Rockwall, Texas

**205 BYPASS
PHASE 3**

**PLAN & PROFILE
STA. 78+50 TO STA. 83+00**

TCB AECOM
TCB INC.
WWW.TCB.AECOM.COM
17300 DALLAS PARKWAY, SUITE 1010
DALLAS, TEXAS 75248

Unit	PW-DAL-FW	Scale:	Horz: AS SHOWN Vert: AS SHOWN	Date	11/16/2009
Designed	THG	Checked	TCB	Project No.	60004153
Drawn	FG	Approved	TCB	Sheet	42 of 215

\\usd011fp001\pww\4328\60004153-205Bypass\CAD\Drawings\Phase 3 - 1 30 to Station SH 66\Record Drawing 10_7_09_042PSheet-09.dgn 11/16/2009