

- NOTES:
1. CONSTRUCT LANDSCAPE MAINTENANCE RAMP. SEE MISCELLANEOUS ROADWAY DETAILS.
 2. PAVEMENT SHOWN ON THIS SHEET SHALL NOT BE CONSTRUCTED UNTIL AFTER PERMISSION IS RECEIVED TO WORK IN THE RAILROAD ROW.
 3. STATION/OFFSETS SHOWN ARE REFERENCED FROM 205 BYPASS CONTROL LINE, UNLESS OTHERWISE SHOWN.
 4. SEE INTERSECTION LAYOUTS FOR ADDITIONAL INFORMATION.

- LEGEND
- 10' CONCRETE PAVEMENT
 - HMAC PAVEMENT
 - RECESSED CURB INLET
 - DROP INLET TYPE H

RECORD DRAWING

This drawing is a completion of the original sealed engineering drawing and modifications by addenda, change orders and information furnished by the contractor. Information shown that was provided by the contractor and others not associated with the design engineer cannot be verified for accuracy or completeness. Original sealed drawing is on file at the office of AECOM USA Group, Inc., TBPE REG. NO. F-3082

ORIGINAL DRAWING
SEALED & SIGNED BY
T.H. Gaertner, P.E.
TX NO. 37124

NO.	REVISION	BY	DATE

City of Rockwall, Texas

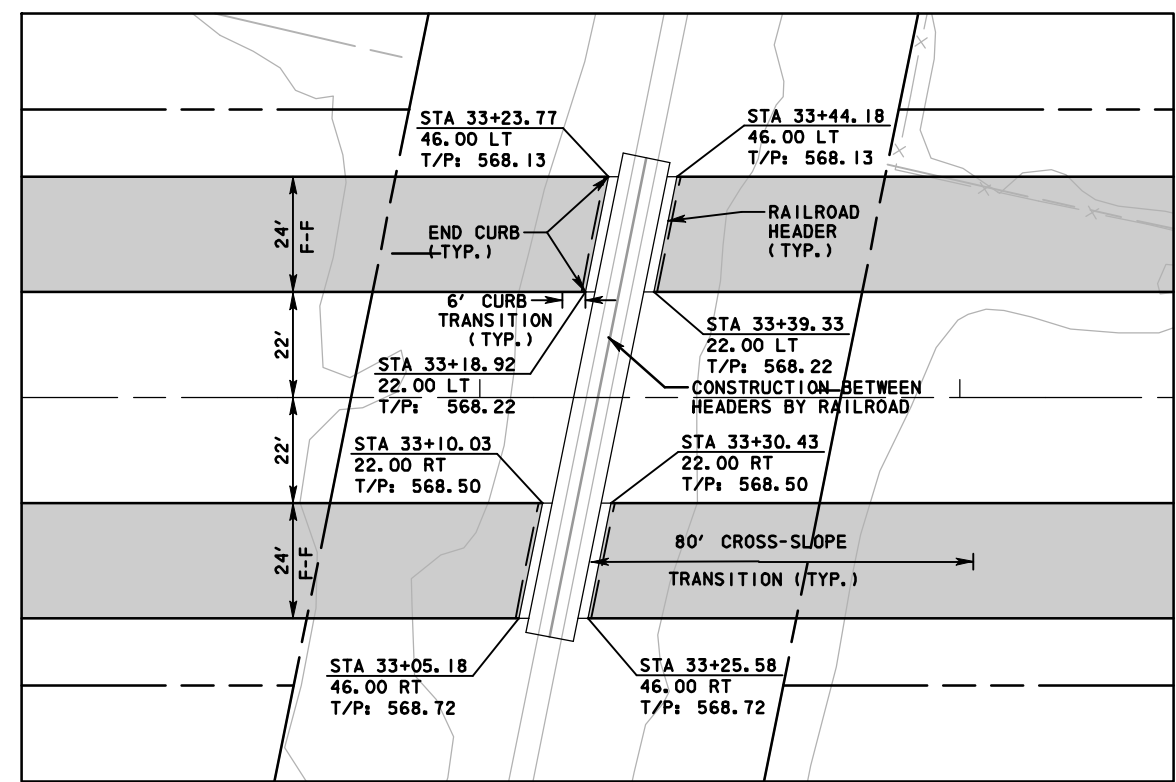
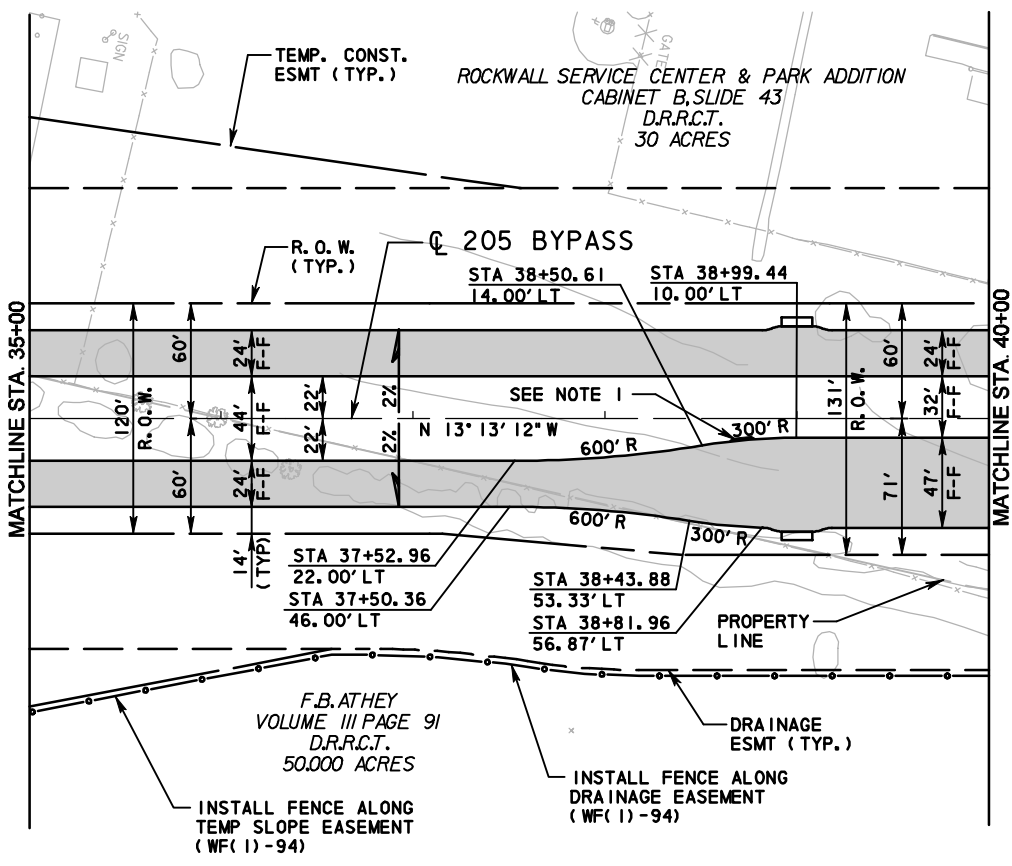
**205 BYPASS
PHASE 3**

**PLAN & PROFILE
STA. 35+00 TO STA. 42+50**

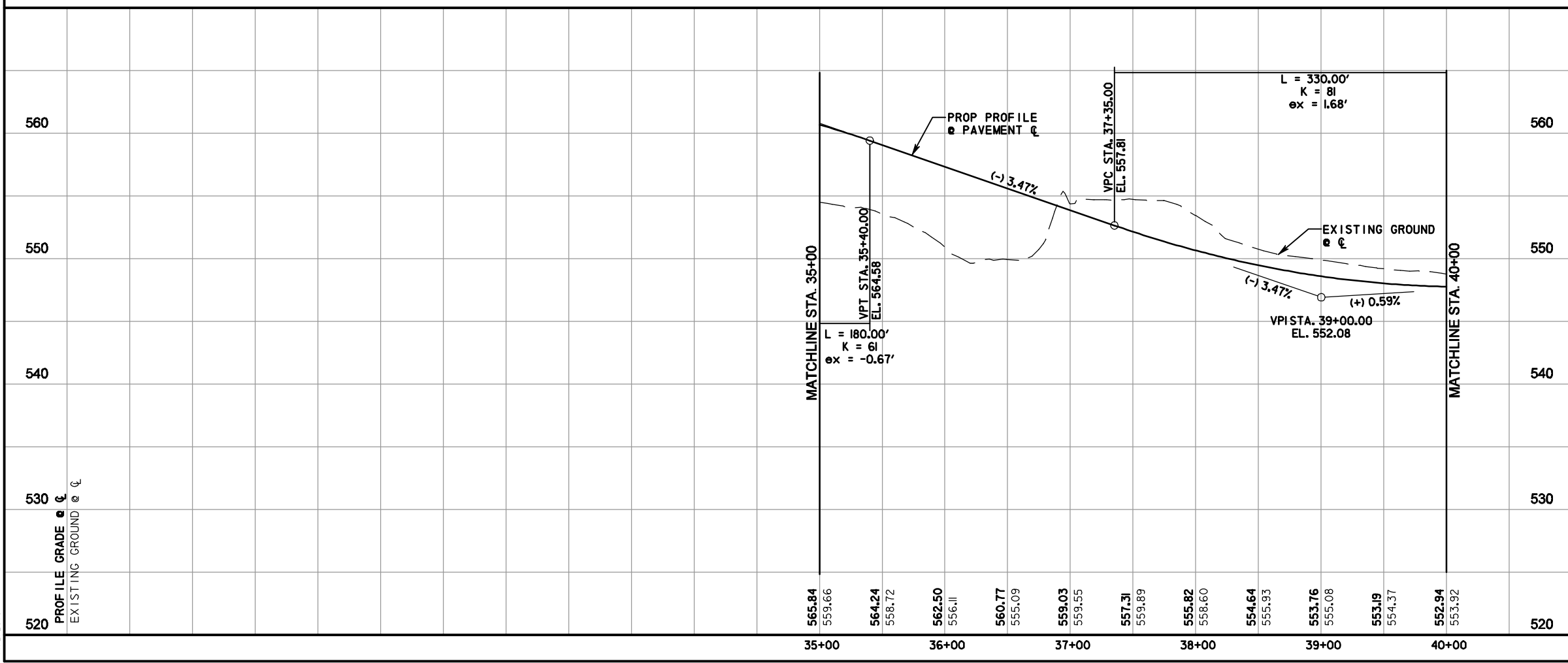
TCB AECOM

TCB INC. WWW.TCB.AECOM.COM
17300 DALLAS PARKWAY, SUITE 1010
DALLAS, TEXAS 75248

Unit	PW-DAL-FW	Scale	Horz: AS SHOWN Vert: AS SHOWN	Date	11/2/2010
Designed	THG	Checked	TCB	Project No.	60004153
Drawn	FG	Approved	TCB	Sheet	37 of 215



RAILROAD CROSSING PLAN DETAIL
SCALE: 1" = 20'



\\ueda11rpo01\pwn4328\60004153-205Bypass\CADD\Sheets\Phase 3 - 1 30 to Station SH 66\Record Drawing 10_7_09\03TPPSheet-04.dgn
 11/2/2010