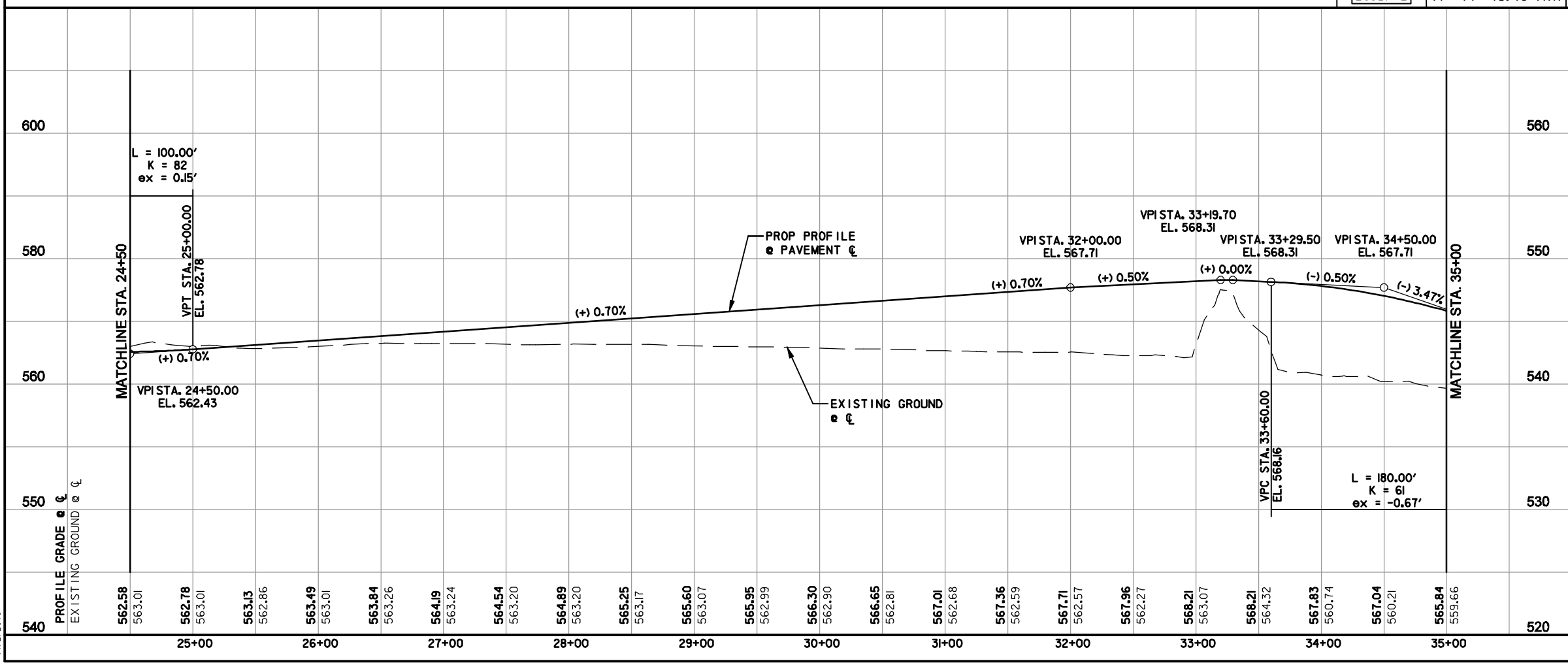
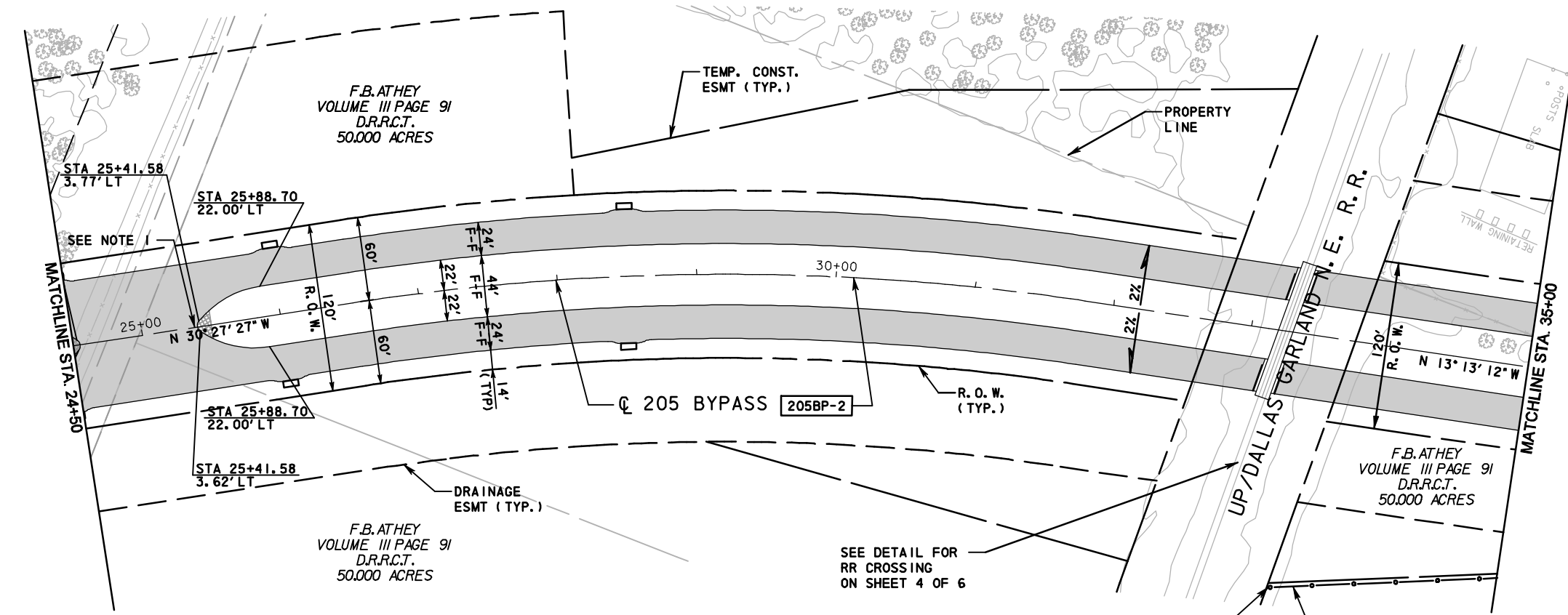


- NOTES:
- CONSTRUCT BRICK PAVERS. SEE MISCELLANEOUS ROADWAY DETAILS.
  - PAVEMENT SHOWN ON THIS SHEET SHALL NOT BE CONSTRUCTED UNTIL AFTER PERMISSION IS RECEIVED TO WORK IN THE RAILROAD ROW.

LEGEND

- 10' CONCRETE PAVEMENT
- HMAC PAVEMENT
- RECESSED CURB INLET
- DROP INLET TYPE H

CURVE DATA					
NO.	Δ	D	R	T	L
205BP-2	17° 14' 15.19" (RT)	3' 16' 26.56"	1,750.00'	265.25'	526.49'



**RECORD DRAWING**

This drawing is a completion of the original sealed engineering drawing and modifications by addenda, change orders and information furnished by the contractor. Information shown that was provided by the contractor and others not associated with the design engineer cannot be verified for accuracy or completeness. Original sealed drawing is on file at the office of AECOM USA Group, Inc., TBPE REG. NO. F-3082

ORIGINAL DRAWING SEALED & SIGNED BY  
 T.H. Gaertner, P.E.  
 TX NO. 37124

NO.	REVISION	BY	DATE

**City of Rockwall, Texas**

**205 BYPASS PHASE 3**

**PLAN & PROFILE STA. 24+50 TO STA. 35+00**

TCB AECOM

TCB INC. WWW.TCB.AECOM.COM  
 17300 DALLAS PARKWAY, SUITE 1010  
 DALLAS, TEXAS 75248

Unit	PW-DAL-FW	Scale	Horz: AS SHOWN Vert: AS SHOWN	Date	11/2/2010
Designed	THG	Checked	TCB	Project No.	60004153
Drawn	FG	Approved	TCB	Sheet	36 of 215

\\usdall11p001\p\4328\60004153-205Bypass\CADD\Sheets\Phase 3 - 1 30 to Station Sh 66\Record Drawing 10\_7\_09\036PFSheet-03.dgn  
 11/2/2010