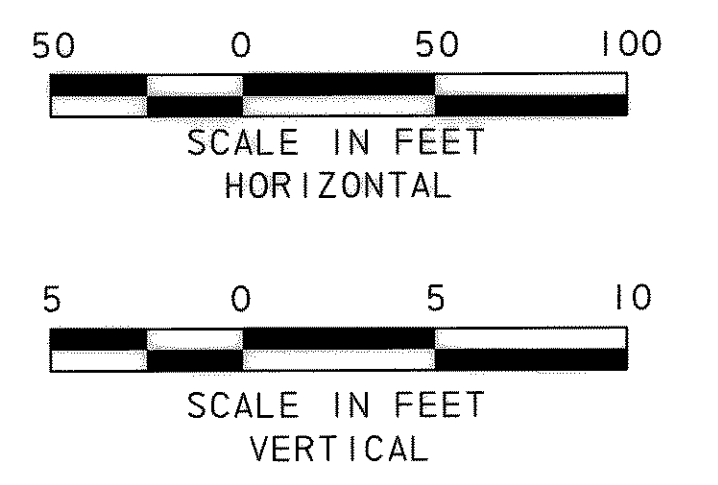
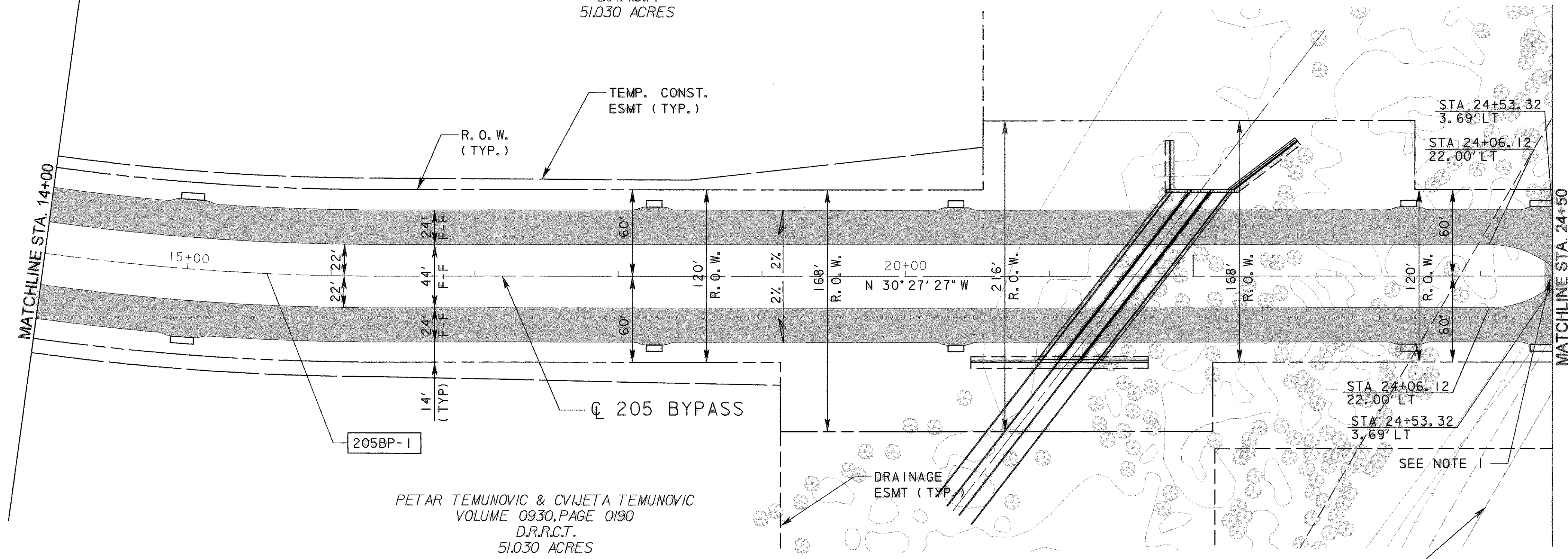


PETAR TEMUNOVIC & CVIJETA TEMUNOVIC  
VOLUME 0930, PAGE 0190  
D.R.R.C.T.  
51.030 ACRES



NOTES:  
1. CONSTRUCT BRICK PAVERS.  
SEE MISCELLANEOUS  
ROADWAY DETAILS.

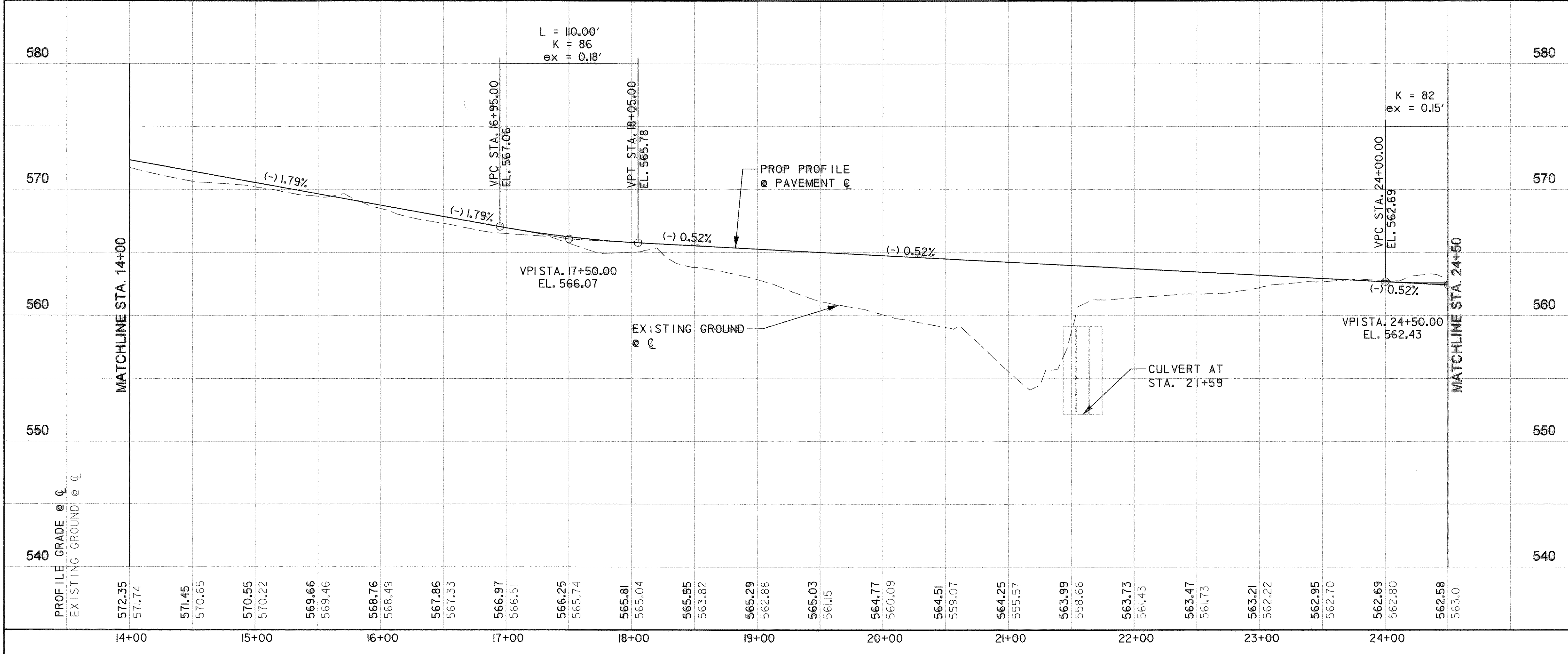
LEGEND

	10" CONCRETE PAVEMENT
	HMAC PAVEMENT
	RECESSED CURB INLET
	DROP INLET TYPE H

CURVE DATA					
NO.	Δ	D	R	T	L
205BP-1	30° 07' 08.51" (LT)	3' 16' 26.56"	1,750.00'	470.86'	919.93'

PETAR TEMUNOVIC & CVIJETA TEMUNOVIC  
VOLUME 0930, PAGE 0190  
D.R.R.C.T.  
51.030 ACRES

PROPERTY LINE



**RECORD DRAWING**  
This drawing is a compilation of the original sealed engineering drawing and modifications by addenda, change orders and information furnished by the contractor. Information shown that was provided by the contractor and others not associated with the design engineer cannot be verified for accuracy or completeness. Original sealed drawing is on file at the office of AECOM USA Group, Inc., TBPE REG. NO. F-3082

ORIGINAL DRAWING  
SEALED & SIGNED BY  
T.H. Gaertner, P.E.  
TX NO. 37124

NO.	REVISION	BY	DATE

City of Rockwall, Texas

205 BYPASS  
PHASE 3

PLAN & PROFILE  
STA. 14+00 TO STA. 24+50

TCB AECOM  
TCB INC.  
WWW.TCB.AECOM.COM  
17300 DALLAS PARKWAY, SUITE 1010  
DALLAS, TEXAS 75248

Unit	PW-DAL-FW	Scale	Horz: AS SHOWN Vert: AS SHOWN	Date	11/16/2009
Designed	THG	Checked	TCB	Project No.	60004153
Drawn	FG	Approved	TCB	Sheet	35 of 215

\\uadd11fp001\PM\4328\60004153-205Bypass\CADD\Sheets\Phase 3 - 1 30 to Station SH 66\Record Drawing 10.7.09\035P1Sheet-02.dgn  
 11/16/2009