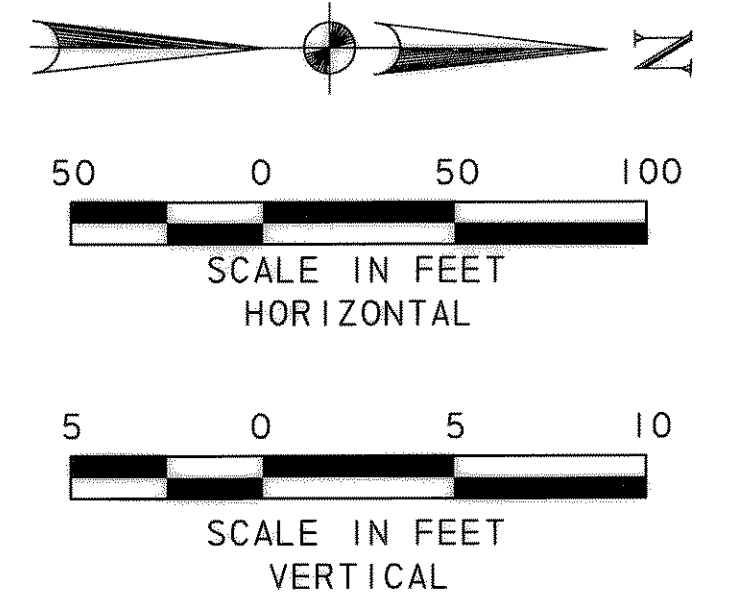
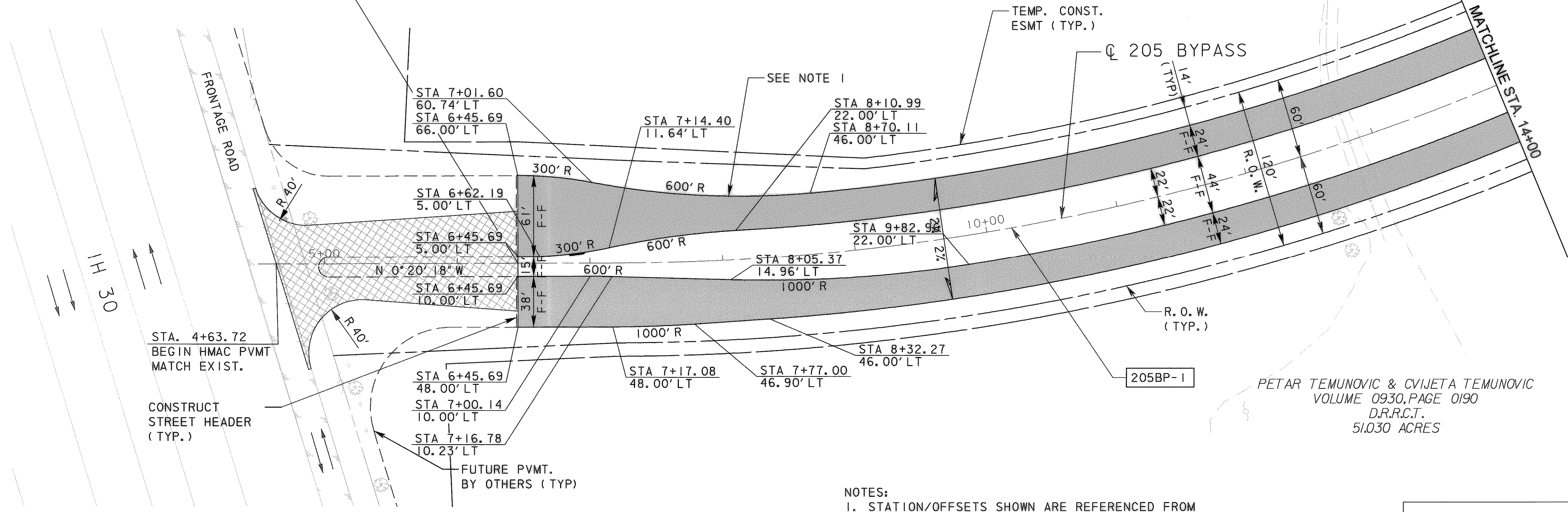


PETAR TEMUNOVIC & CVIJETA TEMUNOVIC
VOLUME 0930, PAGE 0190
D.R.R.C.T.
51.030 ACRES



STA. 6+45.69
END HMAC PVMT;
BEGIN CONC. PVMT. W/ 6" MONO CURB



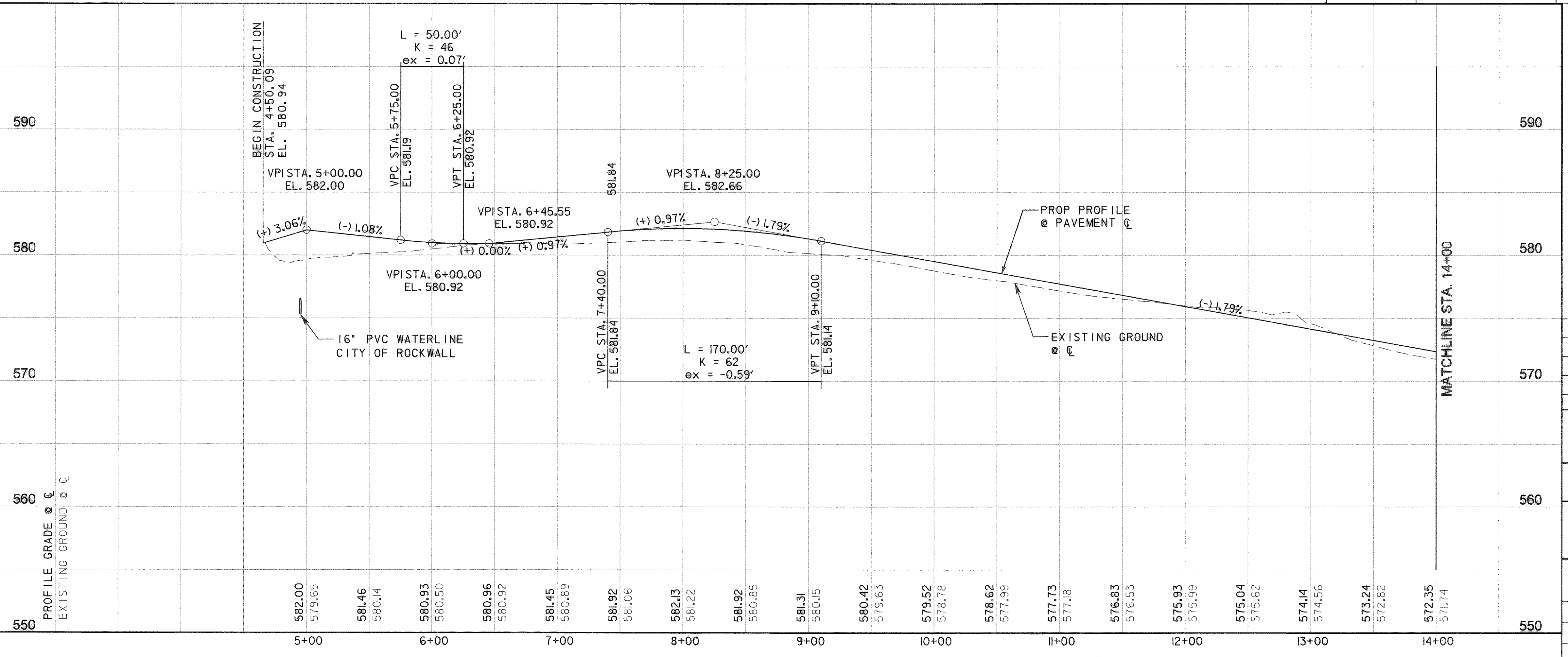
NOTES:
1. CONSTRUCT LANDSCAPE MAINTENANCE RAMP. SEE MISCELLANEOUS ROADWAY DETAILS.

LEGEND

- 10" CONCRETE PAVEMENT
- HMAC PAVEMENT
- RECESSED CURB INLET
- DROP INLET TYPE H

NOTES:
1. STATION/OFFSETS SHOWN ARE REFERENCED FROM 205 BYPASS CONTROL LINE, UNLESS OTHERWISE SHOWN.
2. SEE INTERSECTION LAYOUTS FOR ADDITIONAL INFORMATION.

CURVE DATA					
NO.	Δ	D	R	T	L
205BP-1	30° 07' 08.51" (LT)	3' 16" 26.56"	1,750.00'	470.86'	919.93'



RECORD DRAWING
This drawing is a compilation of the original sealed engineering drawing and modifications by addenda, change orders and information furnished by the contractor. Information shown that was provided by the contractor and others not associated with the design engineer cannot be verified for accuracy or completeness. Original sealed drawing is on file at the office of AECOM USA Group, Inc., TBPE REG. NO. F-3082

ORIGINAL DRAWING SEALED & SIGNED BY
T.H. Gaertner, P.E.
TX NO. 37124

NO.	REVISION	BY	DATE

City of Rockwall, Texas

205 BYPASS PHASE 3

PLAN & PROFILE STA. 5+00 TO STA. 14+00

TCB AECOM
TCB INC. WWW.TCB.AECOM.COM
17300 DALLAS PARKWAY, SUITE 1010
DALLAS, TEXAS 75248

Unit	PW-DAL-FW	Scale	Horz: AS SHOWN Vert: AS SHOWN	Date	11/16/2009
Designed	THG	Checked	TCB	Project No.	60004153
Drawn	FG	Approved	TCB	Sheet	34 of 215

\\usd011fp001\pww\4328\60004153-205bypass\CADD\Sheets\Phase 3 - 1 30 To Station SH 66\Record Draw\ng 10-7-09\034PSheet-01.dgn
11/16/2009