

LEGEND

- RIGHT-OF-WAY -----
- DRAINAGE EASEMENT -----
- TEMP. CONSTRUCTION EASEMENT -----
- 205 BYPASS PAVING [Shaded Area]

UNDERGROUND UTILITIES

THE LOCATION OF EXISTING UTILITIES SHOWN ON THESE PLANS ARE APPROXIMATE AND BASED ON DATA FURNISHED BY THE CITY OF ROCKWALL. IT IS THE RESPONSIBILITY OF THE CONTRACTOR TO LOCATE AND VERIFY ON-SITE THE UTILITIES THAT MAY CONFLICT WITH THE CONSTRUCTION.

NOTES:

1. INSTALL HORIZONTAL AND VERTICAL THRUST BLOCKING AND MECHANICAL JOINT RESTRAINT AT ALL DUCTILE IRON FITTINGS.
2. INSTALL POLYETHYLENE WRAP AROUND BURIED DUCTILE IRON FITTINGS.
3. PROVIDE HORIZONTAL CURVE BY JOINT DEFLECTION ONLY. PIPE FLEXURE WILL NOT BE PERMITTED. MAXIMUM ALLOWABLE JOINT DEFLECTION SHALL BE THE LESSER OF THE FOLLOWING:
 A) 0.8 DEGREE, OR
 B) 80% OF THE ASTM/TCEQ/MANUFACTURER'S RECOMMENDED MAXIMUM JOINT DEFLECTION.

RECORD DRAWING

This drawing is a compilation of the original sealed engineering drawing and modifications by addenda, change orders and information furnished by the contractor. Information shown that was provided by the contractor and others not associated with the design engineer cannot be verified for accuracy or completeness. Original sealed drawing is on file at the office of AECOM USA Group, Inc., TBPE REG. NO. F-3082

ORIGINAL DRAWING SEALED & SIGNED BY
 Nicholas R. Batker, P.E.
 TX NO. 92749

NO.	REVISION	BY	DATE

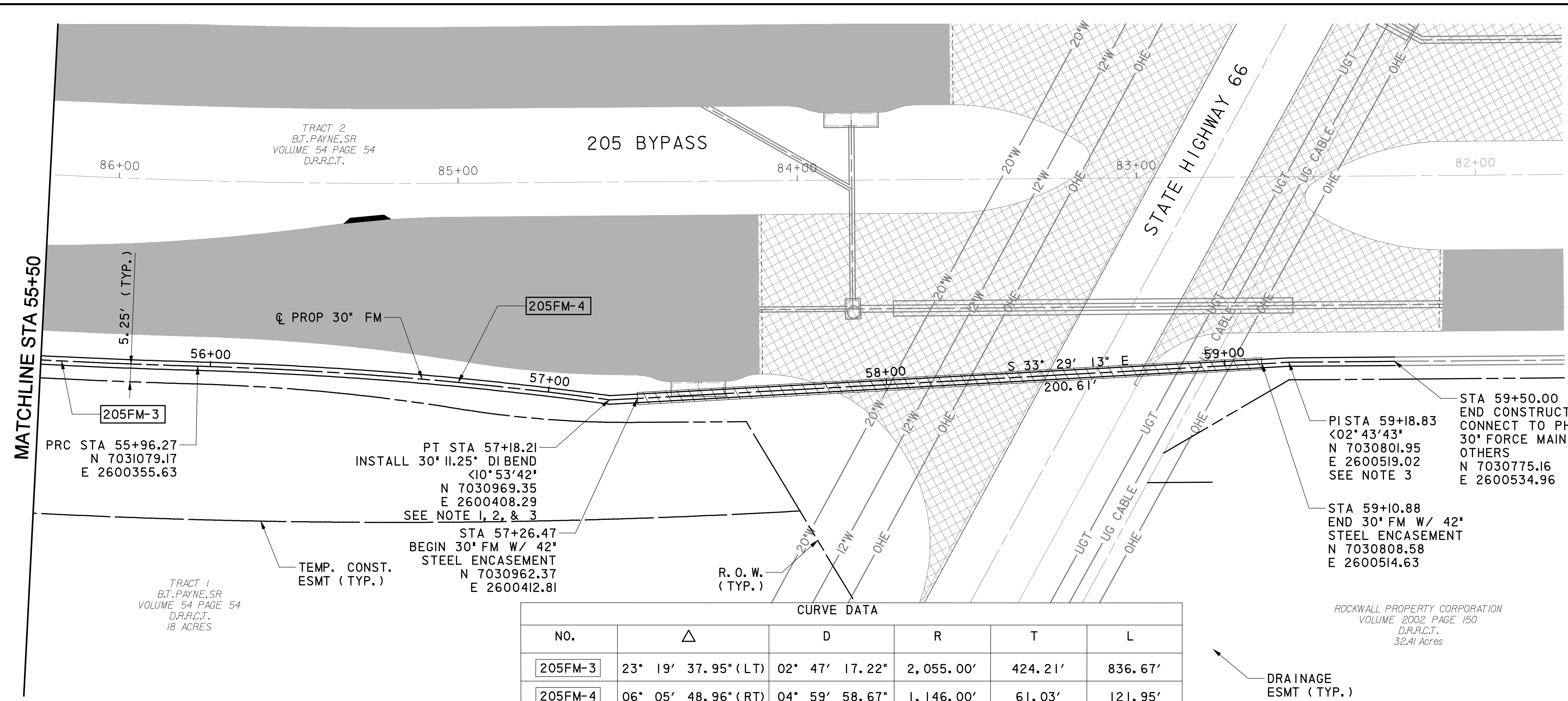


205 BYPASS PHASE 2

30" FORCE MAIN PLAN & PROFILE STA 55+50 TO 69+50

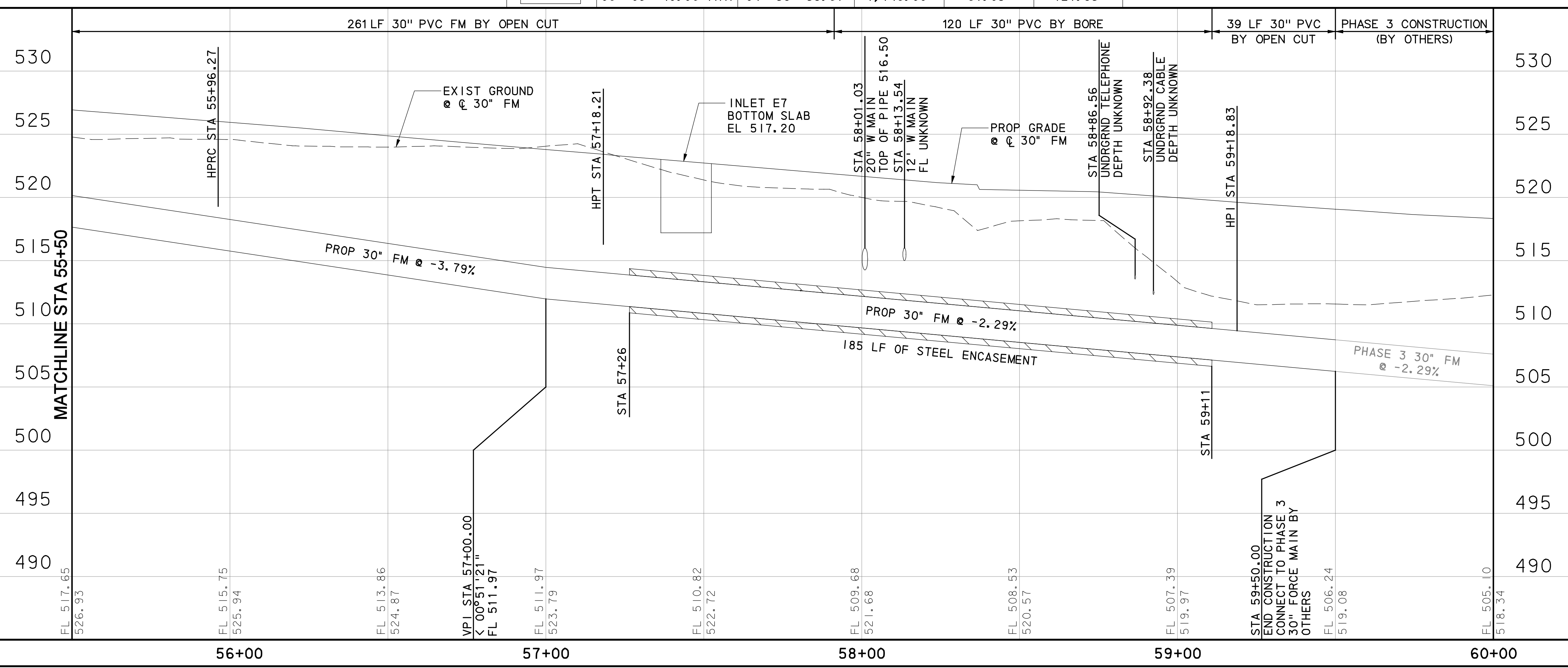
TCB AECOM
 TCB INC. WWW.TCB.AECOM.COM
 17300 DALLAS PARKWAY, SUITE 1010
 DALLAS, TEXAS 75248

Unit	PW-DAL-FW	Scale	Horz: 1"=40' Vert: 1"=10'	Date	11/23/2009
Designed	JLT/SDB	Checked	NRB	Project No.	60023784
Drawn	TCB	Approved	NRB	Sheet	81 of 142



CURVE DATA

NO.	Δ	D	R	T	L
205FM-3	23° 19' 37.95" (LT)	02° 47' 17.22"	2,055.00'	424.21'	836.67'
205FM-4	06° 05' 48.96" (RT)	04° 59' 58.67"	1,146.00'	61.03'	121.95'



11/23/2009 8:22:48 AM
 P:\3328\60004153-205Bypass\CADD\Sheets\Phase 2 - SH 66 To I20+DD\Record Drawing_10_7_09_081P&R09.dgn