

- NOTES:
1. FLOWLINE ELEVATIONS AND GRADES ARE CALCULATED FROM APPROPRIATE CENTER TO CENTER OF PROPOSED DRAINAGE STRUCTURES. PIPE LENGTHS ON PLANS ARE ACTUAL LENGTHS USED IN QUANTITY TAKEOFFS.
 2. ALL UTILITIES SHOWN ARE APPROXIMATE AND SHOULD BE FIELD VERIFIED AS TO THE LOCATION AND DEPTH PRIOR TO CONSTRUCTION.
 3. ALL STORM DRAIN PIPE IS CLASS III UNLESS OTHERWISE NOTED.
 4. THE CONTROL POINT FOR RECESSED CURB INLETS IS AT THE CENTER OF THE OUTSIDE FACE OF THE INLET.
 5. INLET LIDS TO BE LOCKING.

LEGEND

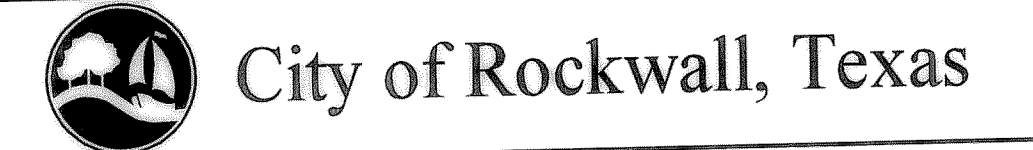
Q = FLOW RATE (CFS)
 Qc = FLOW CAPACITY (CFS)
 Sf = FRICTION SLOPE (%)
 V = VELOCITY (FPS)
 D = DEPTH (FT)

RECORD DRAWING

This drawing is a compilation of the original sealed engineering drawing and modifications by addenda, change orders and information furnished by the contractor. Information shown not associated with the design engineer cannot be verified for accuracy or completeness. Original sealed drawing is on file at the office of AECOM USA Group, Inc., T&E REG. NO. F-3082

ORIGINAL DRAWING SEALED & SIGNED BY
 T.H. Gaertner, P.E.
 TX NO. 37124

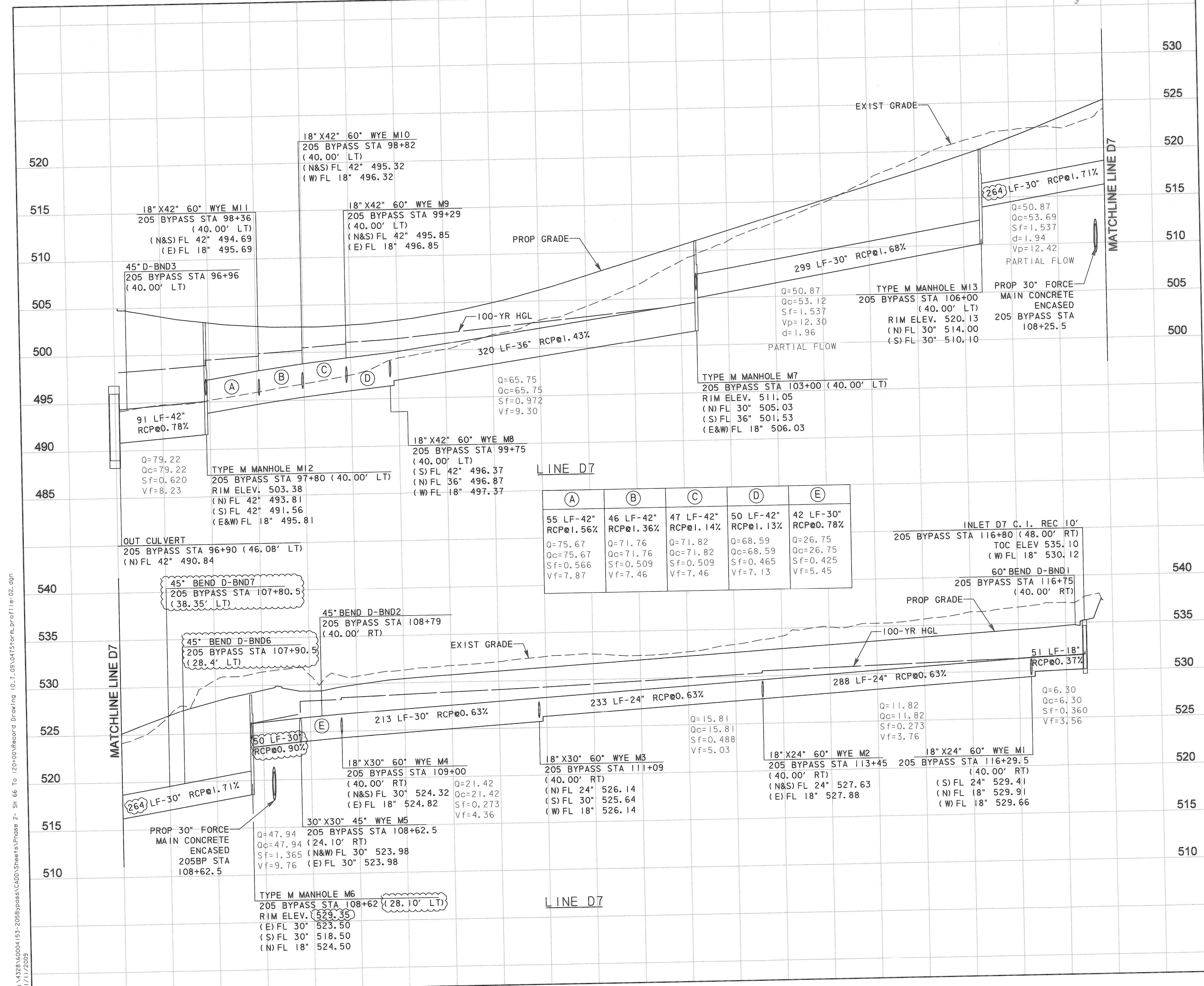
NO.	ADDED D-BND6 AND D-BND7	THG	10/23/08
	REVISION	BY	DATE



205 BYPASS PHASE 2

STORM DRAIN PROFILE LINE D7

Unit	PW-DAL-FW	Scale	Horz: AS SHOWN Vert: AS SHOWN	Date	11/11/2009
Designed	SDB	Checked	TCB	Project No.	60004153
Drawn	FG	Approved	TCB	Sheet	47 of 142



LINE D7

A	B	C	D	E
55 LF-42" RCP@1.56%	46 LF-42" RCP@1.36%	47 LF-42" RCP@1.14%	50 LF-42" RCP@1.13%	42 LF-30" RCP@0.78%
Q=75.67 Qc=75.67 Sf=0.566 Vf=7.87	Q=71.76 Qc=71.76 Sf=0.509 Vf=7.46	Q=71.82 Qc=71.82 Sf=0.509 Vf=7.46	Q=68.59 Qc=68.59 Sf=0.465 Vf=7.13	Q=26.75 Qc=26.75 Sf=0.425 Vf=5.45

LINE D7

A	B	C	D	E
18" X30" 60" WYE M4 205 BYPASS STA 109+00 (40.00' RT) (N&S) FL 30" 524.32 (E) FL 18" 524.82	18" X30" 60" WYE M3 205 BYPASS STA 111+09 (40.00' RT) (N) FL 24" 526.14 (S) FL 30" 525.64 (W) FL 18" 526.14	18" X24" 60" WYE M2 205 BYPASS STA 113+45 (40.00' RT) (N&S) FL 24" 527.63 (E) FL 18" 527.88	18" X24" 60" WYE M1 205 BYPASS STA 116+29.5 (40.00' RT) (S) FL 24" 529.41 (N) FL 18" 529.91 (W) FL 18" 529.66	

P:\4328\60004153-205Bypass\CADD\Sheets\Phase 2 - Sfr 66 To 120+00\Record Drawing 10_7_09\04StormProfile-02.dgn
 11/11/2009