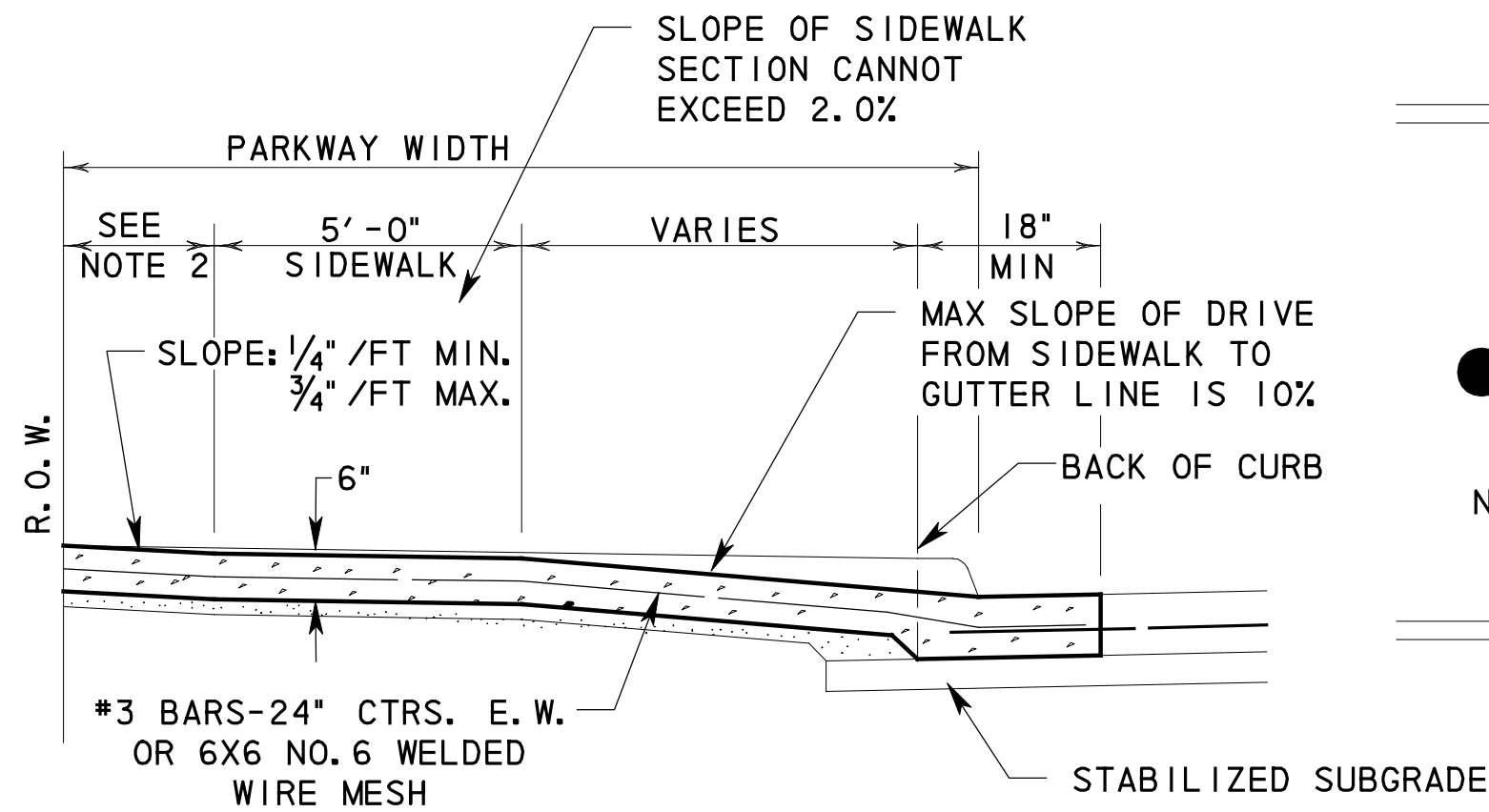


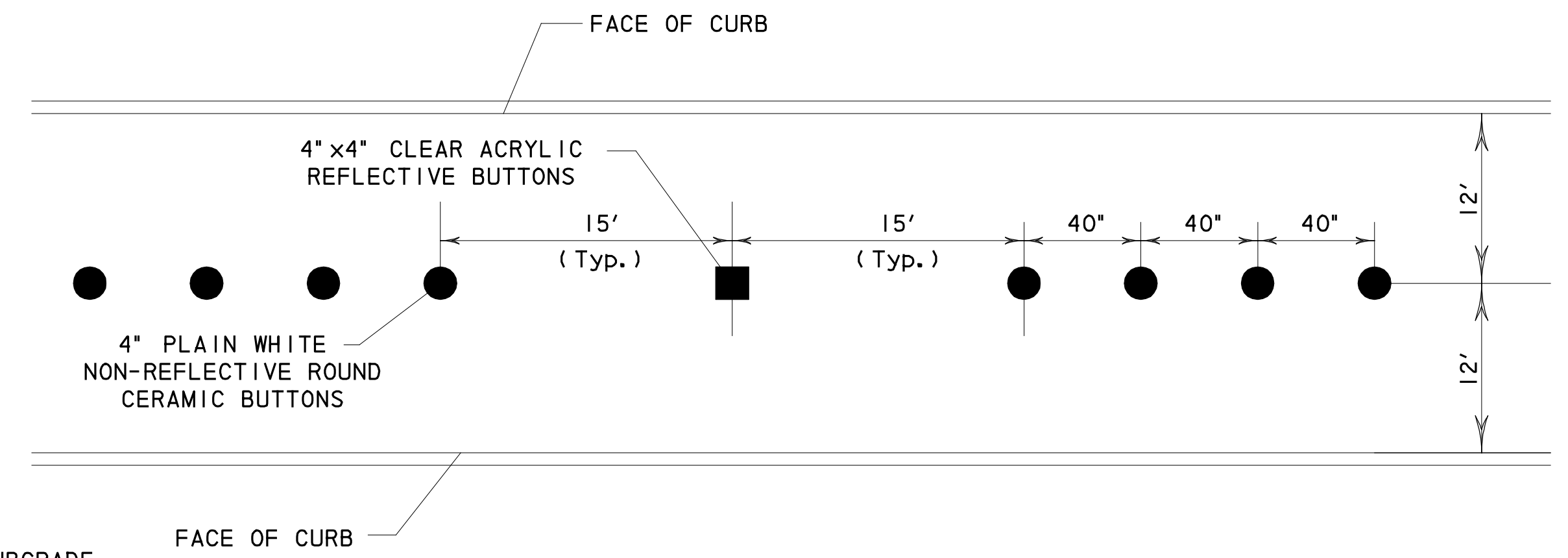
TYPICAL CROSS SECTION

NOTE:
PAVING STONE SHALL BE INTERLOCKING CONCRETE LANDSCAPE PAVERS PER TxDOT SPECIFICATIONS ITEM 528. COLOR AND PATTERN TO BE SELECTED BY OWNER.

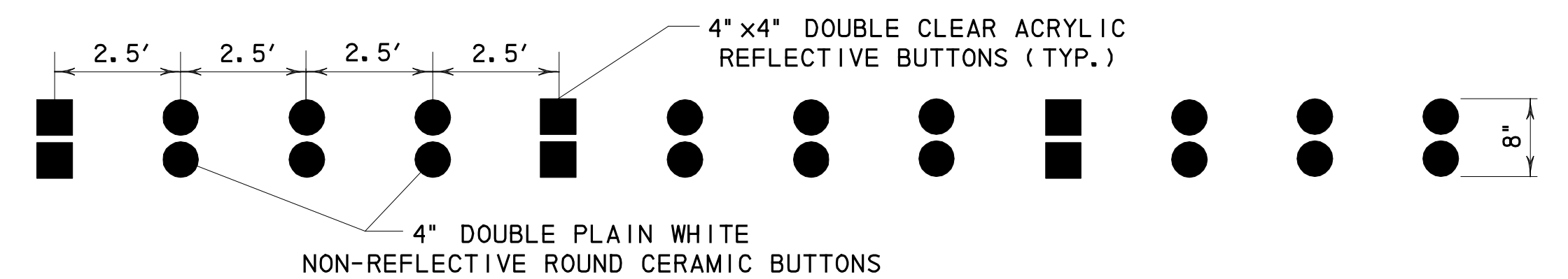


NOTES: 1. SIDEWALK SECTION THRU DRIVEWAY TO BE SAME THICKNESS AS DRIVEWAY.
2. DISTANCE BETWEEN ROW AND WALK IS 2'-0" UNLESS OTHERWISE NOTED ON PLAN SHEETS.

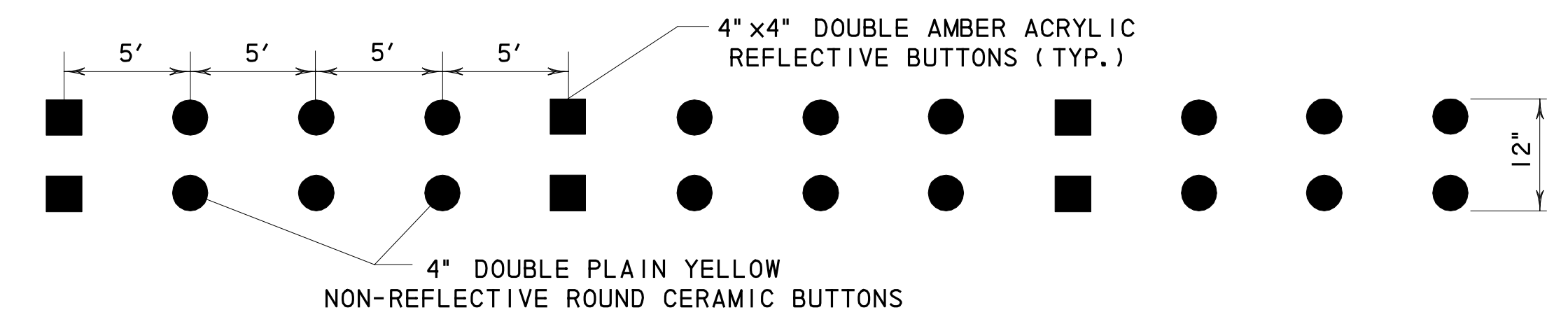
DRIVEWAY SECTION A-A



BUTTON TYPE LANE MARKING DETAIL
N.T.S



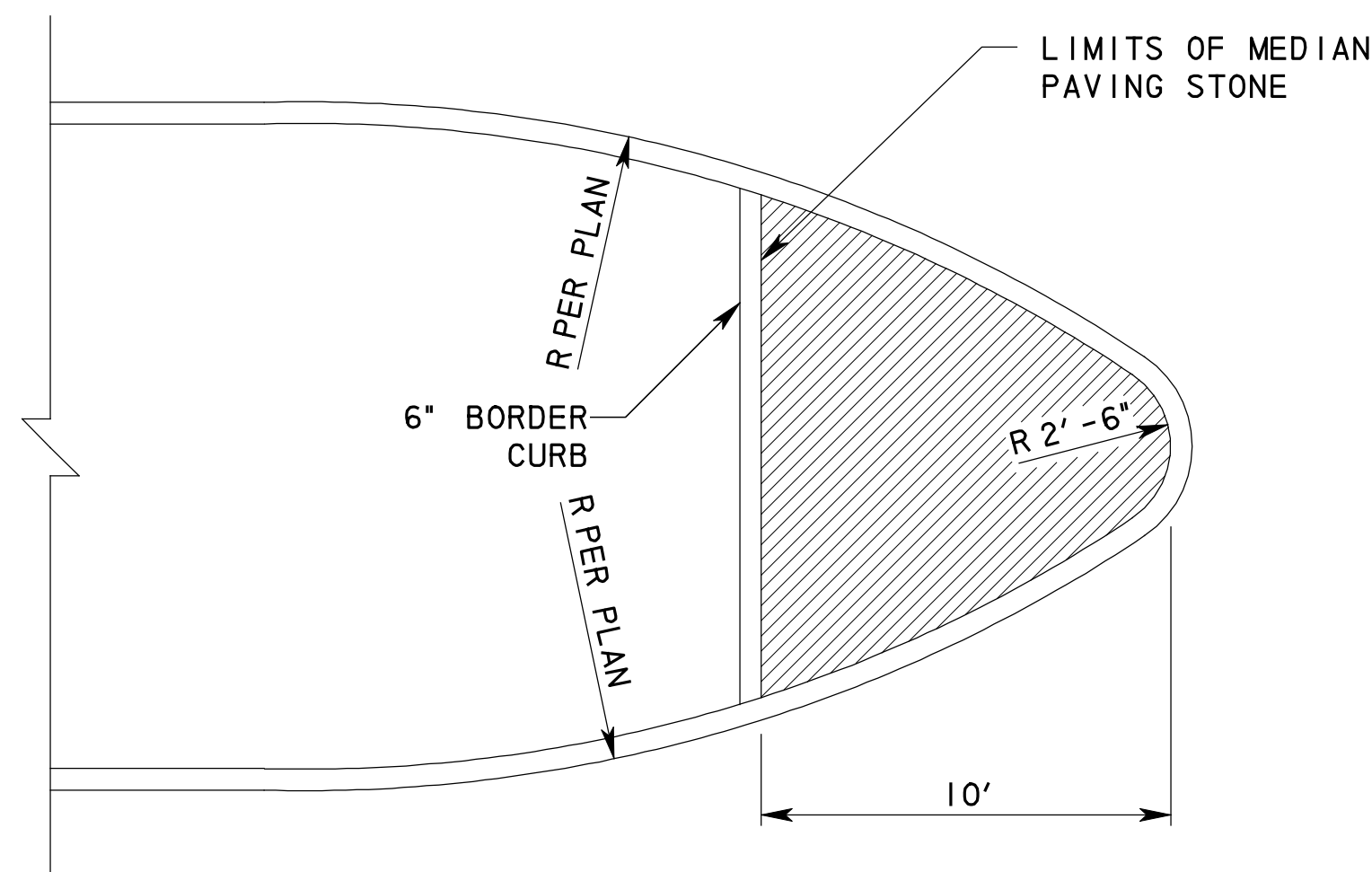
BUTTON TURN BAY LINE MARKING DETAIL
N.T.S



DOUBLE YELLOW BUTTON LINE MARKING DETAIL
N.T.S

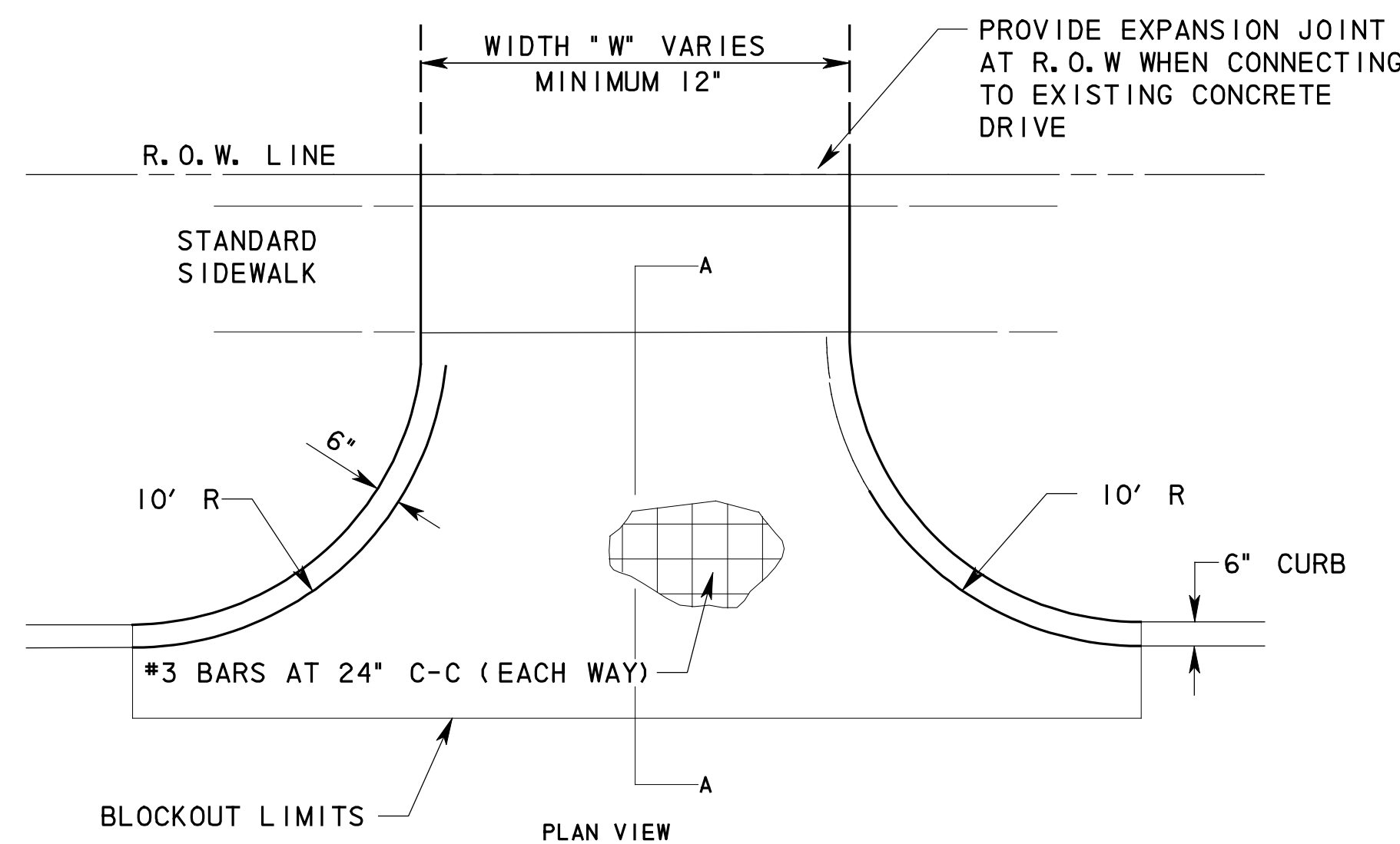
RECORD DRAWING
This drawing is a compilation of the original sealed engineering drawing and modifications by addenda, change orders and information furnished by the contractor. Information shown that was provided by the contractor and others not associated with the design engineer cannot be verified for accuracy or completeness. Original sealed drawing is on file at the office of AECOM USA Group, Inc., TBPE REG. NO. F-3082

ORIGINAL DRAWING SEALED & SIGNED BY
T.H. Gaertner, P.E.
TX NO. 37124

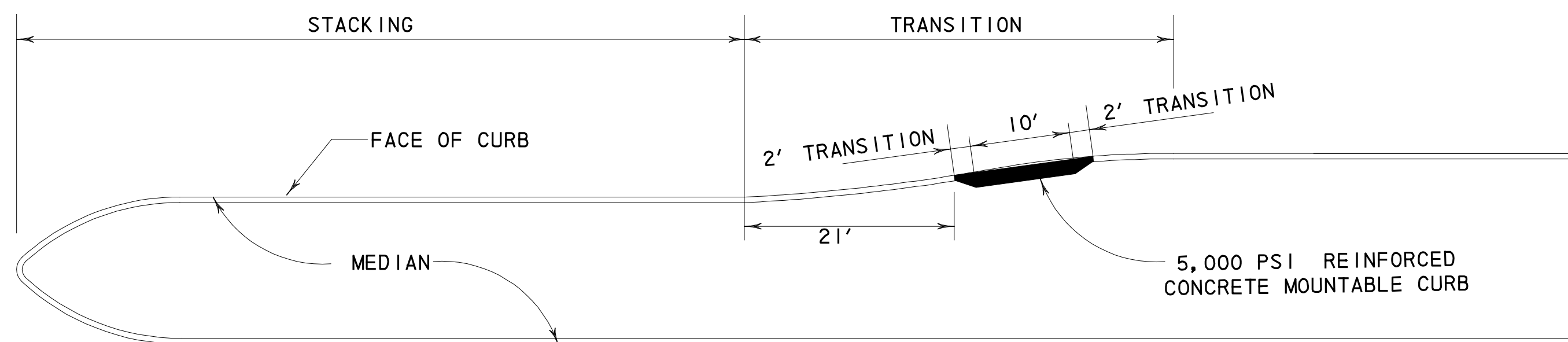


DETAIL OF NOSE FOR MEDIAN ISLAND

MEDIAN PAVING STONE DETAIL



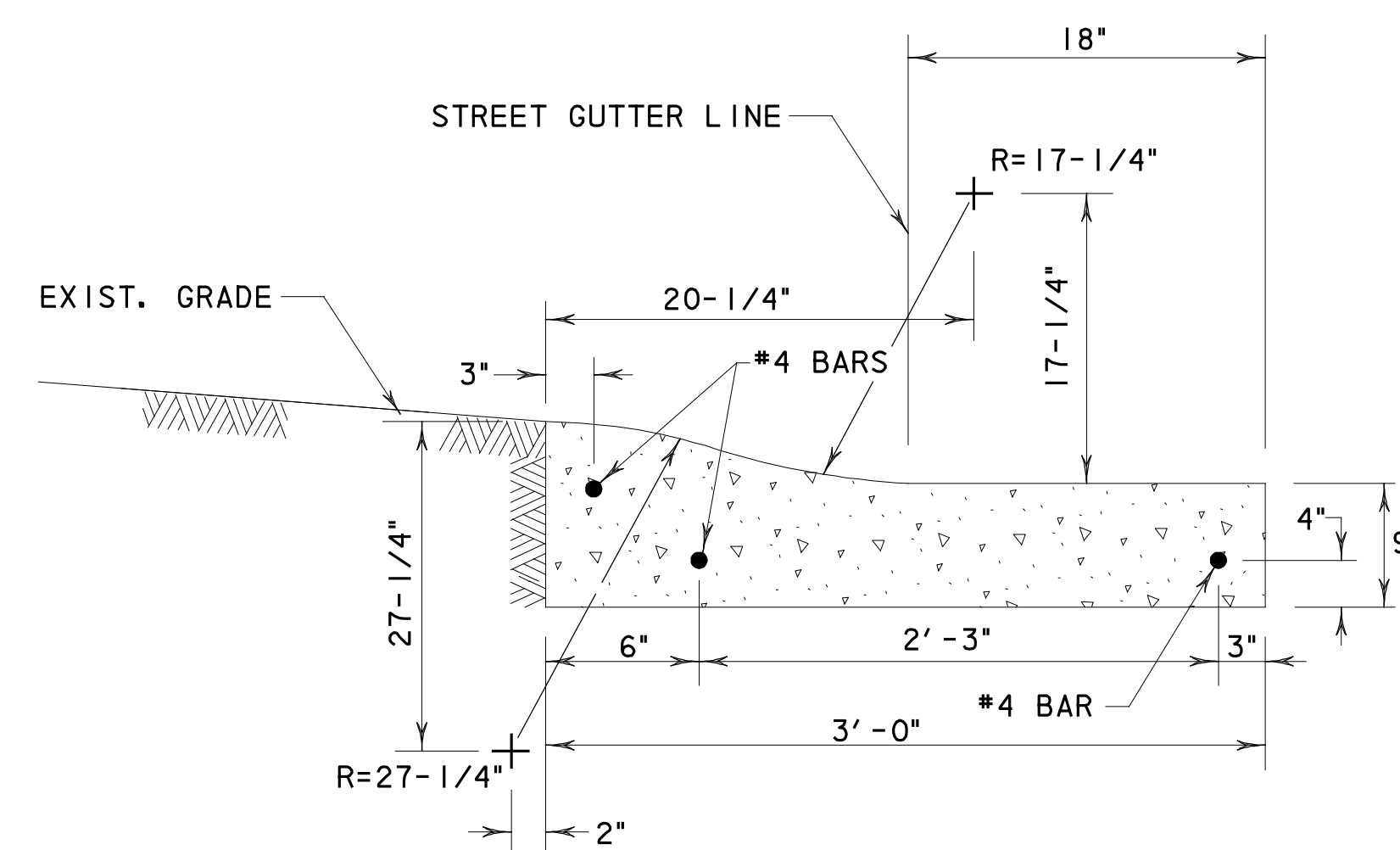
DRIVEWAY DETAIL
N.T.S



NOTE: NO RAMPING SHALL BE IN FRONT OF STANDARD CURB

PLAN VIEW

LANDSCAPE MAINTENANCE RAMP
N.T.S



MOUNTABLE CURB SECTION

I ADDED DRIVEWAY DETAILS THG 8/14/08			
NO.	REVISION	BY	DATE
205 BYPASS PHASE 2			
MISCELLANEOUS ROADWAY DETAILS			
2 OF 2			
TCB AECOM		<small>TCB INC. WWW.TCB.AECOM.COM 17300 DALLAS PARKWAY, SUITE 1010 DALLAS, TEXAS 75248</small>	
Unit	PW-DAL-FW	Scale	AS SHOWN
Designed	TCB	Checked	TCB
Drawn	TCB	Approved	TCB
Date	11/23/2009	Project No.	60004153
Sheet	34	of	142

P:\4328\60004153\205Bypass\CADD\Sheets\Phase 2 - SH 66 To 120+00\Record Drawing 10-7-09\034PH2_MISC-RoadwayDetail1.s02.dgn 11/23/2009