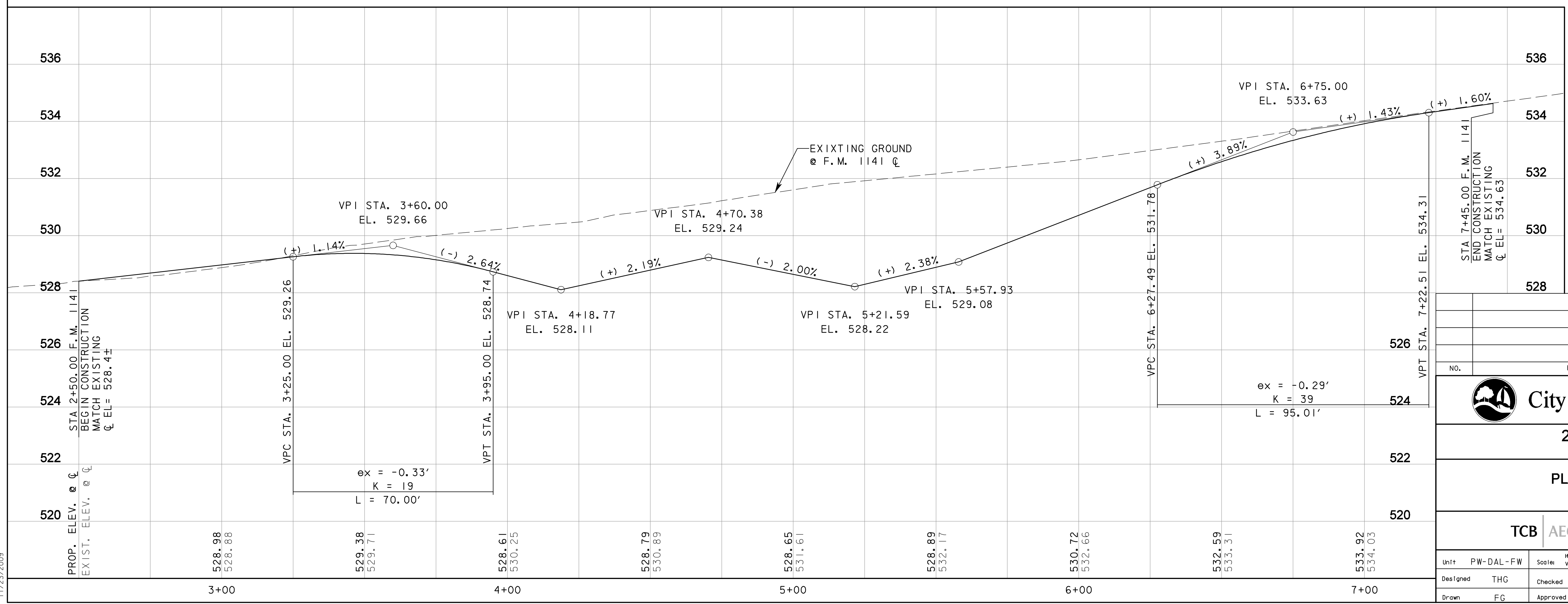
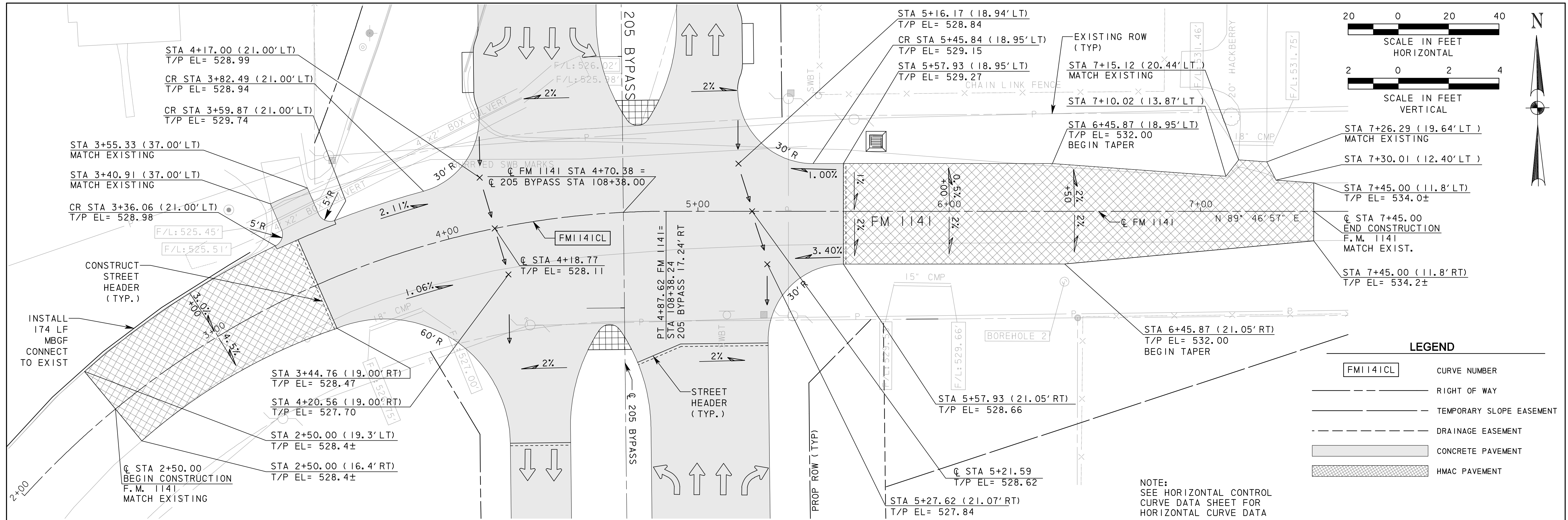


P:\4328\60004153\205Bypass\CADD\Sheets\Phase 2 - SH 66 To 120+00\Record Drawing 10.7.09\02\FM 1141-01.dgn
11/23/2009



LEGEND

- FMI 1141CL CURVE NUMBER
- RIGHT OF WAY
- - - TEMPORARY SLOPE EASEMENT
- - - DRAINAGE EASEMENT
- ▨ CONCRETE PAVEMENT
- ▩ HMAC PAVEMENT

RECORD DRAWING
This drawing is a compilation of the original sealed engineering drawing and modifications by addenda, change orders and information furnished by the contractor. Information shown that was provided by the contractor and others not associated with the design engineer cannot be verified for accuracy or completeness. Original sealed drawing is on file at the office of AECOM USA Group, Inc., TBPE REG. NO. F-3082

ORIGINAL DRAWING SEALED & SIGNED BY
T.H. Gaertner, P.E.
TX NO. 37124

| NO. | REVISION | BY | DATE |
|-----|----------|----|------|
| | | | |
| | | | |

City of Rockwall, Texas

205 BYPASS PHASE 2

PLAN & PROFILE FM 1141

TCB AECOM

TCB INC. WWW.TCB.AECOM.COM
17300 DALLAS PARKWAY, SUITE 1010
DALLAS, TEXAS 75248

| | | | | | |
|----------|-----------|----------|----------------------------------|-------------|------------|
| Unit | PW-DAL-FW | Scale | Horz: AS SHOWN Vert: AS SHOWN | Date | 11/23/2009 |
| Designed | THG | Checked | TCB | Project No. | 60004153 |
| Drawn | FG | Approved | TCB | Sheet | 27 of 142 |