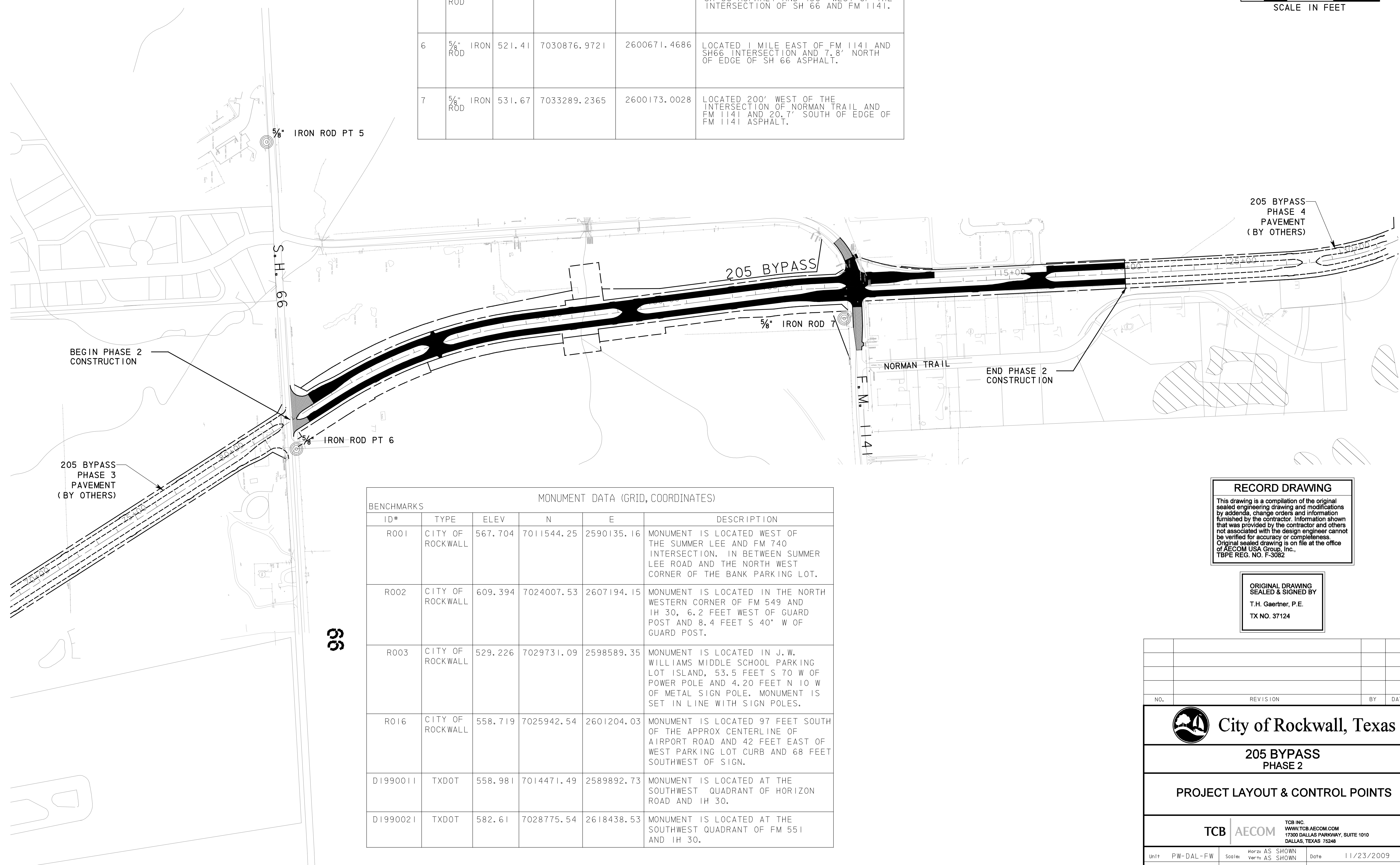
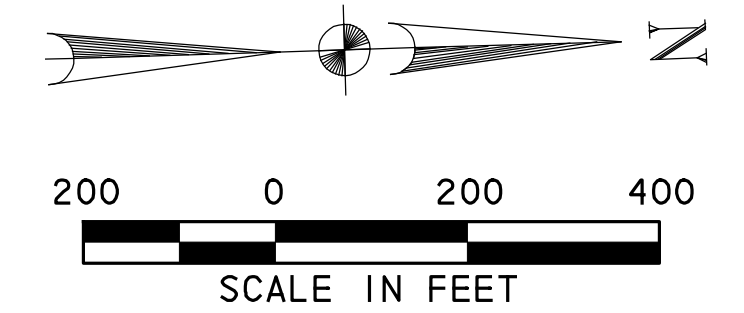


NOTE:
REFER TO HORIZONTAL LAYOUT PLANS
FOR ADDITIONAL INFORMATION.

CONTROL POINTS (SURFACE COORDINATES)					
PT#	TYPE	ELEV	N	E	DESCRIPTION
5	5/8" IRON ROD	520.84	7030793.8189	2599339.4930	LOCATED 7.3' SOUTH OF EDGE OF SH 66 ASPHALT AND 450' WEST OF THE INTERSECTION OF SH 66 AND FM 1141.
6	5/8" IRON ROD	521.41	7030876.9721	2600671.4686	LOCATED 1 MILE EAST OF FM 1141 AND SH66 INTERSECTION AND 7.8' NORTH OF EDGE OF SH 66 ASPHALT.
7	5/8" IRON ROD	531.67	7033289.2365	2600173.0028	LOCATED 200' WEST OF THE INTERSECTION OF NORMAN TRAIL AND FM 1141 AND 20.7' SOUTH OF EDGE OF FM 1141 ASPHALT.



MONUMENT DATA (GRID, COORDINATES)					
ID#	TYPE	ELEV	N	E	DESCRIPTION
R001	CITY OF ROCKWALL	567.704	7011544.25	2590135.16	MONUMENT IS LOCATED WEST OF THE SUMMER LEE AND FM 740 INTERSECTION. IN BETWEEN SUMMER LEE ROAD AND THE NORTH WEST CORNER OF THE BANK PARKING LOT.
R002	CITY OF ROCKWALL	609.394	7024007.53	2607194.15	MONUMENT IS LOCATED IN THE NORTH WESTERN CORNER OF FM 549 AND IH 30, 6.2 FEET WEST OF GUARD POST AND 8.4 FEET S 40' W OF GUARD POST.
R003	CITY OF ROCKWALL	529.226	7029731.09	2598589.35	MONUMENT IS LOCATED IN J. W. WILLIAMS MIDDLE SCHOOL PARKING LOT ISLAND, 53.5 FEET S 70 W OF POWER POLE AND 4.20 FEET N 10 W OF METAL SIGN POLE. MONUMENT IS SET IN LINE WITH SIGN POLES.
R016	CITY OF ROCKWALL	558.719	7025942.54	2601204.03	MONUMENT IS LOCATED 97 FEET SOUTH OF THE APPROX CENTERLINE OF AIRPORT ROAD AND 42 FEET EAST OF WEST PARKING LOT CURB AND 68 FEET SOUTHWEST OF SIGN.
D1990011	TXDOT	558.981	7014471.49	2589892.73	MONUMENT IS LOCATED AT THE SOUTHWEST QUADRANT OF HORIZON ROAD AND IH 30.
D1990021	TXDOT	582.61	7028775.54	2618438.53	MONUMENT IS LOCATED AT THE SOUTHWEST QUADRANT OF FM 551 AND IH 30.

RECORD DRAWING
This drawing is a compilation of the original sealed engineering drawing and modifications by addenda, change orders and information furnished by the contractor. Information shown that was provided by the contractor and others not associated with the design engineer cannot be verified for accuracy or completeness. Original sealed drawing is on file at the office of AECOM USA Group, Inc., TBPE REG. NO. F-3082

ORIGINAL DRAWING SEALED & SIGNED BY
T.H. Gaertner, P.E.
TX NO. 37124

NO.	REVISION	BY	DATE

City of Rockwall, Texas

205 BYPASS PHASE 2

PROJECT LAYOUT & CONTROL POINTS

TCB | AECOM TCB INC. WWW.TCB.AECOM.COM
17300 DALLAS PARKWAY, SUITE 1010
DALLAS, TEXAS 75248

Unit	PW-DAL-FW	Scale	Horz: AS SHOWN Vert: AS SHOWN	Date	11/23/2009
Designed	THG	Checked	TCB	Project No.	60004153
Drawn	FG	Approved	TCB	Sheet	3 of 142