

**EROSION CONTROL NOTES:**

1. EROSION CONTROL DEVICES AS SHOWN ON THE SWPPP PLAN FOR THE PROJECT SHALL BE INSTALLED PRIOR TO THE START OF LAND DISTURBING ACTIVITIES ON THE PROJECT.
2. IF THE SWPPP AS APPROVED CANNOT CONTROL EROSION AND OFF-SITE SEDIMENTATION FROM THE PROJECT, THE SWPPP WILL BE REQUIRED TO BE REVISED AND/OR ADDITIONAL EROSION CONTROL DEVICES WILL BE REQUIRED ON SITE.
3. SITE ENTRY AND EXIT LOCATIONS SHALL BE MAINTAINED IN A CONDITION WHICH WILL PREVENT TRACKING OR FLOWING OF SEDIMENT ONTO PUBLIC ROADWAYS. ALL SEDIMENT SPILLED, DROPPED, WASHED OR TRACKED ON A PUBLIC ROADWAY MUST BE REMOVED IMMEDIATELY. WHEN WASHING IS REQUIRED TO REMOVE SEDIMENT PRIOR TO ENTRANCE TO A PUBLIC ROADWAY, IT SHALL BE DONE ON AN AREA STABILIZED WITH CRUSHED STONE WHICH DRAINS INTO AN APPROVED SEDIMENT BASIN. ALL FINES IMPOSED FOR TRACKING ONTO PUBLIC ROADS SHALL BE PAID BY THE CONTRACTOR.
4. TEMPORARY SEEDING OR OTHER METHOD OF STABILIZATION SHALL BE INITIATED WITHIN 14 DAYS OF THE LAST DISTURBANCE ON ANY AREA OF THE SITE. UNLESS ADDITIONAL CONSTRUCTION ON THE AREA IS EXPECTED WITHIN 21 DAYS OF THE LAST DISTURBANCE.
5. UPON COMPLETION OF FINE GRADING, ALL AREAS NOT OTHERWISE PERMANENTLY STABILIZED SHALL BE SEEDED AND MAINTAINED UNTIL A UNIFORM COVERAGE OF 1" DEPTH (75-80%) MINIMUM DENSITY, AS DETERMINED BY THE OWNER'S REPRESENTATIVE, IS ACHIEVED.
6. ACCUMULATED SILT AT ANY EROSION CONTROL DEVICE SHALL BE REMOVED WHEN IT REACHES A DEPTH OF 6", AND SHALL BE DISTRIBUTED ON SITE IN A MANNER NOT CONTRIBUTING TO ADDITIONAL SILTATION.
7. THE CONTRACTOR IS RESPONSIBLE FOR RE-ESTABLISHING ANY EROSION CONTROL DEVICE WHICH HE DISTURBS. EACH CONTRACTOR SHALL NOTIFY THE OWNER'S REPRESENTATIVE OF ANY DEFICIENCIES IN THE ESTABLISHED EROSION CONTROL MEASURES WHICH MAY LEAD TO UNAUTHORIZED DISCHARGE OR STORM WATER POLLUTION, SEDIMENTATION OR OTHER POLLUTANTS. POTENTIAL UNAUTHORIZED POLLUTANTS INCLUDE, BUT ARE NOT LIMITED TO, EXCESS CONCRETE DUMPING OR CONCRETE RESIDUE, PAINTS, SOLVENTS, GREASES, FUEL AND LUBE OIL, PESTICIDES, ANY SOLID WASTE MATERIALS, DISTURBED SOILS AND DEBRIS FROM CLEARING OPERATIONS.
8. PERMANENT REVEGETATION IN PARKWAYS SHALL BE BY BLOCK SOD.

**STORM WATER DISCHARGE AUTHORIZATION**

1. A SIGNED CONSTRUCTION SITE NOTICE SHALL BE POSTED AT THE CONSTRUCTION SITE FOR THE DURATION OF THE CONSTRUCTION ACTIVITY.
2. A COPY OF THE SWPPP SHALL BE RETAINED ON-SITE DURING CONSTRUCTION.

**CONSTRUCTION SEQUENCE:**

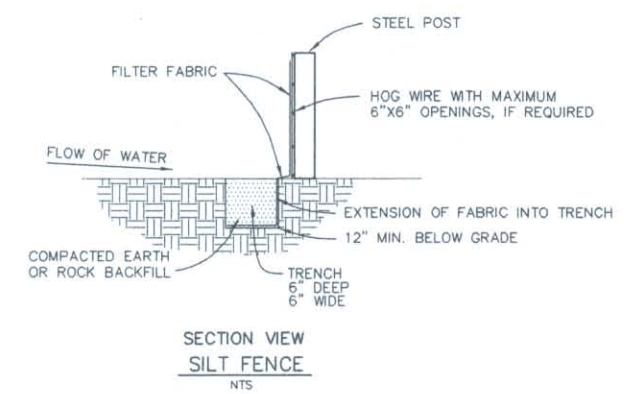
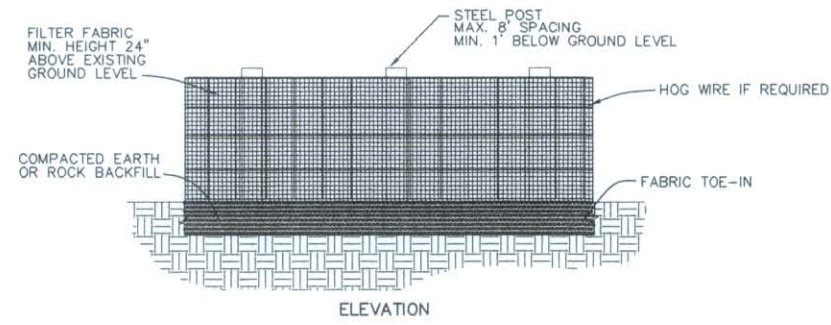
- PREPARING RIGHT-OF-WAY
- INSTALLATION OF EROSION CONTROL DEVICES
- GRADING AND PAVING
- RESTORATION CLEANUP

**GENERAL NOTES:**

1. DISTURBED AREA = 1.76 Ac
2. UNDISTURBED AREA = 0 Ac
3. TOTAL SITE AREA = 1.76 Ac
4. SEE SHEETS 5-7 FOR PROP PAVING
5. RUNOFF COEFFICIENT  
PRE-CONST. = 0.35  
POST-CONST. = 0.90

**MEASUREMENT & PAYMENT:**

NO PAYMENT WILL BE MADE FOR SWPPP. INCLUDE COST IN APPLICABLE CONSTRUCTION BID ITEM.

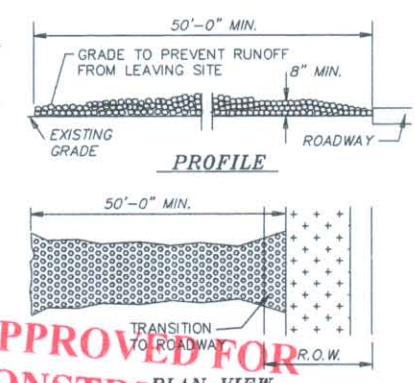


**LEGEND**

	PROPOSED SILT FENCE
	EXISTING CONTOUR
	DIRECTION OF FLOW

**GENERAL NOTES:**

1. Stone size- 3 to 5 inch open graded rock
2. Length- as effective, but not less than 50 Feet
3. Thickness- not less than 8 inches
4. Width- not less than full width of all points of ingress or egress
5. Washing- when necessary, wheels shall be cleaned to remove sediment prior to entrance onto public roadway. When washing is required, it shall be done on an area stabilized with crushed stone which drains into an approved trap or sediment basin. All sediment shall be prevented from entering any storm drain, ditch, or watercourse using approved methods.
6. Maintenance- the entrance shall be maintained in a condition which will prevent tracking or flowing of sediment onto public roadways. This may require periodic top dressing with additional stone as conditions demand, and repair and/or cleanout of any measures used to trap sediment. All sediment spilled, dropped, washed or tracked onto public roadway must be removed immediately.
7. Drainage entrance must be properly graded or incorporate a drainage swale to prevent runoff from leaving the construction site.



**APPROVED FOR CONSTRUCTION**

**STABILIZED CONSTRUCTION ENTRANCE**

SEP 14 2006

City of Rockwall Engineering Dept.  
City Engineer: \_\_\_\_\_

**BENCHMARKS:**  
1. WELL MONUMENT #N1495 IN THE NORTHWEST QUADRANT OF AIRPORT ROAD AND THE AIRPORT ENTRANCE AS DESCRIBED IN THE NATIONAL GEODETIC SURVEY ±25.6' WEST OF THE AIRPORT ENTRANCE CENTERLINE. EL = 566.73  
2. BRASS MONUMENT #R016 ON THE SOUTH SIDE OF AIRPORT ROAD LOCATED NORTHWEST OF THE CORNER OF THE CITY OF ROCKWALL BUILDING IN THE CONCRETE WALKWAY. EL = 558.68

**BENCHMARKS:**  
3. X-CUT ON THE TOP OF CURB OF THE SOUTHERN CURB RETURN OF THE SOUTH MOST ENTRANCE TO OWENS-ILLINOIS PLASTICS FROM NORTHBOUND EXISTING INDUSTRIAL BOULEVARD. EL = 564.27  
4. X-CUT ON THE TOP OF THE CURB OF THE SOUTHERN CURB RETURN OF THE 2nd ENTRANCE TO OWENS-ILLINOIS PLASTICS FROM NORTHBOUND EXISTING INDUSTRIAL BOULEVARD. EL = 568.39

NO.	REVISION	BY	DATE

DESIGNED BY : PBSJ  
DRAWN BY : PBSJ  
CHECKED BY : PBSJ  
SCALE: H:1"=60'  
DATE : JUNE 12, 2006



**PBSJ**  
18383 PRESTON ROAD ~ SUITE 500  
DALLAS, TEXAS 75252  
PH. (972) 818-7275 FAX (972) 380-2609

**STORMWATER POLLUTION PREVENTION PLAN**  
INDUSTRIAL BOULEVARD IMPROVEMENTS  
RAILROAD TO AIRPORT ROAD  
CITY OF ROCKWALL  
JUNE 2006

SHEET NO. 3  
OF 8 SHEETS  
FILE NO. 520392.00