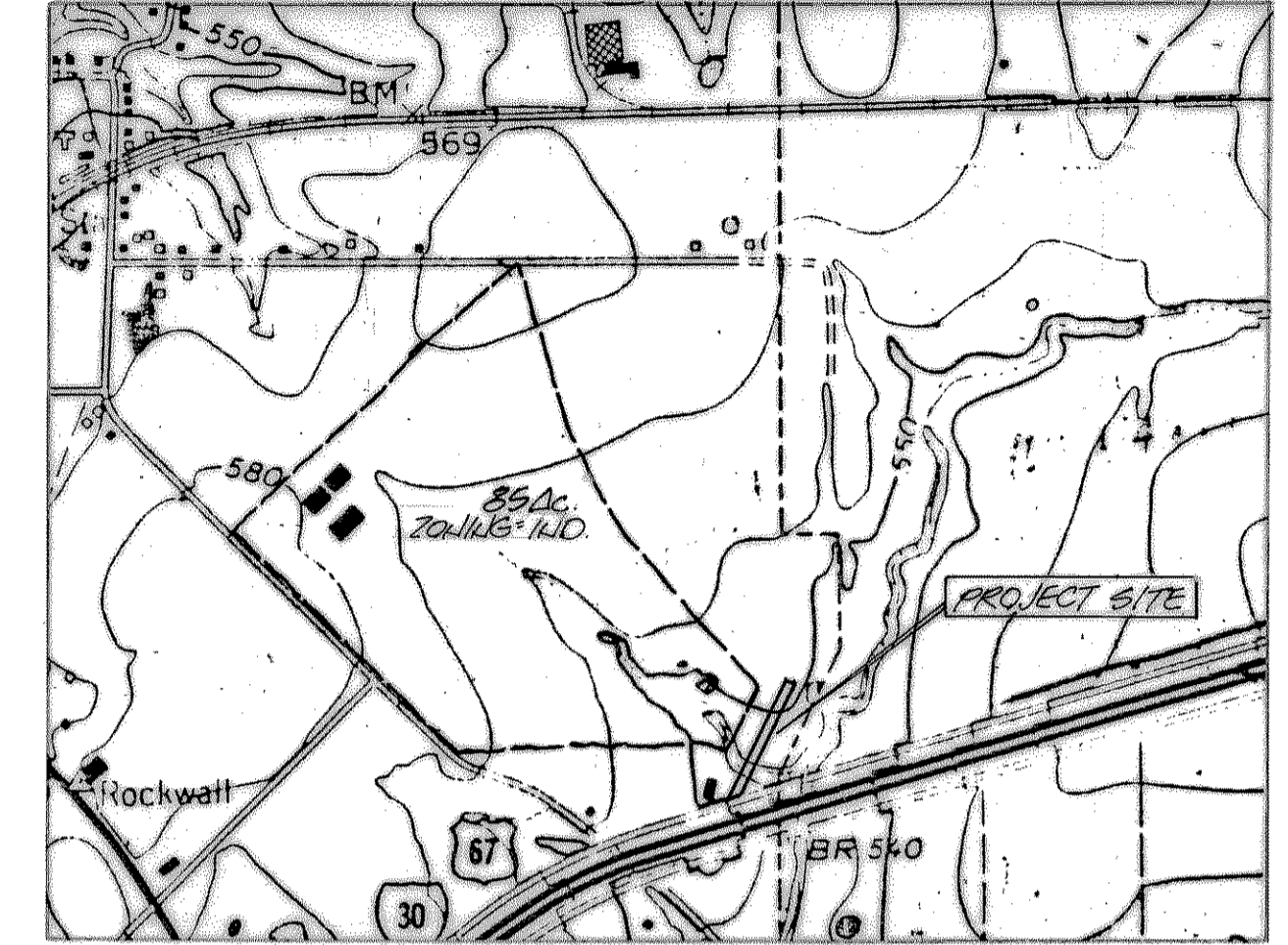
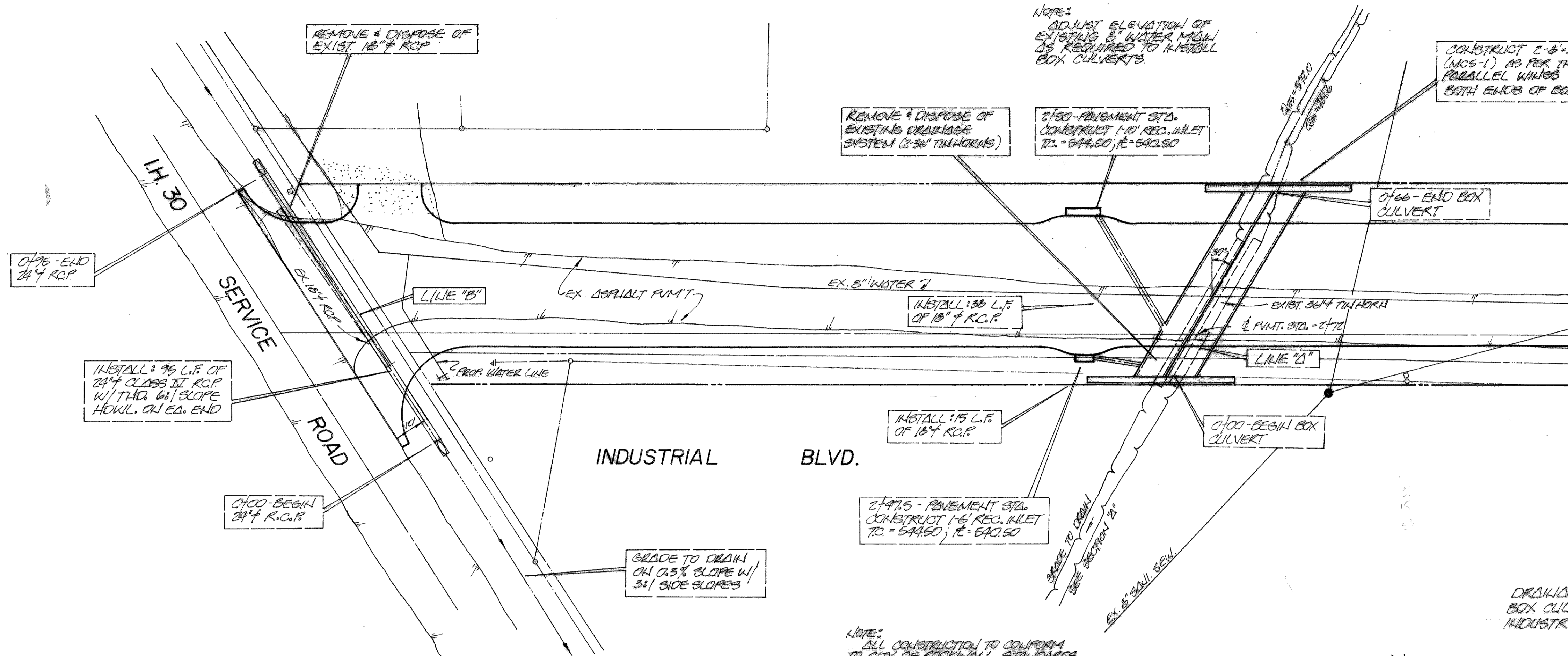
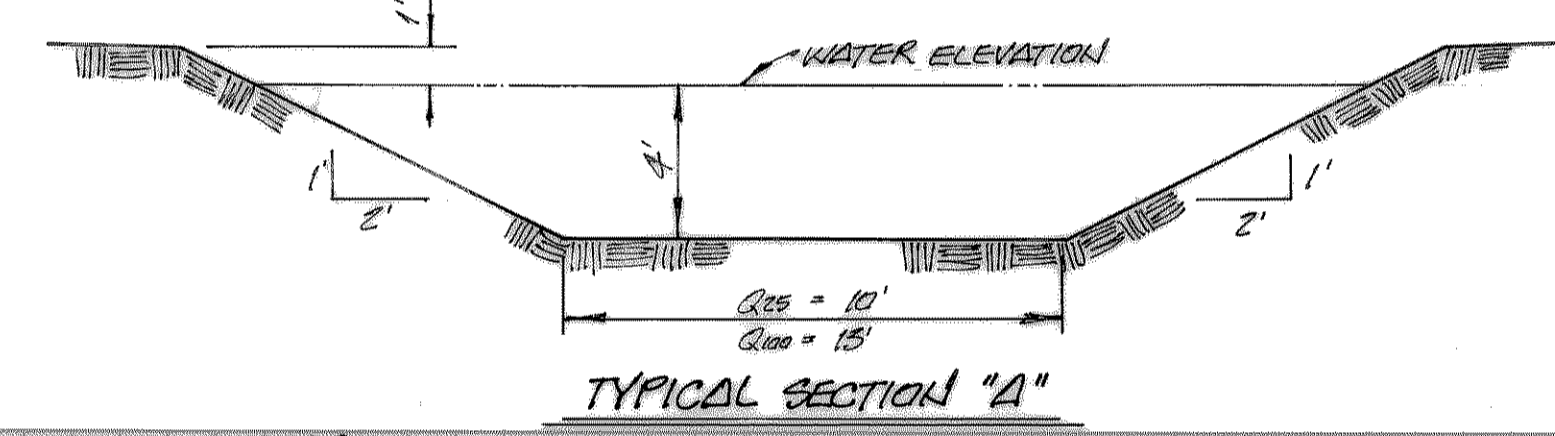


BOX CULVERT SHALL BE PRECAST GRADE 40 REINF. FOR HDG LOADING 4000 PSI CONCRETE AS PER THE SPEC'S. BOXES TO BE MANUFACTURED BY DALWORTH QUICKSET CO. OR APPROVED EQUAL.



**DRAINAGE MAP**

TC = 18.7 MIN.	D
C = 0.7	TC = 10.0 + 5 x 60
I <sub>100</sub> = 7.0	2600
I <sub>1000</sub> = 8.6	TC = 10.0 + 300 = TC = 18.7
Q <sub>100</sub> = 392.0	
Q <sub>1000</sub> = 481.2	



Q <sub>100</sub> = 392.0	Q <sub>1000</sub> = 481.2
n = 0.055	n = 0.055
S = 0.005	S = 0.005
S <sub>1/2</sub> = 0.007	S <sub>1/2</sub> = 0.007
K = 5.0	K = 5.0
Δ = 7.0	Δ = 8.0
WP = 2.18	WP = 30.8
R = 2.97	R = 2.75
R <sub>1/2</sub> = 1.87	R <sub>1/2</sub> = 1.75
V = 5.66	V = 5.86
C = 407.40	C = 491.90

NOTE: ADJUST ELEVATION OF EXISTING 8\"/>

REMOVE & DISPOSE OF EXISTING DRAINAGE SYSTEM (2\"/>

2\"/>

CONSTRUCT 2\"/>

0\"/>

INSTALL 3\"/>

0\"/>

GRADE TO DRAIN ON 0.3% SLOPE W/ 3:1 SIDE SLOPES

INSTALL 3\"/>

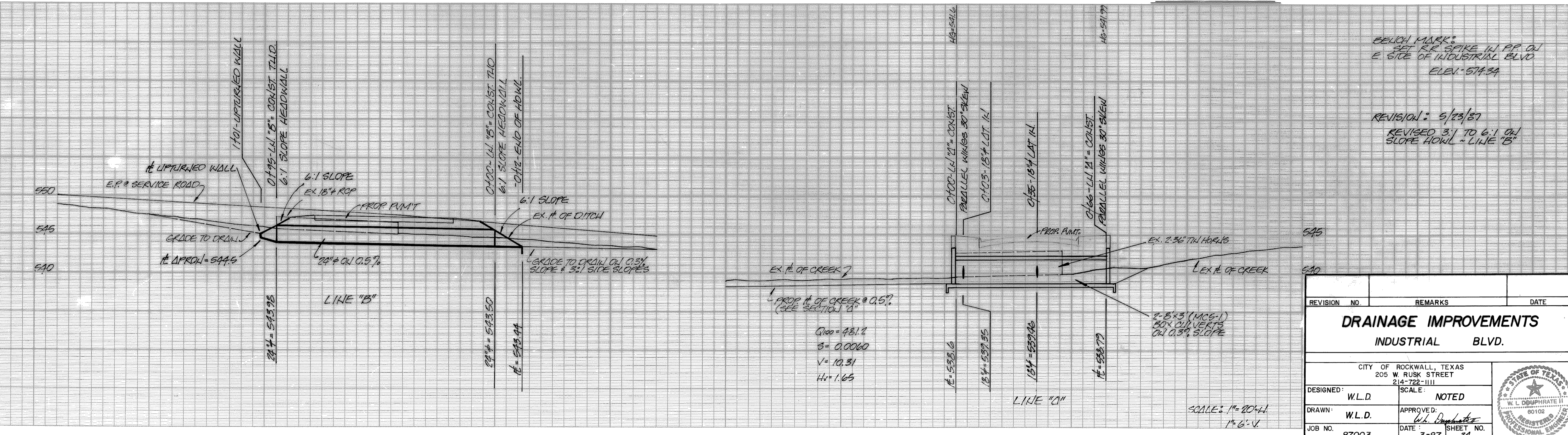
INSTALL 1\"/>

2\"/>

NOTE: ALL CONSTRUCTION TO CONFORM TO CITY OF ROCKWALL STANDARDS

NOTE: CONTRACTOR TO LOCATE & VERIFY ALL EXISTING UNDERGROUND UTILITIES PRIOR TO CONSTRUCTION.

NOTE: ALL STORM SEWER PIPE TO BE CLASS III REINFORCED CONCRETE PIPE



BENCH MARK SET RE SPIKE IN PP ON E SIDE OF INDUSTRIAL BLVD ELEV. = 574.34

REVISION: 5/23/87 REVISED 3:1 TO 6:1 ON SLOPE HOWL - LINE 'B'

REVISION NO.	REMARKS	DATE
<b>DRAINAGE IMPROVEMENTS</b>		
<b>INDUSTRIAL BLVD.</b>		
CITY OF ROCKWALL, TEXAS 205 W. RUSK STREET 214-722-1111		
DESIGNED: W.L.D.	SCALE: NOTED	
DRAWN: W.L.D.	APPROVED: <i>W.L. D.</i>	
JOB NO. 87003	DATE 3-87	SHEET NO. 34

