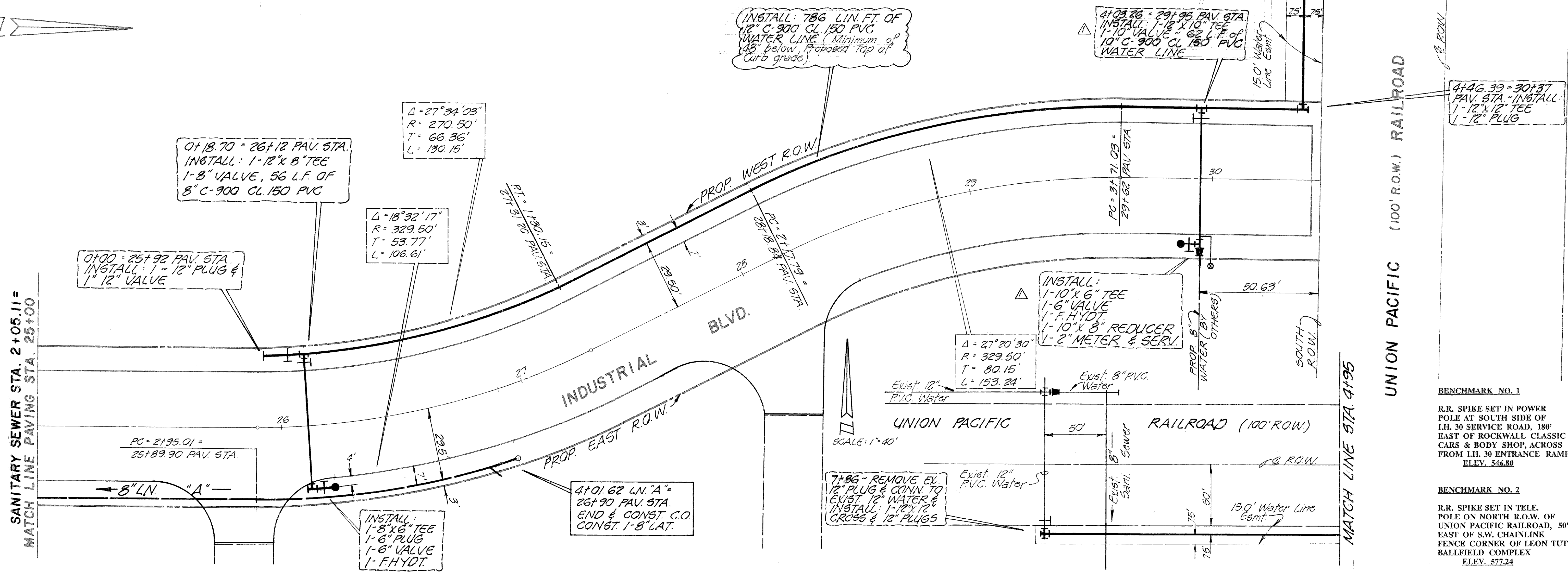
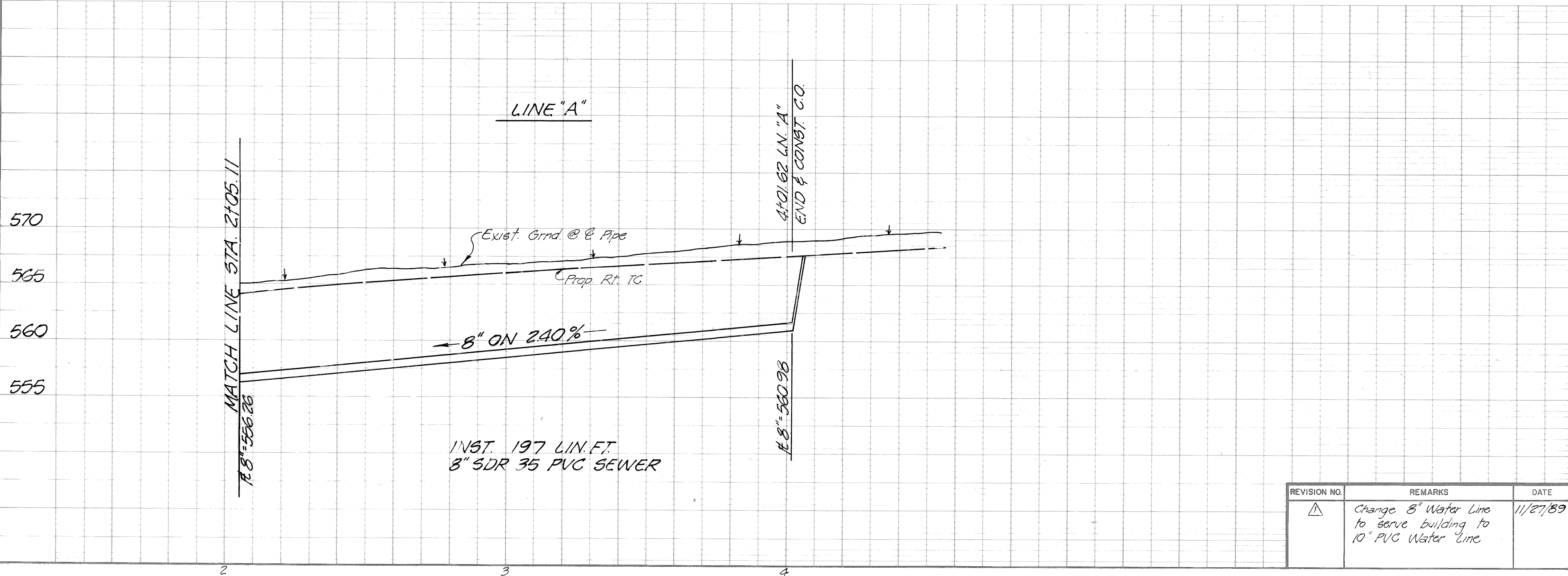


MATCH LINE STA. 4+95 (SEE BELOW)



**BENCHMARK NO. 1**  
 R.R. SPIKE SET IN POWER POLE AT SOUTH SIDE OF I.H. 30 SERVICE ROAD, 180' EAST OF ROCKWALL CLASSIC CARS & BODY SHOP, ACROSS FROM I.H. 30 ENTRANCE RAMP. ELEV. 546.80

**BENCHMARK NO. 2**  
 R.R. SPIKE SET IN TELE. POLE ON NORTH R.O.W. OF UNION PACIFIC RAILROAD, 50' EAST OF S.W. CHAINLINK FENCE CORNER OF LEON TUTTLE BALLFIELD COMPLEX. ELEV. 577.24



**WATER & SANI. SEW. IMPROVEMNTS**  
**INDUSTRIAL BOULEVARD**  
 FROM EXIST. EDGE OF PVMT. TO U.P. R.R.

**CITY OF ROCKWALL**  
 "THE NEW HORIZON"

REVISION NO.	REMARKS	DATE
1	Change 8" Water Line to serve building to 10" PVC Water Line	11/27/89

DESIGNED: B.W.H.	SCALE: 1" = 20' HOR. 1" = 5' VERT.
DRAWN: B.W.H.	APPROVED: <i>W.L. Doupprate II</i>
JOB NO:	DATE: 10/89 SHEET NO: 14 OF 19

REGISTERED PROFESSIONAL ENGINEER  
 STATE OF TEXAS  
 W.L. DOUPPRATE II  
 50102