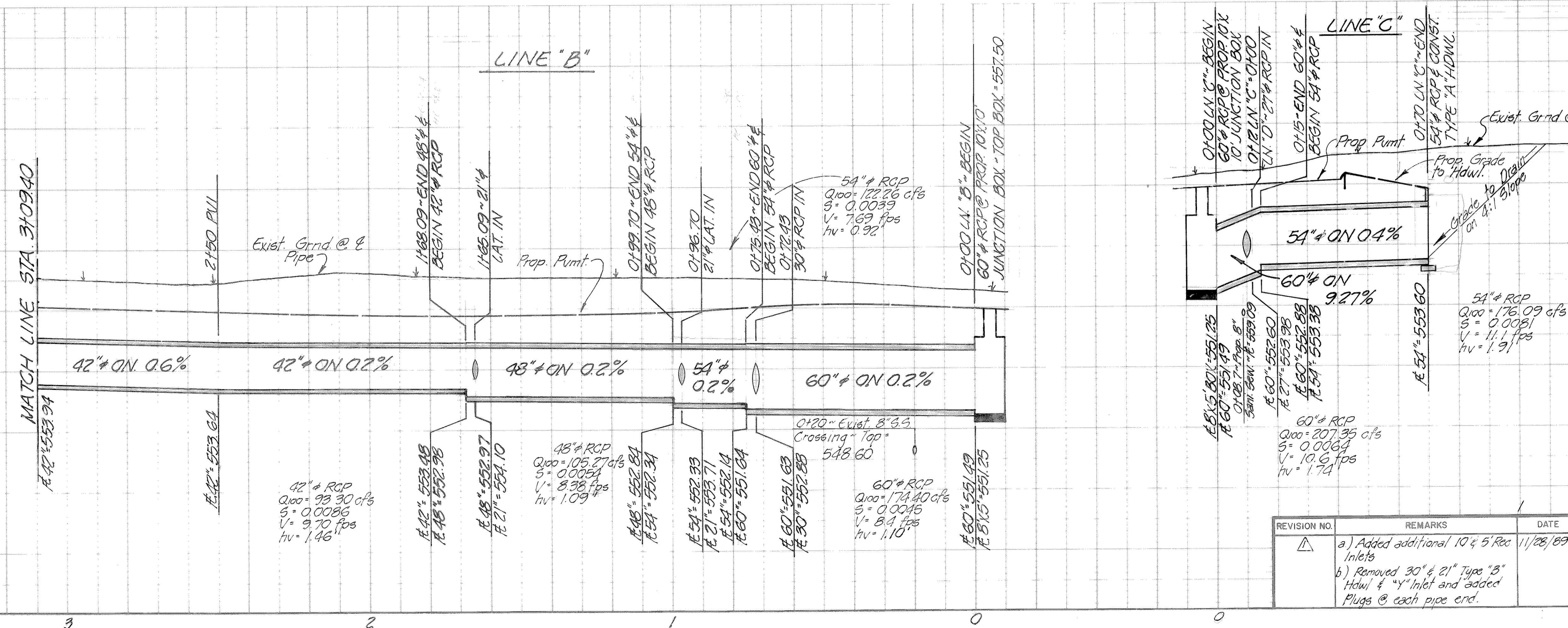


MATCH LINE PAVING STA. 3+09.40 =  
STORM SEWER STA. 3+09.40 =

MATCH LINE PAVING STA. 25+00

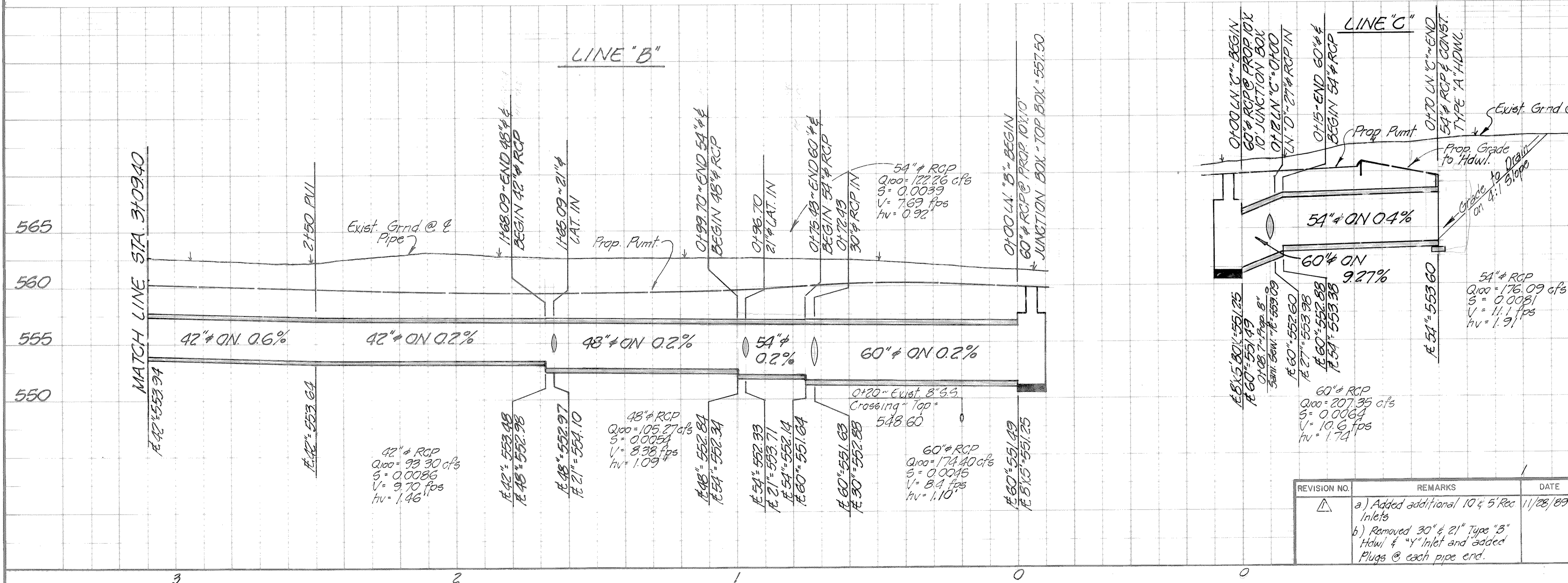
**STORM SEWER CURVE DATA**

- |  |   |
|--|---|
| 1. DELTA = 30°00'00"<br>R = 85.00'<br>T = 22.78'<br>L = 44.51'   | 2. DELTA = 30°00'00"<br>R = 120.00'<br>T = 32.15'<br>L = 62.83' |
| 3. DELTA = 36°48'14"<br>R = 285.00'<br>T = 94.82'<br>L = 183.07' | 4. DELTA = 37°00'12"<br>R = 75.00'<br>T = 25.10'<br>L = 48.44'  |



**BENCHMARK NO. 1**  
R.R. SPIKE SET IN POWER POLE AT SOUTH SIDE OF I.H. 30 SERVICE ROAD, 180' EAST OF ROCKWALL CLASSIC CARS & BODY SHOP, ACROSS FROM I.H. 30 ENTRANCE RAMP. ELEV. 546.80

**BENCHMARK NO. 2**  
R.R. SPIKE SET IN TELE. POLE ON NORTH R.O.W. OF UNION PACIFIC RAILROAD, 50' EAST OF S.W. CHAINLINK FENCE CORNER OF LEON TUTTLE BALLFIELD COMPLEX. ELEV. 577.24



**STORM SEWER**  
**INDUSTRIAL BOULEVARD**  
FROM EXIST. EDGE OF PVMT. TO U.P. R.R.

**CITY OF ROCKWALL**  
"THE NEW HORIZON"

REVISION NO.	REMARKS	DATE
1	a) Added additional 10' x 5' Rec Inlets b) Removed 30" & 21" Type "B" Hwyl & "Y" Inlet and added Plugs @ each pipe end.	11/28/89

DESIGNED: B.W.H.	SCALE: 1" = 20' HOR. 1" = 5' VERT.
DRAWN: B.W.H.	APPROVED: <i>W. Don...</i>
JOB NO:	DATE: 10/89 SHEET NO: 11 OF 19