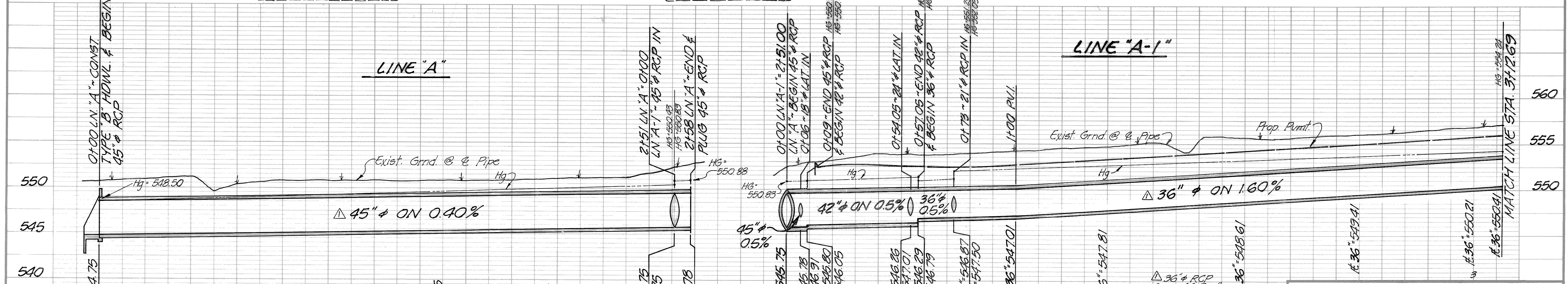
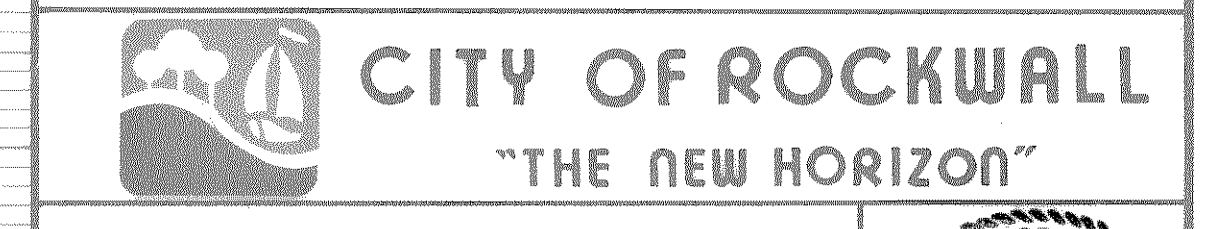


**BENCHMARK NO. 1**  
 R.R. SPIKE SET IN POWER POLE AT SOUTH SIDE OF I.H. 30 SERVICE ROAD, 180' EAST OF ROCKWALL CLASSIC CARS & BODY SHOP, ACROSS FROM I.H. 30 ENTRANCE RAMP. ELEV. 546.80

**BENCHMARK NO. 2**  
 R.R. SPIKE SET IN TELE. POLE ON NORTH R.O.W. OF UNION PACIFIC RAILROAD, 50' EAST OF S.W. CHAINLINK FENCE CORNER OF LEON TUTTLE BALLFIELD COMPLEX. ELEV. 577.24



**STORM SEWER**  
**INDUSTRIAL BOULEVARD**  
 FROM EXIST. END OF PVMT. TO U.P. R.R. R.O.W.



REVISION NO.	REMARKS	DATE
1	a. Changed 33" RCP to 36" RCP b. Changed alignment and linear footage of 45" RCP from 282 L.F. to 267 L.F. c. Added profile for Line "A"	10/30/89

DESIGNED: B.W.H. SCALE: 1" = 20' HOR. 1" = 5' VERT.  
 DRAWN: B.W.H. APPROVED: [Signature]  
 JOB NO: DATE: 10/89 SHEET NO: 8 OF 19

