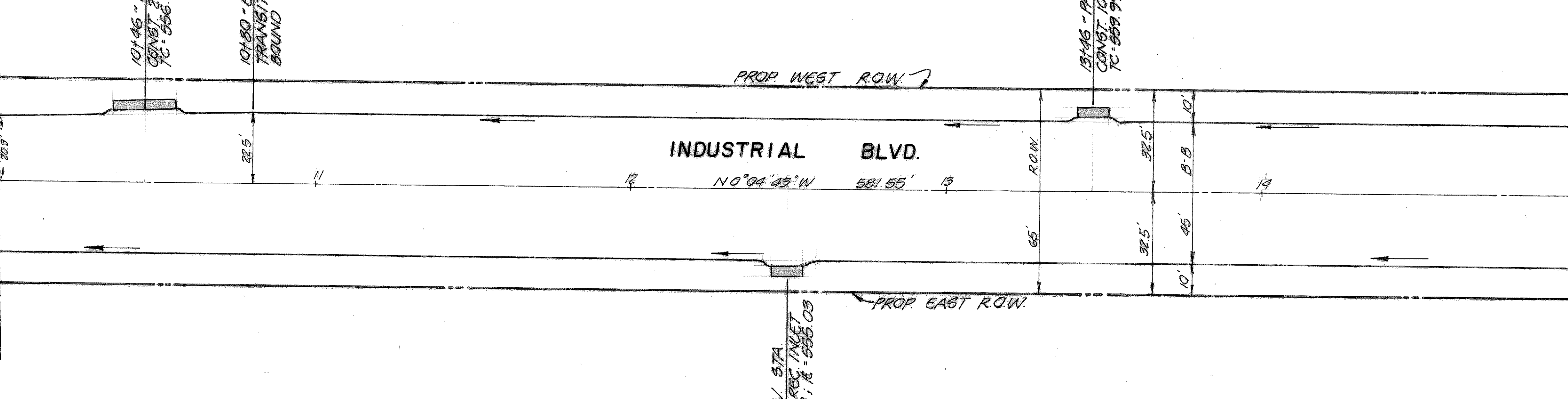




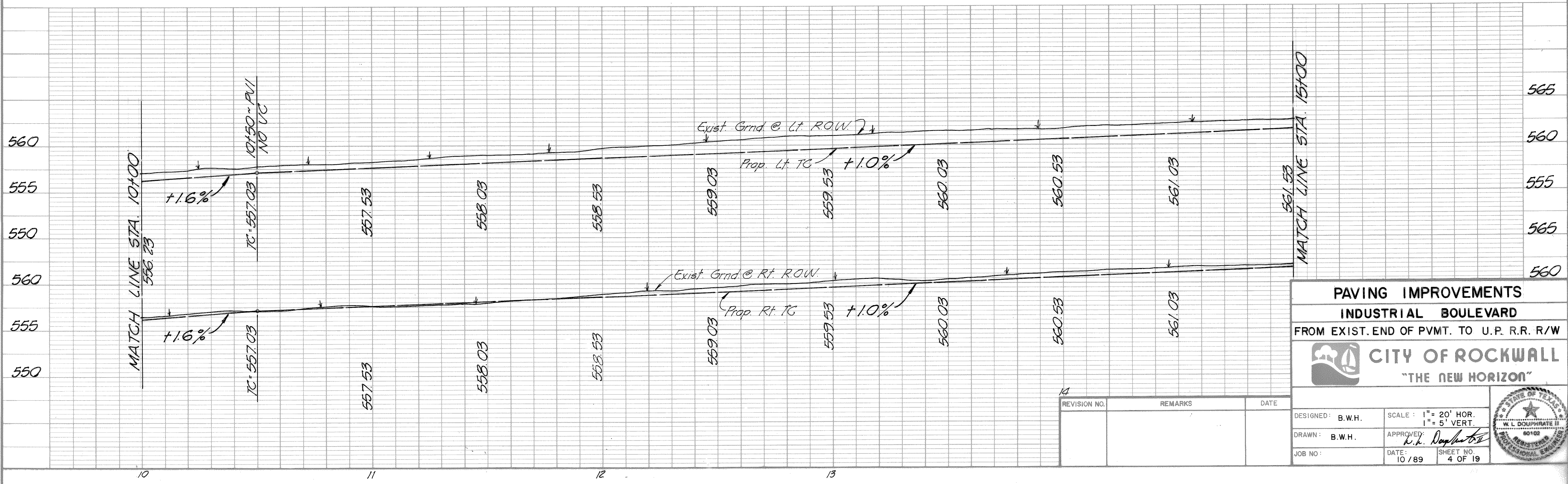
MATCH LINE PAVING STA. 10+00



MATCH LINE PAVING STA. 15+00

**BENCHMARK NO. 1**  
 R.R. SPIKE SET IN POWER POLE AT SOUTH SIDE OF I.H. 30 SERVICE ROAD, 180' EAST OF ROCKWALL CLASSIC CARS & BODY SHOP, ACROSS FROM I.H. 30 ENTRANCE RAMP.  
 ELEV. 546.80

**BENCHMARK NO. 2**  
 R.R. SPIKE SET IN TELE. POLE ON NORTH R.O.W. OF UNION PACIFIC RAILROAD, 50' EAST OF S.W. CHAINLINK FENCE CORNER OF LEON TUTTLE BALLFIELD COMPLEX  
 ELEV. 577.24



MATCH LINE STA. 15+00

<b>PAVING IMPROVEMENTS</b>		
<b>INDUSTRIAL BOULEVARD</b>		
FROM EXIST. END OF PVMT. TO U.P. R.R. R/W		
<b>CITY OF ROCKWALL</b> "THE NEW HORIZON"		
DESIGNED: B.W.H.	SCALE: 1" = 20' HOR. 1" = 5' VERT.	
DRAWN: B.W.H.	APPROVED: <i>W.L. Dougherty II</i>	
JOB NO:	DATE: 10/89	
	SHEET NO: 4 OF 19	

REVISION NO.	REMARKS	DATE
14		