

MATCH LINE STA. 18+00

MATCH LINE STA. 27+00

CAUTION
UNDERGROUND GAS & TELEPHONE
LINE IN PROJECT AREA

STA. 19+29
FURNISH & INSTALL
1 - 1" SERVICE TAP
18 LF 1" SERVICE LINE
CONNECT TO EXIST. WM

STA. 19+90
FURNISH & INSTALL
1 - FIRE HYDRANT

STA. 20+00
FURNISH & INSTALL
1 - 16" BUTTERFLY VALVE

P.I. STA. 22+35.97
7.07° RIGHT
N: 7023117.0877
E: 2601856.9086

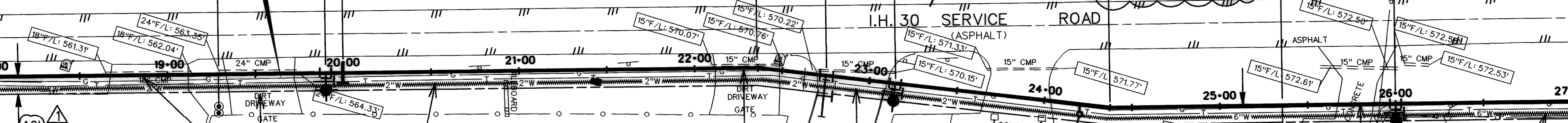
STA. 22+75
FURNISH & INSTALL
1 - 16" X 8" MJ TEE
1 - 8" GATE VALVE
1 - 8" PLUG
20 LF 8" PVC WL

STA. 24+20.32, 63.49' LEFT
BASELINE TRP NO. 4
SET 5/8" IRON ROD WITH CAP
N = 7023211.9800
E = 2602027.2300
ELEV = 572.85

P.I. STA. 24+37.53
7.07° LEFT
N: 7023152.5012
E: 2602055.3293

STA. 25+35
FURNISH & INSTALL
1 - 1" SERVICE TAP
17 LF - 1" SERVICE LINE
CONNECT TO EXIST. WM

STA. 26+00
FURNISH & INSTALL
1 - FIRE HYDRANT



A.Q.M.
(AIR QUALITY MANAGEMENT)

STA. 18+90 & 19+52
REMOVE 1 - 18" & 1 - 24" CMP
CULVERT FOR INSTALLATION OF
PROP 16" WL
FURNISH & INSTALL
1 - 115 LF 24" CGMP CULVERT
W/2 TxDOT TYPE II PREFABRICATED
GALVANIZED STEEL SAFETY END
TREATMENTS MATCH EXIST. DITCH
FLOWLINES BACKFILL AREA
BETWEEN EXIST. DRIVEWAYS AT
STA. 18+90 & STA. 19+52 TO MATCH
EXIST. GRADE

4-SEASONS RV
(SALES & SERVICE)

STA. 22+30
REMOVE EXIST. 15" CMP CULVERT
FOR INSTALLATION OF
PROP 16" WL
FURNISH & INSTALL
45 LF 18" CGMP CULVERT W/2
TxDOT TYPE II PREFABRICATED
GALVANIZED STEEL SAFETY END
TREATMENTS MATCH EXIST. DITCH
FLOWLINES

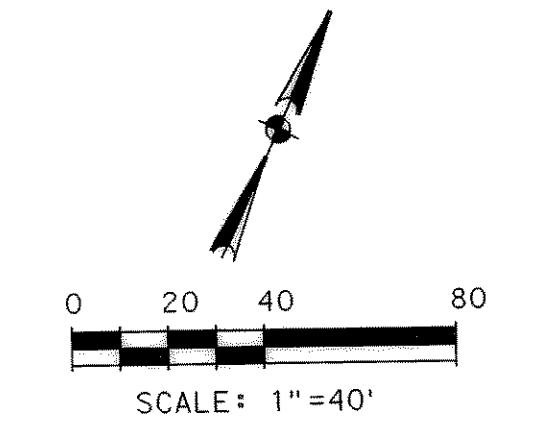
SEE SHEET 31 FOR DETAIL

CHURCH
OF CHRIST

WATER LINE
PLACED
4'-6" FROM
CONCRETE
COLUMNS
5'-6" DEEP
TO BOTTOM

PROPOSED 16" WATER LINE

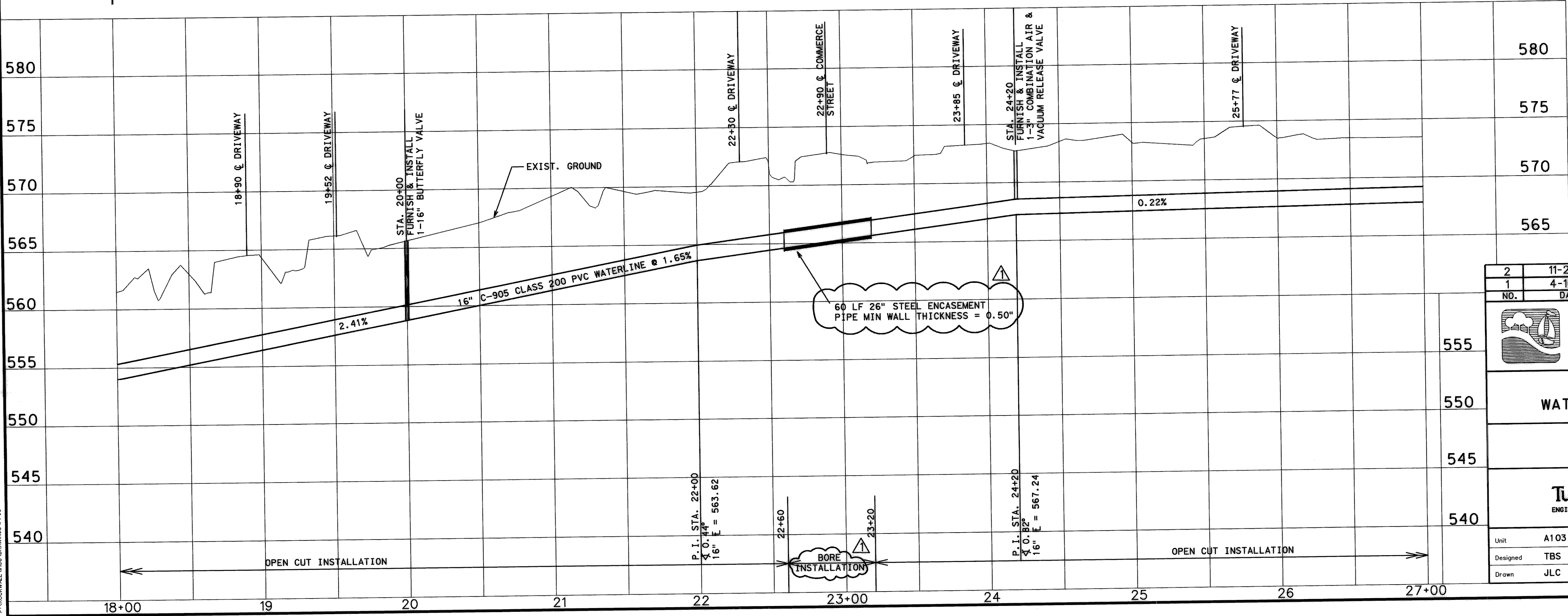
BORE & ENCASE PROP. 16"
WATER LINE UNDER COMMERCE ST.



| LEGEND | |
|--------|----------------------------|
| | POWER POLE |
| | GUY WIRE |
| | TELEPHONE BOX |
| | POST |
| | SIGN |
| | IRON ROD |
| | FIRE HYDRANT |
| | WATER METER |
| | MAILBOX |
| | WATER METER |
| | IRRIGATION CONTROL VALVE |
| | GUARD RAIL |
| | GAS METER |
| | GROUND LIGHT |
| | CHAIN LINK FENCE |
| | WOOD FENCE |
| | ASH TREE |
| | OAK TREE |
| | CEDAR TREE |
| | BARBED WIRE FENCE |
| | REFLECTOR |
| | APPROXIMATE TELEPHONE LINE |
| | APPROXIMATE GAS LINE |
| | APPROXIMATE WATER LINE |
| | OVERHEAD POWER LINE |
| | PINE TREE |
| | PECAN TREE |

RECORD DRAWING
BY *Marique Simon*
DATE 3-6-02

UNDERGROUND UTILITIES
THE LOCATION OF EXISTING UTILITIES SHOWN ON THESE PLANS ARE APPROXIMATE AND BASED ON DATA FURNISHED BY UTILITY COMPANIES. IT IS THE RESPONSIBILITY OF THE CONTRACTOR TO LOCATE AND VERIFY ON-SITE THE UTILITIES THAT MAY CONFLICT WITH THE CONSTRUCTION.



| | | | |
|-----|----------|----------------|--------|
| 2 | 11-27-01 | RECORD DRAWING | TBS |
| 1 | 4-16-99 | REALIGNMENT | TBS |
| NO. | DATE | REVISION | APPROV |

CITY OF ROCKWALL
"THE NEW HORIZON"

I.H. 30 AND FM 549
WATER LINE IMPROVEMENTS

UTILITY PLAN AND PROFILE
16" PVC WATER LINE
STA. 18+00 TO STA. 27+00

Turner Collie & Braden Inc.
ENGINEERS • PLANNERS • PROJECT MANAGERS

| | | | | |
|----------|------|-------------------------------------|------|----------------------|
| Unit | A103 | Scale: Horiz. 1"=40' Vert. 1"=5' | Date | FEBRUARY, 1999 |
| Designed | TBS | Checked | DWN | Job No. 15-98925-200 |
| Drawn | JLC | Approved | RCR | SHEET 5 OF 33 |

P:\ROCKWALL\LAND\CONTRACTS\1999