

REMOVE EXIST. 8" WATER METER. RELOCATE METER TO NORTH SIDE OF SH- 276 APPROXIMATELY 2680 LF EAST OF CL FM- 549. REMOVE EXIST. METER VAULT & DELIVER SALVAGEABLE PARTS TO CITY OF ROCKWALL PUBLIC WORKS YARD. COORDINATE REMOVAL AND RELOCATION OF WATER METER WITH CITY OF ROCKWALL

SEE DETAIL B THIS SHEET

ALL SERVICE CONNECTIONS TO EXIST. 6" WATER LINE ON NORTH SIDE OF SH- 276 FROM BLACKLAND WATER SUPPLY 12" FEED LINE TO FM-549 ARE TO BE REMOVED AND RECONNECTED TO EXIST. 10" WATER LINE. (APPROXIMATELY 8 - 1" SERVICE CONNECTIONS)
ALL FIRE HYDRANTS CONNECTED TO EXIST. 6" WATER LINE ON NORTH SIDE OF SH- 276 FROM BLACKLAND WATER SUPPLY 12" FEED LINE TO FM-549 ARE TO BE REMOVED AND RECONNECTED TO EXIST. 10" WATER LINE.

EXISTING 6" WATERLINE TO REMAIN IN SERVICE

INSTALL 1 - 10" X 8" TAPPING SLEEVE AND VALVE ON EXIST. 10" WATER LINE ON NORTH SIDE OF SH 276. 2240' EAST OF CL FM 549 AT INTERSECTION OF SH 276 AND SILVER VIEW LANE. DISCONNECT 8" WATER LINE ON SILVER VIEW LANE FROM EXIST. 6" WATER LINE ON NORTH SIDE OF SH 276 AND CONNECT TO EXIST. 10" WATER LINE ON NORTH SIDE OF SH 276.

NOTE: INSTALL 8" WATER METER AND VAULT ON EXISTING 12" WATERLINE. SEE SHEET 28 FOR WATER METER AND VAULT DETAIL

INSTALL: 1 - 12" X 12" TEE ON EXISTING 12" WATERLINE.

INSTALL: 92 LF OF 12" WATERLINE.

EXISTING 6" WATERLINE TO REMAIN IN SERVICE

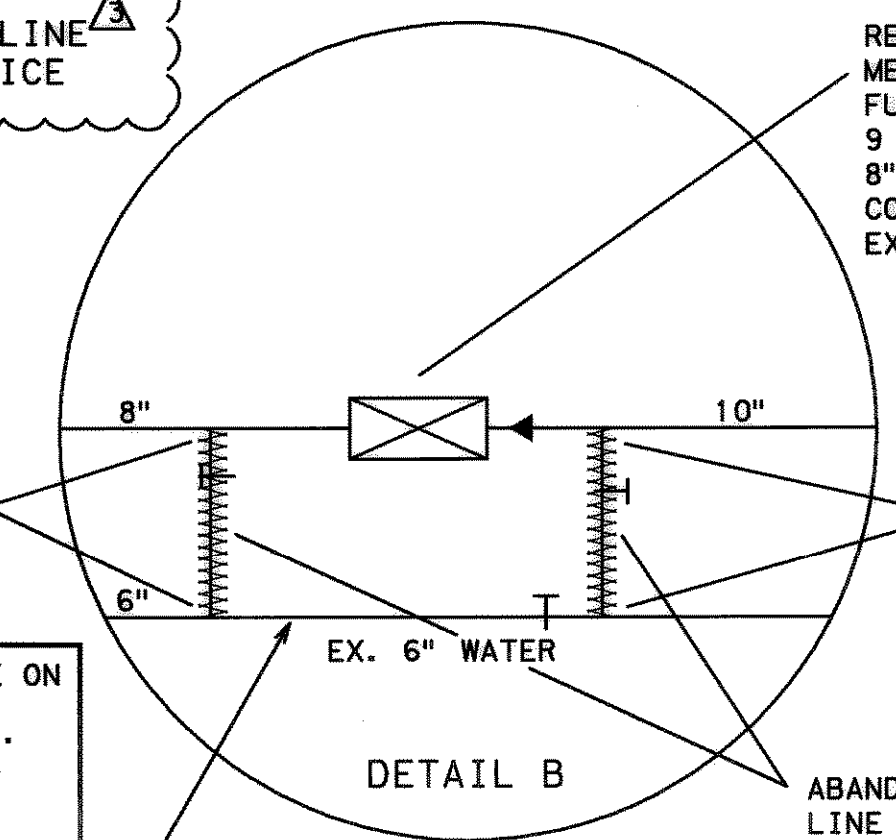
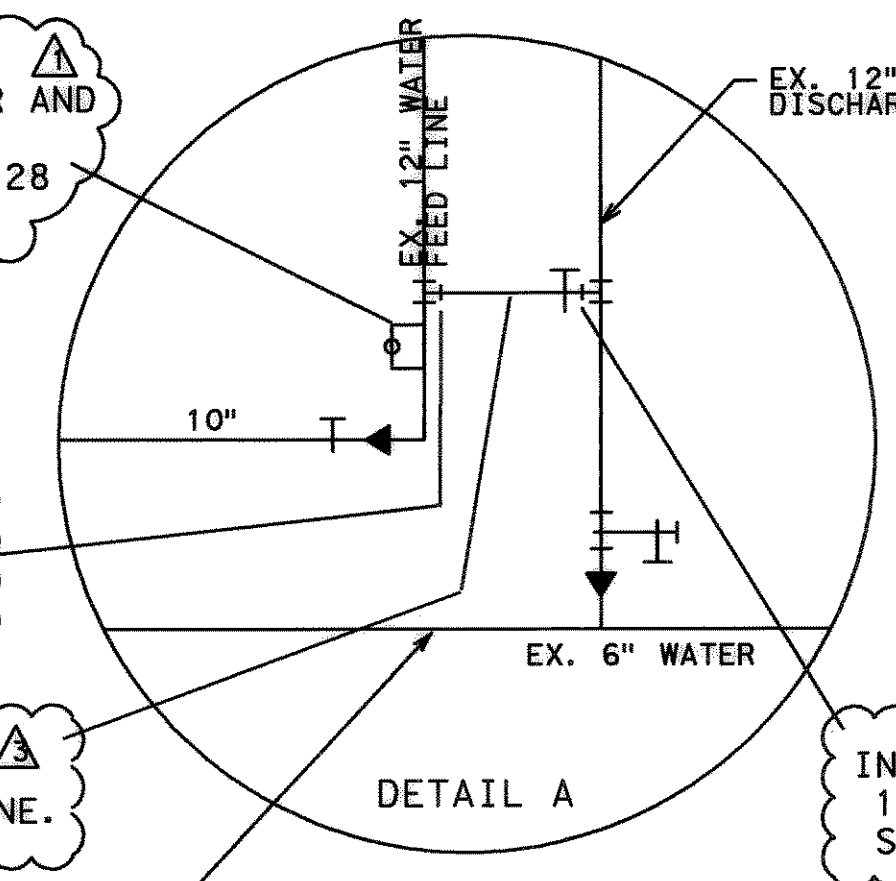
CUT & PLUG EXIST. 6" WATER LINE.

EXISTING 6" WATERLINE TO REMAIN IN SERVICE

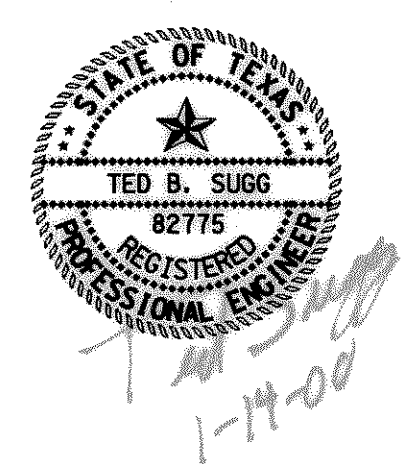
INSTALL: 1 - 12" X 12" TAPPING SLEEVE AND VALVE.

REMOVE EXIST 8" WATER METER & VAULT. FURNISH & INSTALL 9 LF 8" PVC WATER LINE. 8" FLG X 10" FLG REDUCER CONNECT EXIST. 8" PVC TO EXIST. 10" PVC.

ABANDON EXIST. 6" WATER LINE IN PLACE



RECORD DRAWING
BY *Doranique Lima*
DATE *3-6-02*



| | | | |
|-----|---------|---------------------------------|--------|
| 3 | 1-14-00 | ADDED BYPASS & DELETED 6" METER | TBS |
| 2 | 5-19-99 | RELOCATE WATER METER | TBS |
| 1 | 4-16-99 | REALIGNMENT | TBS |
| NO. | DATE | REVISION | APPROV |

CITY OF ROCKWALL
"THE NEW HORIZON"

I.H. 30 AND FM 549
WATER LINE IMPROVEMENTS

WATER METER LOCATIONS

Turner Collie & Braden Inc.
ENGINEERS • PLANNERS • PROJECT MANAGERS

| | | |
|---------------|---------------|----------------------|
| A103 | Scale: NTS | Date: FEBRUARY, 1999 |
| Designed: TBS | Checked: DWN | Job No. 15-98925-200 |
| Drawn: JLC | Approved: RCR | SHEET 26 OF 33 |

P:\ROCKWALL\14 30\DRAWINGS\METER_LOCATIONS-ALL.DGN