

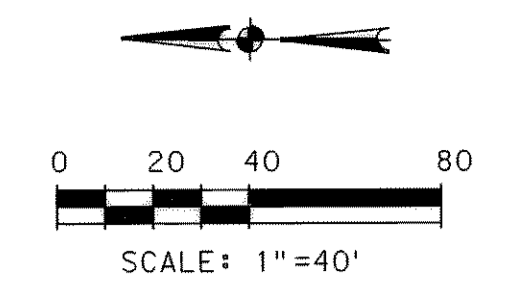
BENCHMARK  
PERMANENT CITY OF ROCKWALL MONUMENT  
LOCATED AT THE NORTHWEST CORNER OF  
THE I-30 NORTH SERVICE ROAD AND  
FM-549 NEAR THE OVERPASS  
N. = 7024007.7454  
E. = 2607195.1403  
ELEV. = 609.50

!!! CAUTION !!!  
UNDERGROUND FIBER OPTICS  
LINE IN PROJECT AREA

P.I. STA. 80+00.00  
FURNISH & INSTALL  
1 - 16" - 45° MJ BEND  
1 - 16" - 11 1/4° MJ BEND  
N. = 7021121.3333  
E. = 2607693.2333

SEE DETAIL SHEET 24  
COORDINATE LOCATION  
OF 6" WATER METER  
AND VAULT WITH  
CITY OF ROCKWALL

STA. 88+75.00 LT  
FURNISH & INSTALL  
1 - 12" MJ X FLG GATE VALVE  
1 - 12" X 6" FLG REDUCER  
1 - 6" WATER METER AND VAULT  
1 - 6" 90° BEND  
3 - 6" MJ X FLG GATE VALVES  
1 - 6" X 6" TEE  
CONNECT TO EXIST. 6" WL



P.I. STA. 81+90.77  
Δ = 53.22° RT.  
FURNISH & INSTALL  
1 - 16" - 45° MJ BEND  
1 - 16" - 11 1/4° MJ BEND  
N. = 7024839.7791  
E. = 2607545.5696

STA. 81+90  
FURNISH & INSTALL  
1 - 3" COMBINATION AIR AND  
VACUUM RELEASE VALVE

STA 83+00  
FURNISH & INSTALL  
1 - FIRE HYDRANT

STA 84+00  
FURNISH & INSTALL  
1 - FIRE HYDRANT

STA. 86+75  
FURNISH & INSTALL  
1 - 16" FLG X MJ BUTTERFLY VALVE  
1 - 16" X 12" FLG TEE  
1 - 16" X 12" FLG REDUCER  
2 - FLG & MJ 12" GATE VALVE.

STA 88+00  
FURNISH & INSTALL  
1 - FIRE HYDRANT

P.I. STA. 81+76.34  
Δ = 53.22° RT.  
FURNISH & INSTALL  
1 - 16" - 45° MJ BEND  
1 - 16" - 11 1/4° MJ BEND  
N. = 7024848.2688  
E. = 2607533.9055

MATCH LINE STA. 81+00

ABANDON EXIST. 6"  
WATERLINE IN PLACE

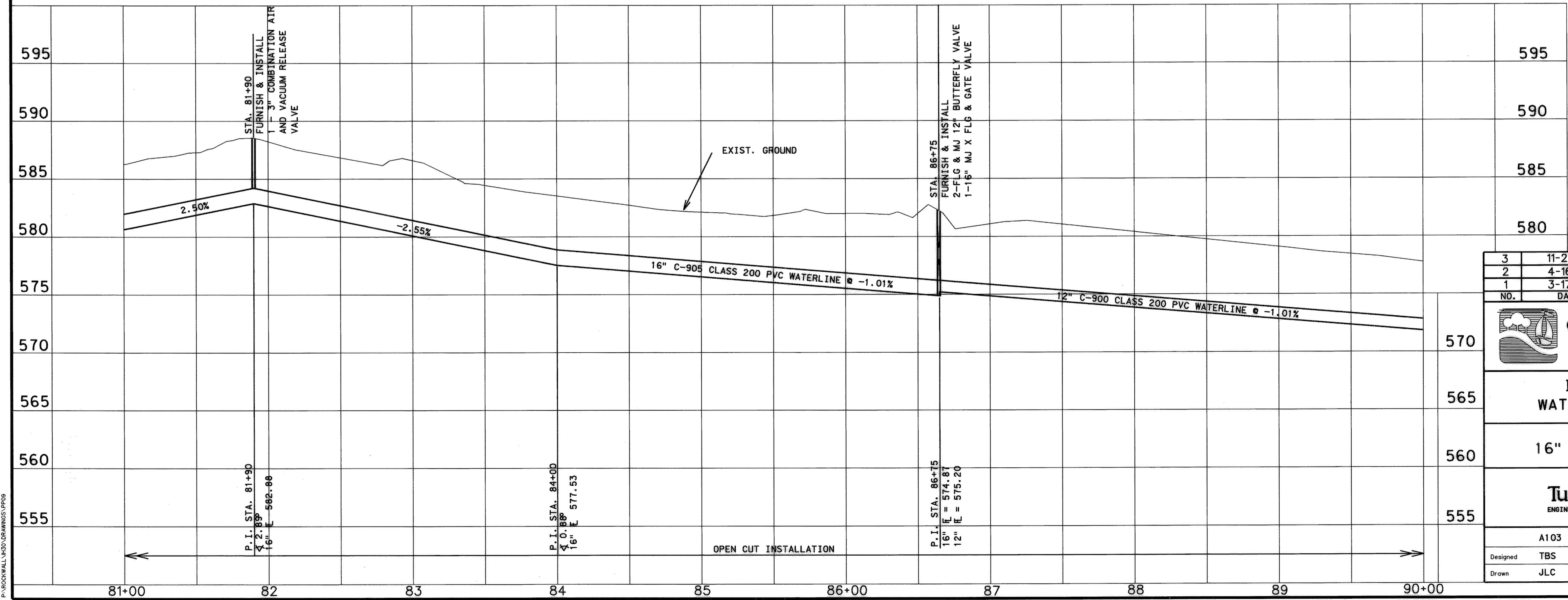
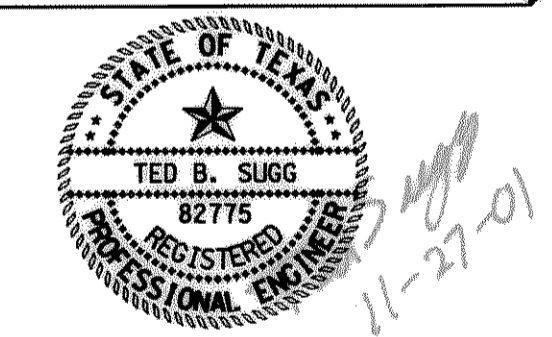
P.I. STA. 85+39.74  
FURNISH & INSTALL  
1 - 16" - 45° MJ BEND  
1 - 16" - 11 1/4° MJ BEND  
N. = 7024490.8231  
E. = 2607549.1358

REMOVE EXIST.  
WATER METER & VAULT.  
WATER METER TO BE  
RELOCATED TO STA. 86+75.88,25' LT.

RECORD DRAWING  
DATE 3-6-02

| LEGEND |                            |
|--------|----------------------------|
|        | POWER POLE                 |
|        | GUY WIRE                   |
|        | TELEPHONE BOX              |
|        | POST                       |
|        | SIGN                       |
|        | IRON ROD                   |
|        | FIRE HYDRANT               |
|        | WATER METER                |
|        | MAILBOX                    |
|        | WATER METER                |
|        | IRRIGATION CONTROL VALVE   |
|        | GUARD RAIL                 |
|        | GAS METER                  |
|        | GROUND LIGHT               |
|        | CHAIN LINK FENCE           |
|        | WOOD FENCE                 |
|        | ASH TREE                   |
|        | OAK TREE                   |
|        | CEDAR TREE                 |
|        | BARBED WIRE FENCE          |
|        | REFLECTOR                  |
|        | APPROXIMATE TELEPHONE LINE |
|        | APPROXIMATE GAS LINE       |
|        | APPROXIMATE WATER LINE     |
|        | OVERHEAD POWER LINE        |
|        | PINE TREE                  |
|        | PECAN TREE                 |

**UNDERGROUND UTILITIES**  
THE LOCATION OF EXISTING UTILITIES  
SHOWN ON THESE PLANS ARE APPROX-  
IMATE AND BASED ON DATA FURNISHED  
BY UTILITY COMPANIES. IT IS THE  
RESPONSIBILITY OF THE CONTRACTOR  
TO LOCATE AND VERIFY ON-SITE THE  
UTILITIES THAT MAY CONFLICT  
WITH THE CONSTRUCTION.



| NO. | DATE     | REVISION              | APPROV |
|-----|----------|-----------------------|--------|
| 3   | 11-27-01 | RECORD DRAWING        | TBS    |
| 2   | 4-16-99  | CENTERLINE STATIONING | TBS    |
| 1   | 3-17-99  | REALIGNMENT           | TBS    |

**CITY OF ROCKWALL**  
"THE NEW HORIZON"

I.H. 30 AND FM 549  
WATER LINE IMPROVEMENTS

UTILITY PLAN AND PROFILE  
16" & 12" PVC WATER LINE  
STA. 81+00 TO STA. 90+00

**TurnerCollie & Braden Inc.**  
ENGINEERS • PLANNERS • PROJECT MANAGERS

|              |                                     |         |                |
|--------------|-------------------------------------|---------|----------------|
| A103         | Scale: Horiz. 1"=40'<br>Vert. 1"=5' | Date    | FEBRUARY, 1999 |
| Designed TBS | Checked DWN                         | Job No. | 15-98925-200   |
| Drawn JLC    | Approved RCR                        |         | SHEET 12 OF 33 |

P:\ROCKWALL\IHD\DR\W\15\1009