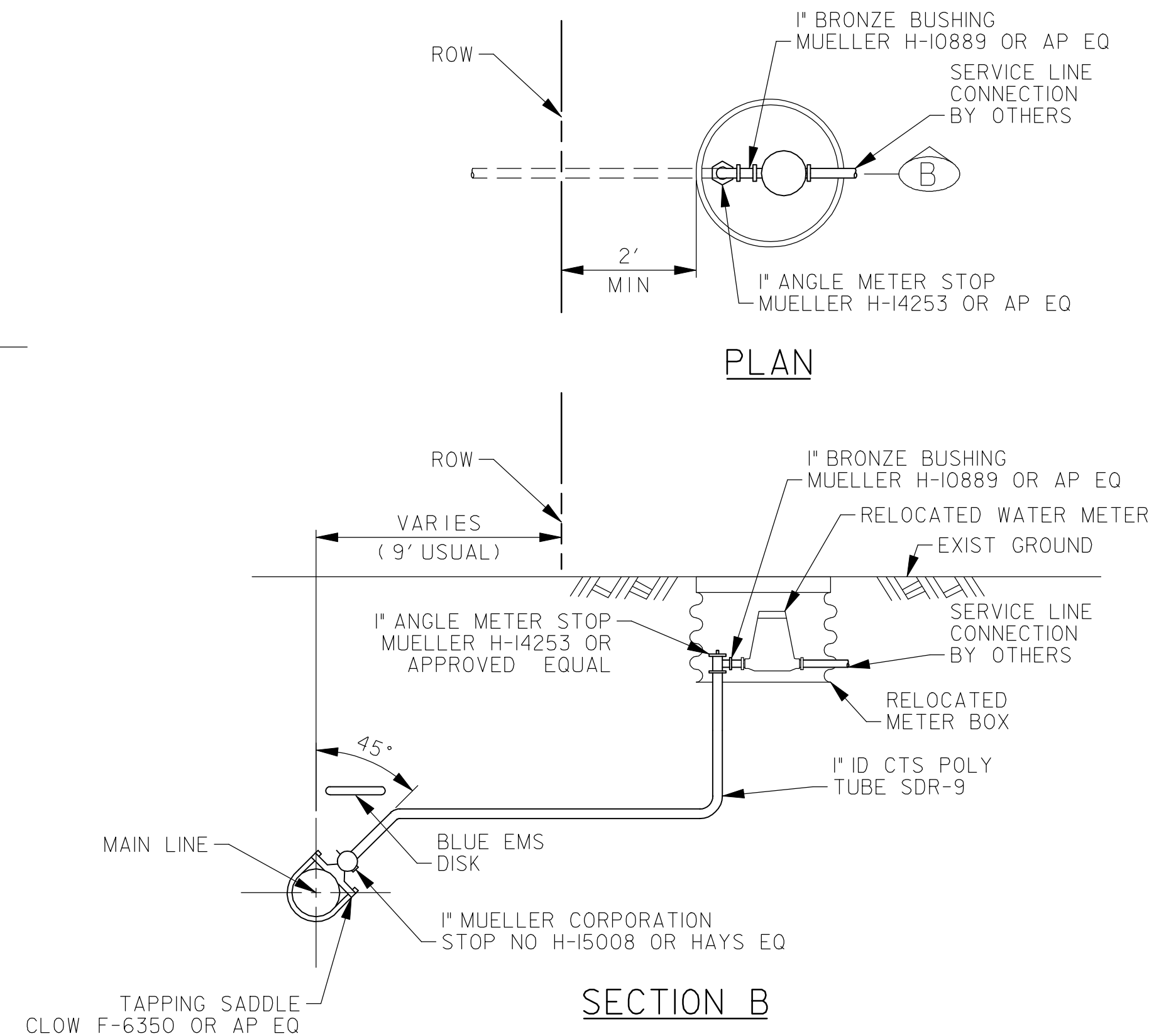


TYPICAL CULVERT INSTALLATION FOR DRIVEWAYS

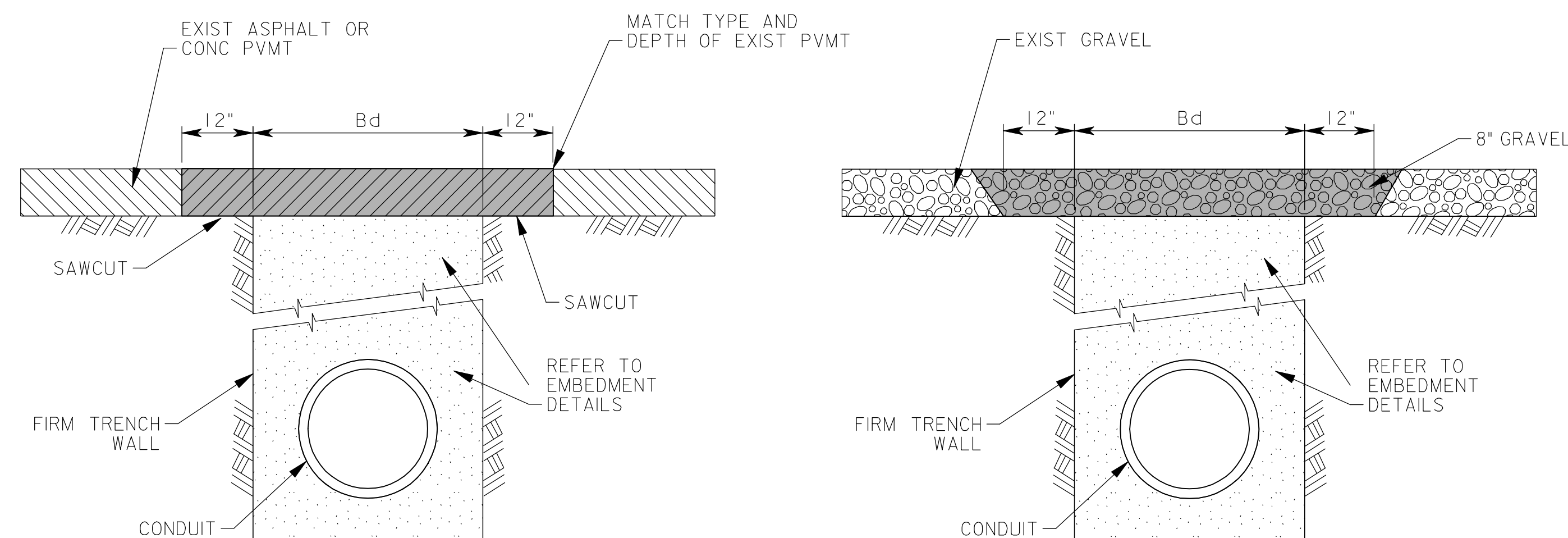
Not To Scale

DIA. OF PIPE	DEPTH OF DITCH	MINIMUM REQUIRED PIPE LENGTH
12"	1' 6"	DRIVEWAY WIDTH + 6'
	2' 0"	DRIVEWAY WIDTH + 12'
	2' 6"	DRIVEWAY WIDTH + 18'
	3' 0"	DRIVEWAY WIDTH + 24'
18"	3' 6"	DRIVEWAY WIDTH + 30'
	2' 0"	DRIVEWAY WIDTH + 6'
	2' 6"	DRIVEWAY WIDTH + 12'
	3' 0"	DRIVEWAY WIDTH + 18'
	3' 6"	DRIVEWAY WIDTH + 24'
	4' 0"	DRIVEWAY WIDTH + 30'



SINGLE SERVICE CONNECTIONRE LOCATION

Not To Scale



CONCRETE AND ASPHALT DRIVEWAY PATCH

(FOR ALL TYPES OF PIPES)

Not To Scale

GRAVEL DRIVEWAY PATCH

(FOR ALL TYPES OF PIPES)

Not To Scale

NOTES:

- PAYMENT TO THE CONTRACTOR FOR REPLACEMENT OF PAVEMENT AND/OR DRIVEWAYS WILL BE BASED ON ACTUAL MEASUREMENTS UP TO A MAXIMUM WIDTH EQUAL TO THE SPECIFIED MAXIMUM TRENCH WIDTH PLUS 2 FEET, UNLESS THE REMOVAL LIMITS ARE WITHIN 3' OF AN EXISTING JOINT IN WHICH CASE THE REMOVAL LIMITS SHALL BE EXTENDED TO THAT JOINT. ANY EXISTING PAVEMENT DAMAGED OR REMOVED IN EXCESS OF THE MAXIMUM LIMITS SHALL BE REPLACED AT THE EXPENSE OF THE CONTRACTOR.

RECORD DRAWING

This drawing is a compilation of the original sealed engineering drawing and modifications by addenda, change orders and information furnished by the contractor. Information shown that was provided by the contractor and others not associated with the design engineer cannot be verified for accuracy or completeness. Original sealed drawing is on file at the office of AECOM TECHNICAL SERVICES, Inc., TBPE REG. NO. F-3580

ORIGINAL DRAWING SEALED & SIGNED BY

T.H. Gaertner, P.E.
TX NO. 37124
ON 8-7-09

NO.	REVISION	BY	DATE



IH 30
WATER LINE IMPROVEMENTS

STANDARD WATER DETAILS

3 OF 3

AECOM

AECOM TECHNICAL SERVICES, INC.
16000 DALLAS PARKWAY, SUITE 350
DALLAS, TEXAS 75248
WWW.AECOM.COM
TBPE REG. NO. F-3580

Unit	AECOM Water	Scale	Horz: AS SHOWN Vert: AS SHOWN	Date	11/4/2011
Designed	JR/RH	Checked	JR/TG	Project No.	60072620
Drawn	RH/FG	Approved	GH	Sheet	24 of 28