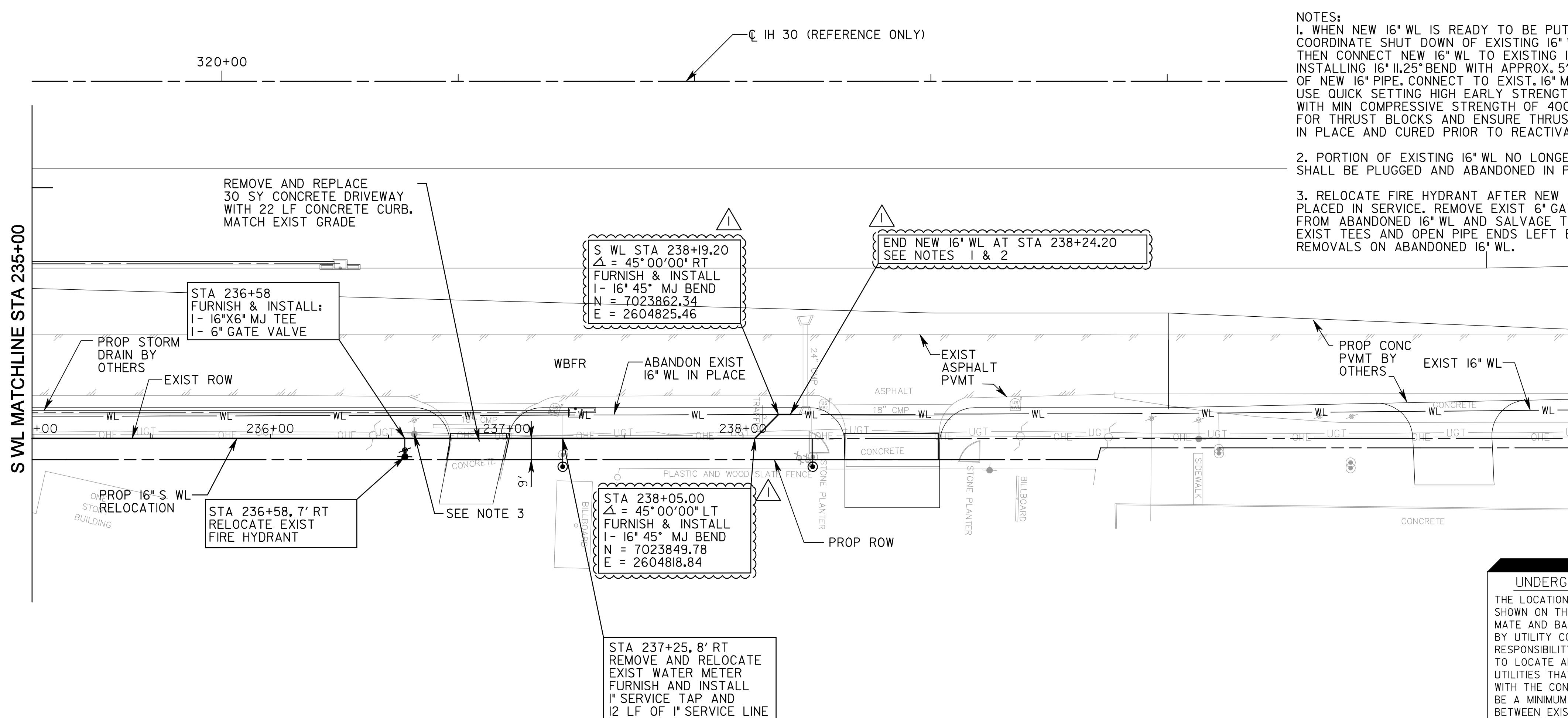
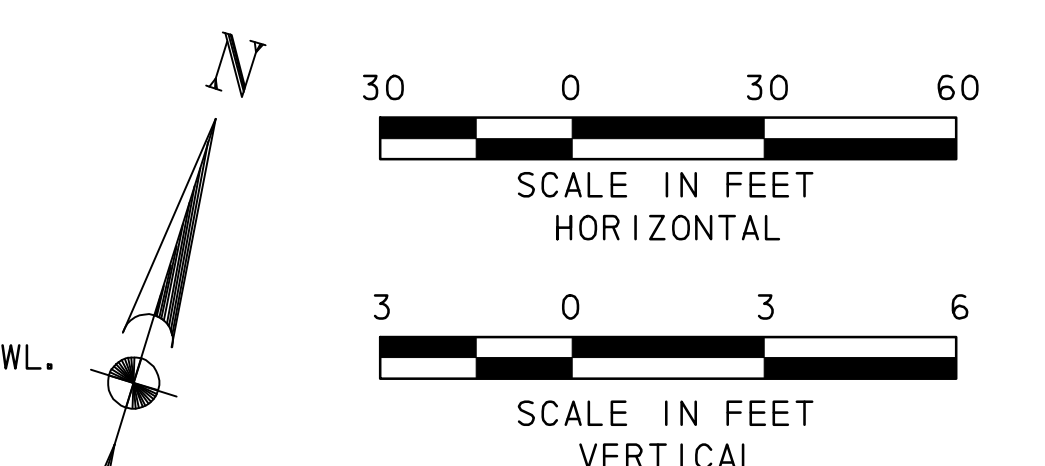


\\usd011\p002\p\Rockw\1\IH30\_U11\FY\CADD\Sheet\REC 10\_26\_11\IH30L\_PFS07\_30\_REC10\_26.dgn  
 11/24/2011

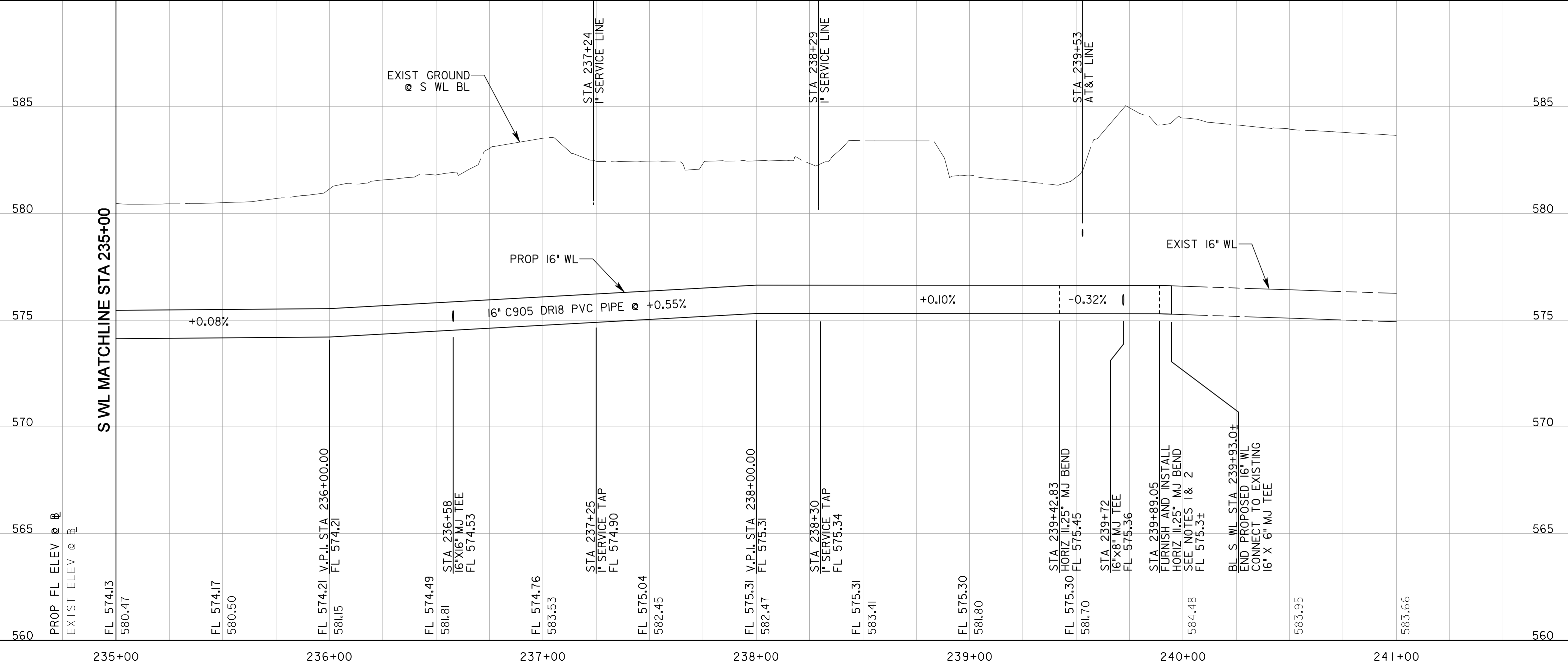


**NOTES:**  
 1. WHEN NEW 16" WL IS READY TO BE PUT IN SERVICE, COORDINATE SHUT DOWN OF EXISTING 16" WL WITH CITY THEN CONNECT NEW 16" WL TO EXISTING 16" WL BY INSTALLING 16" IL25" BEND WITH APPROX. 5' SECTION OF NEW 16" PIPE. CONNECT TO EXIST. 16" MJ TEE. USE QUICK SETTING HIGH EARLY STRENGTH CONCRETE WITH MIN COMPRESSIVE STRENGTH OF 400 PSIN 2 HOURS FOR THRUST BLOCKS AND ENSURE THRUST BLOCKS ARE IN PLACE AND CURED PRIOR TO REACTIVATING EXISTING 16" WL.  
 2. PORTION OF EXISTING 16" WL NO LONGER ACTIVE SHALL BE PLUGGED AND ABANDONED IN PLACE.  
 3. RELOCATE FIRE HYDRANT AFTER NEW 16" WL IS PLACED IN SERVICE. REMOVE EXIST 6" GATE VALVE FROM ABANDONED 16" WL AND SALVAGE TO CITY. PLUG EXIST TEES AND OPEN PIPE ENDS LEFT BY VALVE REMOVALS ON ABANDONED 16" WL.



LEGEND	
	POWER POLE
	GUY WIRE
	TELEPHONE BOX
	POST
	SIGN
	IRON ROD
	FIRE HYDRANT
	WATER VALVE
	MAILBOX
	WATER METER
	IRRIGATION CONTROL VALVE
	GUARD RAIL
	GAS METER
	WASTE WATER MANHOLE
	CHAIN LINK FENCE
	WOOD FENCE
	IRON ROD FOUND
	MONUMENT
	ELECTRIC BOX
	BARBED WIRE FENCE
	TREE
	TELEPHONE UNDERGROUND
	APPROXIMATE GAS LINE
	APPROXIMATE WATER LINE
	OVERHEAD POWER LINE
	TELEPHONE MANHOLE
	TRAFFIC SIGNAL CONTROL BOX
	GAS VALVE

**UNDERGROUND UTILITIES**  
 THE LOCATION OF EXISTING UTILITIES SHOWN ON THESE PLANS ARE APPROXIMATE AND BASED ON DATA FURNISHED BY UTILITY COMPANIES. IT IS THE RESPONSIBILITY OF THE CONTRACTOR TO LOCATE AND VERIFY ON-SITE THE UTILITIES THAT MAY CONFLICT WITH THE CONSTRUCTION. THERE SHALL BE A MINIMUM CLEARANCE OF 24" BETWEEN EXISTING UTILITIES.



**RECORD DRAWING**  
 This drawing is a compilation of the original sealed engineering drawing and modifications by addenda, change orders and information furnished by the contractor. Information shown that was provided by the contractor and others not associated with the design engineer cannot be verified for accuracy or completeness. Original sealed drawing is on file at the office of AECOM TECHNICAL SERVICES, INC., TBPE REG. NO. F-3580

**ORIGINAL DRAWING SEALED & SIGNED BY**  
 T.H. Gaertner, P.E.  
 TX NO. 37124  
 ON 8-7-09

NO.	REVISION	BY	DATE
I	REVISED PIPE ALIGNMENT	THG	11/3/11

**City of Rockwall, Texas**  
**IH 30 WATER LINE IMPROVEMENTS**  
**S WL STA 235+00 TO STA 241+00**

**AECOM**  
 AECOM TECHNICAL SERVICES, INC.  
 16000 DALLAS PARKWAY, SUITE 350  
 DALLAS, TEXAS 75248  
 WWW.AECOM.COM  
 TBPE REG. NO. F-3580

Unit	AECOM Water	Scale	Horz: AS SHOWN Vert: AS SHOWN	Date	11/4/2011
Designed	JR/RH	Checked	JR/TG	Project No.	60072620
Drawn	RH/FG	Approved	GH	Sheet	16 of 28