

DETAIL "B"

STA 219+18, 8.00' RT. RELOCATE EXIST WATER METER FURNISH AND INSTALL 1" SERVICE TAP AND 13 LF OF 1" SERVICE LINE.

STA 219+69.34
 $\Delta = 4^{\circ} 34' 34"$ LT
 FURNISH & INSTALL
 1- 16" 45" MJ BEND
 N = 7023265.48
 E = 2603058.96

STA 219+72.34
 FURNISH & INSTALL
 1- 16"x12" MJ TEE
 1- 12" 45" MJ BEND
 1- 12" MJ SLEEVE
 1- 12" GATE VALVE
 5 LF OF 12" PVC PIPE
 N=7023265.62
 E=2603082.25
 SEE DETAIL "B"

REMOVE AND REPLACE 38 SY ASPHALT. MATCH EXIST ROAD. INSTALL BY OPEN CUT 130 LF 26" WELDED STEEL ENCASUREMENT (SEE NOTE 1)

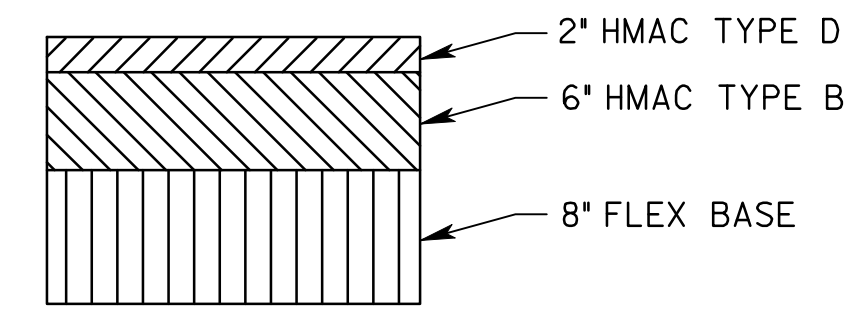
INSTALL BY OPEN CUT 130 LF 26" WELDED STEEL ENCASUREMENT (SEE NOTE 1)

STA 221+11
 END 26" WELDED STEEL ENCASUREMENT

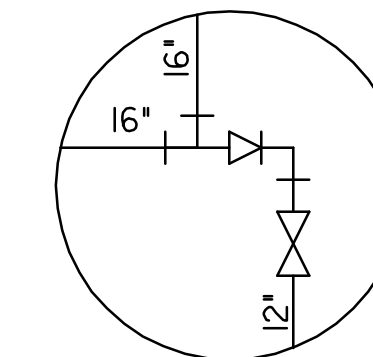
STA 219+81
 BEGIN 26" WELDED STEEL ENCASUREMENT

PROP ROW

- NOTES:
1. MAINTAIN 2 LANES OF 2-WAY TRAVEL ON JOHN KING BLVD WHILE INSTALLING ENCASEMENT.
 2. REPLACE/REPAIR PVMT MARKINGS WHERE PVMT HAS BEEN REMOVED AND REPLACED. NO EXTRA PAY ITEM.
 3. VALVE BOX LOCKING LID SHALL BE SIP INDUSTRIES NO. 6355 OR APPROVED EQUAL



PAVEMENT SECTION
N.T.S.



DETAIL "A"

FURNISH & INSTALL
 1- 16"x16" MJ TEE
 1- 16"x12" PEX MJ REDUCER
 1- 12" 90" PEX MJ BEND
 1- 12" GATE VALVE
 1- 12" MJ PLUG
 20 LF OF 12" PVC PIPE

UNDERGROUND UTILITIES

THE LOCATION OF EXISTING UTILITIES SHOWN ON THESE PLANS ARE APPROXIMATE AND BASED ON DATA FURNISHED BY UTILITY COMPANIES. IT IS THE RESPONSIBILITY OF THE CONTRACTOR TO LOCATE AND VERIFY ON-SITE THE UTILITIES THAT MAY CONFLICT WITH THE CONSTRUCTION. THERE SHALL BE A MINIMUM CLEARANCE OF 24" BETWEEN EXISTING UTILITIES.

LEGEND	
	POWER POLE
	GUY WIRE
	TELEPHONE BOX
	POST
	SIGN
	IRON ROD
	FIRE HYDRANT
	WATER VALVE
	MAILBOX
	WATER METER
	IRRIGATION CONTROL VALVE
	GUARD RAIL
	GAS METER
	WASTE WATER MANHOLE
	CHAIN LINK FENCE
	WOOD FENCE
	IRON ROD FOUND
	MONUMENT
	ELECTRIC BOX
	BARBED WIRE FENCE
	TREE
	TELEPHONE UNDERGROUND
	APPROXIMATE GAS LINE
	APPROXIMATE WATER LINE
	OVERHEAD POWER LINE
	TELEPHONE MANHOLE
	TRAFFIC SIGNAL CONTROL BOX
	GAS VALVE

RECORD DRAWING

This drawing is a compilation of the original sealed engineering drawing and modifications by addenda, change orders and information furnished by the contractor. Information shown that was provided by the contractor and others not associated with the design engineer cannot be verified for accuracy or completeness. Original sealed drawing is on file at the office of AECOM TECHNICAL SERVICES, Inc., TBPE REG. NO. F-3580

ORIGINAL DRAWING SEALED & SIGNED BY

T.H. Gaertner, P.E.
 TX NO. 37124
 ON 8-7-09

NO.	REVISION	BY	DATE
1	REVISED PIPE ALIGNMENT	THG	11/3/11



City of Rockwall, Texas

IH 30
 WATER LINE IMPROVEMENTS

S WL STA 219+00 TO STA 223+00

AECOM

AECOM TECHNICAL SERVICES, INC.
 19000 DALLAS PARKWAY, SUITE 350
 DALLAS, TEXAS 75248
 WWW.AECOM.COM
 TBPE REG. NO. F-3580

Unit	AECOM Water	Scale	Horiz: AS SHOWN Vert: AS SHOWN	Date	11/8/2011
Designed	JR/RH	Checked	JR/TG	Project No.	60072620
Drawn	RH/FG	Approved	GH	Sheet	13 of 28