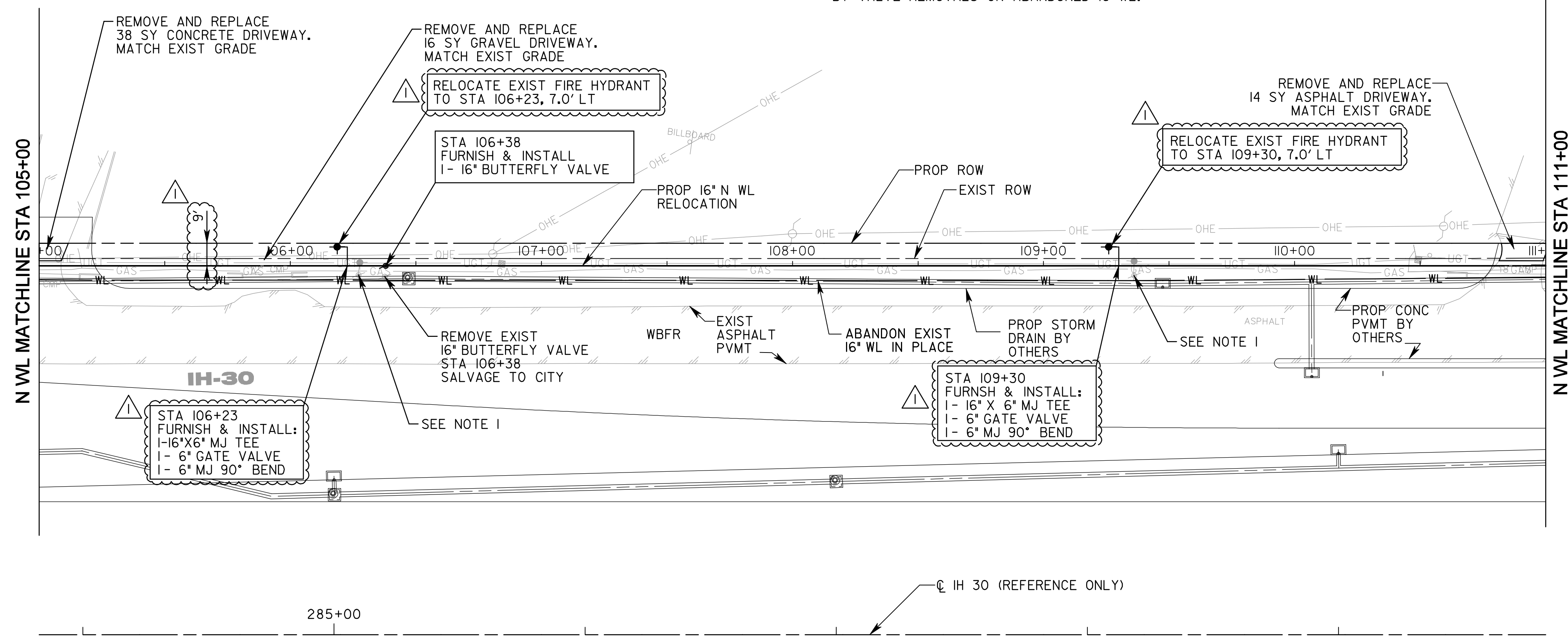
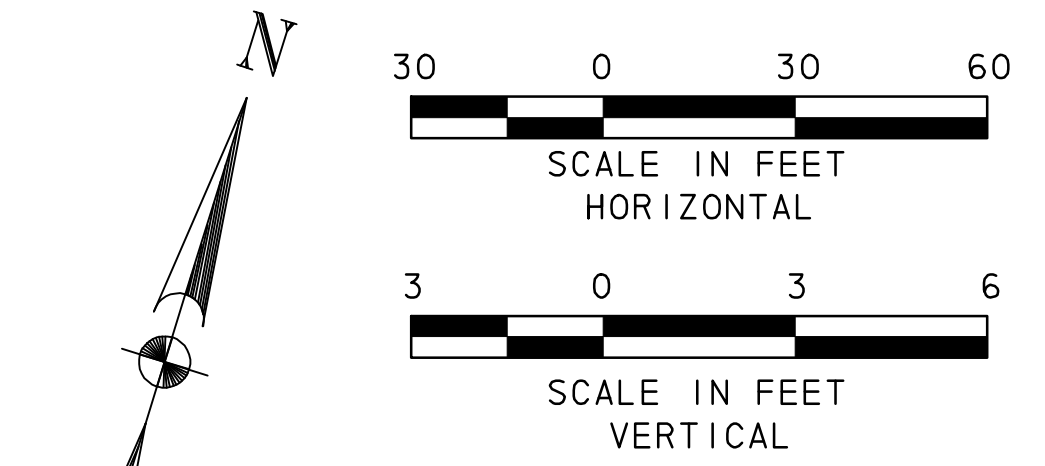


NOTES:  
 1. RELOCATE FIRE HYDRANTS AFTER NEW 16" WL IS PLACED IN SERVICE. REMOVE EXIST 6" GATE VALVES AND 16" BUTTERFLY VALVE FROM ABANDONED 16" WL AND SALVAGE TO CITY. PLUG EXIST TEES AND OPEN PIPE ENDS LEFT BY VALVE REMOVALS ON ABANDONED 16" WL.



LEGEND	
	POWER POLE
	GUY WIRE
	TELEPHONE BOX
	POST
	SIGN
	IRON ROD
	FIRE HYDRANT
	WATER VALVE
	MAILBOX
	WATER METER
	IRRIGATION CONTROL VALVE
	GUARD RAIL
	GAS METER
	WASTE WATER MANHOLE
	CHAIN LINK FENCE
	WOOD FENCE
	IRON ROD FOUND
	MONUMENT
	ELECTRIC BOX
	BARBED WIRE FENCE
	TREE
	TELEPHONE UNDERGROUND
	APPROXIMATE GAS LINE
	APPROXIMATE WATER LINE
	OVERHEAD POWER LINE
	TELEPHONE MANHOLE
	TRAFFIC SIGNAL CONTROL BOX
	GAS VALVE

**UNDERGROUND UTILITIES**  
 THE LOCATION OF EXISTING UTILITIES SHOWN ON THESE PLANS ARE APPROXIMATE AND BASED ON DATA FURNISHED BY UTILITY COMPANIES. IT IS THE RESPONSIBILITY OF THE CONTRACTOR TO LOCATE AND VERIFY ON-SITE THE UTILITIES THAT MAY CONFLICT WITH THE CONSTRUCTION. THERE SHALL BE A MINIMUM CLEARANCE OF 24" BETWEEN EXISTING UTILITIES.

**RECORD DRAWING**  
 This drawing is a compilation of the original sealed engineering drawing and modifications by addenda, change orders and information furnished by the contractor. Information shown that was provided by the contractor and others not associated with the design engineer cannot be verified for accuracy or completeness. Original sealed drawing is on file at the office of AECOM TECHNICAL SERVICES, Inc., TBPE REG. NO. F-3580

ORIGINAL DRAWING SEALED & SIGNED BY  
 T.H. Gaertner, P.E.  
 TX NO. 37124  
 ON 8-7-09

NO.	REVISION	BY	DATE
1	REVISED PIPE ALIGNMENT	THG	11/3/11

**City of Rockwall, Texas**

**IH 30  
 WATER LINE IMPROVEMENTS**

**N WL STA 105+00 TO STA 111+00**

**AECOM**  
AECOM TECHNICAL SERVICES, INC.  
 19000 DALLAS PARKWAY, SUITE 350  
 DALLAS, TEXAS 75248  
 WWW.AECOM.COM  
 TBPE REG. NO. F-3580

Unit	AECOM Water	Scale:	Horz: AS SHOWN Vert: AS SHOWN	Date	11/7/2011
Designed	JR/RH	Checked	JR/TG	Project No.	60072620
Drawn	RH/FG	Approved	GH	Sheet	7 of 28

\Users\j11\p002\p\Rockwall\IH30\_U111\FY\CADD\Sheet\REC 10\_26\_11\IH30U\_PP02\_30\_REC10\_26.dgn  
 11/7/2011

