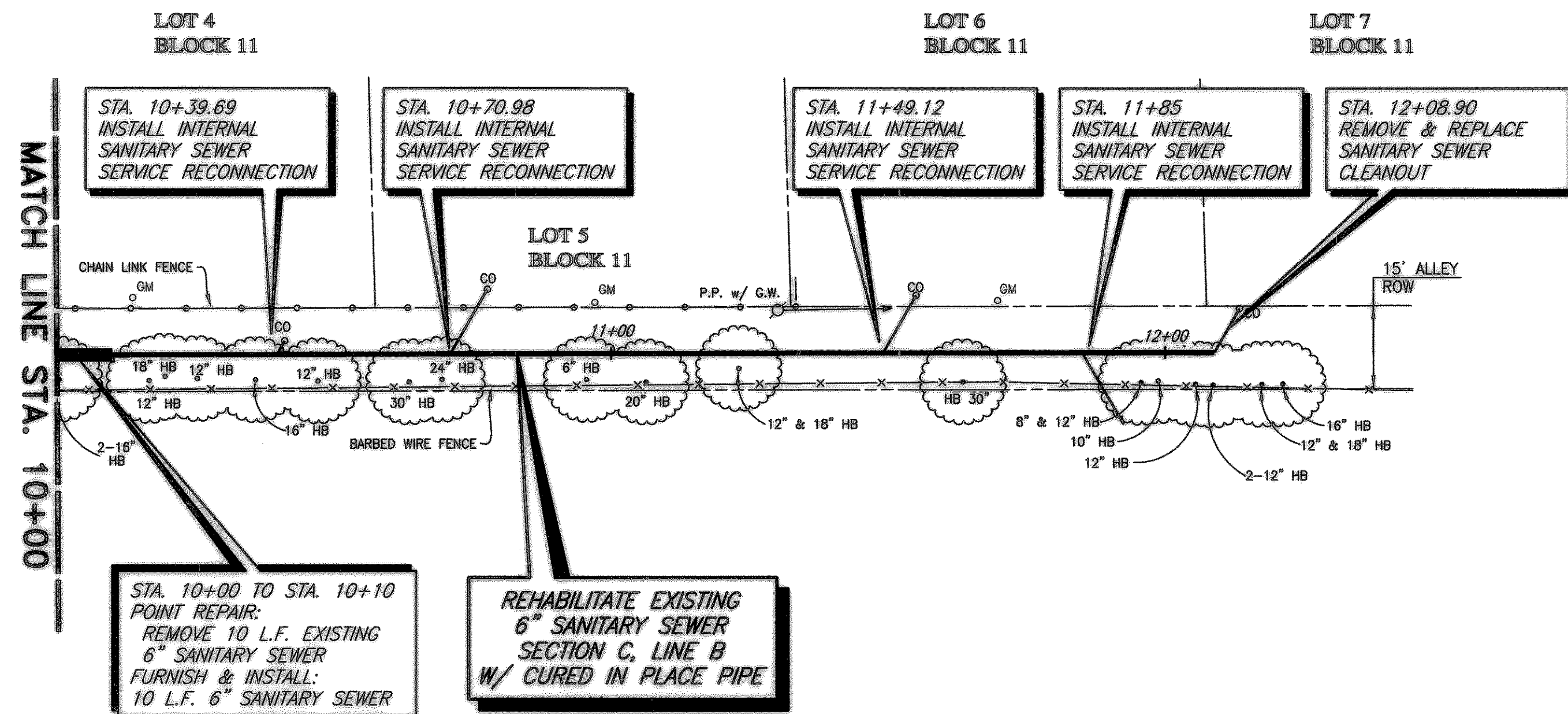


HIGHWOOD ADDITION

WARNING  
 TXU GAS LINE  
 NOTIFY TXU 72 HOURS  
 PRIOR TO EXCAVATION  
 IN VICINITY OF  
 STA. 10+00 TO  
 STA. 12+11



NOTES:

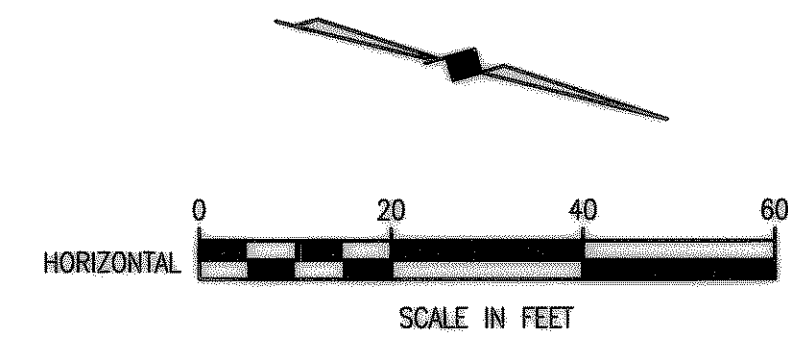
- 1) EXISTING SANITARY SEWER LINE B IS TO BE REHABILITATED WITH CURED IN PLACE PIPE (CIPP) IN ACCORDANCE WITH ASTM F1216 & ASTM F1743 EXCEPT WHERE NOTED FOR POINT REPAIR.
- 2) EXISTING MANHOLES ARE TO BE REHABILITATED WITH SPRAY APPLIED TECHNIQUES.

I.B.M. - A  
 RAILROAD SPIKE IN POWER POLE ON EAST SIDE ELM DRIVE  
 @ ALLEY NORTH OF HIGHLAND DRIVE  
 ELEV. 556.86

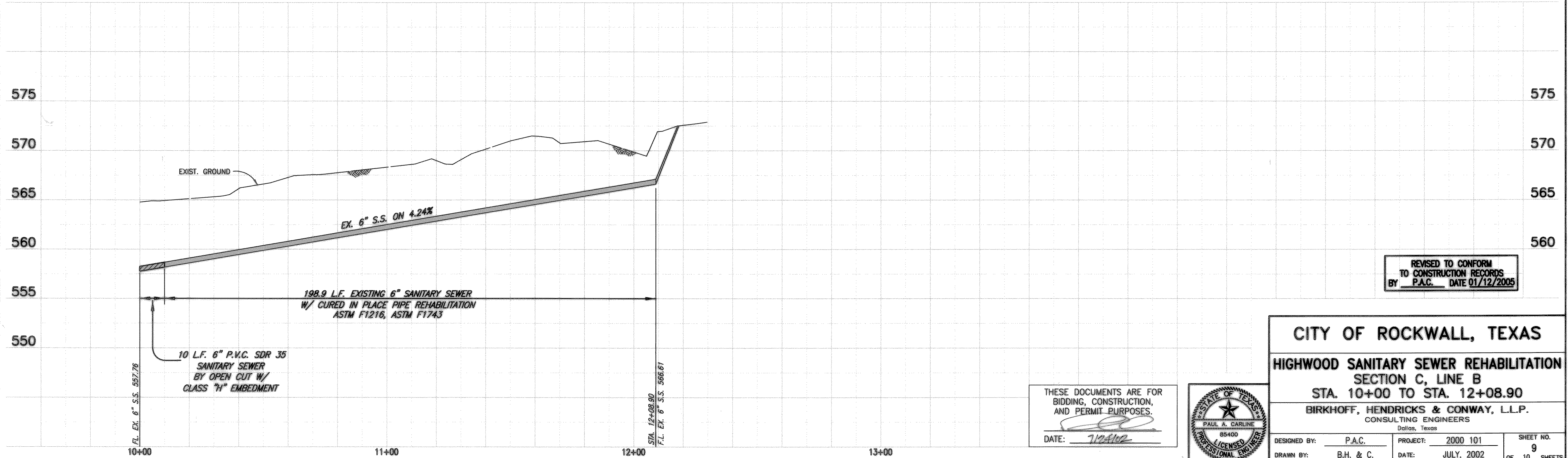
I.B.M. - B  
 1" CUT ON TOP OF CURB ON NORTH SIDE OF WESTWAY  
 DRIVE @ ALLEY EAST OF VALLEY DRIVE.  
 ELEV. 535.59

I.B.M. - C  
 1" CUT ON TOP OF CURB ON SOUTH SIDE OF ELM  
 DRIVE @ ALLEY EAST OF VALLEY DRIVE.  
 ELEV. 524.57

SURVEY CONTROL POINTS  
 CP 27 604 NAIL N 5832.3259  
 E 5853.1110

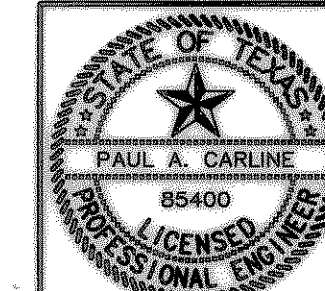


These plans and related specifications were prepared for construction of this specific project only. Reuse of these documents is not permitted without written authorization of Birkhoff, Hendricks & Conway, L.L.P.



REVISED TO CONFORM  
 TO CONSTRUCTION RECORDS  
 BY P.A.C. DATE 01/12/2005

THESE DOCUMENTS ARE FOR  
 BIDDING, CONSTRUCTION,  
 AND PERMIT PURPOSES.  
 DATE: 7/24/02



CITY OF ROCKWALL, TEXAS

HIGHWOOD SANITARY SEWER REHABILITATION  
 SECTION C, LINE B  
 STA. 10+00 TO STA. 12+08.90  
 BIRKHOFF, HENDRICKS & CONWAY, L.L.P.  
 CONSULTING ENGINEERS  
 Dallas, Texas

DESIGNED BY: P.A.C. PROJECT: 2000 101 SHEET NO. 9  
 DRAWN BY: B.H. & C. DATE: JULY, 2002 OF 10 SHEETS