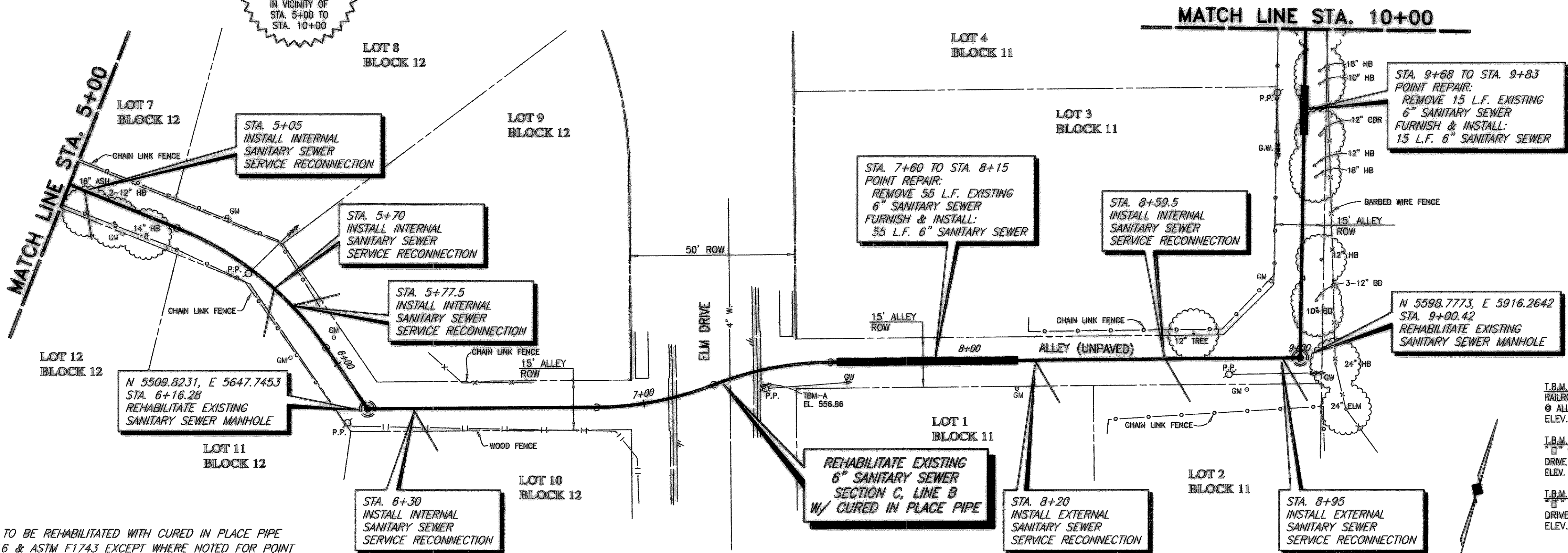


WARNING
 TXU GAS LINE
 NOTIFY TXU 72 HOURS
 PRIOR TO EXCAVATION
 IN VICINITY OF
 STA. 5+00 TO
 STA. 10+00

HIGHWOOD ADDITION



SURVEY CONTROL POINTS

CP	DESCRIPTION	N	E
CP 22	60d NAIL	N 5550.2309	E 5593.4955
CP 23	60d NAIL	N 5514.9417	E 5670.3307
CP 24	60d NAIL	N 5562.1819	E 5783.8475
CP 25	60d NAIL	N 5586.9504	E 5908.5882
CP 26	60d NAIL	N 5678.8448	E 5896.8892

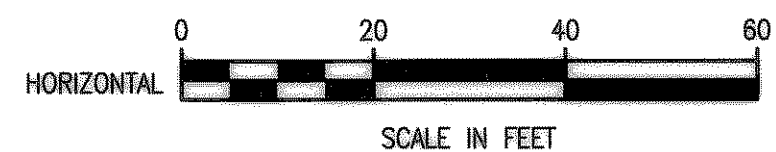
T.B.M. - A
 RAILROAD SPIKE IN POWER POLE ON EAST SIDE ELM DRIVE
 @ ALLEY NORTH OF HIGHLAND DRIVE
 ELEV. 556.86

T.B.M. - B
 "B" CUT ON TOP OF CURB ON NORTH SIDE OF WESTWAY
 DRIVE @ ALLEY EAST OF VALLEY DRIVE.
 ELEV. 535.59

T.B.M. - C
 "B" CUT ON TOP OF CURB ON SOUTH SIDE OF ELM
 DRIVE @ ALLEY EAST OF VALLEY DRIVE.
 ELEV. 524.57

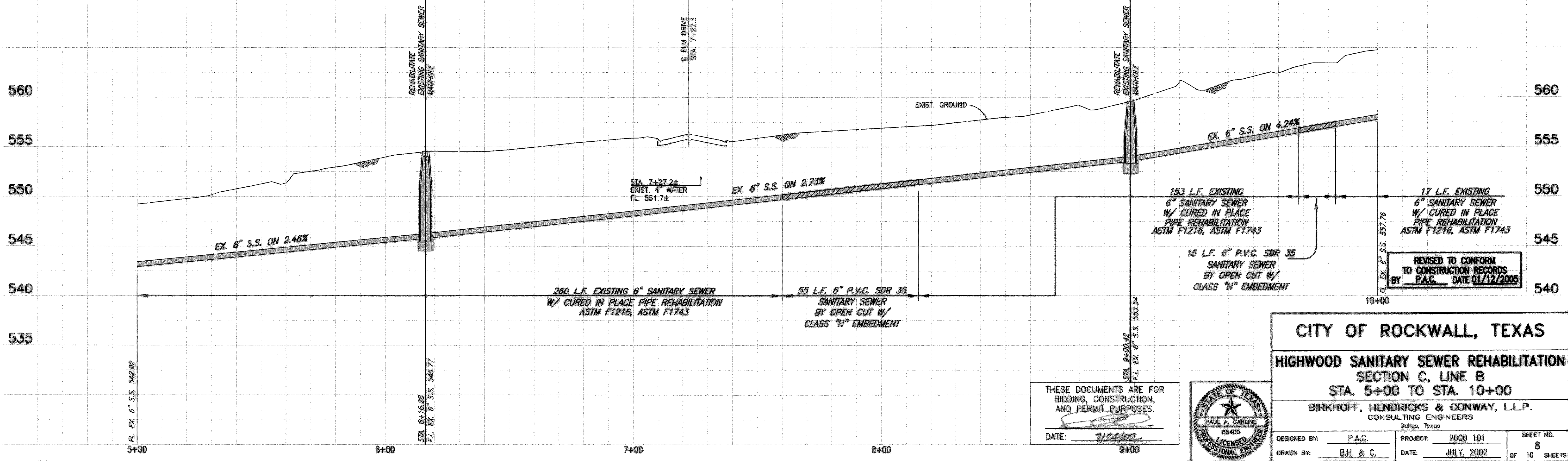
NOTES:

- EXISTING SANITARY SEWER LINE B IS TO BE REHABILITATED WITH CURED IN PLACE PIPE (CIPP) IN ACCORDANCE WITH ASTM F1216 & ASTM F1743 EXCEPT WHERE NOTED FOR POINT REPAIR.
- EXISTING MANHOLES ARE TO BE REHABILITATED WITH SPRAY APPLIED TECHNIQUES.



These plans and related specifications were prepared for construction of this specific project only. Reuse of these documents is not permitted without written authorization of Birkhoff, Hendricks & Conway, L.L.P.

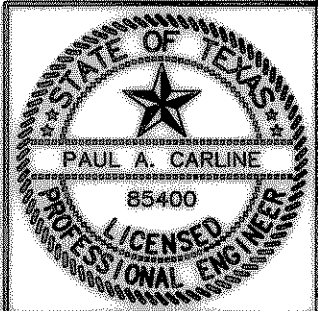
H:\Projects\Rockwall\2000101\Drawings\Phase 1\00101-2-05.dwg
 07/24/2002 T.H.



REVISED TO CONFORM TO CONSTRUCTION RECORDS BY P.A.C. DATE 01/12/2005

THESE DOCUMENTS ARE FOR BIDDING, CONSTRUCTION, AND PERMIT PURPOSES.

DATE: 7/24/02



CITY OF ROCKWALL, TEXAS

HIGHWOOD SANITARY SEWER REHABILITATION
 SECTION C, LINE B
 STA. 5+00 TO STA. 10+00

BIRKHOFF, HENDRICKS & CONWAY, L.L.P.
 CONSULTING ENGINEERS
 Dallas, Texas

DESIGNED BY: P.A.C.	PROJECT: 2000 101	SHEET NO. 8
DRAWN BY: B.H. & C.	DATE: JULY, 2002	OF 10 SHEETS