

WARNING
 TXU GAS LINE
 NOTIFY TXU 72 HOURS
 PRIOR TO EXCAVATION
 IN VICINITY OF
 STA. 0+00 TO
 STA. 5+00

HIGHWOOD ADDITION

MATCH LINE STA. 5+00

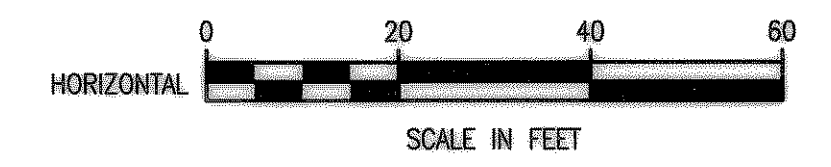
NOTES:

- 1) EXISTING SANITARY SEWER LINE B IS TO BE REHABILITATED WITH CURED IN PLACE PIPE (CIPP) IN ACCORDANCE WITH ASTM F1216 & ASTM F1743 EXCEPT WHERE NOTED FOR POINT REPAIR.
- 2) EXISTING MANHOLES ARE TO BE REHABILITATED WITH SPRAY APPLIED TECHNIQUES.

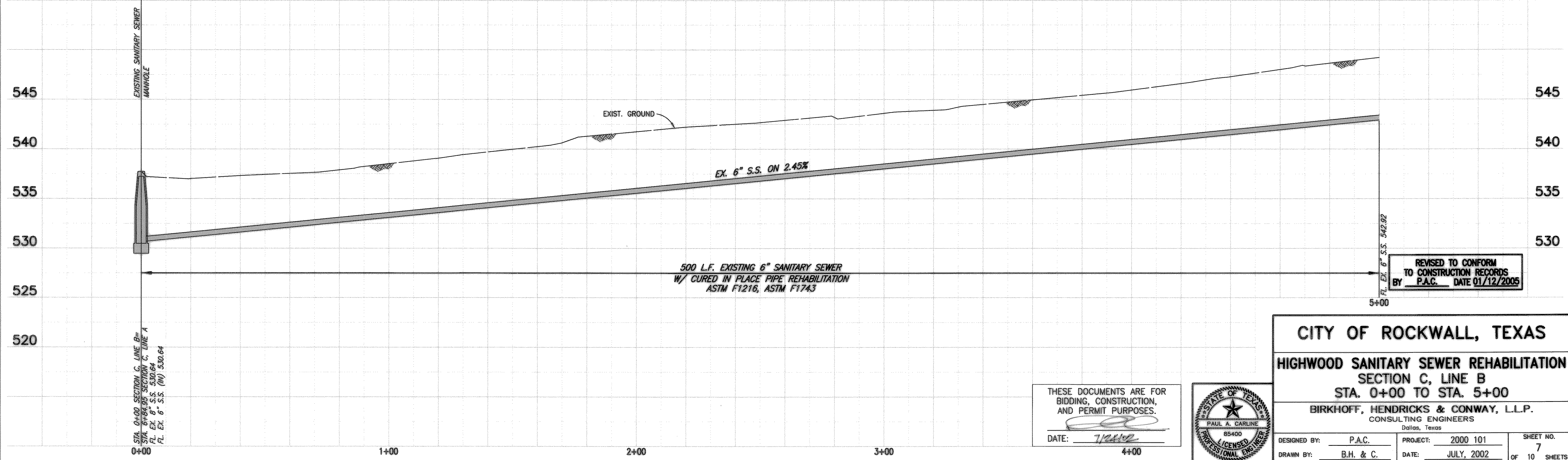
SURVEY CONTROL POINTS

CP 15	60d NAIL	N 5665.9227	E 5078.4711
CP 21	60d NAIL	N 5591.7276	E 5294.9410
CP 22	60d NAIL	N 5567.2601	E 5427.4722

- I.B.M. - A**
 RAILROAD SPIKE IN POWER POLE ON EAST SIDE ELM DRIVE @ ALLEY NORTH OF HIGHLAND DRIVE
 ELEV. 556.86
- I.B.M. - B**
 4" CUT ON TOP OF CURB ON NORTH SIDE OF WESTWAY DRIVE @ ALLEY EAST OF VALLEY DRIVE.
 ELEV. 535.59
- I.B.M. - C**
 4" CUT ON TOP OF CURB ON SOUTH SIDE OF ELM DRIVE @ ALLEY EAST OF VALLEY DRIVE.
 ELEV. 524.57



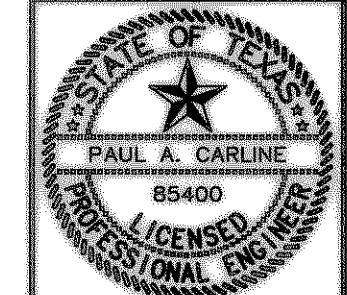
These plans and related specifications were prepared for construction of this specific project only. Reuse of these documents is not permitted without written authorization of Birkhoff, Hendricks & Conway, L.L.P.



STA. 0+00 SECTION C, LINE B =
 STA. 6+84.95 SECTION C, LINE A
 FL EX. 6" S.S. 530.64
 FL EX. 6" S.S. (N) 530.64

REVISED TO CONFORM
 TO CONSTRUCTION RECORDS
 BY P.A.C. DATE 01/12/2005

THESE DOCUMENTS ARE FOR
 BIDDING, CONSTRUCTION,
 AND PERMIT PURPOSES.
 DATE: 7/2/02



CITY OF ROCKWALL, TEXAS

HIGHWOOD SANITARY SEWER REHABILITATION
 SECTION C, LINE B
 STA. 0+00 TO STA. 5+00

BIRKHOFF, HENDRICKS & CONWAY, L.L.P.
 CONSULTING ENGINEERS
 Dallas, Texas

DESIGNED BY: P.A.C.	PROJECT: 2000 101	SHEET NO. 7
DRAWN BY: B.H. & C.	DATE: JULY, 2002	OF 10 SHEETS

H:\Projects\Rockwall\2000\101\Sheets\Phase 1\00101-2-04.dwg
 07/24/2002 T.U.H