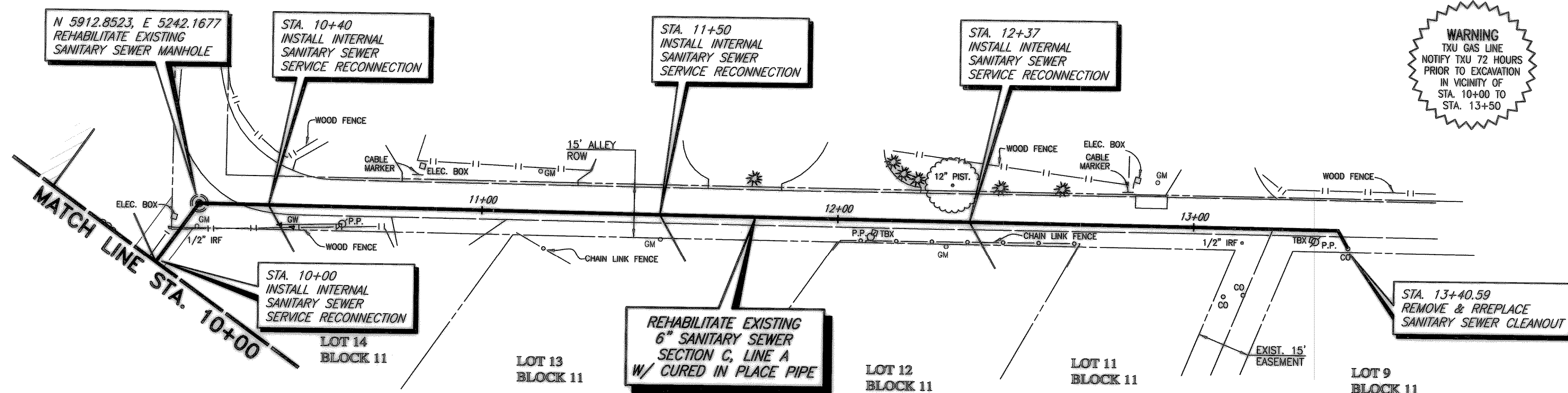


NORTH SHORE, PHASE I ADDITION

NOTES:

- 1) EXISTING SANITARY SEWER LINE A IS TO BE REHABILITATED WITH CURED IN PLACE PIPE (CIPP) IN ACCORDANCE WITH ASTM F1216 & ASTM F1743. THE CONTRACTOR SHALL INCLUDE IN THEIR BID FOR REHABILITATING LINE A, PREPARATORY CLEANING & PROVISIONS FOR BYPASSING SECTIONS OF LINE NECESSARY FOR THE REHABILITATION OF THE SANITARY SEWER.
- 2) EXISTING MANHOLES ARE TO BE REHABILITATED WITH SPRAY IN REHABILITATION METHODS.

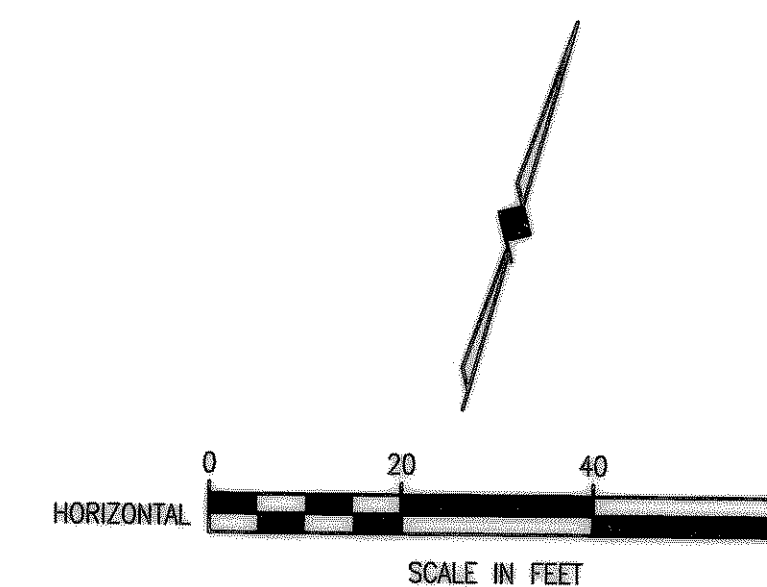


SURVEY CONTROL POINTS

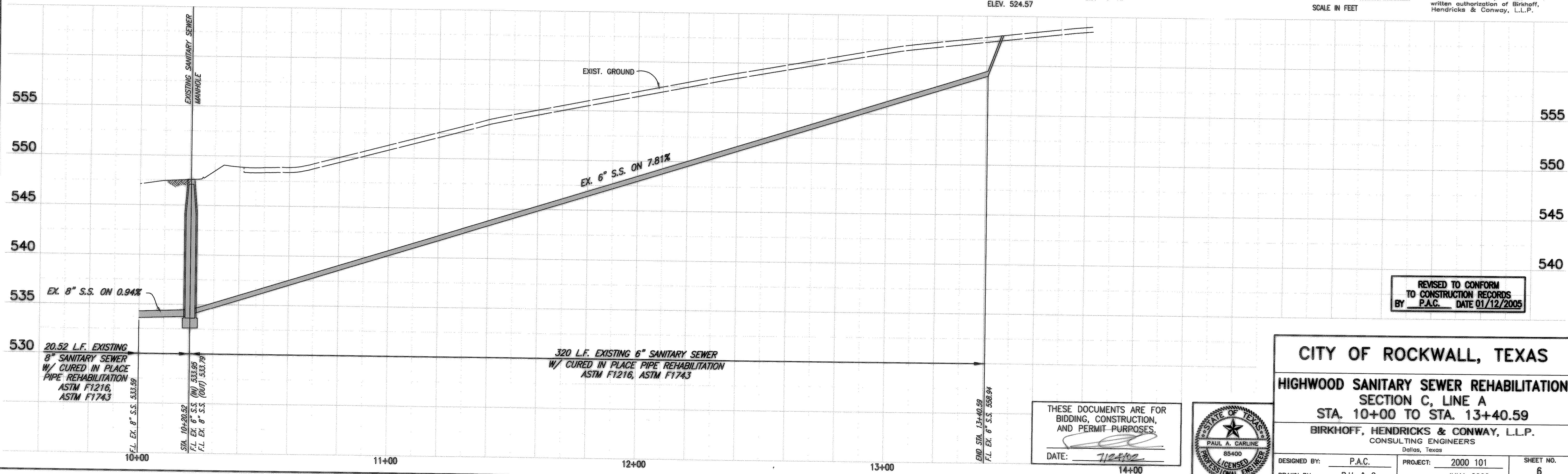
CP 18	60d NAIL	N 5918.0529 E 5233.7805
CP 19	60d NAIL	N 5944.0054 E 5375.7968
CP 20	60d NAIL	N 5972.4693 E 5503.9924

HIGHWOOD ADDITION

- B.M. - A**
RAILROAD SPIKE IN POWER POLE ON EAST SIDE ELM DRIVE
@ ALLEY NORTH OF HIGHLAND DRIVE
ELEV. 556.86
- B.M. - B**
" " CUT ON TOP OF CURB ON NORTH SIDE OF WESTWAY DRIVE @ ALLEY EAST OF VALLEY DRIVE.
ELEV. 535.59
- B.M. - C**
" " CUT ON TOP OF CURB ON SOUTH SIDE OF ELM DRIVE @ ALLEY EAST OF VALLEY DRIVE.
ELEV. 524.57



These plans and related specifications were prepared for construction of this specific project only. Reuse of these documents is not permitted without written authorization of Birkhoff, Hendricks & Conway, L.L.P.



REVISED TO CONFORM TO CONSTRUCTION RECORDS BY P.A.C. DATE 01/12/2005

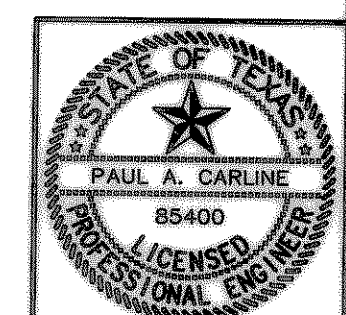
CITY OF ROCKWALL, TEXAS

HIGHWOOD SANITARY SEWER REHABILITATION SECTION C, LINE A STA. 10+00 TO STA. 13+40.59

BIRKHOFF, HENDRICKS & CONWAY, L.L.P.
CONSULTING ENGINEERS
Dallas, Texas

DESIGNED BY: P.A.C. PROJECT: 2000 101 SHEET NO. 6
DRAWN BY: B.H. & C. DATE: JULY, 2002 OF 10 SHEETS

THESE DOCUMENTS ARE FOR BIDDING, CONSTRUCTION, AND PERMIT PURPOSES.
DATE: 7/2/02



H:\Projects\Rockwall\2000\101\Sheets\Phase I\00101-2-03.dwg 07/24/2002 T.J.H.