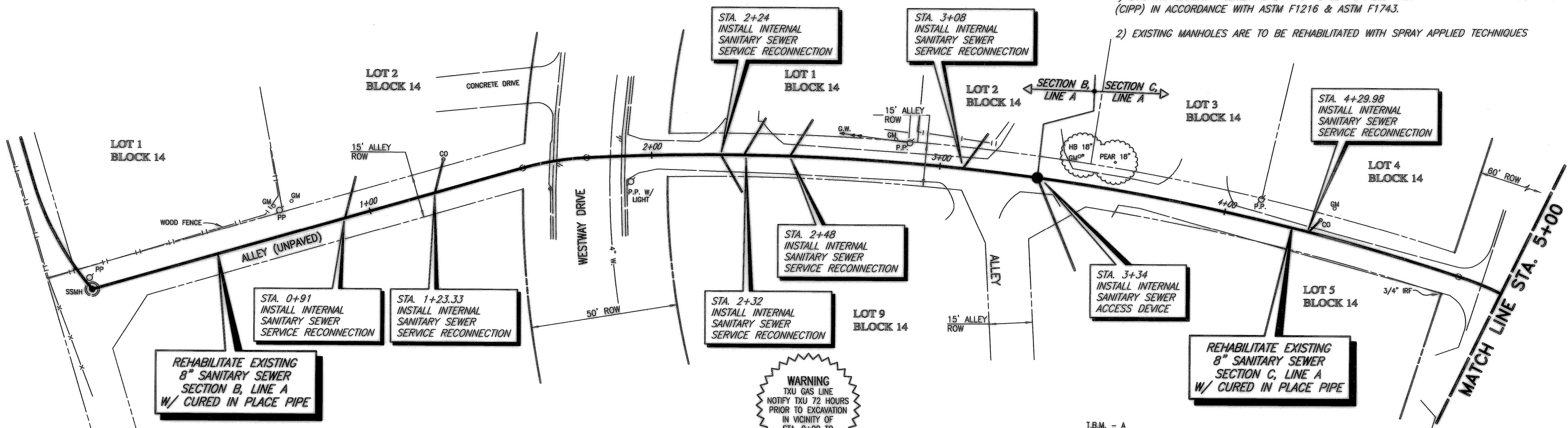


**NOTES:**

- 1) EXISTING SANITARY SEWER LINE A IS TO BE REHABILITATED WITH CURED IN PLACE PIPE (CIPP) IN ACCORDANCE WITH ASTM F1216 & ASTM F1743.
- 2) EXISTING MANHOLES ARE TO BE REHABILITATED WITH SPRAY APPLIED TECHNIQUES



REHABILITATE EXISTING 8" SANITARY SEWER SECTION B, LINE A W/ CURED IN PLACE PIPE

STA. 0+91 INSTALL INTERNAL SANITARY SEWER SERVICE RECONNECTION  
 STA. 1+23.33 INSTALL INTERNAL SANITARY SEWER SERVICE RECONNECTION

STA. 2+32 INSTALL INTERNAL SANITARY SEWER SERVICE RECONNECTION  
 STA. 2+48 INSTALL INTERNAL SANITARY SEWER SERVICE RECONNECTION

STA. 2+24 INSTALL INTERNAL SANITARY SEWER SERVICE RECONNECTION

STA. 3+08 INSTALL INTERNAL SANITARY SEWER SERVICE RECONNECTION

STA. 3+34 INSTALL INTERNAL SANITARY SEWER ACCESS DEVICE

STA. 4+29.98 INSTALL INTERNAL SANITARY SEWER SERVICE RECONNECTION

REHABILITATE EXISTING 8" SANITARY SEWER SECTION C, LINE A W/ CURED IN PLACE PIPE

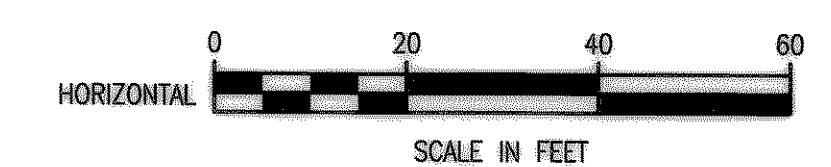
**WARNING**  
 TXU GAS LINE  
 NOTIFY TXU 72 HOURS  
 PRIOR TO EXCAVATION  
 IN VICINITY OF  
 STA. 0+00 TO  
 STA. 5+00

**SURVEY CONTROL POINTS**

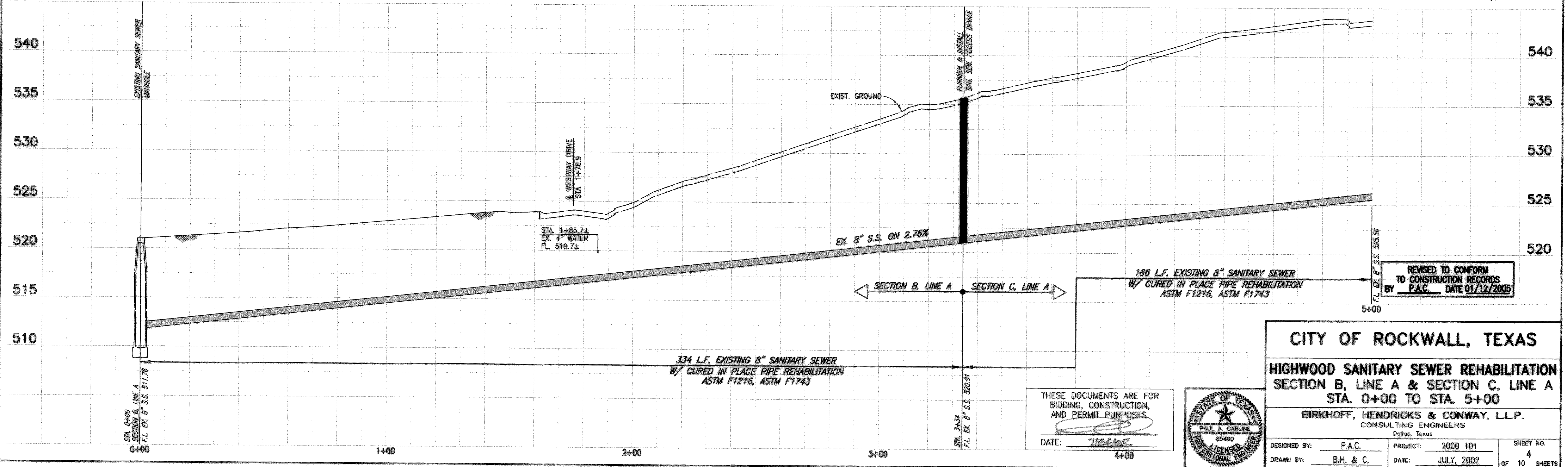
CP 8	1/2 IRON ROD	N 5000.0000 E 5000.0000
CP 12	PK NAIL	N 4954.6277 E 4805.4854
CP 13	60d NAIL	N 4929.2267 E 4696.3386
CP 14	60d NAIL	N 4928.8287 E 4603.5755

**HIGHWOOD ADDITION**

- I.B.M. - A**  
 RAILROAD SPIKE IN POWER POLE ON EAST SIDE ELM DRIVE  
 @ ALLEY NORTH OF HIGHLAND DRIVE  
 ELEV. 556.86
- I.B.M. - B**  
 1" CUT ON TOP OF CURB ON NORTH SIDE OF WESTWAY DRIVE @ ALLEY EAST OF VALLEY DRIVE.  
 ELEV. 535.59
- I.B.M. - C**  
 1" CUT ON TOP OF CURB ON SOUTH SIDE OF ELM DRIVE @ ALLEY EAST OF VALLEY DRIVE.  
 ELEV. 524.57



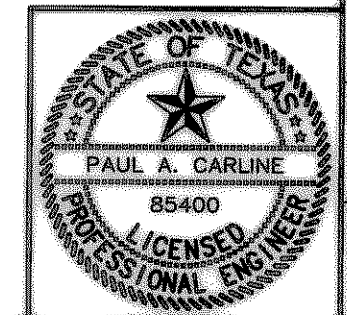
These plans and related specifications were prepared for construction of this specific project only. Reuse of these documents is not permitted without written authorization of Birkhoff, Hendricks & Conway, L.L.P.



REVISED TO CONFORM TO CONSTRUCTION RECORDS BY P.A.C. DATE 01/12/2005

**CITY OF ROCKWALL, TEXAS**  
**HIGHWOOD SANITARY SEWER REHABILITATION**  
**SECTION B, LINE A & SECTION C, LINE A**  
**STA. 0+00 TO STA. 5+00**

**BIRKHOFF, HENDRICKS & CONWAY, L.L.P.**  
 CONSULTING ENGINEERS  
 Dallas, Texas



THESE DOCUMENTS ARE FOR BIDDING, CONSTRUCTION, AND PERMIT PURPOSES.  
 DATE: 7/12/02

DESIGNED BY: P.A.C.	PROJECT: 2000 101	SHEET NO. 4
DRAWN BY: B.H. & C.	DATE: JULY, 2002	OF 10 SHEETS

H:\Projects\Rockwall\2000101\Sheets\Phase I\00101-2-01.dwg 07/24/2002 T:UH