

**NOTES:**

- 1) CONTRACTOR SHALL BID ON THE BASE BID OR ALTERNATE BID OR BOTH.
- 2) NUMBER AND LOCATION OF POINT REPAIRS SHOWN IS BASED ON REVIEW OF T.V. TAPES OF SANITARY SEWER. ADDITIONAL POINT REPAIRS MAY BE REQUIRED DURING CONSTRUCTION.

**SECTION A, LINE A**

**BASE BID**

CURED IN PLACE PIPE REHABILITATION & MANHOLE REHABILITATION USING SPRAY-APPLIED TECHNIQUES.

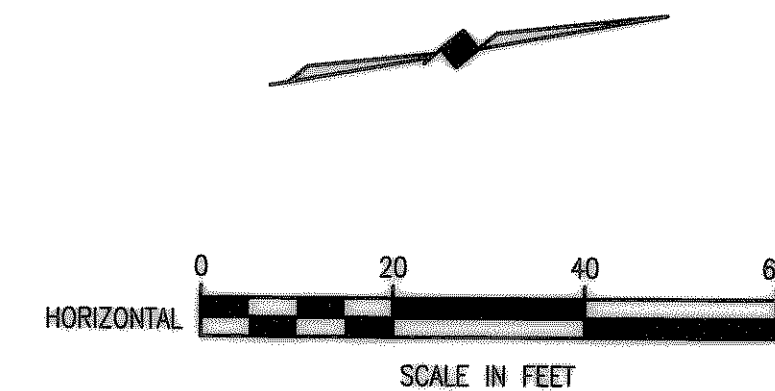
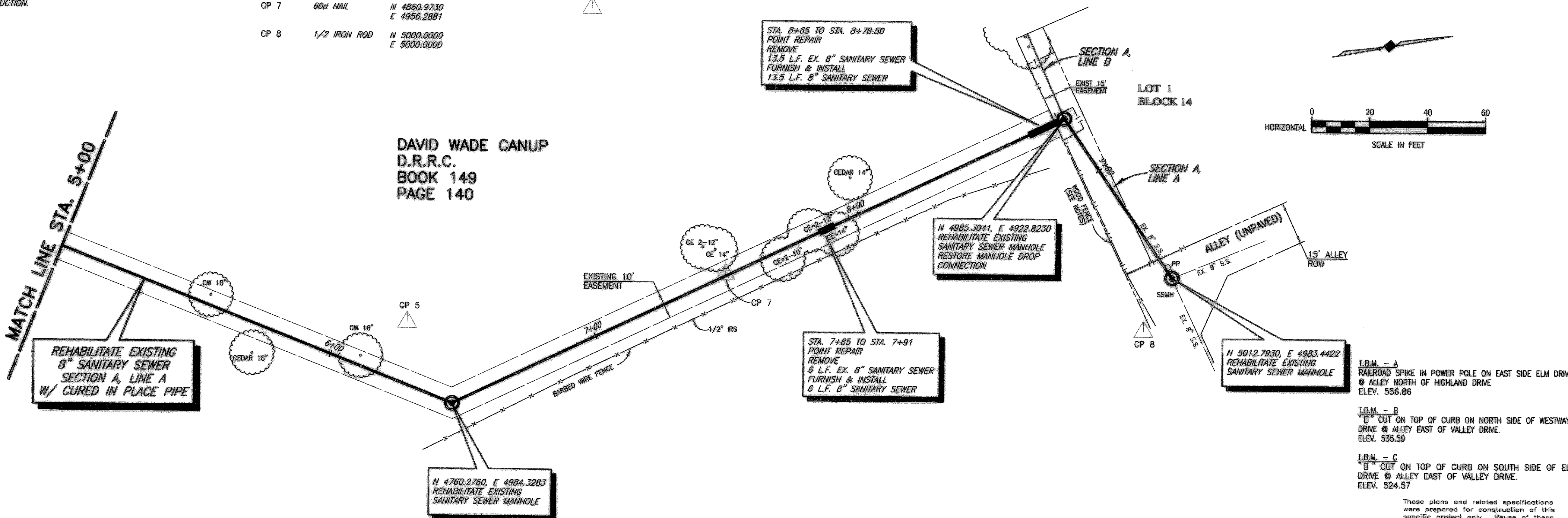
**ALTERNATE BID**

OPEN CUT REPLACEMENT OF SANITARY SEWER & EXISTING MANHOLES IN SAME TRENCH (SDR 35 PVC PIPE)

SURVEY CONTROL POINTS		
CP 5	60d NAIL	N 4749.7047 E 4954.3032
CP 6	60d NAIL	N 4830.7788 E 4857.8777
CP 7	60d NAIL	N 4860.9730 E 4956.2881
CP 8	1/2 IRON ROD	N 5000.0000 E 5000.0000

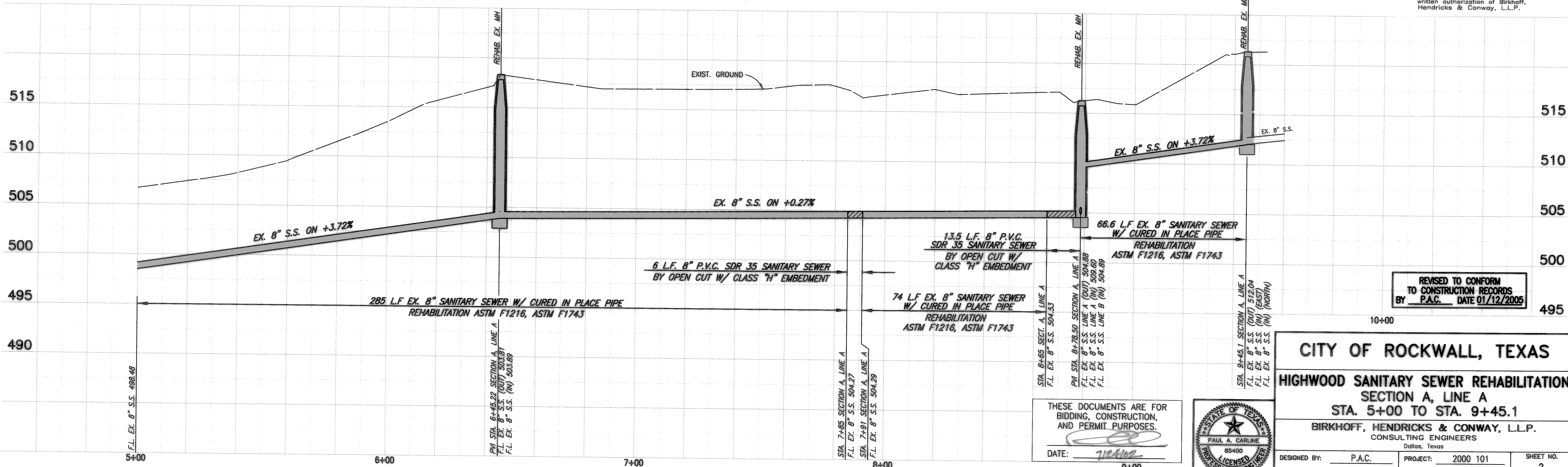
CP 6

**HIGHWOOD ADDITION**



- T.B.M. - A  
RAILROAD SPIKE IN POWER POLE ON EAST SIDE ELM DRIVE @ ALLEY NORTH OF HIGHLAND DRIVE  
ELEV. 556.86
- T.B.M. - B  
CUT ON TOP OF CURB ON NORTH SIDE OF WESTWAY DRIVE @ ALLEY EAST OF VALLEY DRIVE.  
ELEV. 535.59
- T.B.M. - C  
CUT ON TOP OF CURB ON SOUTH SIDE OF ELM DRIVE @ ALLEY EAST OF VALLEY DRIVE.  
ELEV. 524.57

These plans and related specifications were prepared for construction of this specific project only. Reuse of these documents is not permitted without written authorization of Birkhoff, Hendricks & Conway, L.L.P.



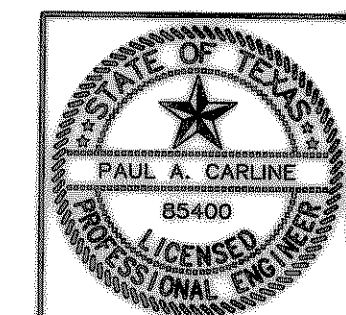
REVISED TO CONFORM TO CONSTRUCTION RECORDS BY P.A.C. DATE 01/12/2005

**CITY OF ROCKWALL, TEXAS**  
**HIGHWOOD SANITARY SEWER REHABILITATION**  
**SECTION A, LINE A**  
**STA. 5+00 TO STA. 9+45.1**

**BIRKHOFF, HENDRICKS & CONWAY, L.L.P.**  
CONSULTING ENGINEERS  
Dallas, Texas

DESIGNED BY: P.A.C.	PROJECT: 2000 101	SHEET NO. 2
DRAWN BY: B.H. & C.	DATE: JULY, 2002	OF 10 SHEETS

THESE DOCUMENTS ARE FOR BIDDING, CONSTRUCTION, AND PERMIT PURPOSES.  
DATE: 7/12/02



07/24/2002 T.J.H. 00101-02.DWG SCALE: 1"=20' BLOCKS: