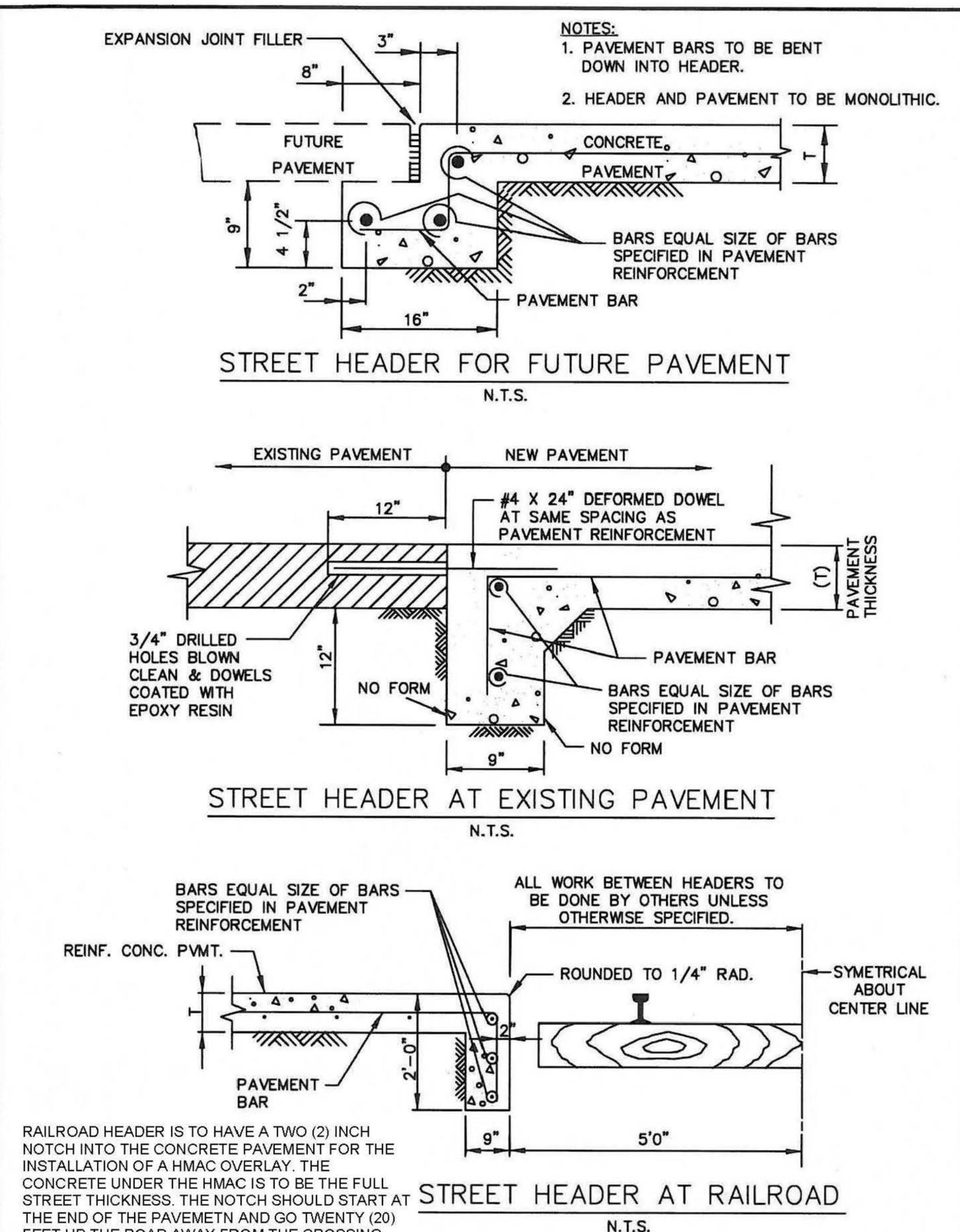
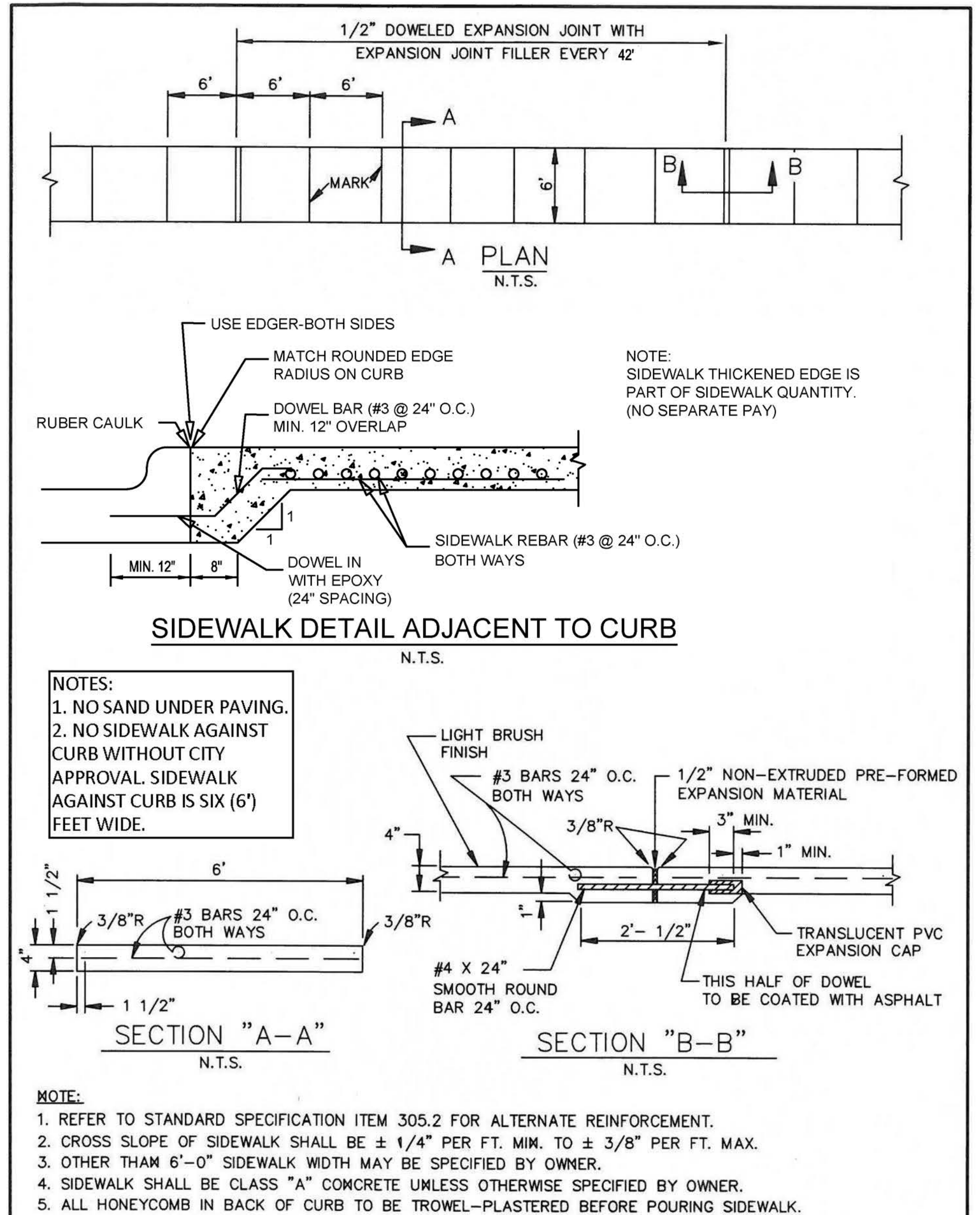


ALLEY APPROACH RADIUS RETURN TYPE	North Central Texas Council of Governments	STANDARD SPECIFICATION REFERENCE 305.2
		DATE: OCT. '04 STANDARD DRAWING NO.: 2160



REINFORCED CONCRETE PAVEMENT	CITY OF ROCKWALL	STANDARD SPECIFICATION REFERENCE 305.4
STREET HEADERS		DATE: Mar. 2018 STANDARD DRAWING NO.: R-2070



REINFORCED CONCRETE SIDEWALKS	CITY OF ROCKWALL	STANDARD SPECIFICATION REFERENCE 305.2
JOINTS AND SPACING		DATE: Mar. 2018 STANDARD DRAWING NO.: R-2170

Drawing: PA PROJECTS (RWA 1821) (C) Sheets (Phase 1) - NORTH SIDE PAVING DETAILS 9 OF 9.dwg at Sep 27, 2019 10:45am by jbellie  
Layout: AS PAVING DETAILS 2 OF 9  
Xrefs: xref-pavement.dwg

no.	revision	by	date

**teague nall and perkins, inc**  
825 Watters Creek Blvd., Suite M300  
Allen, Texas 75013  
214.461.9867 ph 214.461.9864 fx  
www.tnpsc.com  
TBPE: F-230; TBPLS: 10011600, 10011601, 10194381

City of Rockwall  
The New Horizon

scale  
when bar is  
1 inch long

horiz  
N/A

vert  
N/A

SEP 2019

**RECORD DOCUMENTS**

THESE PLANS ARE FOR THE OWNER'S USE AS RECORD SET OF THE CONSTRUCTED PROJECT, AND REFLECT REVISIONS AND CONSTRUCTION RELATED CHANGES AS RECORDED BY THE CONTRACTOR. CHANGES MADE FROM THE ORIGINAL CONSTRUCTION DOCUMENTS DO NOT DEPICT ENGINEERING AND ARE NOT THE RESPONSIBILITY OF TEAGUE NALL & PERKINS, INC. OR THE ENGINEER OF RECORD ON THE ORIGINAL DOCUMENTS. ORIGINAL PLANS RELEASED FOR CONSTRUCTION WERE SEALED BY GYANENDRA POKHREL, P.E. NO. 118159 ON 09/28/2018.

CITY OF ROCKWALL, TEXAS  
**HIGHLAND DRIVE RECONSTRUCTION, PHASE I**  
(DRIFTWOOD STREET TO BEDFORD FALLS LANE)  
**PAVING DETAILS 2 OF 9**

tnp project  
RWL18219  
sheet  
**43**