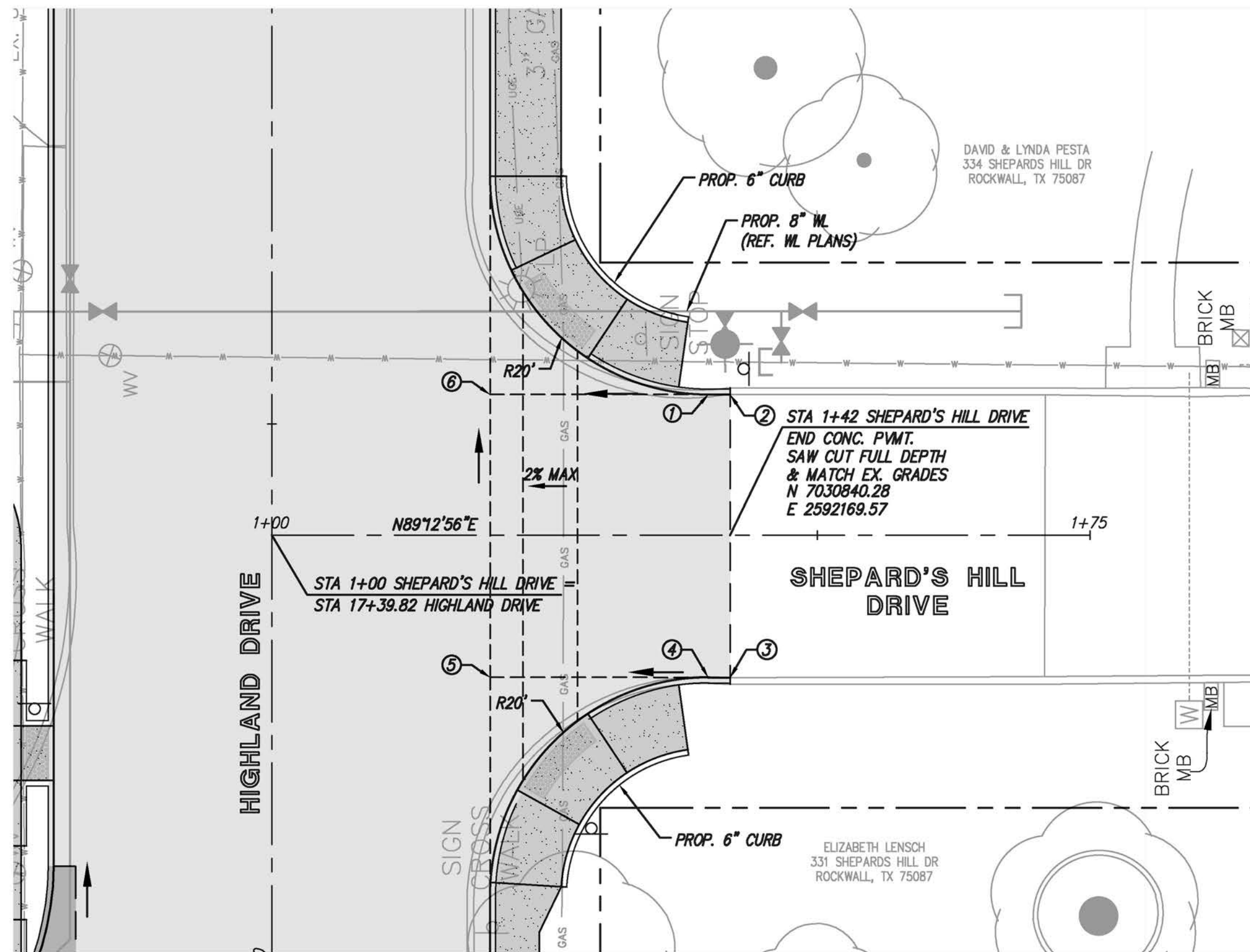


Drawing: P:\PROJECTS\RWL18219\CAD\Sheets\PHASE 1 - NORTH\29 SHEPARD'S HILL PLAN & PROFILE.dwg at Sep 27, 2019 - 10:41am by jbedelle
 Layout: 29 SHEPARD'S HILL PLAN & PROFILE - Arsite: waf-berard.dwg - xdd-base.dwg - xdd-water.dwg - xdd-paving.dwg - xdd-school_site.dwg



UTILITY NOTE

THE UTILITIES SHOWN ON THE PLANS WERE COMPILED FROM VARIOUS SOURCES AND ARE INTENDED TO SHOW THE GENERAL EXISTENCE AND LOCATION OF UTILITIES IN THE AREA OF CONSTRUCTION. THE ENGINEER ASSUMES NO RESPONSIBILITY FOR THE ACCURACY OF THE UTILITY INFORMATION SHOWN ON THE PLANS. THE CONTRACTOR SHALL VERIFY THE EXACT LOCATION OF ALL UTILITIES PRIOR TO CONSTRUCTION. THE CONTRACTOR SHALL CONTACT UTILITY COMPANIES 48 HOURS IN ADVANCE OF ANY CONSTRUCTION ACTIVITIES IN ORDER TO DETERMINE IF THERE IS ANY CONFLICT WITH THE PROPOSED FACILITIES. THE CONTRACTOR SHALL NOTIFY THE ENGINEER IMMEDIATELY WHEN CONFLICTS WITH EXISTING UTILITIES ARE DISCOVERED.

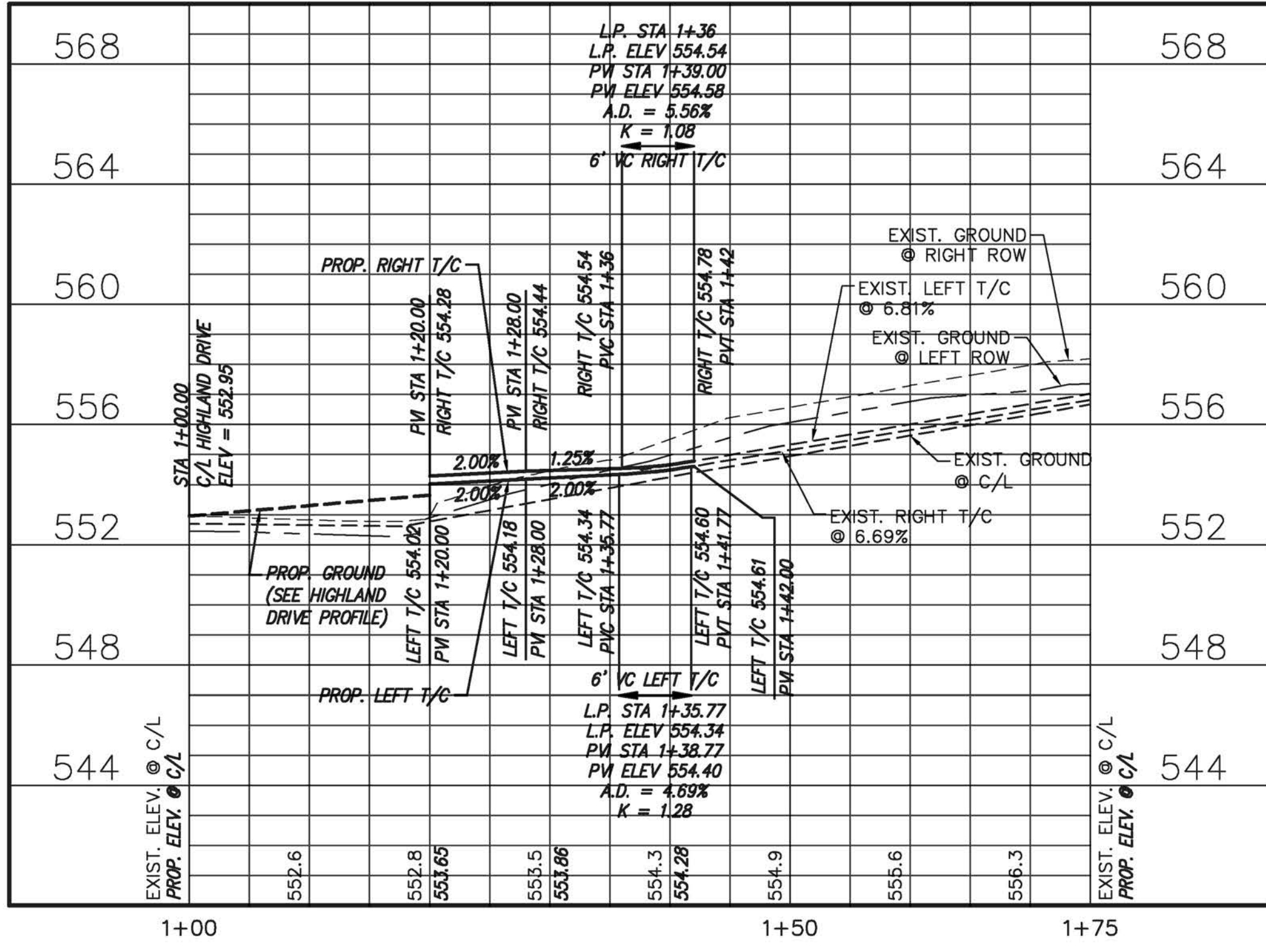
POINT TABLE: SHEPARD'S HILL DRIVE

#	STA	OFFSET	DESC	T/P
1	1+40	12.90 LT	PT	553.99
2	1+42	12.89 LT	PI	554.11
3	1+42	13.05 RT	PI	554.28
4	1+40	13.05 RT	PT	554.16
5	1+20	13.05 RT	PI	553.78
6	1+20	12.90 LT	PI	553.52

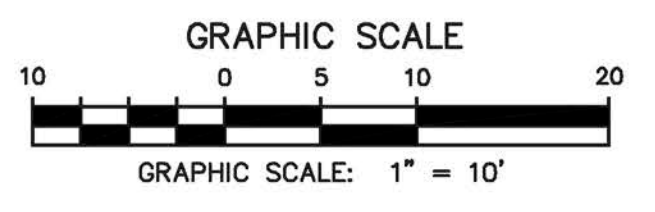


LEGEND

	PROP. 8" CONC. PAVEMENT HIGHLAND DR.
	PROP. 6" CONC. PAVEMENT SHEPARD'S HILL DR.
	PROP. 4" CONCRETE SIDEWALK

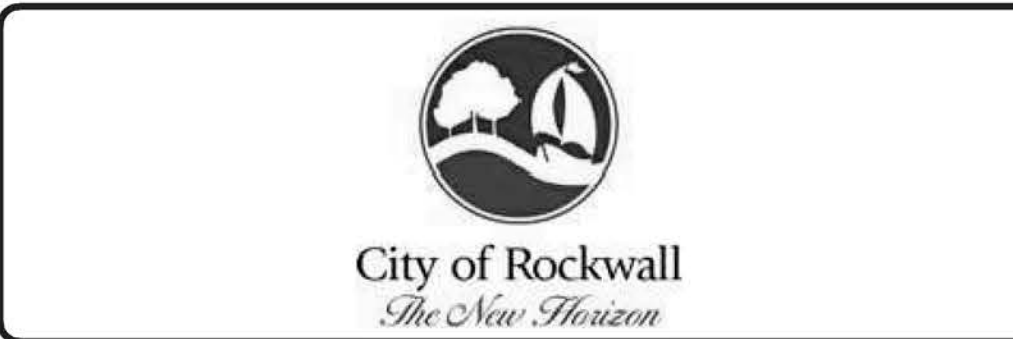


SHEPARD'S HILL DRIVE



no.	revision	by	date

teague nall and perkins, inc
 825 Watters Creek Blvd., Suite M300
 Allen, Texas 75013
 214.461.9867 ph 214.461.9864 fx
 www.tnpsc.com
 TBPE: F-230; TBPLS: 10011600, 10011601, 10194381



scale
 when bar is
 1 inch long
 horiz
1" = 10'
 vert
1" = 4'
 SEP 2019



RECORD DOCUMENTS

THESE PLANS ARE FOR THE OWNER'S USE AS RECORD SET OF THE CONSTRUCTED PROJECT, AND REFLECT REVISIONS AND CONSTRUCTION RELATED CHANGES AS RECORDED BY THE CONTRACTOR. CHANGES MADE FROM THE ORIGINAL CONSTRUCTION DOCUMENTS DO NOT DEPICT ENGINEERING AND ARE NOT THE RESPONSIBILITY OF TEAGUE NALL & PERKINS, INC. OR THE ENGINEER OF RECORD ON THE ORIGINAL DOCUMENTS. ORIGINAL PLANS RELEASED FOR CONSTRUCTION WERE SEALED BY GYANENDRA POKHREL, P.E. NO. 118159 ON 09/28/2018.

CITY OF ROCKWALL, TEXAS
HIGHLAND DRIVE RECONSTRUCTION, PHASE I
 (DRIFTWOOD STREET TO BEDFORD FALLS LANE)
SHEPARD'S HILL PLAN & PROFILE

tnp project
RWL18219
 sheet
37